

# Student Success Newsletter

St. Philip's College, 1801 Martin Luther King Dr., San Antonio, TX 78203

St. Philip's College - Southwest Campus, 800 Quintana Rd., San Antonio, TX 78211

## Student Success Leadership Team



Dr. Mordecai Brownlee  
Vice President for Student Success



Dr. Paul Machen, II  
Dean for Student Success



Christina Cortez  
Dean for Student Success

**Editors:** Rosalinda Rivas, Eitandria Tello

## Quality Enhancement Plan – Ethical Decision-Making

St. Philip's College is accredited by the Southern Association of Colleges and Schools Commission on Colleges (SACSCOC). Part of this process is the QEP (Quality Enhancement Plan) to promote student success. Our QEP topic is Ethical Decision-Making.

QEP Focus: Ethical decision-making is the ability to connect values and choices to actions and consequences.

QEP Goal: Students engage in specific measurable academic activities to enhance their ethical decision-making skills.

### Ethical Decision-Making Process:

- \*Stop and think to determine the facts.
- \*Identify the options.
- \*Consider consequences for yourself and others.
- \*Make an ethical choice and take appropriate action.



## MESSAGE FROM OUR VICE-PRESIDENT:

Greetings St. Philip's College –

Our community, our nation, this world is currently facing a health crisis as we wage war on COVID-19. Even in the midst of these challenging times, the pursuit of education is well underway. Please know that St. Philip's College is here to support you and this publication provides an array of services available to support your academic pathway. Lastly, be sure to watch the recent address by our College President, Dr. Adena Williams Loston regarding COVID-19 and our institutional commitment to support you. Take care, be safe, and keep going!

**Dr. Mordecai Ian Brownlee**  
Vice President for Student Success  
St. Philip's College

## Important Dates

- April 1 Summer 2020 Registration is ongoing
- April 1** **Census Day (2020 Census, US Census Bureau -- Submit your Census online -- Link on page 6)**
- April 3 Census Date (Flex II)
- April 6 Fall 2020 Registration begins (by Time-Ticket)
- April 10-12 Easter Holiday - College Closed
- April 15 Fall 2020 Registration is ongoing (All Students)

## Student Success in the SLC – MLK Campus

For more information, contact Charleen Brammer at 210-486-2468 or 210-486-2275.

### SLC 102 Point of Contact

SPC Safe **SPACE** Advocacy Center  
Counseling Services  
Social Services Assistance  
Disability Services  
Service Learning/Financial Literacy  
Student Conduct/Title IX Programs

Sasha Wilhelm  
Sasha Wilhelm  
Sasha Wilhelm  
Maria Botello  
Elizabeth Castillo  
John Martin

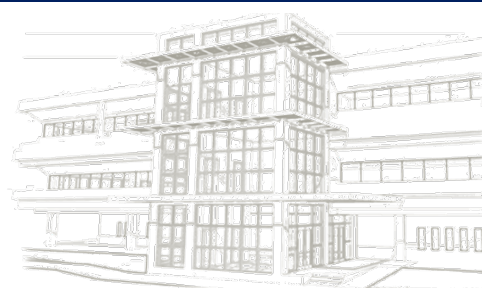
### SLC 127 Point of Contact

SPC Health Center

Elijah Casillas

## Spring 2020 Hours of Operation (Remote Access only)

Monday, Tuesday, Thursday, Friday	8:00 am – 5:00 pm
Wednesday	8:00 am – 7:00 pm
First Saturday of the Month	9:00 am – 1:00 pm



## **From the Desk of Vice President for Academic Success**

### **Mr. Randall Dawson:**

Thank you for patience and persistence during this transitional period of learning via remote instruction. The health and wellness of students at St. Philip's College is our highest priority, along with ensuring academic success. Out of an abundance of caution, St. Philip's College has made some temporary changes to the way we provide instruction and operate in light of the growing concerns related to the coronavirus. St. Philip's College is committed to doing everything possible to ease your transition from on-site classes to remote learning as we seek to follow expert guidelines on limiting the spread of coronavirus.

The St. Philip's College leadership has been following the recommendations of the Centers for Disease Control and Prevention (CDC) and San Antonio Metro Health to ensure we are minimizing the risk of exposure on our campuses.

Thank you for your cooperation, patience, and resilience as we adapt to the changes in our community and around the globe.

Find more information by going to the [Remote Learning FAQ](#), or at <https://www.alamo.edu/siteassets/district/news/special-news/covid19/student-faq-remote-learning.pdf>.

## **From the Desk of Vice President for College Services**

### **Mr. Lacy Hampton:**

To our beloved students of St. Philip's College, we thank you for your patience and cooperation as we make the necessary adjustments to transition from on-site classes to remote learning due to COVID-19. As always, we will continue to be here for you and to ensure the support services are in place as you continue to pursue your academic and career dreams!!

Take care and be safe.

## **Helpful Numbers for Student Success:**

Educational Support Services Administrative Office	210-486-2468	Charlie Brammer
Disability Services	210-486-2199	Maria Botello
Financial Literacy Services	210-486-2140	Enida Rehome
First Year Programs	210-486-2473	Liz Castillo
Tutoring and Technology Center	210-486-2517	Jared Boggs
Student Advocacy Center	210-486-2827	Alexandra "Sasha" Wilhelm
Counseling Services	210-486-2333	Alexandra "Sasha" Wilhelm
Counseling Services	210-486-2378	Eitandria Tello
Counseling Services (General Services)	210-486-2117	Rosalinda Rivas
Student Conduct/Title IX	210-486-2741	John Martin
Student Life (Director)	210-486-2090	Dr. Angela Williams (Dr. Mac)
Student Life (Associate Director)	210-486-2241	Destiny Harper-Lane
Student Life (Administrative Office)	210-486-2135	Rose Kyle-Bankston



## AlamoCARES

For more information, contact Dr. Mordecai Brownlee, Vice President of Student Success at 210-486-2252.

St. Philip's College is committed to providing a supportive learning environment and to fostering safe, healthy relationships among our students. In this effort, Alamo Colleges District initiated AlamoCARES, a prevention, education and support program regarding dating violence, domestic violence, sexual assault and stalking. It is our sincere hope that AlamoCARES will empower you to make well-informed decisions about life issues that affect your college years and beyond.

Within the AlamoCARES site, you will find information on rights granted by **Title IX** and resources to help educate and assist you when dealing with harassment and sexual violence. Coming soon are events, training and opportunities to bring awareness when dealing with difficult issues and creating discussion opportunities with students. Visit us at <http://alamo.edu/spc/alamocares/> for more information.

The Alamo Colleges District encourage individuals to bring forward information/complaints about sexual harassment and sexual violence. **Retaliation** against any **individual who reports or participates** in the investigation of alleged violations is **strictly forbidden** and will be **enforced** by the College administration.

If you believe you have experienced **Sexual Misconduct** you may consider the following options:

- Contact **Campus Police** at 210-485-0099 (non-emergency) or 210-485-0911 (emergency)
- Seek **medical attention** at a hospital or with a physician
- **Report the incident** at [www.alamo.edu/TitleIXCoordinator/](http://www.alamo.edu/TitleIXCoordinator/) (call John Martin 210-486-2746)
- **Contact SPC Counseling Services** at 210-486-2333 (for confidential counseling and or referrals)
- Contact **parents, relatives or close friends** for support

**H.1.1 Equal Education and Employment Opportunities (Policy)** [www.alamo.edu/district/policies/](http://www.alamo.edu/district/policies/)  
AlamoCARES has additional **Title IX** information and resources at: [www.alamo.edu/spc/AlamoCARES](http://www.alamo.edu/spc/AlamoCARES)

### **ATTENTION STUDENTS!**

All entering freshmen, former and transfer students are now required to complete "**Sexual Assault Prevention for Community Colleges**". Sexual Assault Prevention for Community Colleges is an online survey and course addressing critical life skills. The training is our way of informing St. Philip's College students about **Title IX** standards, reporting violations and resources available. **All entering freshmen, former and transfer students are required to complete the training before the end of their first semester of classes at St. Philip's College (to avoid a registration hold being placed on their account).**

To access the Sexual Assault Prevention for Community Colleges training:

1. Always sign in through ACES at <https://alamoaces.alamo.edu>.
2. Look for the AlamoCARES box on the Student tab and read the important message before accessing the course. Note: an alternative training is available; see your Vice President for Student Success for assistance.
3. Click on the link provided, and complete the confidential pre-survey at the start of the course. The Alamo Colleges District does not receive a copy of your responses.
4. The quiz at the end of the course is required to document your completion, but the score is not recorded and will not impact you in any way. Completion is documented on your student record.

**You Have the Right to Feel Safe.**

# Academic and Career Advising Services (MLK and SW Campus)

For more information contact Arianna Lay at 210-486-2381.

The campus remains closed due to coronavirus, but teaching, learning, and staff support are provided remotely. Visit the [COVID-19 Update Page](#) or key in <https://coronavirus/www.alamo.edu/> to see the latest developments. Updates are posted as soon as they become available.

**Schedule your advising appointment today!** Virtual walk-in Advising services are offered Wednesdays from 5:00 pm – 7:00 pm via Zoom. Access our virtual walk-ins on this link: <https://alamo.zoom.us/j/129797519>. Download the application on your smartphone or computer for instant access (no account required), simply type in the Meeting ID: 129797519.

**No device or computer, no problem!** Call 1-346-248-7799 or 1-312-626-6799 and join with the Meeting ID: 129797519

**Free Wi-fi in our Parking Lots!** Each of our five colleges will have a designated area in their parking lots where free wi-fi will be provided for students. Directional signage will guide students to the locations. For more information and resources click on the [Remote Learning FAQ](#) or visit <https://www.alamo.edu/siteassets/district/news/special-news/covid19/student-faq-remote-learning.pdf> and <https://www.alamo.edu/academics/academic-resources/academic-calendar/summer-2020-registrationpayment-calendar/>.

## Zoom Advising Instructions in Navigate:

- Log in to your [ACES](#) Account
- Click on the "Start Here" tab
- Select the "Alamo NAVIGATE" icon
- Click "Login"
- Select the "Appointments" tab
- Select "Schedule an Appointment"
- Select the Reason for your appointment and hit Next
- Select the Location and hit Next
- Select the Day and Time that works for you and hit Next
- Enter "Zoom Appointment" in the Notes box
- Review the selection and confirm your appointment

For more information visit <https://www.alamo.edu/spc/academics/academic-resources/academic-advising/>.

## Hours of Operation:

Monday, Tuesday, Thursday	8:00 am – 5:00 pm
Wednesday	8:00 am – 7:00 pm
Friday	1:00 pm – 5:00 pm
1 <sup>st</sup> Saturday of the month	9:00 am – 1:00 pm

**Refer to Fall 2020 Registration Time-Ticket schedule located on Page 11.**


### Technical Support

**Email:** [spc-helpdesk@alamo.edu](mailto:spc-helpdesk@alamo.edu)

**Phone:** 210-486-2777 (Choose **option 1** for technical support)

### Steps to identify who your Advisor is:

1. Log into ACES
2. Click on the **My Page** tab (4th tab from the left)
3. Under **Academic Profile** (on the left) select the **current term** and press **Go**
4. Your advisor's name will appear under "Advisors"
5. Visit your advisor

 <b>ALAMO COLLEGES</b> <b>AlamoINSTITUTES</b> An organization of six career pathways designed for students who have key interests, such as, but not limited to the following areas:	
<b>Creative &amp; Communication Arts Institute</b>	<i>The Arts, Audio/Video Technology and Communications*</i>
<b>Business &amp; Entrepreneurship Institute</b>	<i>Business Management &amp; Administration, Finance, Hospitality &amp; Tourism, and Marketing*</i>
<b>Health &amp; Biosciences Institute</b>	<i>Health Sciences*</i>
<b>Advanced Manufacturing &amp; Logistics Institute</b>	<i>Architecture, Construction, Manufacturing, Transportation, Distribution &amp; Logistics*</i>
<b>Public Service Institute</b>	<i>Education, Training, Government, Public Administration, Human Services, Law, Public Safety, Correction and Security*</i>
<b>Science &amp; Technology Institute</b>	<i>Agriculture, Food &amp; National Resources, Information Technology, Science, Technology, Engineering and Mathematics*</i>

# Academic and Career Advising Services (continued)

For more information contact Arianna Lay at 210-486-2381.

## New Student Orientation (NSO):

New Student Orientation is reserved for students currently enrolling for the Summer 2020 Semester. Fall students will need to select a date after April 13, 2020. To view Checklist, online Registration Form, NSO handout, reschedule NSO, and Military Joint Base San Antonio (JBSA) sessions, visit <https://www.alamo.edu/spc/academics/academic-resources/academic-advising/new-student-orientation/>.

Questions, concerns or comments may be directed to the JBSA Advising staff:

### Fort Sam Students

Allison Joubert  
210-486-2004

### Randolph Students

Cynthia Jaime  
210-486-2901

## Graduation Information

For more information contact Enrollment Management at 210-486-2700.

All five colleges in the Alamo Colleges District will be postponing their spring commencement ceremonies until December 2020.

Meet with your Advisor to review the degree audit. The graduation application deadline is extended to April 17 and the graduation application is re-opened.

For more information on our Advising Institutes, visit <https://www.alamo.edu/spc/academics/academic-resources/academic-advising/>.

### Lackland Students

Javier Barron  
210-486-2901

### General Information

Sarai Duran  
210-486-2001

[dst-military@alamo.edu](mailto:dst-military@alamo.edu)

**Career Services:** We have the resources and network to help you explore and develop your career goals. Through self-assessment and career exploration, you will be able to ensure that the Alamo Institute you selected upon enrollment is a great fit for your career and educational needs. Learn more about our career related services at <https://www.alamo.edu/spc/experience-spc/current-students/career-services/> or contact Advising Lead Gilbert Palomo via email ([spc-jobs@alamo.edu](mailto:spc-jobs@alamo.edu)) or at 210-486-2056.

## SPC Academic and Career Advisors:

### Institute 1: Creative & Communication Arts

Konnie Harper-Thompson  
[kharpert-thompson@alamo.edu](mailto:kharpert-thompson@alamo.edu)

### Institute 2: Business & Entrepreneurship

Yolanda Ward [yward@alamo.edu](mailto:yward@alamo.edu)  
James Satchell [jsatchell@alamo.edu](mailto:jsatchell@alamo.edu)  
Joseph Hernandez [jhernandez31@alamo.edu](mailto:jhernandez31@alamo.edu)

### Institute 3: Health & Biosciences

Frances Calderon [fcalderson4@alamo.edu](mailto:fcalderson4@alamo.edu)  
Irma Lopez [isanchez17@alamo.edu](mailto:isanchez17@alamo.edu)  
Teresa Hopwood [thopwood2@alamo.edu](mailto:thopwood2@alamo.edu)  
Tricia McElligott [tmcelligott@alamo.edu](mailto:tmcelligott@alamo.edu)  
Nathaniel Martinez [nmartinez324@alamo.edu](mailto:nmartinez324@alamo.edu)  
Doug Gable [dgable@alamo.edu](mailto:dgable@alamo.edu)  
Jessica Perez [jperez1494@alamo.edu](mailto:jperez1494@alamo.edu)  
Juan Venegas [jvenegas21@alamo.edu](mailto:jvenegas21@alamo.edu)  
Xaviera Toussaint [xtoussaint@alamo.edu](mailto:xtoussaint@alamo.edu)

### Institute 4: Advanced Manufacturing & Logistics Automotive Technology (MLK Campus)

Yvonne Benton [ybenton@alamo.edu](mailto:ybenton@alamo.edu)  
Christine Saucedo [csauceda1@alamo.edu](mailto:csauceda1@alamo.edu)

### Institute 4: Advanced Manufacturing & Logistics (Southwest Campus)

Blair Hannon [bhannon@alamo.edu](mailto:bhannon@alamo.edu)  
Sarah Ramirez [sramirez260@alamo.edu](mailto:sramirez260@alamo.edu)  
Jennifer Salmeron [jleal@alamo.edu](mailto:jleal@alamo.edu)  
Carlos Solis [csolis@alamo.edu](mailto:csolis@alamo.edu)

### Institute 5: Public Service

Yvonne Benton [ybenton@alamo.edu](mailto:ybenton@alamo.edu)  
Konnie Harper-Thompson [kharpert-thompson@alamo.edu](mailto:kharpert-thompson@alamo.edu)  
Christine Saucedo [csauceda1@alamo.edu](mailto:csauceda1@alamo.edu)

### Institute 6: Science & Technology

Meredith Bess [mbess@alamo.edu](mailto:mbess@alamo.edu)  
Gloria Jose [gjose@alamo.edu](mailto:gjose@alamo.edu)  
Xaviera Toussaint [xtoussaint@alamo.edu](mailto:xtoussaint@alamo.edu)



## 2020 Census – U.S. Census Bureau

**April 1, 2020 is Census Day! Fill out your census online, by phone or mailing in the form.** Participating is your chance to help your county get its fair share of representation and funding. For more information and to fill out your census in Spanish call: 1-844-468-2020 (see <https://2020census.gov/> for other languages). Click the banner below or go to <https://www.sabexarcounmein.org/> to get counted now!



### Alumni Affairs (MLK and SW Campus)

*For more information contact Dr. Sharon Crockett-Ray at 210-486-2887.*

The college remains closed due to coronavirus, but teaching, learning, and staff support are provided remotely. Please visit the [COVID-19 Update Page](#) or key in <https://coronavirus/www.alamo.edu/> to see the latest developments. Updates are posted as soon as they become available, but let us know how we can help.

If you are looking for a way to stay in touch with SPC, there is no better way than joining the Alumni and Friends Association. Membership information is at <https://www.alamo.edu/spc/alumni-affairs/>.

### Bae-B-Safe (MLK and SW Campus)

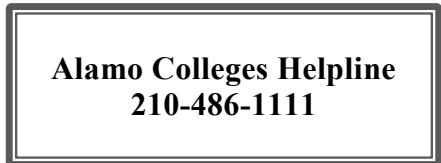
*For more information contact Tracy Watts at 210-486-2538.*

BAE-B-SAFE works to support educational success and increase graduation rates by preventing unplanned pregnancies and preparing young people with life skills to protect their future. Empower and educate yourself about healthy sexual behaviors. (Must be 14-19 years of age to participate.) Call 210-486-2538, or email me at [twatts8@alamo.edu](mailto:twatts8@alamo.edu).

### Business Office (MLK and SW Campus)

*For more information contact Sofia Zavala at 210-486-2247.*

The Business Office staff can answer questions about installment plans, billing, or tuition discounts and waivers. For more information call Sofia Zavala (210-486-2247), email [dst-ybo2@alamo.edu](mailto:dst-ybo2@alamo.edu), or visit <https://www.alamo.edu/district/business-office/>. Please provide your name, telephone number, email address, and Banner ID when calling or emailing.



## Bookstore (MLK and SW Campus)

For more information contact Jorge Marines at 210-534-8024.



**BOOKSTORE**

**St. Philip's  
College**

The college remains closed due to coronavirus, but teaching, learning, and staff support are provided remotely. Visit the [COVID-19 Update Page](#) or key in <https://coronavirus/www.alamo.edu/> to see the latest developments. Updates are posted as soon as they become available.

You can also reach us at 210-486-2440 or via email at [stphilips@bkstr.com](mailto:stphilips@bkstr.com). Inquire about our textbook low price guarantee, discounts on technology, and much more. To view bookstore information, or search for textbook options, visit <https://www.bkstr.com/stphillipsstore>.

## Child Development Center (MLK and SW Campus)

For more information contact Monica Guzman at 210-486-2501.

The campus remains closed due to coronavirus, but teaching, learning, and staff support are provided remotely. Please visit the [COVID-19 Update Page](#) or key in <https://coronavirus/www.alamo.edu/> to see the latest developments. Updates are posted as soon as they become available. For more information call us at 210-486-2500 or visit <https://www.alamo.edu/spc/child-dev-center/>.



## Counseling Services (MLK and SW Campus)

For more information contact Sasha Wilhelm at 210-486-2827.

The campus remains closed due to COVID-19, but teaching, learning, and counseling support are provided remotely via Zoom. Call 210-486-2333 to schedule an appointment (provide your name, telephone number, email address, and Banner ID when calling or emailing). In case of an emergency call 9-1-1.

College students talk to Counselors about many different types of issues like career concerns, anxiety, academic stress, relationships, stress associated with deportation/family legal status, trauma, coping with illness, and more. Counselors also provide referrals and community resources. Make an appointment if you want to talk about strategies that can help you manage your stress, school and life activities. See important links on our website:

<https://www.alamo.edu/spc/experience-spc/current-students/support-centers/counseling-services/>.

**DACA Allies:** Find resources for scholarships and legal assistance for Deferred Action for Childhood Arrivals (DACA) at <https://www.alamo.edu/spc/admissions/specific-populations/daca/>, or speak confidentially to District Coordinator Carmen de Luna-Jones (210-485-2080), SPC Director Elizabeth Castillo (210-486-2473), or SPC Counselor Rosalinda Rivas (210-486-2117).

Substance Abuse and Mental  
Health Services Administration  
(SAMHSA)

1-800-662-HELP (4357)

TTY: 1-800-487-4889

Treatment referral and info 24/7

[www.samhsa.gov/find-help/national-helpline](http://www.samhsa.gov/find-help/national-helpline)

Do you think you are the only one who is worried about your housing situation? About 50% of students who live off-campus experience poverty and many of them lack adequate housing. **You are not alone.**

Contact [Counseling Services](#), so we can share local resources with you.

## The SPC Safe **SPACE** Student Success & Advocacy Center (MLK and SW Campus)

For more information contact Sasha Wilhelm at 210-486-2827.

The campus remains closed due to COVID-19, but teaching, learning, and staff support are provided remotely. Please visit the [COVID-19 Update Page](#) or key in <https://coronavirus/www.alamo.edu/> to see the latest developments. Updates are posted as soon as they become available.



**Helping Students Succeed at SPC:** The SPC Safe **SPACE** Student Success & Advocacy Center provides resources for food and social services assistance, and possible access to a one-time emergency aid program through Trellis.

**Important New Service – Alamo Colleges Helpline (210-486-1111):** You may contact the Alamo Colleges Helpline at 210-486-1111 (8 am-7 pm, Monday-Thursday, and Friday 8 am-5 pm). The San Antonio Food Bank website is <https://safoodbank.org/cvresponse/>. Let us know how we can help. For more information contact Sasha Wilhelm via email at [awilhelm3@alamo.edu](mailto:awilhelm3@alamo.edu) (or at 210-486-2827). Please provide your name, telephone number, email address, and Banner ID when calling or emailing.

## Disability Services (MLK and SW Campus)

For more information contact Maria Botello at 210-486-2199.

Disability Services ensures reasonable academic support to qualifying students with disabilities. We want to make sure you get the support you need to complete your courses successfully. To get support with disability services (Establishing or Renewing Services, TSI Testing, Academic Advising, Course Accommodations, or Assistance with online adaptive resources) please contact us at [spc-dss@alamo.edu](mailto:spc-dss@alamo.edu) or call (210) 486-2199. Please provide your name, telephone number, email address, and Banner ID when calling or emailing.



For more information and access to the online registration system, visit <https://www.alamo.edu/spc/experience-spc/current-students/support-centers/disability-services/>.

## St. Philip's College's



Did you have a great experience with a service offered at the college or do you want something addressed? You can now do that with our "Feed the Tiger" form. We want to hear from you and address your concerns. Click on the orange button at <http://spcweb.alamo.edu/feedback/index.html>.

### ***How to get Alamo Alerts (RAVE)***

**Make Sure that YOU get Alamo Colleges Alamo Alerts:** Alamo Colleges email addresses are automatically subscribed to the Alamo Alert System. Log on to [www.getrave.com/login/alamo](http://www.getrave.com/login/alamo) to update your profile. We highly encourage you to add your mobile phone.

**Note:** If you have already entered your mobile number in our previous Alamo Alert System, all you have to do is log in and confirm your mobile number. If you have never entered your mobile number, you will not receive text alerts on your cell phone.

**The weather line** is 210-485-0189; **Campus Police 24-hr. Dispatch** is 210-485-0099; **Campus Police Emergency** is 210-485-0911. Learn more at <https://www.alamo.edu/about-us/our-district/contact-us/emergency/alamo-alert/>, or contact Will Davis via email ([wdavis1@alamo.edu](mailto:wdavis1@alamo.edu)), or by phone at 210-485-0063.



## Good Samaritan Veteran's Outreach & Transition Center (Off-Site)

For more information contact William Moseley at 210-486-2506.

The college remains closed due to coronavirus, but teaching, learning, and staff support are provided remotely. Please visit the [COVID-19 Update Page](#) or key in <https://coronavirus/www.alamo.edu/> to see the latest developments. Updates are posted as soon as they become available.

We provide free services to active duty service members, veterans, their families and the community. This includes remote referral services, job training, financial counseling, health and wellness, business start-up, academic advisement, and no cost legal services by a licensed attorney. Call us Monday-Friday (8 am - 5 pm). To learn more visit <https://www.alamo.edu/spc/about-spc/college-offices/gsvotc/>.



### The Selective Service System reminds all men to register upon their 18<sup>th</sup> birthdays.

This is the law. Register while you are applying for federal student aid (check "Register Me" on FAFSA). You may be denied benefits or a job if you have not registered. Late registrations are accepted until a man's 26th birthday. A person's citizenship status is not shared. Registration forms are available at <https://www.sss.gov>, and any U.S. Post Office.

### Don't forget to complete your 2020 Census Online (use the link found on page 6).

Census Day (April 1) is observed nationwide. When you respond to the census, you'll tell the U.S. Census Bureau where you live as of April 1, 2020. Census takers will begin visiting homes that haven't responded to the 2020 Census to help make sure everyone is counted (May-July).



## International Student Services (MLK and SW Campus)

For more information contact Meredith Bess at 210-486-2147.

The campus remains closed due to coronavirus, but teaching, learning, and staff support are provided remotely. Visit the [COVID-19 Update Page](#) or key in <https://coronavirus/www.alamo.edu/> to see the latest updates. Find resources for F-1 and M-1 visa holders at <https://www.alamo.edu/spc/admissions/specific-populations/international-student-services/>. Services include:

- Immigration matters, such as obtaining F-1 student visas, maintaining full-time enrollment, transferring administration of your SEVIS I-20 record between schools, and traveling outside of the United States
- Academic advising available to assist ELL and international students with course and program planning
- Employment restrictions and options and obtaining work authorization
- Adjustment to St. Philip's College and to life in San Antonio and the United States
- Provide letters for verification of your F-1 status for various purposes, such as obtaining a Texas driver's license or identification card

## Library Resources and Services (MLK and SW Campus)

For more information contact April Schramm (210-486-2357), or Andrew Rivera (210-486-2564).

[Ask Us](#)

All checked out materials from the spring semester will be due on Saturday, May 16, 2020. You may disregard recent email about late materials. All fines will be waived through May 16. Announcements will be sent via Facebook, Library website, and LibGuides. Check these sites throughout this time. During this remote period, printed materials will be unavailable for circulation, however, you can access all electronic resources through the library website. For assistance with the databases, type your question in the **ASK US** section found at the top of the library homepage <https://www.alamo.edu/spc/library>. The Library's Virtual Reference Desk will be staffed from 7 a.m.-7 p.m. Monday-Thursday, 8 a.m.-5 p.m. on Friday, and closed on Saturday and Sunday. During open hours, you can contact us via chat or phone. We will respond by the next business day. Remember, the Library is here to support you. Reach out if you have any questions.

# Military Support Services (Offices at Military Installations)

For more information contact Betsy Hamilton at 210-486-2610.

In response to the Coronavirus COVID-19, all face to face student services at Lackland, Randolph and Fort Sam Houston has been suspended. All Joint Base San Antonio classes have been temporarily converted to distance learning until further notice.

Registration for JBSA courses will continue via online and registration request through email, in accordance with DoD registration priority order. See course notes in the online schedule through ACES for more information.



## Reserved Courses for our Military & Veteran-connected Families!

### Online and Campus

Joint Base San Antonio Courses (temporarily remote, until further notice)

**You may reach the Military Support Services team** by phone, Monday-Friday from 0800-1700 at the following numbers:

**For fastest service** during this time, email [dst-military@alamo.edu](mailto:dst-military@alamo.edu)

Fort Sam Students	Ms. Allison Joubert	(210) 486-2004	Alamo.edu/fortsam
Lackland Students	Mr. Javier Barron	(210) 486-7224	Alamo.edu/Lackland
Randolph Students	Ms. Cynthia Jaime	(210) 486-2901	Alamo.edu/Randolph
General Information	Ms. Sarai Duran	(210) 486-2001	Alamo.edu/military

### Available Remote Services includes, but is not limited to:

- Academic and career exploration and information
- Admission and enrollment services
- Placement and TSI questions
- Residency classification issues
- ACES (Student Portal) navigation assistance
- Basic financial aid assistance
- Tuition Assistance (TA) and MyCAA\* funding help and information
- Preliminary advisement, Military and MyCAA\* education and training plans
- Graduation applications
- Referrals

The U.S. Census is hiring. If you have a work permit you can work for the Census. Apply online:  
<https://2020census.gov/en/jobs.html>

## Phi Theta Kappa Honor Society (MLK and SW Campus)

For more information contact Maria Botello at 210-486-2199.

Students who have a cumulative (overall) GPA of 3.5 or higher and have completed at least 12 college hours are qualified! Graduate with honors by accepting membership! For more information about this award winning honor society, contact a Chapter advisor at <https://www.alamo.edu/spc/experience-spc/campus-life/get-involved/honor-society/> and visit the organization's website <http://www.ptk.org/Join.aspx>. Please provide your name, telephone number, email address, and Banner ID when calling or emailing.



**CENSUS 101: WHAT YOU NEED TO KNOW**

The 2020 Census is closer than you think!  
Here's a quick refresher of what it is and why it's essential that everyone is counted.

**Everyone counts.**  
The census counts every person living in the U.S. once, only once, and in the right place.

**It's about fair representation.**  
Every 10 years, the results of the census are used to reapportion the House of Representatives, determining how many seats each state gets.

**It's in the constitution.**  
The U.S. Constitution mandates that everyone in the country be counted every 10 years. The first census was in 1790.

**It's about \$675 billion.**  
The distribution of more than \$675 billion in federal funds, grants and support to states, counties and communities are based on census data. That money is spent on schools, hospitals, roads, public works and other vital programs.

**It's about redistricting.**  
After each decade's census, state officials redraw the boundaries of the congressional and state legislative districts in their states to account for population shifts.

**Taking part is your civic duty.**  
Completing the census is mandatory: it's a way to participate in our democracy and say "I COUNT!"

## Your response matters:

### CENSUS 2020:

It is estimated that an undercount of Texas' population by even 1% in 2020 could result in a \$300 million loss of federal funding. To learn how Census data impacts you and your community [click here](#), or visit <https://2020census.gov/>.

## Did you know . . .

**By law, the Census Bureau cannot release any identifiable information about you, your home, or your business, even to law enforcement agencies. That's protected under Title 13 of the U.S. Code.**

When you respond to the census, your answers are kept anonymous. They are used only to produce statistics. To learn more about how we protect your privacy [click here](#), or visit <https://2020census.gov/>.

### Graduation Information

For more information contact Enrollment Management at 210-486-2700.

All five colleges in the Alamo Colleges District will be postponing their spring commencement ceremonies until December 2020.

Connect with your Certified Academic Advisor now to review the degree audit. The graduation application deadline is extended to April 17 and the graduation application is re-opened.

For more information on the Advising Institutes, visit <https://www.alamo.edu/spc/academics/academic-resources/academic-advising/>.

## Records and Registration (MLK and SW Campus)

For more information contact Tracy Shelton at 210-486-2292.

The college remains closed due to coronavirus, but teaching, learning, and staff support are provided remotely. The staff is dedicated to your success as a student. Contact staff in Records & Registration or Admissions, to get answers about FERPA, cumulative hours, grades, GPA and more. Let us know how we can help by calling us at 210-486-2700.

**The last day for Incomplete "I" Grades to be completed are as follows:**

<u>Due Date</u>	<u>For all parts of the term</u>
April 13, 2020	Fall 2019



**Online registration for Summer 2020** began by Time-Ticket, and is now underway for all students. Stay on track -- connect with your Certified Academic Advisor now. For more information visit <https://www.alamo.edu/academics/academic-resources/academic-calendar/summer-2020-registrationpayment-calendar/>.

<b>Registration Time Ticketing – Fall 2020</b>	<b>16 Week</b>	<b>Flex I</b>	<b>Start Two</b>	<b>Flex II</b>
46+ Hours Veterans, Active Military	April 6-7	April 6-7	N/A	April 6-7
31+ Hours	April 8-12	April 8-12	N/A	April 8-12
9+ Hours	April 13-14	April 13-14	N/A	April 13-14
All Students	April 15	April 15	N/A	April 15
Start Two Registration	N/A	N/A	August 17	N/A

## Strategies of Behavioral Intervention (MLK and SW Campus)

For more information contact Maria Botello at 210-486-2199.

The Strategies of Behavioral Intervention (SOBI) mission is to promote student, faculty and staff success and campus safety. The SOBI protocol guides our college community to recognize, prevent and respond to incidents. Learn more at <https://www.alamo.edu/spc/about-spc/compliance/strategies-of-behavioral-intervention-sobi/>.

## Student Conduct/Title IX (MLK and SW Campus)

For more information contact John Martin at 210-486-2746.

The college remains closed due to coronavirus, but teaching, learning, and staff support are provided remotely. Please visit the [COVID-19 Update Page](https://coronavirus/www.alamo.edu/) or key in <https://coronavirus/www.alamo.edu/> to see the latest developments. Updates are posted as soon as they become available.

**Note: Students with a T9 Registration Hold** - Sexual Assault Prevention for Community Colleges (SAPCC) training is required for all new, returning and transfer students who enrolled at St. Philip's College Spring 2020. Students who have not completed the training will have a Registration Hold (T9) placed on their record. To ensure you do not have a Registration Hold on your record, do the following:

1. Login to ACES
2. Go to the Student Tab
3. Click Web Services
4. Click the Student Tab
5. Click Student Records
6. Click View Holds

If you have a hold, email John Martin at [jmartin139@alamo.edu](mailto:jmartin139@alamo.edu) Include your full name, banner ID# and contact information for prompt response.



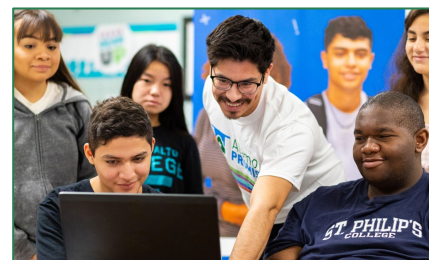
<https://www.alamo.edu/spc/about-spc/leadership/president/presidents-newsletters/>

## AlamoPROMISE Program - Complete your steps! (MLK and SW Campus)

Contact Us: Admissions, Business Office, Student Financial Aid at 210-21ALAMO (210-212-5266), or call Toll Free at 1-844-20ALAMO (1-844-202-5266).

March 20 was the priority date to complete the remaining steps needed to be considered an AlamoPROMISE Scholar in Fall 2020. In sensitivity to the COVID-119 situation, remaining items submitted after the priority date will be considered on a space available basis.

The Alamo Colleges District and its partners are committed to ending poverty, enhancing economic and social mobility and meeting workforce demands in our City by joining forces to help more students complete college and obtain the necessary skills to hold high-wage, high-demand jobs. For more information visit <https://www.alamo.edu/promise/about/>.



Abuse can look different for immigrants. Call our confidential 24-hour bilingual crisis/domestic violence helpline: 651.772.1611

<https://casadeesperanza.org/>



# AlamoPROMISE Program - Complete your steps! (continued)

Contact Us: Admissions, Business Office, Student Financial Aid at 210-21ALAMO (210-212-5266), or call Toll Free at 1-844-20ALAMO (1-844-202-5266).

It is our goal to allow as many eligible students as possible to take advantage of the exceptional opportunity offered by **AlamoPROMISE**, and we understand that completing these two steps takes time. Continue with items 2 and 3.

1. (The period for new "Save Your Seat" application is closed.)
2. File for Financial Aid (Free application for FAFSA or TASFA) by March 20
3. Apply to an ACD College ([www.applytexas.org](http://www.applytexas.org)) by March 20

Completing these steps ensures that tuition and mandatory fees at the Alamo Colleges are covered for Bexar County students who graduate from participating high schools. As last-dollar funding, **AlamoPROMISE** covers the gap between financial aid and the cost of tuition for up to three years. Your household income does not disqualify you and because we know plans sometimes change, you are not locked into a commitment.



Need assistance? We are here to help: **St. Philip's College** (210-486-2150), [spc-recruit@alamo.edu](mailto:spc-recruit@alamo.edu). Learn more at <https://www.alamo.edu/promise/>, or email the **AlamoPROMISE** team at [Promise@alamo.edu](mailto:Promise@alamo.edu) for assistance.

## Student Financial Aid Office (MLK and SW Campus)

For more information contact Grace Zapata 210-486-2269.

The campus remains closed due to coronavirus, but teaching, learning, and staff support are provided remotely. Please visit the [COVID-19 Update Page](#) or key in <https://coronavirus/www.alamo.edu/> to see the latest developments. Updates are posted as soon as they become available.

**April is Financial Literacy Awareness Month**, and we have partnered with Financial Literacy to provide some really exciting virtual events throughout the month of April. Be sure to join in as the events are available on students' time. Find us on Facebook, read more on the pages that follow (pages 16-17), or contact Enida Rehome (210-486-2140) for more information about these events.

**Financial Aid TV** is available 24/7. It can be found at <https://www.alamo.edu/admission--aid/paying-for-college/financial-aid/financial-aid-tv/>.

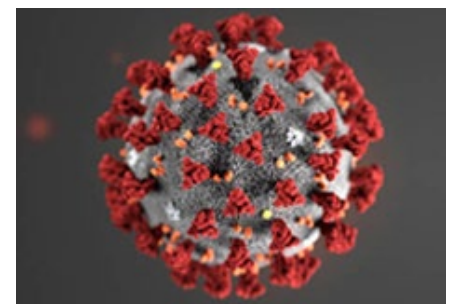
For more **Financial Aid news** call 210-21ALAMO (210-212-5266), or call Toll Free at 1-844-20ALAMO (1-844-202-5266), email [dst-sfs@alamo.edu](mailto:dst-sfs@alamo.edu), or visit <https://www.alamo.edu/spc/admissions/pay-for-college/financial-aid/>. Please have or include your Banner ID when calling or emailing.

## SPC Health Center (MLK and SW Campus)

For more information contact Eliah Casillas at 210-486-2222.

### Coronavirus:

Stay aware of the latest information on the COVID-19 outbreak, available on the WHO website and through your national and local public health authority. Most people who become infected experience mild illness and recover, but it can be more severe for others.



## SPC Health Center (continued)

For more information contact Eliah Casillas at 210-486-2222.

Take care of your health and protect other persons at risk: older adults, people with HIV, asthma, pregnant women (we are still learning how it spreads but great caution is emphasized). Please isolate at home and only run errands for greatly needed items. When blowing your nose, use tissue only one time and toss the tissue away immediately. Wash **your** hands frequently for a full 20 seconds. Maintain social distancing, avoid touching eyes, nose and mouth, and practice respiratory hygiene. If you have fever, cough and difficulty breathing, seek medical care early with your primary care (and follow their recommendation and referral). Stay informed and follow advice given by your healthcare provider.

### Reminders:

Eat healthy and include foods high in vitamin C, include some form of exercise daily, take out old CD's or LP's and listen to them, call a friend on the phone, if you have boxed games, puzzles, or cards play with those persons that you are housed with during this time. In other words, get away from the computer, cell phone, TV, and enjoy the bonding time in real time.

## Student Life (MLK and SW Campus)


For more information contact Dr. Angela McPherson Williams at 210-486-2090.

The college remains closed due to COVID-19, but teaching, learning, and staff support are provided remotely. Please visit the [COVID-19 Update Page](#) or key in <https://coronavirus/www.alamo.edu/> to see the latest developments. Updates are posted as soon as they become available.

All large Alamo College District events are cancelled, postponed or will be delivered virtually until further notice. A large event is defined as an event or meeting over 50 people. No large events should be scheduled during this time. We will continue to monitor the risk and reassess as needed. Please check your alamo.edu email regularly to stay informed.

**Celebrating 25 Years of Fiesta!** Contact us if you are a vendor or want more information: Student Life, 210-486-2135.

**Event:** Spirit Day  
**Date/Time:** April 1, 8, 15, 22 and 29  
**Location:** Online  
**Summary:** Wear your favorite St. Philip's College shirt or wear school colors, royal blue and white, and post pictures on Instagram.



**25**  
Years of Fiesta!

St. Philip's College 2020  
**CultureFest**  
& Rib Cook-Off

**VIVA FIESTA!**

**Thursday, November 12, 2020 • 10:00 AM - 4:00 PM**

Admission is FREE! Proceeds from CultureFest help fund student scholarships.  
1801 Martin Luther King Drive, San Antonio, TX 78203  
alamo.edu/spc/culturefest

**Fiesta** SAN ANTONIO

**ALAMO COLLEGES DISTRICT**  
St. Philip's College

**ALAMO COLLEGES DISTRICT**

**Malcolm Baldrige**  
National Quality Award  
2018 Award Recipient

## Student Life (continued)

For more information contact Dr. Angela McPherson Williams at 210-486-2090.



**Event: Lunch and Lead**

**Date/Time:** April 9

**Location:** Online: Zoom Meeting <https://alamo.zoom.us/j/230891671>, Meeting ID 230 891 671  
Dial by your location +1 346 248 7799, Meeting ID 230 891 671

**Summary:** Come join us for an engaging hour of leadership, event planning support, and essential updates from the Department of Student Life.

**Event: Student Org/Athletic Awards Ceremony**

**Date/Time:** TBA

**Location:** Online

**Summary:** The Department of Student Life will recognize student organization members and athletes for their service, leadership and commitment during the 2019 – 2020 academic year.

## Tutoring Services and Service Learning (MLK and SW Campus)

For more information contact Elizabeth Castillo at 210-486-2473.

### DACA Allies

Speak confidentially to District Coordinator Carmen de Luna-Jones (210-485-2080), SPC Director Liz Castillo (210-486-2473), or SPC Counselor Rosalinda Rivas (210-486-2117). Find additional resources for Deferred Action for Childhood Arrivals (DACA) at <https://www.alamo.edu/spc/admissions/specific-populations/daca/>.

### Financial Literacy Program

**Event: Free Online Financial Coaching**

**Date/Time:** By appointment

**Location:** <https://www.aie.org/coaching/>

**Summary:** This free service, in partnership with Trellis, is designed to help you make smart financial decisions. For more information contact Enida Rehome (210-486-2140).

**Event: Financial Literacy Month Week 1**

**Date/Time:** April 1 - April 5 / Ongoing (on Students' Time)

**Location:** Financial Literacy page ([www.alamo.edu/spc](http://www.alamo.edu/spc) keyword: Financial Literacy)

**Summary:** Students will learn how to Borrow Smart, test their knowledge on subsidized and un-subsidized student loans, submit complete certificates from iGrad, and apply for the 2020/2021 academic school year Financial Aid. For more information contact Enida Rehome (210-486-2140).

**Event: Financial Literacy Month Week 2**

**Date/Time:** April 6 - April 12 / Ongoing (on Students' Time)

**Location:** Financial Literacy page ([www.alamo.edu/spc](http://www.alamo.edu/spc) keyword: Financial Literacy)

**Summary:** Students will learn how to Monitor and Protect their credit/credit report and identity, test their knowledge on default, forbearance, delinquency student loans, and submit complete certificates from iGrad, and apply for the 2020/2021 academic school year Financial Aid. For more information contact Enida Rehome (210-486-2140).

**Event: Financial Literacy Month Week 3**

**Date/Time:** April 13 - April 19 / Ongoing (on Students' Time)

**Location:** Financial Literacy page ([www.alamo.edu/spc](http://www.alamo.edu/spc) keyword: Financial Literacy)

**Summary:** Students will learn how to Plan and Spend, test their knowledge about ways to track their student loan debt, submit complete certificates from iGrad, and apply for the 2020/2021 academic school year Financial Aid. For more information contact Enida Rehome (210-486-2140).





# Tutoring Services and Service Learning (continued)

For more information contact Elizabeth Castillo at 210-486-2473.



## Event: Financial Literacy Month Week 4

**Date/Time:** April 20 - April 26 / Ongoing (on Students' Time)

**Location:** Financial Literacy Page ([www.alamo.edu/spc](http://www.alamo.edu/spc) keyword: Financial Literacy)

**Summary:** Students will be able to learn about how to Save and Build for the Future, test their knowledge on Repayment options on their student loans, submit complete certificates from iGrad, and apply for the 2020/2021 academic school year Financial Aid. For more information contact Enida Rehome (210-486-2140).

## Event: Financial Literacy Month Week 5

**Date/Time:** April 27- April 30 / Ongoing (on Students' Time)

**Location:** Financial Literacy Page ([www.alamo.edu/spc](http://www.alamo.edu/spc) keyword: Financial Literacy)

**Summary:** Students will learn why Purchasing a Used Car is beneficial, test their knowledge on exit counseling when you are graduating or dropping less than a part time basis, submit complete certificates from iGrad, and apply for the 2020/2021 academic school year Financial Aid. For more information contact Enida Rehome (210-486-2140).

## Tutoring Services

During remote learning, tutoring is available online with St. Philip's tutors through Brainfuse or Zoom. Subjects offered and tutor email addresses can be found at:

<https://www.alamo.edu/spc/academics/academic-resources/tutoring-centers/tutoring-and-technology-center/>.

## Veterans Affairs (MLK and SW Campus)

For more information contact Veronica Griego at 210-486-2540.

<b>Veterans Affairs</b>	Tony Gable	<a href="mailto:lgable@alamo.edu">lgable@alamo.edu</a>	210-486-2521	(O-Z)
<b>Certified Academic Advisors:</b>	Alicia Stolte	<a href="mailto:astolte2@alamo.edu">astolte2@alamo.edu</a>	210-486-2539	(Gb-N)
	Vincent Garcia	<a href="mailto:vgarcia365@alamo.edu">vgarcia365@alamo.edu</a>	210-486-2522	(A-Ga)

We are dedicated to providing the highest quality and comprehensive support to student veterans and their family members in an atmosphere that provides commitment, respect, and academic excellence. The Veterans Affairs office assists students by providing certification of courses and transmitting enrollment information to the Department of Veteran Affairs. For more information contact Veronica Griego (210-486-2540).

## New Student Orientation (NSO):

New Student Orientation is reserved for students currently enrolling for the Summer 2020 Semester. Fall students will need to select a date after April 13, 2020. To view Checklist, online Registration Form, NSO handout, reschedule NSO, Veteran (and dependent family members) and Military Joint Base San Antonio (JBSA) sessions, visit

<https://www.alamo.edu/spc/academics/academic-resources/academic-advising/new-student-orientation/>.



**Shape your future START HERE >** **United States Census 2020** **You can respond to the 2020 Census in Spanish.** By April 1, 2020, every home will receive an invitation to participate in the 2020 Census. You will have three options for responding: Online. By phone. By mail.

**Dale forma a tu futuro EMPIEZA AQUÍ >** **United States Census 2020** **Usted puede responder al Censo del 2020 en español.** Para el 1 de abril del 2020, cada hogar recibirá una invitación para participar en el censo. Usted <https://2020census.gov/es.html>



**On campus. Off campus. Everyone counts.**

If you live off campus, you'll need to respond to the 2020 Census. Because unlike your on-campus classmates, you likely haven't been counted through campus housing. Here's your opportunity to impact funding for programs like Pell Grants and health care services.

**Census data impacts funding for things like:**

- > School safety
- > Federal Pell Grant Program
- > Adult education grants
- > Agriculture, science, and engineering education
- > Community mental health services
- > Student wellness programs
- > Medical Assistance Program
- > School breakfast and lunch and after-school programs
- > State Children's Health Insurance Program

2020CENSUS.GOV Shape your future START HERE > United States Census 2020

For more information, visit: 2020CENSUS.GOV Shape your future START HERE > United States Census 2020

## Volunteer Income Tax Assistance - VITA Program (MLK and SW Campus)

For more information contact Kenneth Bankston at 210-486-2872.

The college remains closed due to coronavirus, but teaching, learning, and staff support are provided remotely. Please visit the [COVID-19 Update Page](#) or key in <https://coronavirus/www.alamo.edu/> to see the latest developments.

The VITA Program at SPC is cancelled for this tax year. For more information contact us at 210-486-2872, via email at [spc-vita@alamo.edu](mailto:spc-vita@alamo.edu), or visit <https://www.alamo.edu/spc/experience-spc/community/community-resources/vita/>.

**Some VITA tax preparation sites are still open and can assist the public**

The following [VITA tax preparation centers](#) are open. Must call before coming to the center.

Willie Velasquez Center - 210-207-6575  
 The Neighborhood Place - 210-431-7500  
 Guadalupe Community Center - 210-222-2975

## Centers of Excellence for Math & Science (SW Campus)

For more information contact Maria Rodriguez at 210-486-7123, or Dr. Jo D. Duncan at 210-486-7121.

The campus remains closed due to coronavirus, but teaching, learning, and staff support are provided remotely. Please visit the [COVID-19 Update Page](#) or key in <https://coronavirus/www.alamo.edu/> to see the latest developments.

For more information on college and career awareness of science, technology, engineering and mathematics (STEM), call Maria Rodriguez (210-486-7123), or visit our website at <https://www.alamo.edu/spc/academics/academic-resources/academic-centers/centers-of-excellence/>.

## Math Emporium Lab (SW Campus)

For more information contact Renita Mitchell at 210-486-2607.

**Math Bridge:** For more information about remote tutoring contact Paula Englebert (210-486-7241), or visit <https://www.alamo.edu/spc/academics/academic-resources/tutoring-centers/mathemporium/>.



**SPC Alumna Ashley Narvarez**

**AAS** - Aircraft Technician  
 Airframe  
**Certificates** - Aircraft  
 Structures Mechanics, and  
 Aircraft Mechanics

## Workforce Training Network (SW Campus)

For more information contact Alfred Landeros at 210-486-7082.

**Workforce Training and Certifications** - The Workforce Training Network remains closed due to coronavirus, but teaching, learning, and staff support are provided remotely. Please visit the [COVID-19 Update Page](#) or key in <https://coronavirus/www.alamo.edu/> to see the latest developments. Updates are posted as soon as they become available.

We offer non-degree courses, certificates, and industry specific certifications. To learn more about career, job training and continuing education that can meet your goals contact Alfred Landeros (210-486-7082), or via email ([alanderos1@alamo.edu](mailto:alanderos1@alamo.edu)). Please provide your name, telephone number, email address, and Banner ID when calling or emailing. Learn more at <https://www.alamo.edu/spc/academics/wtn/>.

**CALL FOR  
24-HR HELP**

National Human  
Trafficking Hotline:  
1 (888) 373-7888

San Antonio  
Rape Crisis Center:  
(210) 349-7273

Centro Seguro  
Drop In Center:  
(210) 340-8090

San Antonio Police  
(Non-Emergency):  
(210) 207-7273

## Workforce Solutions Alamo - WSA (Off-Site)

For more information contact Rosie Maldonado at 210-582-1826.



**American Job Center - We Help with Employment Information and Opportunities.** In order to comply with ongoing emergency orders the Workforce Solutions Alamo (WSA) Career Centers have been modified and remain open to clients throughout the city by appointment only as of March 24, 2020. We are here to help! The Alamo Region serves Atascosa, Bandera, Bexar, Comal, Frio, Gillespie, Guadalupe, Karnes, Kendall, Kerr, McMullen, Medina and Wilson counties.

All WSA events and job fairs are cancelled due to COVID-19. Inquiries, questions and comments are made by calling 210-272-3260, or completing the **Inquiry form** on our website <https://www.workforcesolutionsalamo.org/>. Expect some delays due to high volume of inquiries.

## Central Texas Technology Center - CTTC (Off-Site)

For more information contact Janice Roth at 210-486-7410 (or 1-830-609-2106).

The CTTC remains closed due to coronavirus, but teaching, learning, and staff support are provided remotely. Please visit the [COVID-19 Update Page](#) or key in <https://coronavirus/www.alamo.edu/> to see the latest developments. Updates are posted as soon as they become available.

The CTTC provides higher education and technical skills training to promote employment opportunities in high demand occupations, and is located at 2189 FM-758, New Braunfels, TX (78130). For more information visit <https://www.alamo.edu/cttc/central-texas-technology-center/>.

Programs include Vocational Nursing (SPC Off-Site); Economic and Workforce Development (Advanced Manufacturing & Logistics, Health & Biosciences, and Science & Technology); and Integrated Basic Education Skills Training. Review the Spring 2020 Course Schedule at <https://www.alamo.edu/cttc/course-scheduleregister/>, and contact us:

Becky Cole, Student Advisor	<a href="mailto:bcole18@alamo.edu">bcole18@alamo.edu</a>	210-486-7422
Leonor Wright, Senior Advisor	<a href="mailto:lwright3@alamo.edu">lwright3@alamo.edu</a>	210-486-7409
Janice Roth, Director	<a href="mailto:jroth5@alamo.edu">jroth5@alamo.edu</a>	210-486-7410 (or 1-830-609-2106)

Please provide your name, telephone number, email address, and Banner ID when calling or emailing. Tell us how we can improve our services by taking our survey at <https://www.surveymonkey.com/r/LL76ZT5>.

## Deferred Action (Off-Site)

For more information contact Carmen De Luna-Jones at 210-485-0280.

The Brackenridge and Harlandale Education Centers remain closed due to coronavirus, but teaching, learning, and staff support are provided remotely. Please visit the [COVID-19 Update Page](#) or key in <https://coronavirus/www.alamo.edu/> to see the latest developments.

Let me know how we can help. Call 210-485-0280 or email me at [mdeluna-jones@alamo.edu](mailto:mdeluna-jones@alamo.edu). Please provide your name, telephone number, email address, and Banner ID when calling or emailing.

Special populations: In effort to provide access to higher education for the entire community, Alamo Colleges District offers programs and support services to help individuals from all walks of life achieve their dreams by way of earning a degree.

To locate resources on immigrant rights to advocate for yourself and protect your community, visit <https://www.alamo.edu/spc/admissions/specific-populations/daca/>. View an important immigrant's training video, "Know Your Rights & Family Preparedness". The video can also be viewed in Spanish.

### **What should I do if I believe an enforcement action has taken place that is inconsistent with this guidance?**

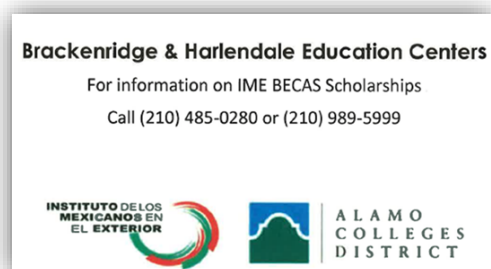
DHS has explained that there are a number of locations where an individual may lodge a complaint with DHS about a particular immigration enforcement action that may have taken place in violation of these or other policies. You may find information about these locations, and information about how to file a complaint, on the DHS website at <https://www.dhs.gov/>, the CBP website at <https://www.cbp.gov/>, or ICE website at <https://www.ice.gov/>.

**You may contact ICE Enforcement and Removal Operations (ERO)** through the Detention Reporting and Information Line (888-351-4024), the local ERO office: San Antonio Field Office (210-283-4750), or the online form at <https://www.ice.gov/webform/ero-contact-form>. The Civil Liberties Division of the ICE Office of Diversity and Civil Rights may be contacted at 202-732-0092 or [ICE.Civil.Liberties@ice.dhs.gov](mailto:ICE.Civil.Liberties@ice.dhs.gov).

**You may contact the CBP Information Center** to file a complaint or compliment via phone at 877-227-5511, or submit an email through the website at <https://help.cbp.gov>.

**Where should I report discrimination if I believe it is taking place in my school?** Anyone with information about discrimination occurring in schools, including discrimination on the basis of race, color, or national origin (which may include citizenship or immigration status), may file a complaint by contacting the U.S. Department of Education, Office for Civil Rights via <https://www.state.gov/s/ocr/>, 800-421-3481 or TDD: 800-877-8339 (for language assistance contact 800-USA-LEARN {800-872-5327}) or by contacting the U.S. Department of Justice, Civil Rights Division, Educational Opportunities Section via <https://www.justice.gov/crt/educational-opportunities-section>, 877-292-3804, or TTY: 800-514-0383.

**Will enforcement actions ever occur at sensitive locations?** DHS has explained that immigration enforcement actions may occur at sensitive locations in limited circumstances, but should generally be avoided. DHS officers and agents from U.S. Immigration and Customs Enforcement (ICE) or U.S. Customs and Border Protection (CBP) may conduct an enforcement action at a sensitive location only with prior approval from an appropriate supervisory DHS official, or if the enforcement action involves exigent circumstances related to national security, terrorism, or public safety, or where there is imminent risk of destruction of evidence material to an ongoing criminal case.





U.S. Citizenship and Immigration Services

***Don't be afraid to ask for help***

Immigration relief is available for victims of human trafficking, domestic violence and other crimes. Visit <https://www.uscis.gov/tools/humanitarian-benefits-based-resources/resources-victims-human-trafficking-other-crimes>.

**Alamo Colleges Foundation - DREAMers SCHOLARSHIP**

The 2020 – 2021 Scholarship Application is online at [www.alamo.edu/foundation/scholarships](http://www.alamo.edu/foundation/scholarships). DREAMers submit the application online, and retain the application number given to you for use on the Certification form. Submit the Scholarship Certification form to BETC before the deadline. For more information call Carmen De Luna Jones (210-486-0280).

**Application Priority Deadline:**

March 29, 2020

**Application Final Deadline:**

September 6, 2020



**UTSA Dreamers Resource Center**  
*(Student Center for Community Engagement and Inclusion)*

The **UTSA Dreamer Resource Center** is celebrating its second anniversary! The Center provides remote support services to Dreamers in navigating academic, mental health and legal resources. Call 210-458-7777, email [dreamers@utsa.edu](mailto:dreamers@utsa.edu), or visit [https://www.utsa.edu/dreamers/about/index.html?mc\\_cid=87f9bf2c86&mc\\_eid=0498ef8875](https://www.utsa.edu/dreamers/about/index.html?mc_cid=87f9bf2c86&mc_eid=0498ef8875).

**FACT SHEET FOR FAMILIES AND SCHOOL STAFF: LIMITATIONS ON DHS IMMIGRATION ENFORCEMENT ACTIONS AT SENSITIVE LOCATIONS**

All children have a right to a free public education, regardless of their actual or perceived immigration or citizenship status or that of their parents.<sup>1</sup> Education leaders, teachers, students, and families, have asked questions about guidance that was released by the U.S. Department of Homeland Security (DHS) that limits immigration enforcement actions from occurring at schools and other “sensitive locations.” This DHS guidance is at: <https://www.cbp.gov/border-security/sensitive-locations-faqs>. To respond to those questions, the U.S. Department of Education has worked with DHS to prepare this fact sheet, intended to help parents, families, educators, and other school staff understand the DHS guidance.

In general, DHS has explained that immigration enforcement actions may not occur at or in “sensitive locations.”

These locations include:



Schools, such as known and licensed daycares, pre-schools and other early learning programs; primary schools; secondary schools; post-secondary schools up to and including colleges and universities; as well as scholastic or education-related activities or events.



School bus stops that are marked and/or known to the officer, during periods when children are present at the stop.



Medical treatment and health care facilities, such as hospitals, doctors' offices, accredited health clinics, and emergent or urgent care facilities.



Places of worship, such as churches, synagogues, mosques, and temples.



Religious or civil ceremonies or observances, such as funerals and weddings.



During public demonstrations, such as a march, rally, or parade.



# Scholarships and Giving Back Opportunities

**Student Engagement Grants (SEG):** Are you a full-time student? Do you have a GPA of 2.5 or higher? If so, you may qualify for a **\$1,000 Student Engagement Scholarship**. Students awarded this scholarship will participate in the **QEP Ethical Decision-Making Reading Buddies at Bowden Academy**. To apply: <https://www.alamo.edu/spc/admissions/pay-for-college/scholarships/seg/> or turn in application in SLC 219. For more information contact Irene Young at 210-486-2391, or email at [iyoung@alamo.edu](mailto:iyoung@alamo.edu).

**SEG Projects:** Other grant projects are Allied Construction Technology (ACT) Community Service, Alamo Institute Student Leaders, Biology Research Project, Byrd Sanctuary Peer Tutors, Campus Tour Leaders, Collegiate 100, Cyber Tigers, Disability Services Peer Provider, Extramurals Sports Program, Jessica's Project, Middle College Project, Peer Mentor Tutoring-Reading & Writing, QEP (What Would You Do?), SPC Community Garden, Spirit & Pride Crew, STEM Advocates, Stinson Air Museum, Student Government Association (SGA), Tiger PAWS (Personal Academic Writing Space), and Volunteer Income Tax Assistance (VITA). For more information visit <https://www.alamo.edu/spc/admissions/pay-for-college/scholarships/seg/> and connect with the various Project Managers.

## SPC Scholarship Office

*For more information contact Gloria Hernandez at 210-486-2498.*

**St. Philip's College Scholarships:** All students are encouraged to apply online at <https://www.alamo.edu/about-us/offices-departments/departments/foundation/students/>.

**Priority Deadline: March 29, 2020**

**Scholarship Amount: Varies**

**Final Deadline: September 6, 2020**

**Harvey Najim Pathways:** Must be graduating from a high school in one of these ISD's: East Central, Edgewood, Harlandale, San Antonio, South San, Southside, Southwest, or Somerset. Pursue degree in Cyber-Security, Information Technology, Nursing, or Respiratory Care. Come by the Scholarship Office, Sutton Learning Center (SLC), Room 319E, for application. For more information call Gloria Hernandez (210-486-2498).

**Deadline: N/A**

**Scholarship Amount: \$2,500**

**San Antonio Area Foundation – Robert B. Taylor Scholarship:** Over 90 scholarships available. All students are encouraged to apply. Call 210-225-2243 or visit <http://saafdn.org/Scholarships/Welcome-Scholarship-Seekers>.

**Deadline: N/A**

**Scholarship Amount: Varies**

## 2020-2021 Alamo Colleges Foundation Scholarship Application Priority Deadline Extended:

The health, well-being and continued success of our students is uppermost in our minds during this period of transition to remote teaching and learning. To ensure that our students have the opportunity to apply for much-needed Alamo Colleges Foundation scholarships, [the 2020-2021 scholarship application](#) priority deadline has been extended to 11:59 p.m. on Monday, April 6, 2020. Please encourage students to take advantage of this extended deadline.

# College for All Texans: Educational Aid Exemption Application

For more information, contact Alan David Ahmad at 210-485-0613.

The **EAE** is available to eligible students taking courses toward teacher certification and pays for the tuition and required fees for said coursework in the semester for which it was applied. The **Advisor-Cert-Form** is also available in the Student Financial Services office on your campus. Visit <http://www.collegeforalltexans.com/apps/financialaid/tofa2.cfm?ID=572>.



## White House Initiative on Historically Black Colleges and Universities

U.S. Department of Education

The White House Initiative on Historically Black Colleges and Universities offers full-time internships year-round (spring, summer, and fall). Part-time applicants who can commit to at least 20 hours a week will be considered, although the Initiative prioritizes full-time applicants (32-40 hours a week). Internships are available in Washington D.C. at the U.S. Department of Education, Initiative headquarters.

**How to Apply:** Visit the [Department of Education's Internship page](#) for detailed instructions and the application.

- **Fall Deadline – July 15**  
Dates of program: September through December
- **Winter/Spring Deadline – October 1**  
Dates of program: January through May
- **Summer Deadline – March 15**  
Dates of program: May/June through July/August

<b>FEDERAL SECTOR INTERNSHIPS</b> <b>HACU NATIONAL INTERNSHIP PROGRAM</b> Work in Major U.S. Cities   Gain Real World Experience <b>CORPORATE SECTOR INTERNSHIPS</b>		Paid Internships for all Majors.  Work in Washington, D.C. or other major cities.									
<p>To learn more, contact our Washington D.C. office at 202-467-0893, or visit <a href="http://www.hacu.net/hnip">www.hacu.net/hnip</a>.</p> <p><b>Eligibility</b></p> <ul style="list-style-type: none"> <li>• Be enrolled in a degree-seeking program</li> <li>• Must be an undergraduate who has completed freshman year</li> <li>• 3.0 GPA recommended</li> <li>• Be authorized or eligible to work by law in the U.S.</li> <li>• Completion of freshman year in college before the internship begins</li> </ul>	<p><b>Apply online at</b>  <a href="https://www.hacu.net/hacu/Apply Online.asp">https://www.hacu.net/hacu/Apply Online.asp</a></p> <table border="0"> <tr> <td><b>Sessions</b></td> <td><b>Deadlines</b></td> </tr> <tr> <td>Spring 2020:</td> <td><b>November 15, 2019*</b></td> </tr> <tr> <td>Summer 2020:</td> <td><b>February 14, 2020</b></td> </tr> <tr> <td>Fall 2020:</td> <td><b>June 5, 2020</b></td> </tr> <tr> <td></td> <td><b>*Extended date</b></td> </tr> </table>	<b>Sessions</b>	<b>Deadlines</b>	Spring 2020:	<b>November 15, 2019*</b>	Summer 2020:	<b>February 14, 2020</b>	Fall 2020:	<b>June 5, 2020</b>		<b>*Extended date</b>
<b>Sessions</b>	<b>Deadlines</b>										
Spring 2020:	<b>November 15, 2019*</b>										
Summer 2020:	<b>February 14, 2020</b>										
Fall 2020:	<b>June 5, 2020</b>										
	<b>*Extended date</b>										

## Central Texas Office for Refugees launches new hotline for refugee services

The [Central Texas Office for Refugees](https://www.rstx.org/who-we-are/ctor.html?mc_cid=cc04aaefee&mc_eid=0498ef8875) (CTOR) launched a hotline to reach underserved refugee populations including Asylees, Cuban/Haitian entrants, and victims of human trafficking. The hotline was created to assist those who might be experiencing barriers to accessing critical services and is available in 5 languages. CTOR can help with food, medical care, cash assistance, housing, employment, English classes, transportation, and more. Visit [https://www.rstx.org/who-we-are/ctor.html?mc\\_cid=cc04aaefee&mc\\_eid=0498ef8875](https://www.rstx.org/who-we-are/ctor.html?mc_cid=cc04aaefee&mc_eid=0498ef8875).

To access the hotline call or text "Hello" to 844-286-7797 for locations and more information about CTOR programs. Phone support is available in English, Kinyarwanda, Nepali, Spanish, and Tigrinya. Text support is available in English and Spanish.



## The Public Charge Rule took effect Feb. 24, 2020

The Public Charge rule took effect February 24th for all green card applications. It is important to remember a few important things about this rule:

1. The rule doesn't affect everyone, **only** those who are applying for a green card through a family member or employer, or applying for certain non-immigrant visas.
2. The rule **does not affect people** who already have green cards, applying for citizenship, are refugees or asylees, have VAWA status, U or T visa status. If you already have a green card or if you are applying for citizenship this new rule will not affect you.
3. The new rule adds certain public benefits to consideration when applying for a green card. The **benefits that USCIS will look at** are: TANF, Social Security Supplemental Income (SSI), food stamps (SNAP), Medicaid, Section 8 housing benefits, and subsidized housing. Benefits received by your U.S. citizen children will not count against you.
4. If the program is not on the list it is not considered under the new rule. Head Start, school lunch, WIC, immunizations, unemployment benefits, or tax credits, **are not benefits** that will automatically be weighed against you under this new rule.
5. There is a new form that will have to be included with your green card application. The new form asks for a lot of information about your household finances, your education, whether you have health insurance, and your credit history.
6. The rule took effect February 24, 2020, so if your application is on file before that time, the new rule won't apply to you. Any benefits you receive before February 24th won't count against you.

**Immigrant Legal Resource Center (ILRC)** is at <https://www.ilrc.org/>. For more information and resources in languages other than English visit the **Protecting Immigrant Families** webpage: [https://protectingimmigrantfamilies.org/know-your-rights/?mc\\_cid=cc04aaefee&mc\\_eid=0498ef8875](https://protectingimmigrantfamilies.org/know-your-rights/?mc_cid=cc04aaefee&mc_eid=0498ef8875).