



ALAMO  
COLLEGES  
DISTRICT

NORTHEAST LAKEVIEW COLLEGE

NORTHWEST VISTA COLLEGE

PALO ALTO COLLEGE

SAN ANTONIO COLLEGE

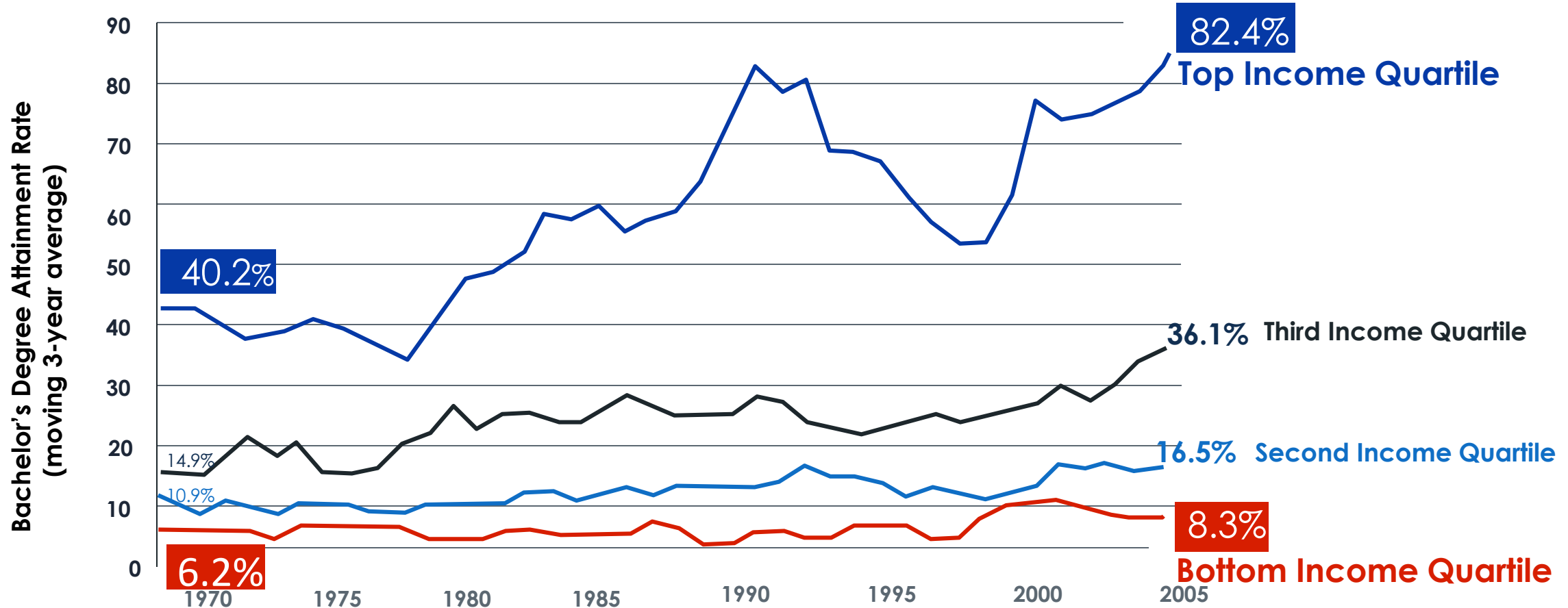
ST. PHILIP'S COLLEGE



College  
Promise

# The Challenge In Front Of Us

Baccalaureate Degree Attainment by Age 24 by Family Income Quartile

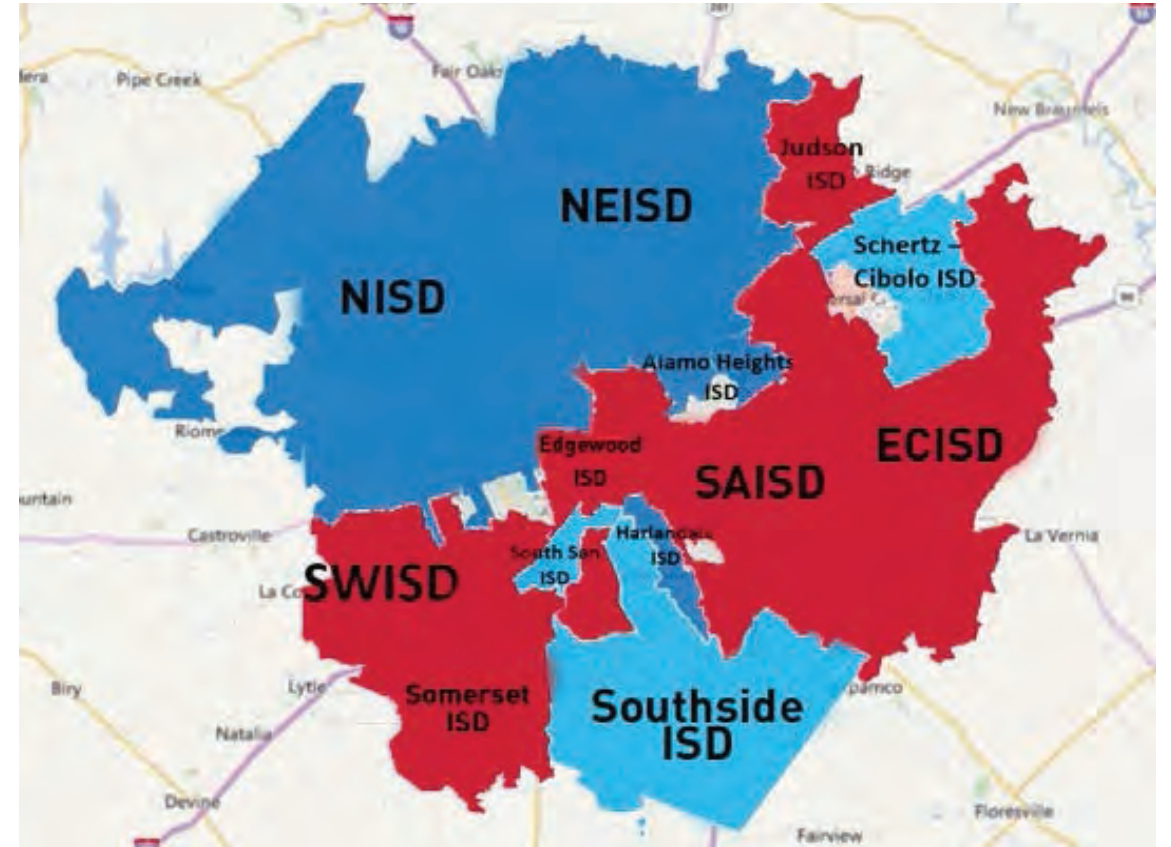




# College Participation Rates

## Bexar County 2017 High School Graduates Enrolled in TX Colleges

District	Total High School TX Graduates	Enrolled in College	% Not Found or Trackable
ALAMO HEIGHTS ISD	411	226 (54.99%)	185 (45.01%)
NORTHSIDE ISD	6856	3511 (51.21%)	3345 (48.79%)
HARLANDALE ISD	986	502 (50.91%)	484 (49.09%)
NORTH EAST ISD	4981	2527 (50.73%)	2454 (49.27%)
SCHERTZ-CIBOLO-U CITY ISD	1247	606 (48.60%)	641 (51.40%)
SOUTHSIDE ISD	325	150 (46.15%)	175 (53.85%)
SOUTH SAN ANTONIO ISD	533	240 (45.03%)	293 (54.97%)
SAN ANTONIO ISD	2672	1125 (42.10%)	1547 (57.90%)
SOMERSET ISD	250	105 (42.00%)	145 (58.00%)
EAST CENTRAL ISD	697	284 (40.75%)	413 (59.25%)
SOUTHWEST ISD	855	346 (40.47%)	509 (59.53%)
JUDSON ISD	1343	539 (40.13%)	804 (59.87%)
EDGEWOOD ISD	591	210 (35.53%)	381 (64.47%)



Source: THECB: High School Graduates Enrolled in Higher Education the Following Fall



ALAMO  
COLLEGES  
DISTRICT

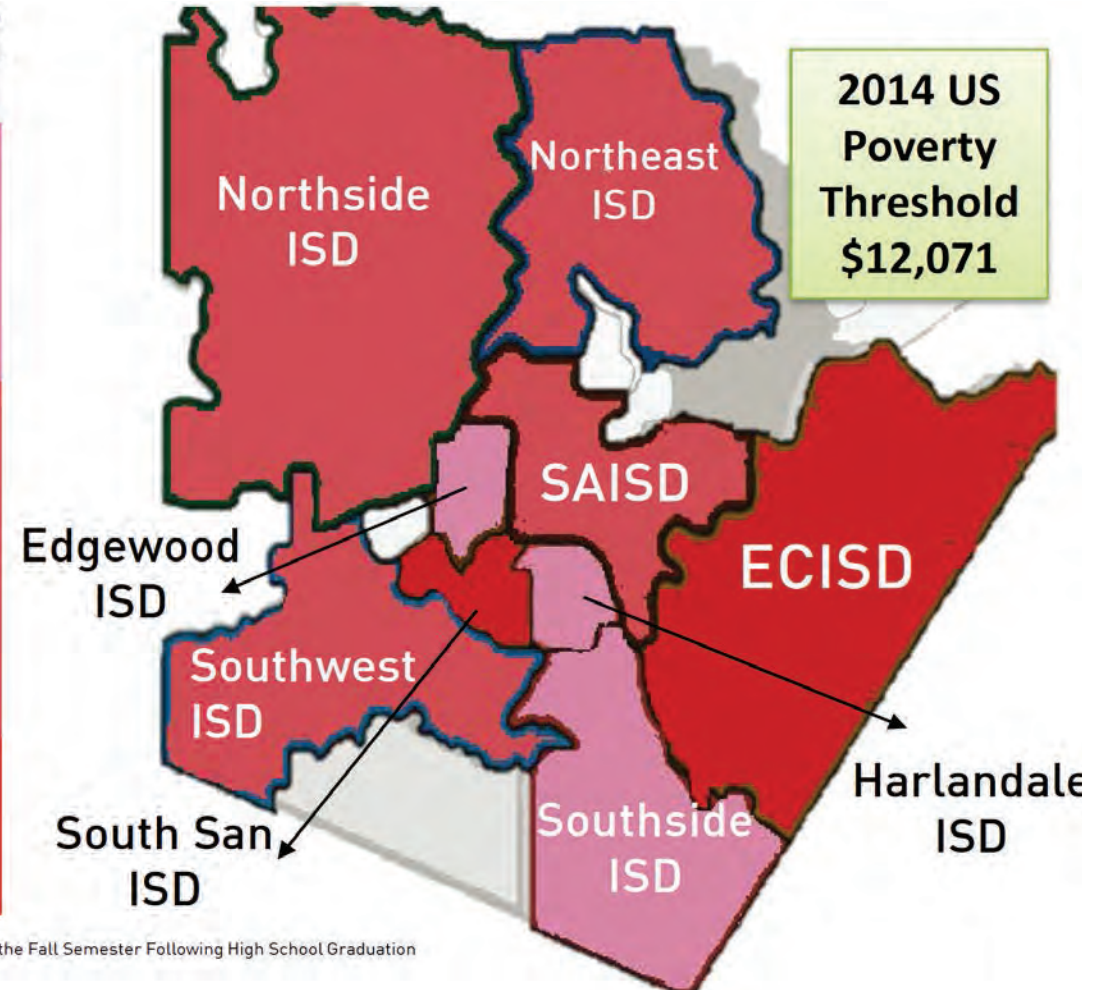




# H.S. Graduate Enrollment & Employment Outcomes

## Bexar County 2014 High School Graduates

School District Total Graduates	Not Found	Enrolled in TX College Only	Employed & Enrolled	Employed Only	Employed Only Annual Income (median avg.)
Harlandale ISD (887)	26.94% (239)	22.44% (199)	20.86% (185)	29.76% (264)	\$11,122.56
Edgewood ISD (533)	32.46% (173)	21.58% 115	16.89 (90)	29.07% (155)	\$10,595.96
Southside ISD (268)	29.48% (79)	20.90% (56)	22.39% (60)	27.23% (73)	\$10,582.88
Northeast ISD (4676)	30.35% (419)	22.88% (1070)	20.72% (969)	26.05% (1,218)	\$10,047.96
San Antonio ISD (2519)	28.30% (713)	18.90% (476)	20.44% (515)	32.35% (815)	\$9,779.12
Northside ISD (6444)	24.67% (1590)	21.57% (1390)	24.02% (1548)	29.73% (1916)	\$9,616.44
Southwest ISD (701)	30.81% (216)	15.69% (110)	18.83% (132)	34.66% (243)	\$9,604.00
South San ISD (500)	25.40% (127)	16.60% (83)	21.80% (109)	36.20% (181)	\$9,235.84
Eastcentral ISD (627)	27.43% (172)	17.54% (110)	19.62% (163)	35.41% (222)	\$8,788.72



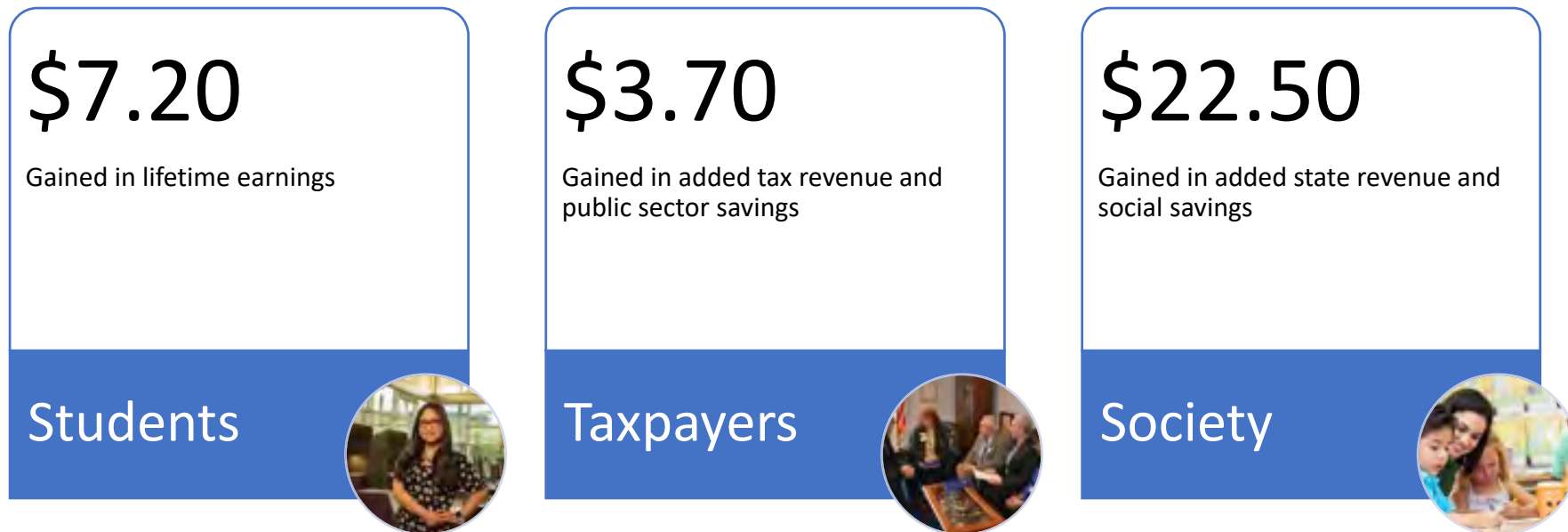
Source: TPEIR: 2013-2014 Texas Public High School Graduates, Texas Public College Enrollment and Employment Outcomes for the Fall Semester Following High School Graduation  
US Census Bureau: 2014 Poverty thresholds by Size of Family and Number of Children



# Partner To End Poverty In The San Antonio Region Through Education

The average associate degree graduate from the Alamo Colleges will see an increase in earnings of **\$9,400** each year compared to someone with a high school diploma working in Texas.

## For Every \$1 Spent by Students



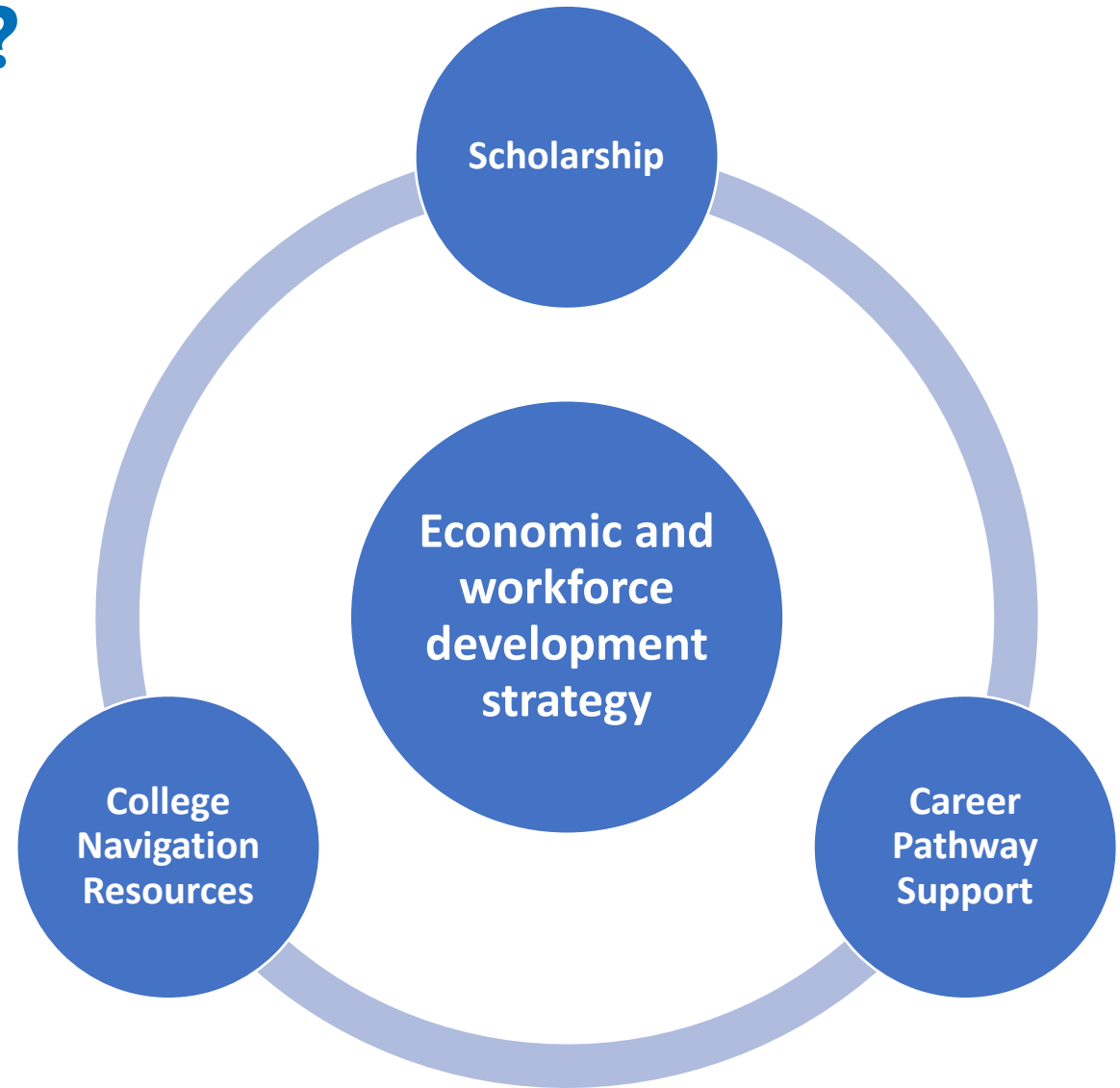


**The Alamo Colleges District  
is a catalyst for economic  
and social mobility.**



# What Is College Promise?

- The promise of the first two years of college for eligible students seeking associate degrees, transfer, certifications, and/or job training
- Scholarship enhanced with college navigation and career pathway support



# Why College Promise In Our Region?

- Need to foster an educated, diverse, and competitive workforce to fuel economic vitality

## Workforce Needs

- 65% of all jobs require credentials beyond high school by the year 2020; only 33% of adults have an associate's degree or higher in San Antonio

## Educational Attainment

- Only 45% of high school seniors attend college, and only 33% complete college in San Antonio (12% lower than the national average)

## College Matters

- Education impacts individual earnings five times more than any other demographic factor

## Equity

- Only 11% of 8<sup>th</sup> grade students from low-income families in Bexar County earned a two- or four-year degree six years after high school graduation



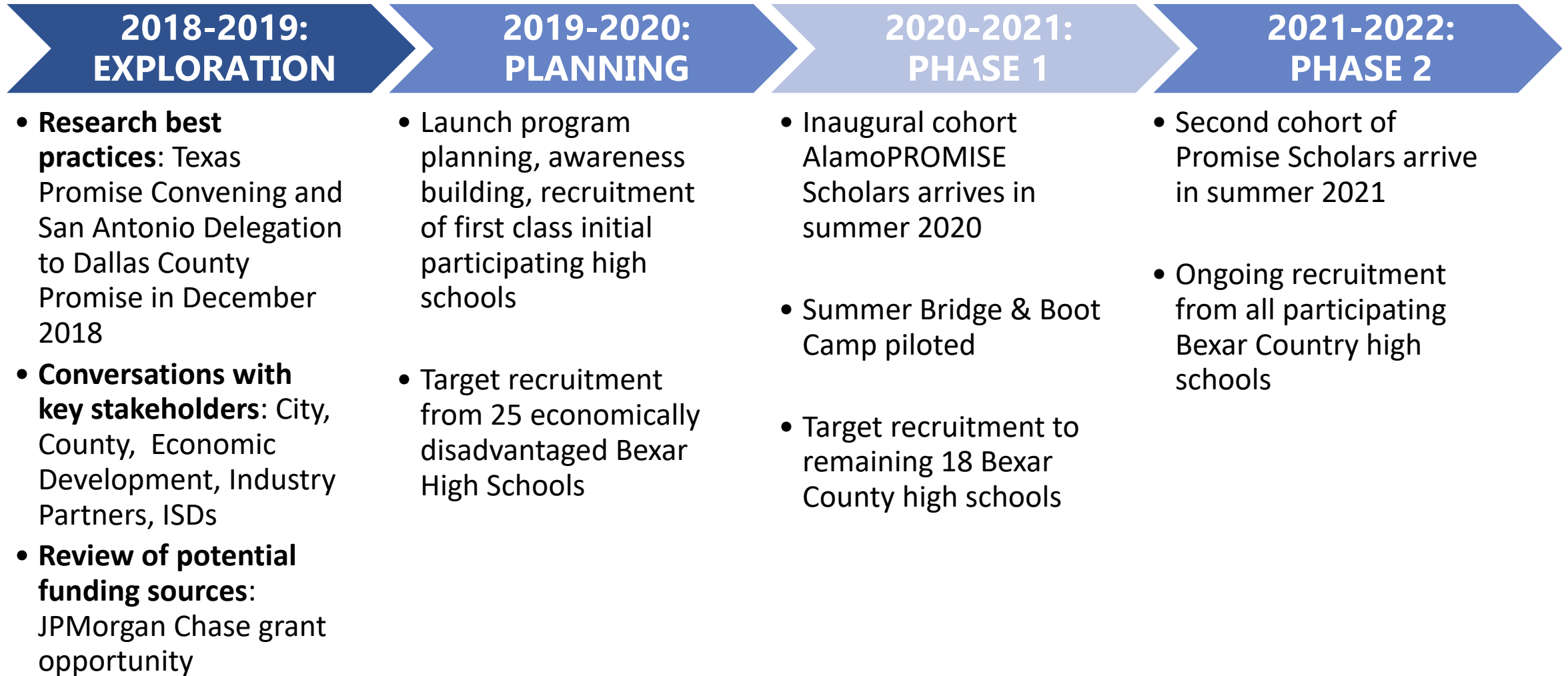


# What Are Proposed Key Elements Of AlamoPROMISE?

- The promise to students – AlamoPROMISE Scholars – is up to 60 semester credits hours, plus comprehensive student support and career resources
- Last-dollar scholarship to cover remaining costs after financial aid enhanced with college navigation and career pathway support for all eligible Bexar County high school seniors
- Students must meet eligibility criteria, pledge, apply, and enroll:
  - Participate in summer boot camp and workplace based experience (high wage, high demand emphasis)
  - Consideration of community service and/or experiential learning hours requirement
  - Maintain a 2.0 GPA and complete at least 18 credit hours per academic year

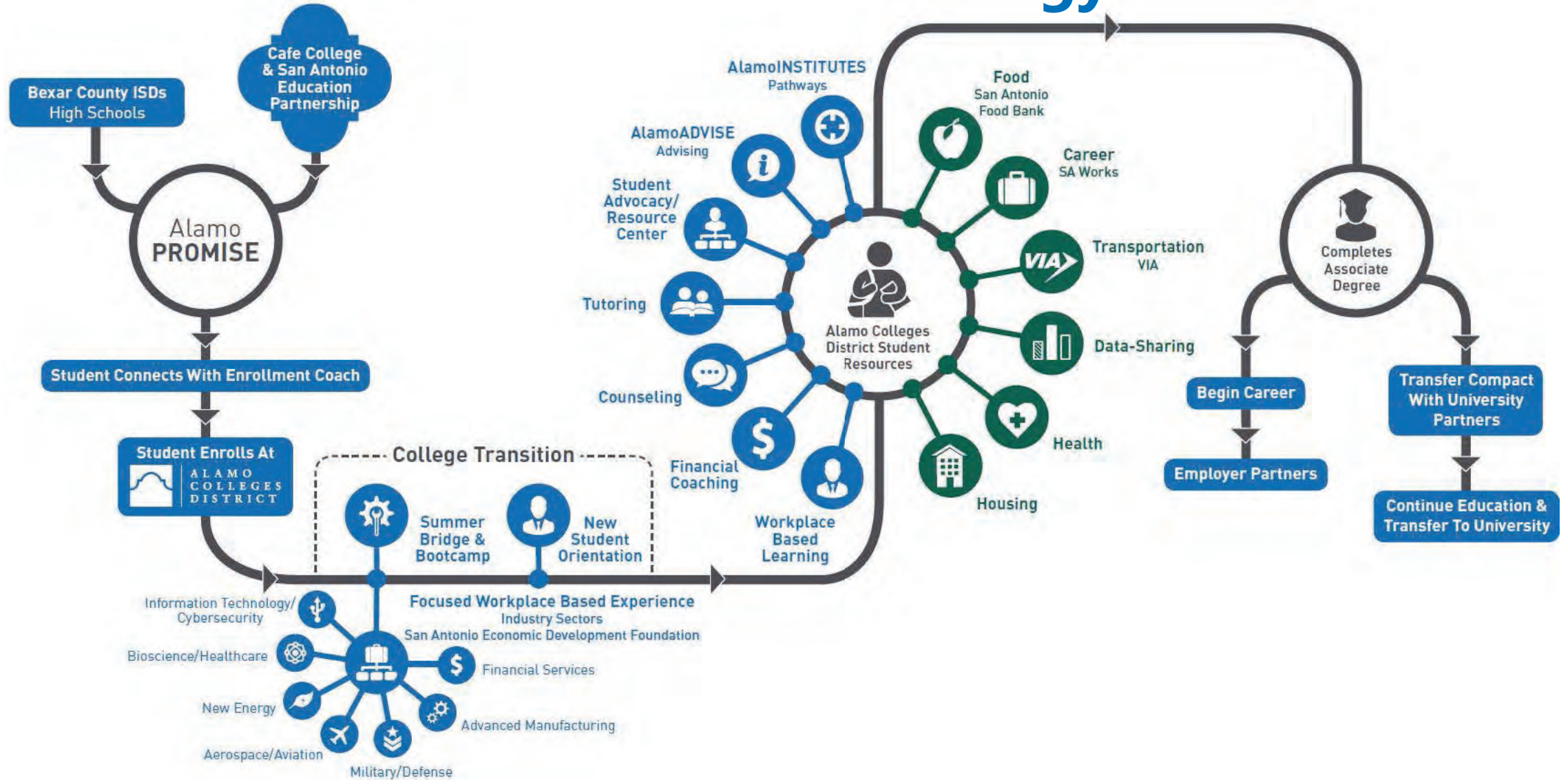


# What Are The Timeline Highlights Of AlamoPROMISE?





# The AlamoPROMISE Network Strategy



# Budget: Initial Scholarship Needs

Phase 1

9,377	# of Seniors	
6,564	to ACD	70.0%
\$ 1,782	18SCH multiplied by \$99	
<b>\$ 11,696,978</b>	<b>TOTAL tuition</b>	
2,095	# already attending ACD	

Phase 2

8,766	# of Seniors	
6,136	to ACD	70.0%
\$ 1,782	18SCH multiplied by \$99	
<b>\$ 10,934,581</b>	<b>TOTAL tuition</b>	
1,524	# already attending ACD	

## Preliminary Estimate of Funding

### Phase 1 - Beginning FY21

\$ 575,681	Promise Scholarship
\$ 10,569,942	Federal Financial Aid
\$ 551,355	State Financial Aid
<b>\$ 11,696,978</b>	<b>TOTAL</b>

## Preliminary Estimate of Funding

### Phase 2 - Beginning FY22 or FY23\*

\$ 5,313,242	Promise Scholarship
\$ 4,724,910	Federal Financial Aid
\$ 896,429	State Financial Aid
<b>\$ 10,934,581</b>	<b>TOTAL</b>

*\*dependent on funding availability*





# Budget: 5-Year Scholarship Outlook Estimates

<i>Financial Aid Support</i>	Year 1	Year 2	Year 3	Year 4	Year 5	5-Yr TOTAL
<b>Promise Scholarship (Last-dollar)</b>						
Phase 1	575,681	978,657	1,260,741	1,260,741	1,260,741	5,336,561
Phase 2		5,313,242	9,032,511	11,636,000	11,636,000	37,617,754
Total Promise	575,681	6,291,899	10,293,252	12,896,741	12,896,741	42,954,314
<b>Federal Financial Aid (Pell)</b>						
Phase 1	10,569,942	17,968,902	23,148,174	23,148,174	23,148,174	97,983,366
Phase 2		4,724,910	8,032,347	10,347,552	10,347,552	33,452,361
Total Federal	10,569,942	22,693,812	31,180,520	33,495,726	33,495,726	131,435,727
<b>State Financial Aid (TPEG)</b>						
Phase 1	551,355	937,304	1,207,468	1,207,468	1,207,468	5,111,063
Phase 2		896,429	1,523,930	1,963,180	1,963,180	6,346,720
Total State	551,355	1,833,733	2,731,398	3,170,648	3,170,648	11,457,782
<b>Total Financial Aid</b>	<b>11,696,978</b>	<b>30,819,444</b>	<b>44,205,171</b>	<b>49,563,115</b>	<b>49,563,115</b>	<b>185,847,824</b>



# Evaluation: Key Program Measures

- AlamoPROMISE will be successful when the overall success rate for Promise Scholars is at least 65%, meaning that Promise Scholars from their respective cohort earn a degree or certificate, transfer, or remain enrolled.
- Targets to be determined for the following:
  - Apply Texas Completion
  - FAFSA Completion
  - College Bridge Enrollment
  - First-day Class Enrollment
  - GPAs, persistence/retention, and completion rates
  - Certificates and associate degrees awarded, transfers, and bachelor's awarded
  - On-time (three-year) graduation rate; six-year graduation rates
  - Employment status post-graduation; annual earnings post-graduation
  - Demographics: gender, race/ethnicity, age, first-time-in-college (FTIC) status, Pell status, placement scores and income levels)





# Questions?

