



ALAMO
COLLEGES
DISTRICT

NORTHEAST LAKEVIEW COLLEGE

NORTHWEST VISTA COLLEGE

PALO ALTO COLLEGE

SAN ANTONIO COLLEGE

ST. PHILIP'S COLLEGE

Paving the Way

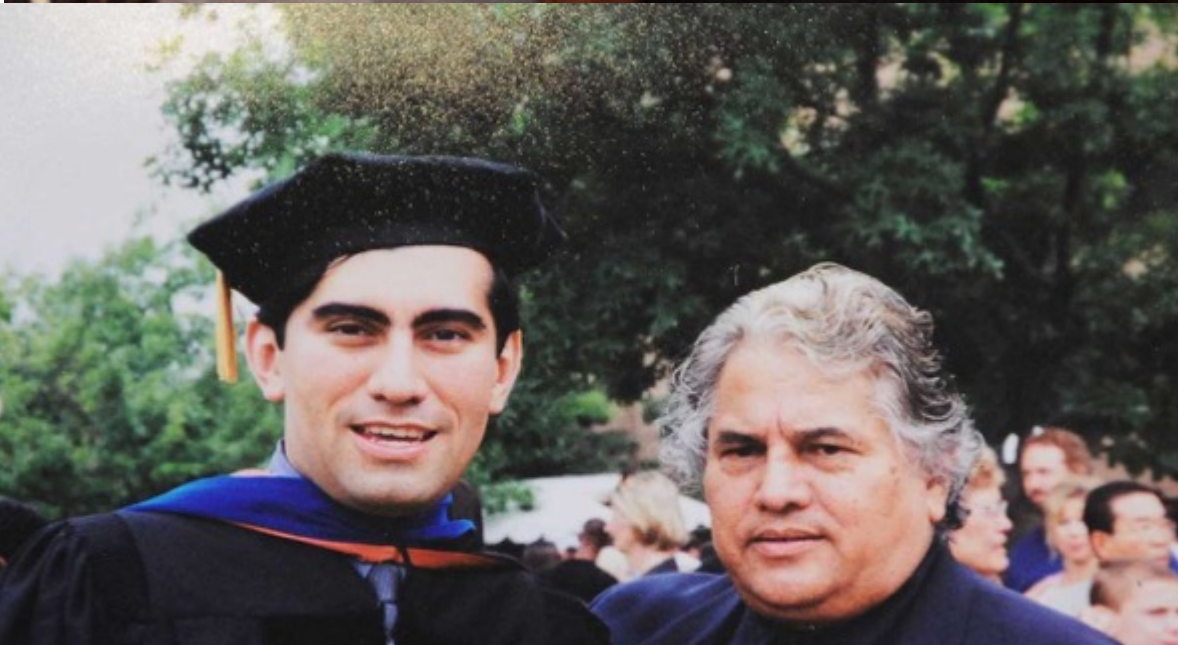
- Dr. Mike Flores



TEXAS ASSOCIATION OF CHICANOS IN
HIGHER EDUCATION









THE ASPEN INSTITUTE

**ASPEN
PRIZE**

FOR COMMUNITY
COLLEGE EXCELLENCE

TOP 10

2019

PALO ALTO COLLEGE
TOP 1% NATIONALLY
of all community colleges



ALAMO COLLEGES DISTRICT
Palo Alto College

THE ASPEN INSTITUTE

**ASPEN
PRIZE**

FOR COMMUNITY
COLLEGE EXCELLENCE

TOP 10

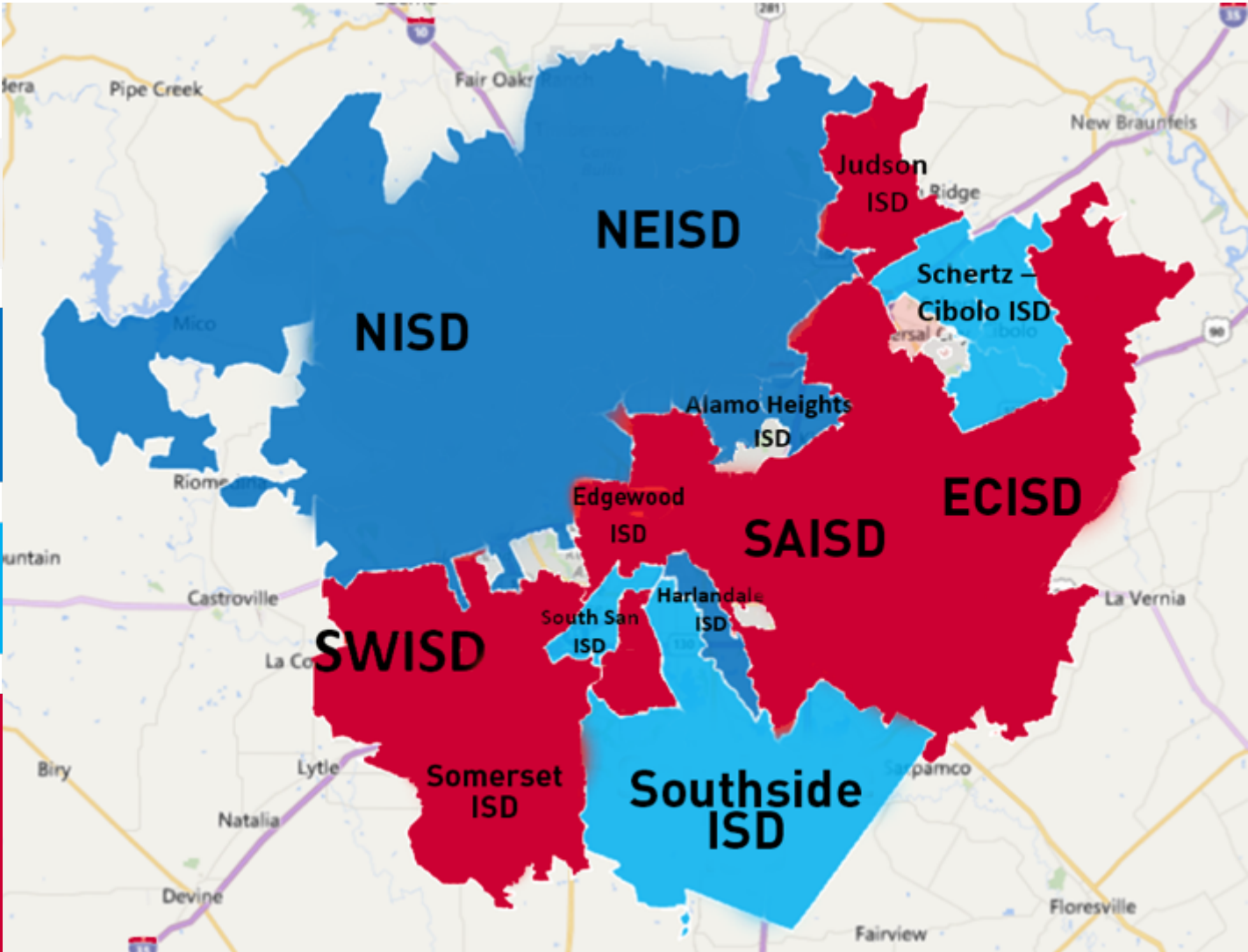
2019



College Participation Rate

Bexar County 2017 High School Graduates Enrolled in TX Colleges

District	Total High School TX Graduates	Enrolled in College	% Not Found or Trackable
ALAMO HEIGHTS ISD	411	226 (54.99%)	185 (45.01%)
NORTHSIDE ISD	6856	3511 (51.21%)	3345 (48.79%)
HARLANDALE ISD	986	502 (50.91%)	484 (49.09%)
NORTH EAST ISD	4981	2527 (50.73%)	2454 (49.27%)
SCHERTZ-CIBOLO-U CITY ISD	1247	606 (48.60%)	641 (51.40%)
SOUTHSIDE ISD	325	150 (46.15%)	175 (53.85%)
SOUTH SAN ANTONIO ISD	533	240 (45.03%)	293 (54.97%)
SAN ANTONIO ISD	2672	1125 (42.10%)	1547 (57.90%)
SOMERSET ISD	250	105 (42.00%)	145 (58.00%)
EAST CENTRAL ISD	697	284 (40.75%)	413 (59.25%)
SOUTHWEST ISD	855	346 (40.47%)	509 (59.53%)
JUDSON ISD	1343	539 (40.13%)	804 (59.87%)
EDGEWOOD ISD	591	210 (35.53%)	381 (64.47%)



Source: THECB: High School Graduates Enrolled in Higher Education the Following Fall

Student Profile

62% Hispanic

8% African-American

24% White

3% Asian

3% Other



19% Full-Time

81% Part-Time



57% Female
43% Male

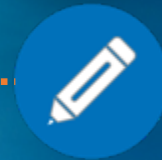


70%+

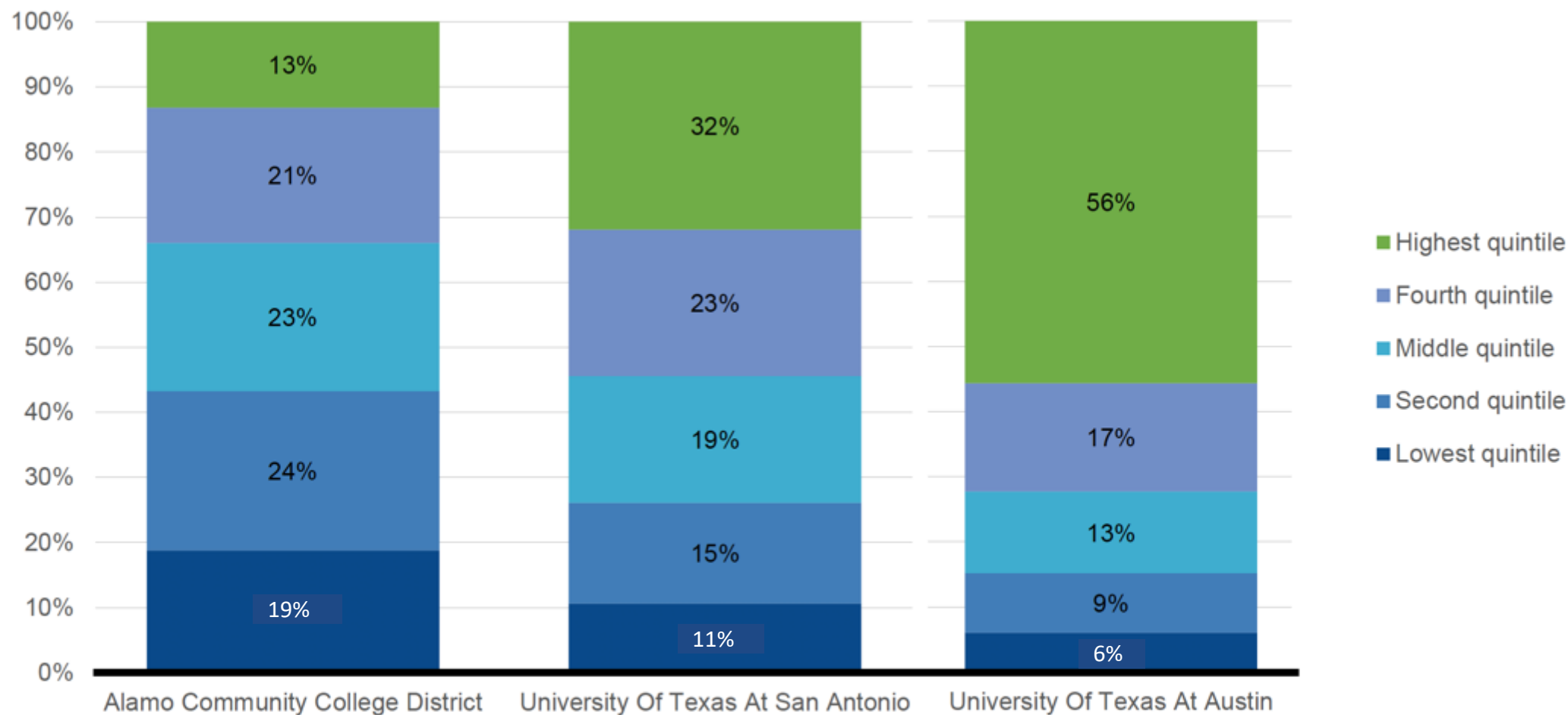
Receive Financial Aid

62%

Underprepared Students



Economic Diversity Profile



Source: Friedman, Saez, Turner, and Yagan (2017), "Mobility Report Cards: The Role of Colleges in Intergenerational Mobility."
Table 3. Note: these are figures for the 1991 birth cohort.

BROOKINGS

Strategies for Results



Increasing Access

Removing Barriers

**Enhancing Student
Experience**

**Aligning to High-Wage,
High-Demand
Careers**



OUR MOONSHOT

Partnering to end poverty
through Education
in the Greater
San Antonio
region.

A photograph of two men in a workshop setting. They are both wearing white hard hats and are focused on a large blue electronic device, possibly a circuit board or a piece of machinery. The man on the left is wearing glasses and has a beard. The man on the right is looking intently at the device. In the background, there are wooden shelves with various tools and equipment, including a black power supply unit and some wiring.

\$9,400

The average associate degree graduate from the Alamo Colleges will see an increase in earnings of \$9,400 each year compared to someone with a high school diploma working in Texas.

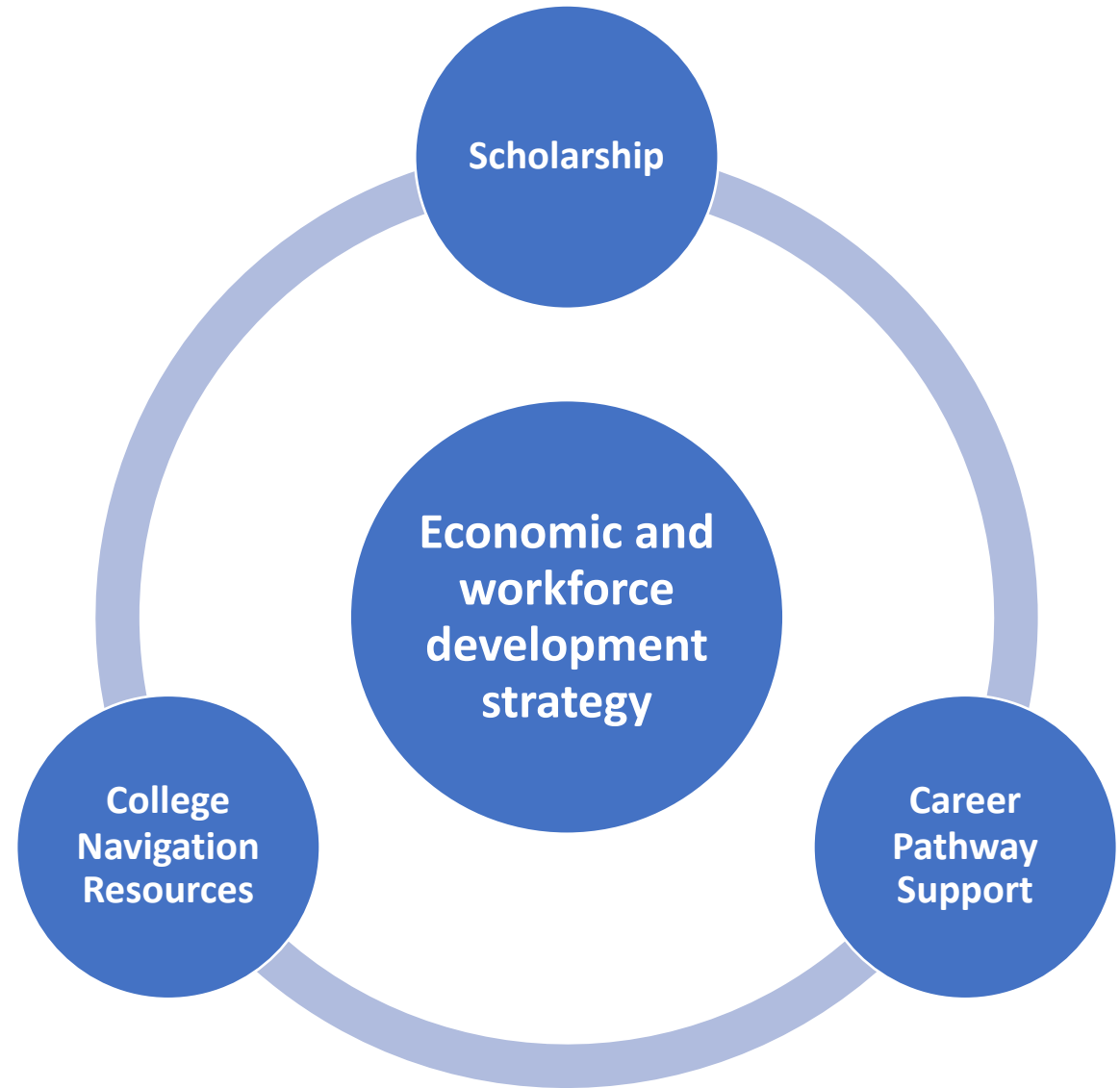


AlamoPROMISE

TUITION FREE COLLEGE FOR
ALL HIGH SCHOOL SENIORS

What Is AlamoPROMISE?

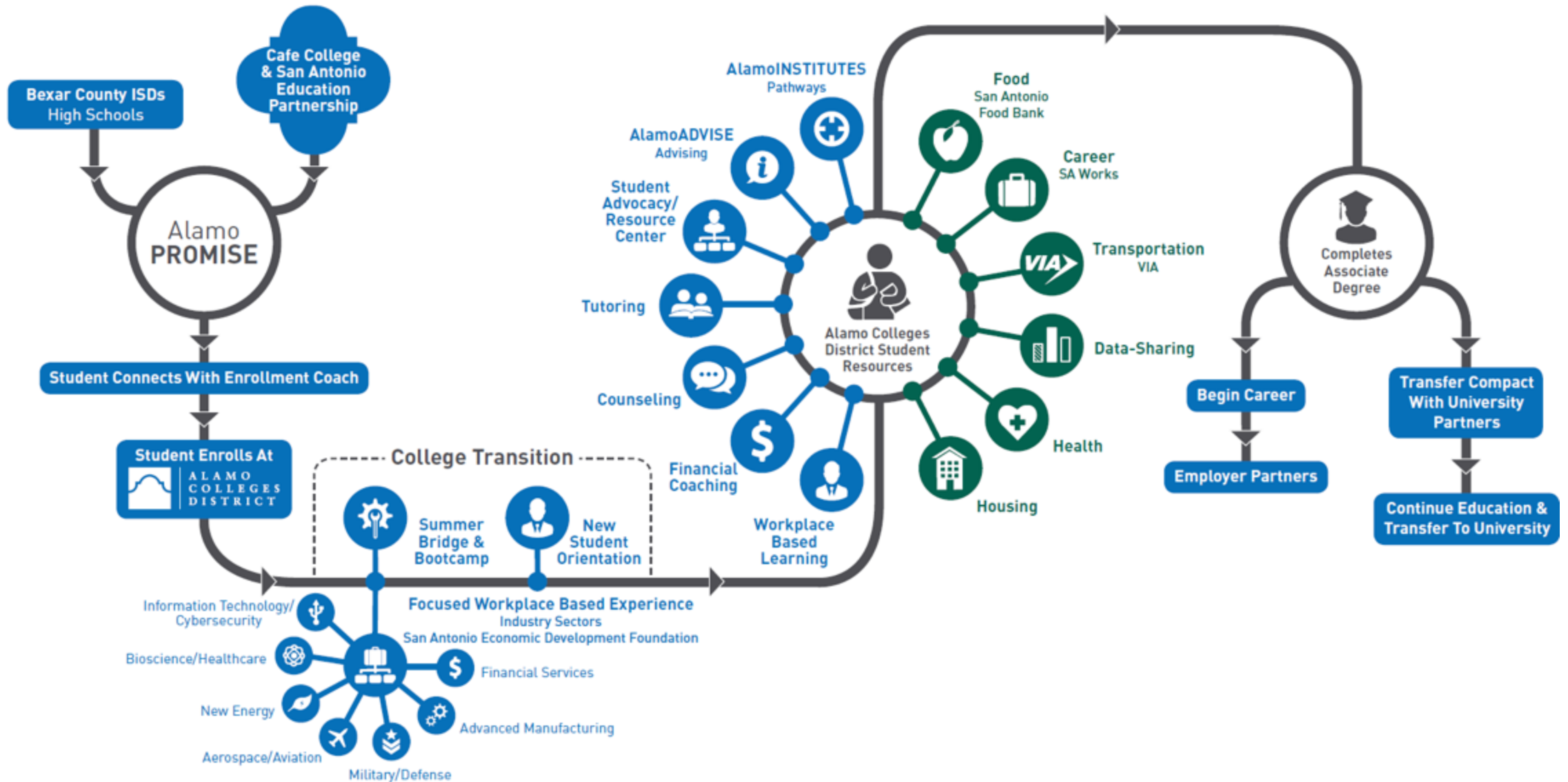
- The promise of the first two years of college for eligible students seeking associate degrees, transfer, certifications, and/or job training
- Scholarship enhanced with college navigation and career pathway support



What Are Proposed Key Elements Of AlamoPROMISE?

- The promise to students – AlamoPROMISE Scholars – is up to 60 semester credits hours, plus comprehensive student support and career resources
- Last-dollar scholarship to cover remaining costs after financial aid enhanced with college navigation and career pathway support for all eligible Bexar County high school seniors
- Students must meet eligibility criteria, pledge, apply, and enroll:
 - Participate in summer boot camp and workplace based experience (high wage, high demand emphasis)
 - Consideration of community service and/or experiential learning hours requirement
 - Maintain a 2.0 GPA and complete at least 18 credit hours per academic year

The AlamoPROMISE Network Strategy



Questions?

