

Northwest Vista College Community Health Advisory Board Membership 2022

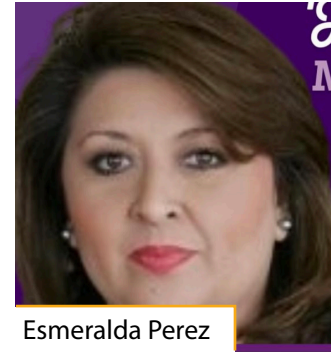


ALAMO COLLEGES DISTRICT
Northwest Vista College

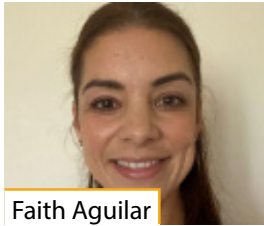
CHW ADVISORY BOARD MEMBERS 2022



Vicki Hernandez



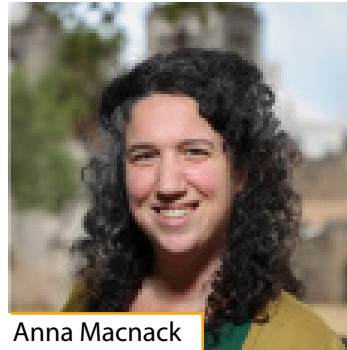
Esmeralda Perez



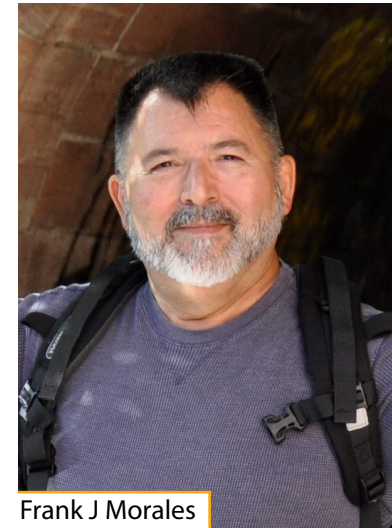
Faith Aguilar



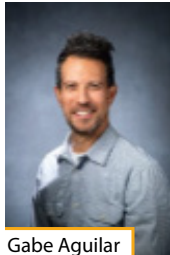
Patricia Chelela



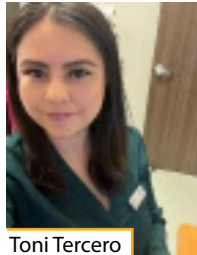
Anna Macnack



Frank J Morales



Gabe Aguilar



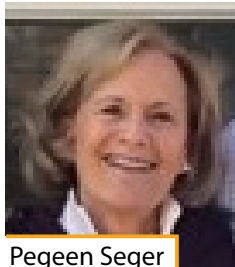
Toni Tercero



Paula Winkler



Carla Thomas



Pegeen Seger



CHW Advisory Board Members

Organization	Contact Information
City of San Antonio, Metro Health	Gabe Aguilar Program Manager, Access to Care/CHW Hub
UTHSC Medical Library	Pegeen Seger Associate Director of Outreach and Community Engagement
Planned Parenthood	Tonie M. Tercero Patient Advocate
UTHSCSA-Institute for Health Promotion Research	Dr. Patricia Chalela Associate Professor, IPHR, UTHSCSA
San Antonio Metropolitan Ministries (SAMB)	Vicki Hernandez Coordinator, Quality Assurance
South Central Area Health Education Center	Paula Winkler, Director, AHEC, UTHSCSA
City of San Antonio, Metro Health	Anna Macnack Program Coordinator, Healthy Neighborhoods
TX HHS SA SSLC	Carla Thomas SAC, Quality Assurance Coordinator
Oscar Health Insurance	Faith Aguilar, RN Patient Advocate
Christus Health Care	Esmeralda "Mela" Perez Director, Community Services Community Health Department
CentroMed	Frank J Morales Health Insurance Enrollment Specialist/Advocate

