

---

San Antonio College

---

# **1998-1999 FACT BOOK**

---

Prepared by Institutional Research  
and Effectiveness

REVISED EDITION

SEPTEMBER 1999

---

## SAC FACT BOOK CONTENTS

Introduction .....	v
Acknowledgements.....	vi
<b>COLLEGE PROFILE .....</b>	<b>1</b>
<b>OVERVIEW</b>	
History .....	2
Mission Statement.....	3
Outstanding Former Students .....	4
Certificate & Degree Programs by Degree Type.....	5
Accreditation and Affiliations.....	8
<b>ORGANIZATIONAL CHARTS</b>	
San Antonio College.....	9
Arts & Sciences; Occupational & Technical Education; Continuing Education & Workforce Development .....	10
Evening, Weekend & Distance Education; Student Services; Learning Resource Center.....	11
<b>DIVISIONS</b>	
Arts & Sciences.....	12
Occupational & Technical Education.....	12
Continuing Education and Workforce Development.....	12
Evening, Weekend & Distance Education.....	13
Student Services .....	13
Learning Resource Center .....	13
<b>INSTITUTIONAL RESOURCES</b>	
Instructional Technologies.....	14
Learning Resource Center .....	16
Student Learning Assistance Center.....	17
<b>TRANSFER</b>	
Tech Prep.....	19
Transfer Resource and Advisement Center.....	19
2 + 2 Agreements with Four-year Institutions .....	19
<b>STUDENT PROFILE .....</b>	<b>20</b>
<b>GENERAL INFORMATION</b>	
Gender, Ethnicity, Age, Major, Hours Enrolled, Day vs. Evening.....	21
Top Ten:	
Academic Majors.....	22
Vocational Majors.....	22
Feeder High Schools .....	22
Zip Codes of Residence .....	23
Counties of Residence .....	23
States of Residence .....	23
Student Objective in Attending San Antonio College .....	24
Intended Duration of Enrollment.....	24
Previous College Experience .....	24
Student Employment Status.....	24
Financial Aid and Scholarship Awards .....	25

**ACADEMIC ACHIEVEMENT**

Grade Distribution, Fall 1998.....	26
Grade Distribution Trends, Fall Semesters 1994-1998.....	26
Fall to Fall Retention by Ethnicity, 1991-1992 to 1996-1997 .....	27
Retention of First-Time, Full-Time Freshmen by Ethnicity, Fall 1997 .....	27
Graduation Degrees & Certificates Awarded, 1997-1998.....	28
Graduation Degrees by Ethnicity, 1997-1998.....	28
Graduation Degrees & Certificates Awarded, 1993-1994 to 1997-1998 .....	28
TASP Results by Institution, 1997-1998 .....	29
TASP Pass Rates by Ethnicity, 1997-1998 .....	29
ACT Average Scores, 1997-1998 .....	29

**ENROLLMENT TRENDS..... 30**

Credit Programs:

Fall Semesters 1989-1998 and Spring Semesters 1990-1999.....	31
Summer I Session 1990- 1999 & Summer II Sessions 1990-1998 .....	32
By Classification Fall Semesters 1994-1998 (Summary Statistics) .....	33
By Gender .....	34
By Ethnicity.....	34
By Division.....	35
Part-Time vs. Full-Time .....	35
Day vs. Evening.....	36
By Residency .....	36
By Age.....	37
First-Time Students .....	37
Contact Hours, Fall & Spring Semesters 1994-1999.....	38
Contact Hours, Summers I & II 1995-1999.....	38
Off-Campus Enrollment, Fall 1996 – Spring 1999.....	39

Developmental Education:

Enrollment Fall Semesters 1994-1998 .....	40
Trends in Developmental English.....	41
Trends in Developmental Math.....	41
Trends in Developmental Reading .....	41

Continuing Education:

Highlights.....	42
Contract Training, Significant Activities.....	43
Contract Companies.....	44
Total Enrollment 1989-1990 to 1998-1999 .....	45
Tuition/Fee Revenue 1989-1990 to 1998-1999.....	45
Reimbursable Headcount by Quarter 1994-1998.....	46
Reimbursable Contact Hours by Quarter 1994-1998 .....	46
Reimbursable Classes by Quarter 1994-1998 .....	46

**PERSONNEL PROFILE ..... 47**

FACULTY

    Faculty Profile (Gender, Ethnicity, Age, Highest Degree Earned), Fall 1998 ..... 48

    Full-Time Faculty, Fall 1998 ..... 49

    Faculty Rank, Fall 1998..... 49

FULL-TIME EMPLOYEES

    Full-Time Employee Profile, Fall 1998..... 50

    By Gender & Classification, Fall 1998 ..... 50

    By Ethnicity & Classification, Fall 1998..... 50

**FINANCIAL PROFILE ..... 51**

    Tuition and Fees 1998-1999 ..... 52

    Base Revenues 1998-1999 ..... 52

    Summary of Revenue for 1998-1999 ..... 53

    Summary of Expenditures for 1998-1999 ..... 53

The San Antonio College Fact Book provides general statistical information about the College which may be useful to those engaged in planning, preparing reports, writing grant proposals, or other endeavors within the College.

It is important for the reader to be aware that data presented in this publication may differ slightly from statistics found in other College and District reports. Such variances may result from differences in the source of information used, the date on which the report was generated, or the reporting period included in the report. For these reasons, the source of the information in each table and graph is cited. Trends should be tracked using identical sources each semester.

This year we reviewed historical data, checked it against the original sources and made corrections where necessary. Therefore, some of the historical data in this edition of the Fact Book differs from the data presented in previous editions of the Fact Book. This edition represents the most accurate and consistent data sources currently available.

Emily Dibble, Ph.D., Manager  
Sonia V. Valdez, Statistical Research Specialist

Institutional Research and Effectiveness  
San Antonio College  
1300 San Pedro Avenue  
San Antonio, Texas 78212  
(210) 733-2173

ACKNOWLEDGEMENTS

Dr. Vern Loland, President, San Antonio College  
Dr. Robert Zeigler, Executive Vice President, San Antonio College  
Adolph Lopez, Assistant to the President  
Dr. Margaret Hyde, Dean of Arts and Sciences  
Betty J. Larson, Dean of Occupational and Technical Education  
Ruben Torres, Dean of Continuing Education and Workforce Development  
Ruben Flores, Dean of Evening, Weekend and Distance Education  
Dr. Alice Cook, Dean of Learning Resources  
Dr. Cecilia Gonzales, Director of Institutional Advancement  
Mary Ann Greenlees, Director of Academic Development  
Dr. John Hammond, Director of Community and Public Relations  
Helen Torres, Director of Distance Education  
Dr. Charlotte Wolf, Director of Instructional Technologies  
Tomas Campos, Director of Student Financial Services  
Rose M. Carreon, Associate Director of Student Financial Services  
Yolanda Cano, Associate Director of Residency and Reports  
Dave Elder, Coordinator of Student Learning Assistance Center  
Tim Rockey, Continuing Education and Workforce Development  
Della Savage, Records & Reports  
Terri Smith, Records & Reports  
Leopoldo Gonzalez, Tech Prep  
Espy Santos, Admissions and Records  
Rose Marie Gonzales, Transfer Center  
Danielle Hinojosa, Statistical Research Clerk  
Renelinda Arana, Statistical Research Clerk  
Sheila Fichtner, Website Graphics Specialist, Audiovisual Center  
Thomas Currie, Production Control Analyst, ACCD Information Systems  
Steve Castañeda, Texas Higher Education Coordinating Board

**CONTENTS – COLLEGE PROFILE**

**OVERVIEW**

History ..... 2  
 Mission Statement..... 3  
 Outstanding Former Students ..... 4  
 Certificate & Degree Programs by Degree Type..... 5  
 Accreditation and Affiliations..... 8

**ORGANIZATIONAL CHARTS**

San Antonio College..... 9  
 Arts & Sciences; Occupational & Technical Education; Continuing Education & Workforce Development ..... 10  
 Evening, Weekend & Distance Education; Student Services; Learning Resource Center..... 11

**DIVISIONS**

Arts & Sciences..... 12  
 Occupational & Technical Education..... 12  
 Continuing Education and Workforce Development..... 12  
 Evening, Weekend & Distance Education..... 13  
 Student Services ..... 13  
 Learning Resource Center ..... 13

**INSTITUTIONAL RESOURCES**

Instructional Technologies..... 14  
 Learning Resource Center ..... 16  
 Student Learning Assistance Center..... 17

**TRANSFER**

Tech Prep..... 19  
 Transfer Resource and Advisement Center..... 19  
 2 + 2 Agreements with Four-year Institutions ..... 19

**HISTORY**

San Antonio College was established as University Junior College in September 1925, under the auspices of the University of Texas. The following year control of the college was transferred to the San Antonio Independent School District and the name was changed to San Antonio Junior College. Following passage of state legislation authorizing junior college districts, the San Antonio Union Junior College District was formed in 1945 and in 1946 assumed control of San Antonio Junior College and its sister college, St. Philip's Junior College. In 1948, San Antonio Junior College's name was changed to San Antonio College, and in 1951, the college was moved to its present location on San Pedro Avenue. Five hundred students were enrolled at that time. The Southern Association of Colleges and Schools granted accreditation to the college in 1955.

In the late 1960's, San Antonio College became a comprehensive community college by expanding offerings in occupational and technical courses and by assuming the San Antonio Independent School District's continuing education program. The name of the college district was changed to San Antonio Community College District in 1978; and in 1982 the district was renamed the Alamo Community College District.

In support of the mission of the Alamo Community College District, San Antonio College responds to its service area's diverse population by providing high quality general education, liberal arts and sciences, career education, continuing education and developmental education. The college has an average semester enrollment of 21,000 credit students and an average annual enrollment of 15,000 other-than-credit students. San Antonio College is the largest single-campus community college in Texas and one of the largest in the United States.



## MISSION STATEMENT

**San Antonio College – responsive education through excellence, accessibility and diversity.** San Antonio College is a public community college which provides for and supports the educational and lifelong learning needs of a multicultural community. As a leader in education, San Antonio College is committed to excellence in helping students reach their full potential by developing their academic competencies, critical thinking skills, communication proficiency, civic responsibility and global awareness.

San Antonio College fulfills its mission by offering the following:

- ❖ Transfer education designed to provide students with the first two years of the bachelor's degree.
- ❖ General education courses in the liberal arts and sciences to support all college degree programs.
- ❖ Career preparation provided through a wide range of programs to prepare students for immediate employment.
- ❖ Developmental studies for students needing to bring their basic skills to a level appropriate for college work.
- ❖ Continuing education to offer a variety of training, licensure and professional programs.
- ❖ Academic support services that include a comprehensive learning resource center and basic skills activities that complement instruction.
- ❖ Student support services to provide assessment, advising, counseling, tutoring, financial assistance, and social and cultural activities for all students, including those with special needs.
- ❖ Promotion of cross-cultural understanding and appreciation through instructional and social activities that contribute to cultural awareness and interaction.
- ❖ Involvement of business, industry and professional groups in planning and revising educational programs to meet workforce needs.
- ❖ An environment conducive to learning through an attractive physical campus and wellness-oriented programs and services.
- ❖ Continuous assessment of programs and services and the utilization of results for improvement.
- ❖ Operation of the college within available fiscal resources to provide accountability to taxpayers of the Alamo Community College District.

## OUTSTANDING FORMER STUDENTS

Congressman Henry B. Gonzalez.....	1982
Judge Blair Reeves.....	1983
Congressman Albert Bustamante.....	1984
Dr. William Kirby (Former Commissioner Of Education).....	1985
Capt. Larry Person (Navy Test Pilot, Former Blue Angels Commander).....	1986
Lisa Brown (Archaeologist).....	1987-88
Judge Edward Prado.....	1987-88
Dr. Jerome Weynand (Former Executive Director Baumberger Endowment Fund).....	1987-88
James R. Vasquez (Former Edgewood School District Superintendent).....	1988-89
Judge Sarah Garrahan.....	1988-89
Frank Gonzalez (Oceanographer).....	1989-90
Nancy Klepper (Educator).....	1989-90
Diane Gonzales (Journalist).....	1990-91
Bill Hayden (Founder/CEO Compuadd).....	1990-91
Jesse Trevino (Artist).....	1991-92
Patsy Torres (Entertainer).....	1992-93
Dr. Felix D. Almaraz (Columnist And Historian).....	1993-94
William Sinkin (Banker).....	1993-94
Dr. Judith Ann Loreda (Educator).....	1994-95
Steven C. Hilbig (Bexar County District Attorney).....	1994-95
Dr. Robert L. Jimenez (Psychiatrist).....	1995-96
Dr. Leo Sayavedra (Educator).....	1995-96
Francis R. Scobee (Challenger Astronaut).....	1995-96
Tino Duran (Publisher).....	1996-97
Al A. Philippus (San Antonio Chief Of Police).....	1996-97
Dr. Cynthia Gambell Broderick (Educator).....	1997-98
Dr. Jesse T. Zapata (Educator).....	1997-98
Dr. James V. McLean (Veterinarian).....	1998-99
Marinella Garcia-Murillo (Community Relations Specialist).....	1998-99

## CERTIFICATE AND DEGREE PROGRAMS

### ARTS & SCIENCES

AA DEGREES: ASSOCIATE IN ARTS IN LIBERAL ARTS  
 ASSOCIATE IN ARTS IN CHILD DEVELOPMENT  
 ASSOCIATE IN ARTS IN CRIMINAL JUSTICE  
 ASSOCIATE IN ARTS IN GEOGRAPHIC INFORMATION SYSTEMS  
 ASSOCIATE IN ARTS IN PSYCHOLOGY  
 ASSOCIATE IN ARTS IN SOCIAL SERVICES

AS DEGREES: ASSOCIATE IN SCIENCE  
 ASSOCIATE IN SCIENCE IN PRE-MEDICAL/PRE-DENTAL

#### DISCIPLINES:

Accounting	Geographic Information Systems
Architecture	Geography
Art	Geology
Astronomy	Government
Biological Sciences	Graphic Art
Business Administration	History
Chemistry	Humanities
Computer Science	Interdisciplinary Studies
Drama	Journalism
Economics	Kinesiology/Physical Education
Education	Mathematics
Engineering	Mental Health Technology
English	Music
English as a Second Language	Philosophy
Foreign Languages	Photography
American Sign Language	Physics
French	Psychology
German	Reading/Study Skills
Japanese	Social Work
Latin	Sociology
Spanish	Speech

## CERTIFICATE AND DEGREE PROGRAMS

### OCCUPATIONAL TECHNICAL

DEPARTMENT	PROGRAM	AWARD
ALLIED HEALTH	Dental Assisting Technology	AAS, CERT
	Medical Assisting Technology	AAS, CERT
	Medical Office Adm. Assistant	CERT
	Mortuary Science	AAS
CHILD DEVELOPMENT	Child Development	AAS, CERT
	Teacher Assistant	CERT
COMPUTER INFORMATION SYSTEMS TECHNOLOGY	Office Microcomputer Technician	CERT
	Computer Help Desk Specialist	AAS
	Computer Help Desk Technician	CERT
	Computer Information System	AAS
	Computer Programming	AAS
	Computer Programmer	CERT
	Microcomputer Specialist	AAS
	Network Administrator	AAS
	Network Technician	CERT
OFFICE SYSTEMS TECH./ COURT REPORTING	Accounting Technology	AAS, CERT
	Court Reporting	CERT
	Court Reporting Computer-Aided Transcription	AAS
	Court Reporting – Rapid Text Entry	CERT
	Information Systems Support (Help Desk)	AAS, CERT
	Microcomputer/Data Entry Operations	CERT
	Office Assistant	CERT
	Office Sys. Specialist	AAS
	Office Systems Technician	CERT
	Office System Technology	AAS, CERT
Records Management	AAS, CERT	
ENGINEERING TECHNOLOGY	Civil Engineering	AAS
	Computer-Aided Drafting Operations	CERT
	Computer-Aided Drafting & Design	CERT
	Drafting	AAS
	Computer-Aided Drafting-Engineering	AAS
	Electronics Technology	CERT
	Electronics Tech-Communications	AAS
	Electronics Tech-Computer	AAS
	Engineering Technology	AAS
	Facilities Management	AAS
	Geographic Info Systems	CERT
	Safety Engineering Tech	AAS
	Surveying	AAS, CERT

DEPARTMENT	PROGRAM	AWARD
INTERPRETER TRAINING/AMERICAN SIGN LANGUAGE	Interpreting for the Deaf	AAS
MANAGEMENT	Banking	AAS
	Financial Management	AAS, CERT
	Labor Studies	CERT
	Legal Assisting	AAS
	Management	AAS, CERT
	Operations Management	AAS, CERT
	Public Administration	AAS
	Real Estate Management	AAS, CERT
	Small Business	CERT
RADIO-TV-FILM		AAS
NURSING		AAS
PROTECTIVE SERVICES	Criminal Justice-Correctional Science	AAS, CERT
	Criminal Justice-Law Enforcement	AAS, CERT
	Fire Fighter (Basic)	CERT
	Fire Science	AAS
	Fire and Arson Investigation	AAS, CERT
	Fire Inspector	CERT
PSYCHOLOGY	Mental Health Technology	AAS, CERT
	Mental Health Technology-Substance Abuse Drug & Alcohol Couns. Cert. Prep.	AAS CERT
VISUAL ARTS	Graphic Arts-Electronic Graphics Option	AAS
	Graphic Arts-Print Graphics Option	AAS

**ACCREDITATION & AFFILIATIONS**

San Antonio College is accredited by the Commission on Colleges of the Southern Association of Colleges and Schools to award associate degrees.

The Mortuary Science Program is accredited by the American Board of Funeral Service Education.

The program in Dental Assisting is accredited by the Commission on Dental Accreditation of the American Dental Association, a specialized accrediting body recognized by the Council on Postsecondary Accreditation and by the United States Department of Education.

The Medical Assisting Technology Program is accredited by the Commission on Accreditation of Allied Health Education programs (CAAHEP), on recommendation of the Committee on Accreditation for Medical Assistant Education.

The Department of Nursing is accredited by the National League for Nursing.

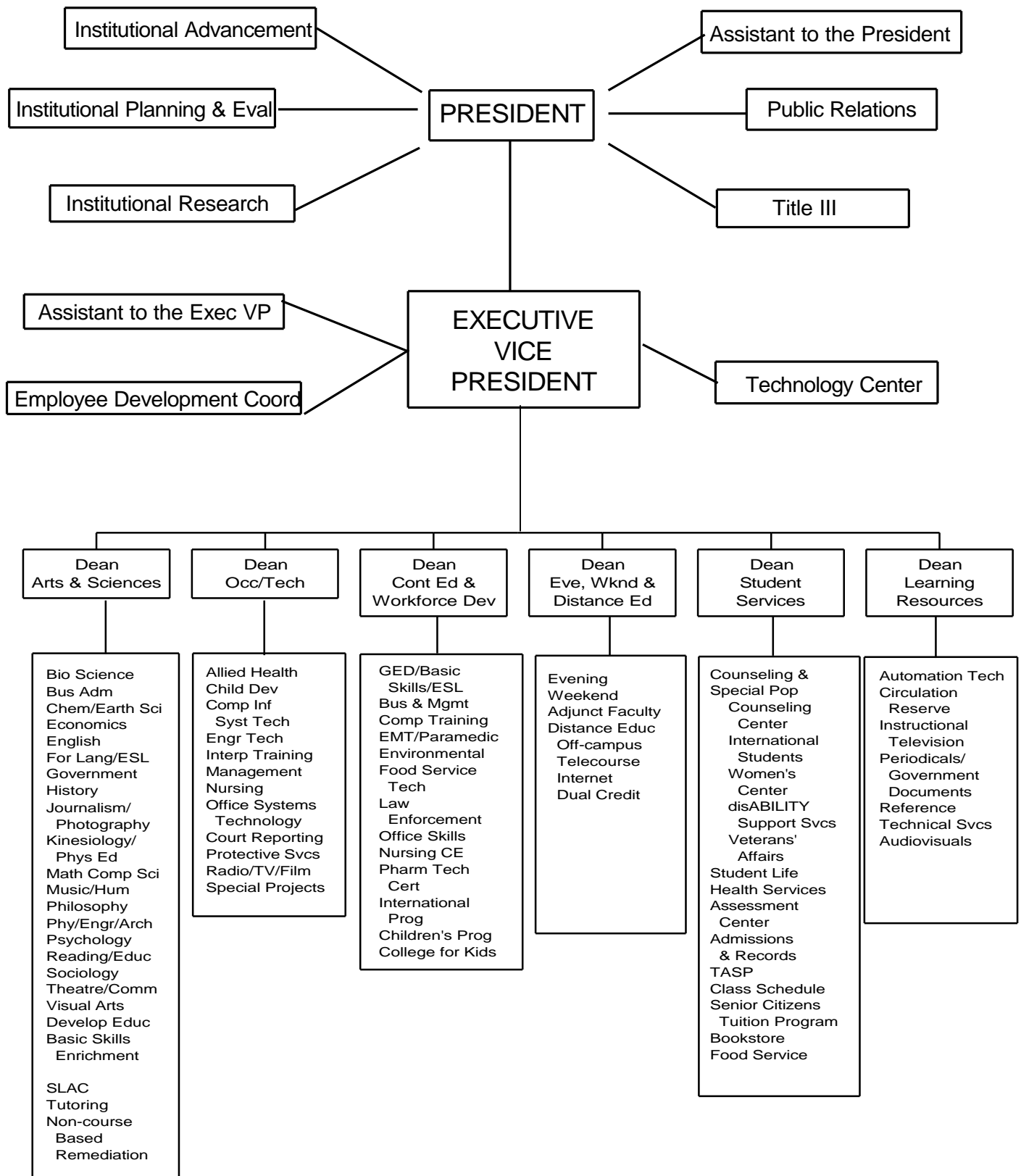
The Child Development Program is accredited by the National Association for the Education of Young Children (NAEYC) and the Council for Early Childhood Professional Recognition.

The Fire Science Program is the first program to be accredited by the International Fire Service Accreditation Congress.

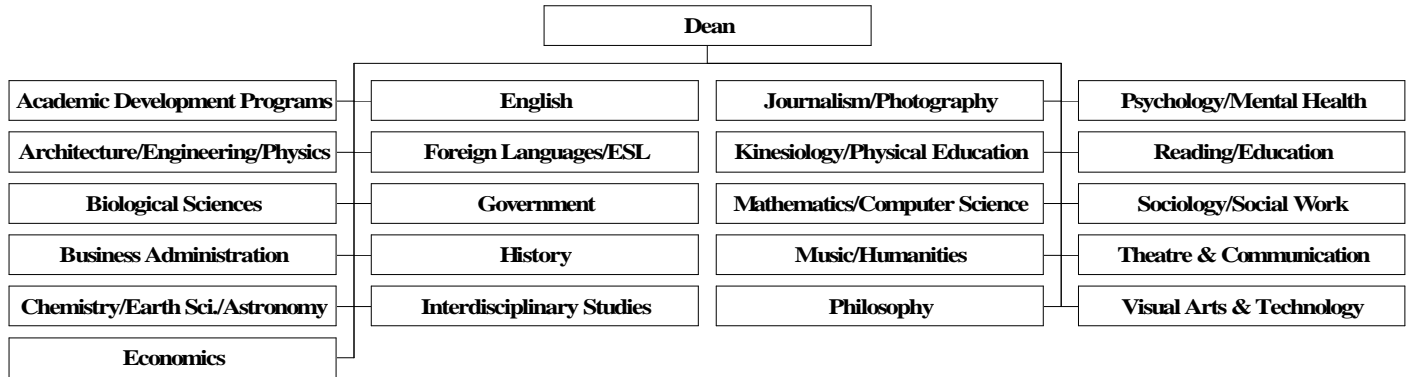
The college is also an active member of the American Association of Community Colleges, the Community College Consortium, Association of Texas Colleges and Universities, the National League for Nursing, the Southern Association of Junior Colleges, the Texas Junior College Association, the Texas Public Community and Junior College Association, Texas Educational Theatre Association and the Texas Association of Music Schools.

Students who wish to view the school's accreditation and licensing bodies documentation may inquire at the reserve desk of the Learning Resource Center in the Moody Learning Center.

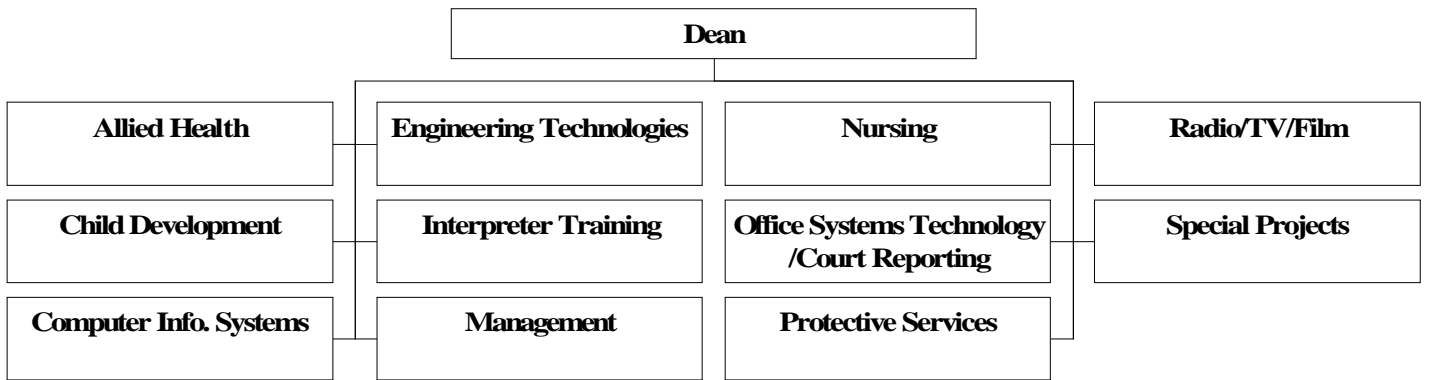
SAN ANTONIO COLLEGE 1998-1999 ORGANIZATIONAL CHART



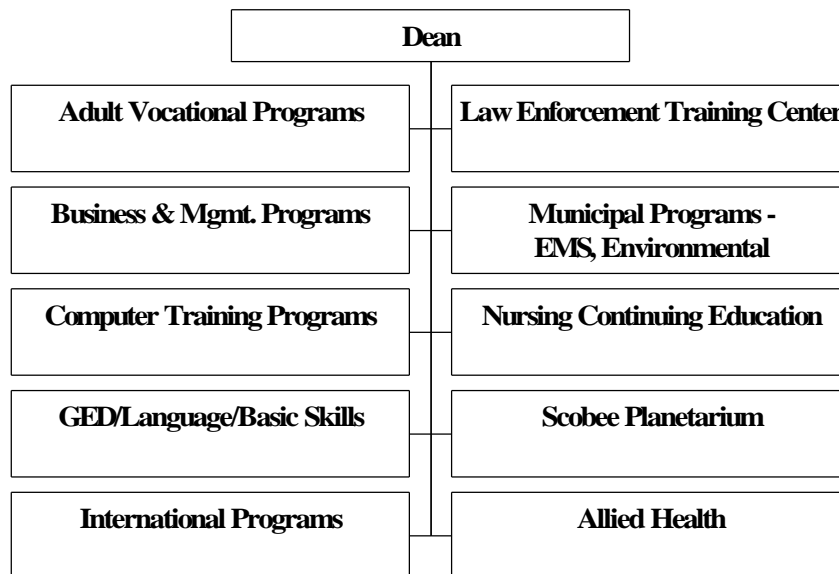
### ARTS & SCIENCES DIVISION



### OCCUPATIONAL & TECHNICAL EDUCATION

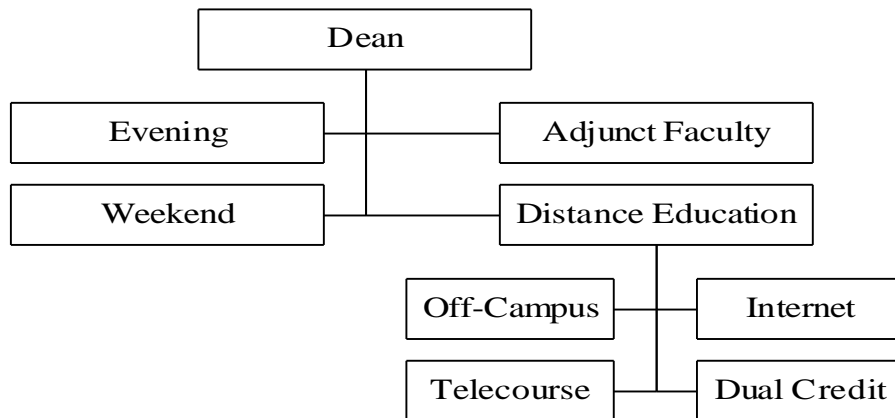


### CONTINUING EDUCATION AND WORKFORCE DEVELOPMENT

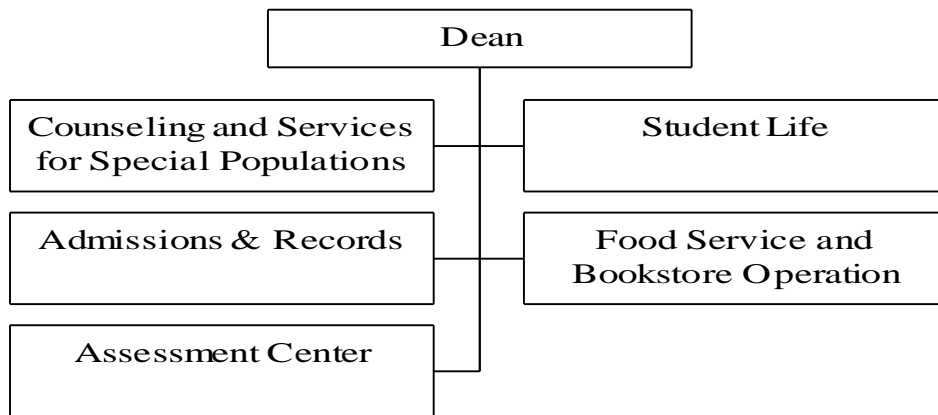




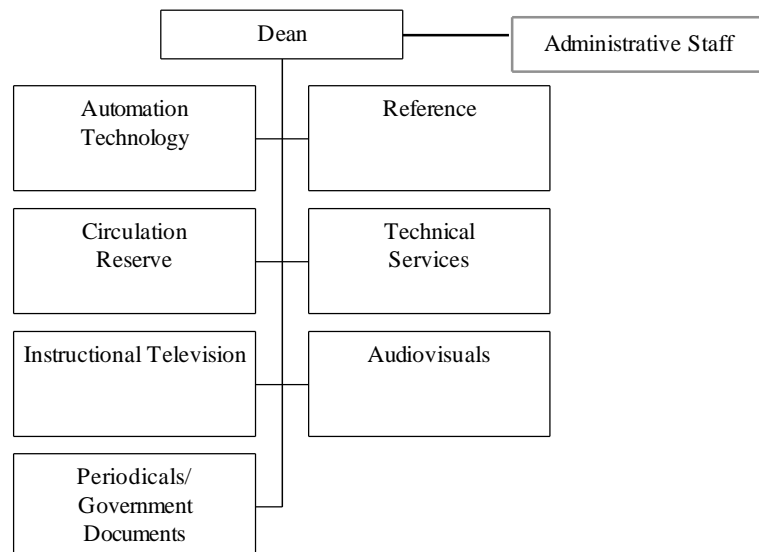
### EVENING, WEEKEND & DISTANCE EDUCATION



### STUDENT SERVICES



### LEARNING RESOURCE CENTER



## DIVISIONS

### Arts and Sciences

San Antonio College offers a comprehensive Liberal Arts Curriculum designed to satisfy the requirements of the first two years of a baccalaureate degree. These general and transfer Arts and Science courses are offered by the following areas: Biological Sciences, Business Administration, Chemistry, Earth Sciences, Economics, English, Foreign Languages, Government, History, Journalism, Photography, Math, Computer Science, Music, Humanities, Philosophy, Physical Education, Physics, Engineering, Architecture, Psychology, Reading, Education, Sociology, Social Work, Theatre, Communications, and Visual Arts and Technology.

### Occupational and Technical Education

Programs are provided for purposes of job or career entry; career development and change; industry/business start-up and development; transfer to four-year degree programs; and technical services to industry. All of the programs are linked with the employing community through active advisory committees, cooperative or part-time work experience, direct placement and career development activities, as well as the sharing of work-site laboratories and equipment.

San Antonio College offers local certificates, level one certificates, advanced certificates and Associate in Applied Science degrees in Accounting Technology, Banking, Court Reporting, Child Development, Child Care Administration, Computer-Aided Transcription, Computer Help Desk Specialist, Computer Programming, Criminal Justice – Corrections and Law Enforcement, Electronics Technology, Dental Assisting Technology, Computer-Aided Drafting and Design Technology, Engineering Technology, Financial Management, Fire Science, Graphic Arts, Interpreting for the Deaf, Legal Assisting, Labor Studies, Management, Medical Assisting Technology, Mental Health Technology, Microcomputer Data Entry, Microcomputer Specialist, Mortuary Science, Network Administrator, Nursing, Office Systems Specialist, Office Assistant Computer Operations, Operations Management, Public Administration, Radio-Television-Film Technology, Real Estate, Records Management, Safety Engineering Technology, Teacher Assistant, Facilities Management, Geographic Information Systems and Surveying.

### Continuing Education and Workforce Development

Continuing Education provides nontraditional educational opportunities to meet the needs of students and employers in the San Antonio area.

Occupational and technical short courses are offered for business, industry, government and professional groups; seminars and workshops are developed to complement and supplement in-house training and staff development programs. These non-traditional courses are developed in collaboration with college faculty and community experts. Other-than-credit courses and activities are offered on campus and throughout the community with dates and times arranged for the convenience of the students. Continuing Education assists departments and divisions by serving as an outreach mechanism for channeling interested students into appropriate credit programs within the college.

Certification programs are offered for managers, secretaries, law enforcement officers, private security guards, emergency medical technicians, firefighters, real estate agents, insurance agents, executive housekeepers and health care personnel. Community service programs include conversational languages, personal development and life skills courses, summer courses for children and planetarium programs for the general public. Parallel and integrated programs include classes in General Education Development (GED) and English as a Second Language skills.

The International Students Office (ISO) serves primarily as official liaison between San Antonio College and the U. S. Immigration and Naturalization Service (INS) for approximately 230 students from 50 countries in Central and South America, Europe, Africa, the Middle East, Asia and South East Asia. The ISO assists prospective international students with applications for admission, registration, medical insurance, etc. Enrolled students are helped to take advantage of INS benefits while maintaining their legal status from the point of College admission to the point of transfer to another institution or return to their home country. This unit is dedicated to helping our international students succeed while enrolled at San Antonio College. Every effort is made to ensure the students return home with memories of a pleasant experience in the United States.

## Evening, Weekend and Distance Education

Evening course offerings include regular academic courses leading to college degrees and certificate programs, developmental education courses, and other courses planned to be of community service and vocational interest to adults. Courses are offered if there is sufficient demand. Late afternoon, evening, weekend classes and distance education classes (off-campus courses and telecourse/internet/interactive courses) are scheduled for the convenience of students.

### Distance Education

The Distance Education Office at San Antonio College provides information on course offerings, assessment and off-campus registration to students interested in taking college credit courses or developmental education courses off-campus. Distance Education offers SAC courses in area high schools, military bases, USAA, Citicorp, and the cities of Seguin, New Braunfels and Kerrville.

Dual Credit courses are offered to high school juniors and seniors who earn high school and college credit. School districts enter cooperative agreements with San Antonio College before dual credit classes are offered at a high school. Distance Education also provides course and schedule information on telecourses and Internet courses.

## Student Services

Student Services are provided by Admissions and Records, Counseling, Health Services, Women's Center, disABILITY Support Services, Veterans Affairs, Tutoring Services, Special Services, Student Support Services Project, Job Placement and Follow-Up, Assessment Center, International Student Services, Student Development Program and Student Life. Student Life includes student organizations, student government, special event programming and recreational sports, such as intramurals and extramural club teams.

## Learning Resource Center

The Learning Resource Center is a vital technologically advanced center of learning and exploration for students, staff, faculty and the community. Supplementing the book collection of 200,000 titles are 60,000 federal documents, 1,000 current periodical subscriptions, 65,000 microforms, 5,000 pamphlets, and 3,500 videotapes.

Informational resources owned by the library are listed in an online catalog. Additional resources are accessible through the Internet/World Wide Web. Subject databases, such as Cumulative Index to Nursing (CINAHL), are featured on a Local Area Network (LAN).

**INSTITUTIONAL RESOURCES****Instructional Technologies:**

The **Department of Instructional Technologies** was established to coordinate technological initiatives at San Antonio College. It functions in conjunction with the College Technology Committee to provide the technical expertise necessary to implement the College Technology Plan. The Department provides an official location to centralize information related to campus technical support and training for all academic and administrative units. It coordinates Campus activities with other organizations in the Alamo Community College District. The department includes the Technology Center, Help Desk, Instructional Innovation Center, and Technology Training Program.

**Technology Center:**

The **Technology Center** provides coordination, installation, and maintenance of campus computer systems and it provides technical support to all academic and administrative units. The Technology Center provides multimedia presentation units for classroom instruction, recommendations for purchasing, equipment setup, installation of hardware and software, implementation of off-campus connectivity, and assists other departments with planning.

The San Antonio College **Help Desk** functions as part of the Technology Center in order to provide immediate telephone assistance and trouble shooting for faculty, staff, and students. The Help Desk also develops and provides tutorials to assist the Internet Students. During the 1998-99 academic year, the Technology Center completed 1,123 service requests and served 75 departments.

**Instructional Innovation Center:**

The **Instructional Innovation Center** was established to provide training and assistance for faculty who want to enhance their instruction with new or innovative teaching techniques and technology. The Center provides a place for faculty to work with state-of-the-art equipment and software as well as obtain assistance and training with innovations such as, classroom presentations using computers and multimedia, computer-assisted instruction, infusion of the Internet and the World Wide Web into classroom assignments, video conferencing, and other techniques to improve learning and instruction. A certification program is provided for instructors, who develop courses to be taught fully over the Internet.

The **Technology Training Program** is provided in the Instructional Innovation Center for the faculty, staff, and administration of San Antonio College. This program was designed to assist with the achievement of certain college goals and to increase efficiency and effectiveness through the infusion of technology into the college classroom and office setting.

The following equipment is available for faculty and staff use in the Instructional Innovation Center: Pentium PC and Macintosh computers, with access to the Internet, E-mail, Advantage Financial Systems, and Student Information Systems. Additional equipment includes color laser and ink jet printers, image and text scanners, laser disk player, CD-ROM recorders, motion video capture card, microphones, LCD projectors, zip drives, digital cameras, VCR-TV, DVD drives, and videoconferencing equipment.

## Instructional Innovation Center:

During the 1998-99 academic year the Instructional Innovation Center served 4,531 faculty, staff, and visitors on a walk in basis and conducted a total of 451 classes through the Technology Training Program. Training was provided on the following:

### Multimedia and Presentations:

Microsoft PowerPoint, GoldDisk Astound, Macromedia Authorware, Adobe Premier Video Capture and Editing, Digital Media Techniques, Rolling Multimedia Site Administrator, Rolling Multimedia User

### Design and Graphics:

Adobe PhotoShop, Adobe PageMaker, Corel Draw, PhotoPaint, Grypho Morph, Flash III, Adobe Illustrator, OmniForm, Paintshop Pro, Scanning Images and Text

### General Computer Operations and Applications:

Microsoft Excel, Microsoft Word, Microsoft Access, Microsoft Outlook, Corel WordPerfect, Windows 95, Windows NT, Basic Computer Operations, Computer File Management and Organization

### Internet and World Wide Web Design:

Netscape Communicator Composer, Corel Web Designer, DiDa, HotDog, Macromedia Dreamweaver, PageMill, FrontPage, Homesite, Gif Animator, Active Server Pages, Surfing the Web, Eudora E-mail, Preparing Graphics for the Web, Electronic Communications, Web Page Counter, HTML Coding and Editing, Instant Web Page Design, Organizing Web Bookmarks, Streaming Motion Video for the Web

### Teaching Strategies and Research:

Classroom Research Design, Critical Thinking, Exploring Daedalus, Introduction to Teaching on the Internet, Teaching Skills for the Internet, Systems Issues Related to Teaching on the Internet

### Video Training:

Video series on: How to Handle Difficult People, How to Supervise People, and Critical Thinking

## Learning Resource Center

The Learning Resource Center is equipped with two state-of-the art classrooms where librarians teach students search strategies and techniques for finding relevant information using online databases or using traditional sources. An audiovisual center supports classroom instruction through its graphic, photographic and audio production facilities. The Instructional Television Center provides a contemporary studio and the means to broadcast telecourses directly to students' homes.

**LEARNING RESOURCE CENTER SERVICES 1988-89 TO 1997-98**

CATEGORY/SERVICE	88-89	89-90	90-91	91-92	92-93	93-94	94-95	95-96	96-97	97-98
Collections – All items	376,176	380,421	371,084	365,550	361,186	366,946	316,468	375,394	247,448	250,004
Materials Processed (#)	---	---	---	8,538	9,651	13,683	11,265	15,977	12,641	6,118
LIBRARY ATTENDANCE										
User Headcount for 2 <sup>nd</sup> & 3 <sup>rd</sup> Floors Only	---	---	443,175	416,205	366,717	366,059	373,482	352,000	377,788	333,017
LIBRARY INSTRUCTION										
Group Instruction Sessions	303	304	333	347	377	434	478	503	549	548
Students Taught in GIS Sessions	8,863	10,129	9,345	9,429	10,514	11,873	12,180	12,272	12,324	11,371
Reference Questions	---	---	---	---	31,008	34,880	44,256	44,960	39,552	35,201
Directional Questions	---	---	---	---	23,264	19,840	23,856	23,584	22,176	19,950
BOOK COLLECTION										
Book Circulation	62,375	62,330	58,729	53,095	56,318	68,757	56,839	56,238	52,872	82,909
In-Library Use of Books	78,698	80,104	75,253	88,137	86,189	64,408	59,692	37,017	87,931	111,952
Interlibrary Loans	3,799	4,378	3,659	4,512	4,636	6,492	8,211	8,736	7,152	7,098
PERIODICALS COLLECTION										
Periodical Circulation	60,835	112,728	81,108	76,464	62,717	61,424	68,591	61,834	54,893	39,355
AUDIOVISUAL COLLECTION										
AV Equipment Circulation	9,306	12,733	13,758	17,518	19,120	22,144	14,081	13,950	10,453	8,507
In-Library/ACCD Use of AV materials & Equipment	---	---	---	---	18,350	26,263	19,799	33,070	32,958	23,326
INSTRUCTIONAL TELEVISION										
Studio, Campus & Remote Shoots (# Hours)	---	---	585	305	211	323	511	651	392	830
Telecourse Playback	---	---	---	---	---	---	1,885	2,135	2,069	1,461
Editing/Dubbing Sessions (# Hours)	---	---	85	117	196	177	194	305	190	3,342
Teleconference Program (# Hours)	---	---	42	74	146	149	77	103	109	59

SOURCE: Learning Resource Center

## Student Learning Assistance Center

The Student Learning Assistance Center (SLAC) supplements classroom instruction by offering learning strategies that enhance the success potential of traditional and non-traditional students in the college environment. The goal of the SLAC is to enable the Alamo Community College District (San Antonio College, St. Philip's College, Palo Alto College, and Northwest Vista College) students to be independent and resourceful learners by providing learning strategies appropriate to non-traditional students and students with diverse learning styles. SLAC develops independent learners by teaching students how to learn rather than merely giving them quick answers. The learning strategies offered through the SLAC include: Tutoring Services, Computer Services, Video Tape Services and Study Skill Services.

The SLAC has several computer programs for student use such as Accounting, Electronic mail, Foreign Languages tutorial, Internet access, Microsoft Office and word processing. The computers are available on a first-come, first-serve basis. On occasion, a teacher will bring a class into the SLAC for a demonstration of a specific software package, which may require several computers to be reserved for the class period.

During the 1998-99 school year, the SLAC had 64,163 student visits to use the computer facilities. Software programs include MS Word, WordPerfect, accounting, spreadsheets, databases, Internet, foreign languages, management, history, psychology, mathematics and chemistry. Over 400 class sessions were held in the SLAC during the year from Management, Business Administration, Legal Assisting, English, Public Administration, Chemistry, Computer Science and Continuing Education.

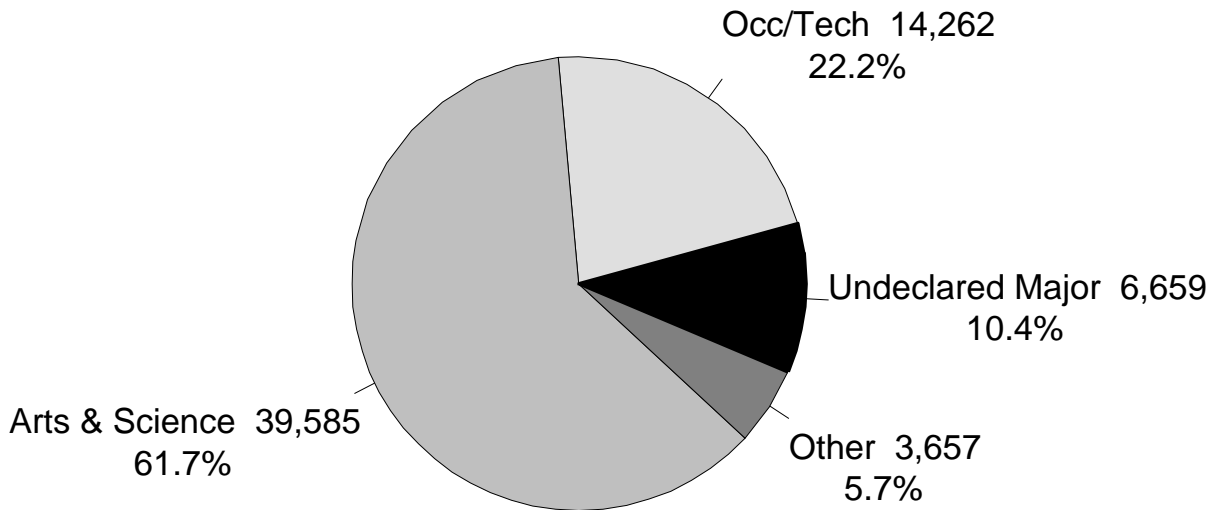
### STUDENT LEARNING ASSISTANCE CENTER VISIT SUMMARY

1998-1999

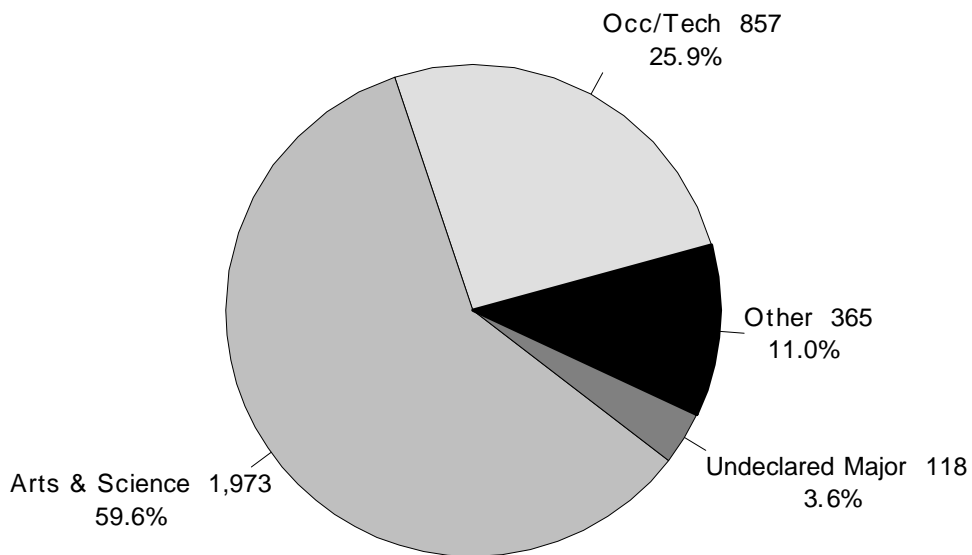
User	Computer Usage		Tutoring Visits		Lang. Lab	Workshops Seminars	Total All
Occupational & Technical Ed.	14,262	22.2%	857	25.9%			
Arts & Science	39,585	61.7%	1,973	59.6%			
Continuing Education	60	0%	0	0%			
Nicaragua Peace Scholarship Program	1,724	2.7%	135	4%			
Major TBA	1,873	2.9%	230	6.9%			
Undeclared Major	6,659	10.4%	118	3.6%			
<b>TOTAL SLAC VISITS</b>	<b>64,163</b>	<b>100%</b>	<b>3,313</b>	<b>100%</b>	<b>10,231</b>	<b>89</b>	<b>77,796</b>

Source: Student Learning Assistance Center

**STUDENT LEARNING ASSISTANCE CENTER COMPUTER USAGE 1997-98**  
**(64,163 Total Visits)**



**STUDENT LEARNING ASSISTANCE CENTER TUTORING VISITS 1997-98**  
**(3,313 Total Visits)**



SOURCE: Student Learning Assistance Center



## TRANSFER

## Tech Prep

San Antonio College is engaged in major technical and professional career preparation by providing continuity of learning and quality educational opportunities for all students. The Tech Prep/Associate Degree program is a significant component of this concept providing educational and career preparation in technical fields to high school students who will be the workforce of the future.

The concept of Tech Prep involves a sequence of knowledge and skills acquisition beginning in elementary school, linked with a guided, integrated high school plan of academic and technical subjects which connects the student to the community college and the university. Articulation provides the avenue for high schools and community colleges to share a jointly developed competency-based, industry-validated curriculum without duplication or repetition. The Tech Prep curricula in high schools and colleges represent a rigorous body of knowledge and skills that will prepare a better-educated worker with advanced skills and the ability to apply these skills as the world of technology changes.

In collaboration with regional independent school districts, San Antonio College has developed Tech Prep Associate Degree programs in Child Development, Computer-Aided Drafting and Design, Criminal Justice/Law Enforcement, Electronics, Medical and Dental Assisting and Office Systems Technology. A new Memorandum of Understanding between the U.S. Navy and San Antonio College has been signed allowing high school students to earn articulated credit toward an associate degree in nuclear electronics, advanced electronics and computers. These programs have been approved or are pending approval by the Texas Higher Education Coordinating Board.

## Transfer Resource and Advisement Center

In the Transfer Resource and Advisement Center, students may obtain 2 + 2 degree plans, admission and scholarship applications to four-year colleges/universities, information on transferring, as well as several computer programs including: Peterson's Financial Aid Program and World Wide Web resources that include Web U. S. universities by state; college and universities-Mexico; office of admission at Universities on the Web, minority scholarships and fellowships, and academic advising resources on the Internet. Use of computers is on an appointment basis. Visits to four-year colleges and universities are offered periodically to allow students to see first hand local and out-of-town college campuses. Admission representatives from various colleges and universities provide students with firsthand information about transferring. A schedule of these visits is maintained in the Transfer Center.

## 2 + 2 Agreements with Four-Year Institutions

Abilene Christian University  
 Angelo State University  
 Baylor University  
 Our Lady of the Lake University  
 Southwest Texas State University  
 St. Mary's University  
 Sul Ross State University  
 Texas A & M University – College Station  
 Texas A & M University – Corpus Christi  
 Texas A & M University – Kingsville  
 Texas Lutheran University  
 Texas State Technical College – Harlingen  
 Universidad de Guadalajara  
 University of Houston  
 University of Houston – Victoria  
 University of the Incarnate Word  
 University of Texas at San Antonio  
 University of Texas Health Science Center – San Antonio

**CONTENTS – STUDENT PROFILE**

**GENERAL INFORMATION**

Gender, Ethnicity, Age, Major, Hours Enrolled, Day vs. Evening.....21

Top Ten:

    Academic Majors..... 22

    Vocational Majors..... 22

    Feeder High Schools..... 22

    Zip Codes of Residence ..... 23

    Counties of Residence ..... 23

    States of Residence ..... 23

Student Objective in Attending San Antonio College ..... 24

Intended Duration of Enrollment..... 24

Previous College Experience ..... 24

Student Employment Status..... 24

Financial Aid and Scholarship Awards ..... 25

**ACADEMIC ACHIEVEMENT**

Grade Distribution, Fall 1998..... 26

Grade Distribution Trends, Fall Semesters 1994-1998..... 26

Fall to Fall Retention by Ethnicity, 1991-1992 to 1996-1997 ..... 27

Retention of First-Time, Full-Time Freshmen by Ethnicity, Fall 1997 ..... 27

Graduation Degrees & Certificates Awarded, 1997-1998..... 28

Graduation Degrees by Ethnicity, 1997-1998..... 28

Graduation Degrees & Certificates Awarded, 1993-1994 to 1997-1998 ..... 28

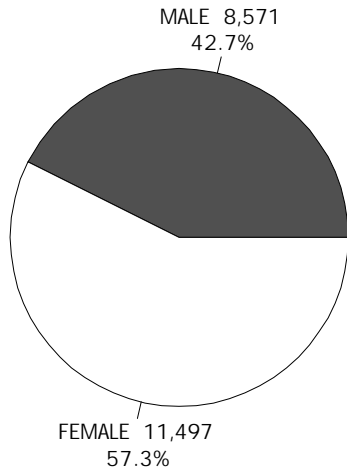
TASP Results by Institution, 1997-1998..... 29

TASP Pass Rates by Ethnicity, 1997-1998 ..... 29

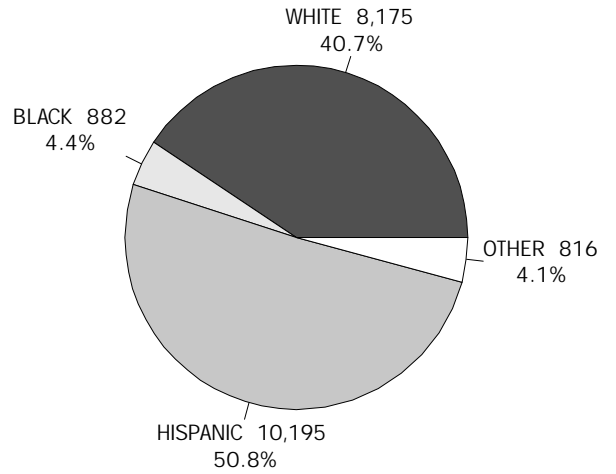
ACT Average Scores, 1997-1998 ..... 29

**FALL 98**  
**20,068 STUDENTS**

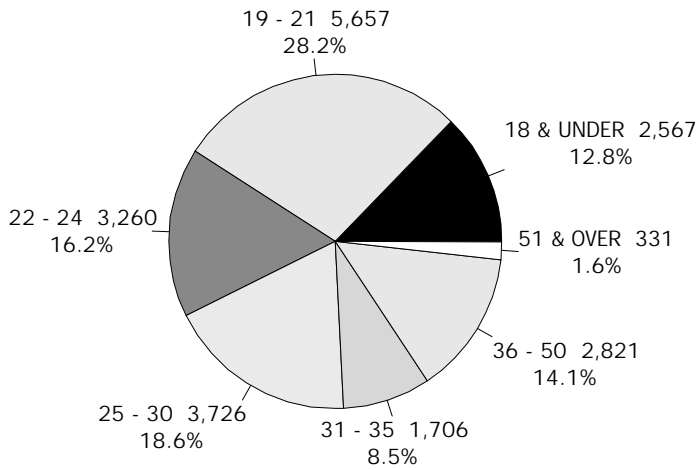
**GENDER**



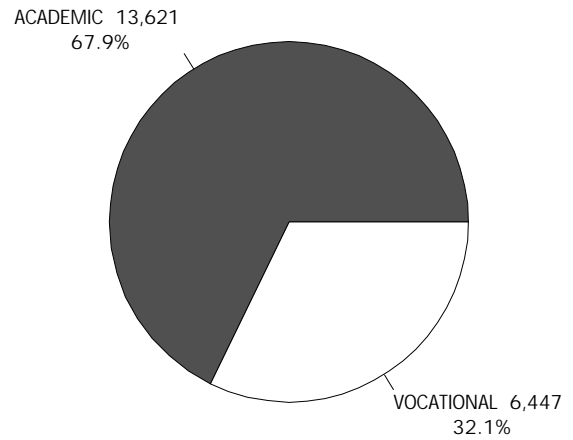
**ETHNICITY**



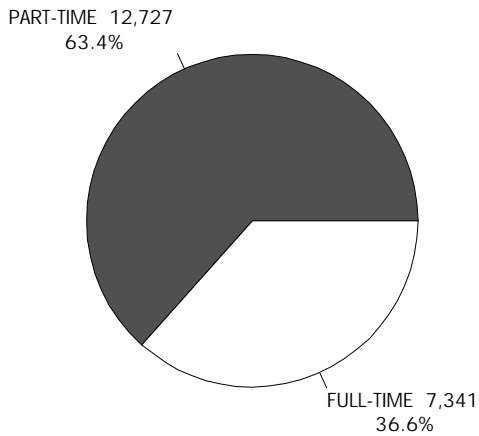
**AGE**



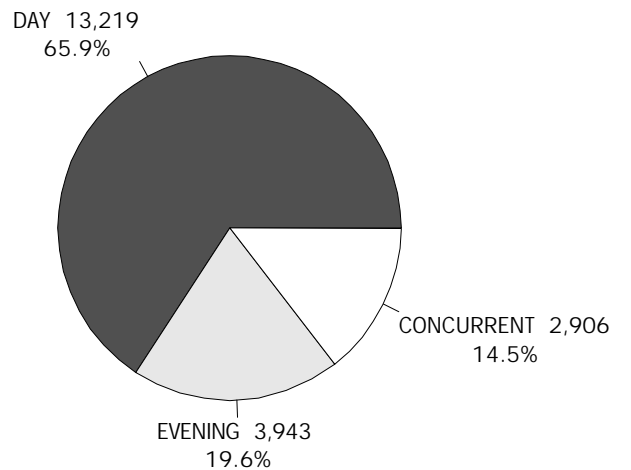
**MAJOR**



**HOURS ENROLLED**



**DAY VS. EVENING**



CBM001, 11/12/98; RCA003, 06/30/99

**FALL 98 - TOP TEN  
ACADEMIC MAJORS**

MAJORS	NUMBER
1. Liberal Arts	6,788
2. Business Administration – Accounting	1,298
3. Education	933
4. Psychology	506
5. Biological Sciences	500
6. Nursing (4-Year Degree)	482
7. Computer Science	346
8. Medicine	268
9. Engineering	259
10. Art	237

SOURCE: RCA003, 9/05/98

**VOCATIONAL MAJORS**

MAJORS	NUMBER
1. Pre-Nursing	928
2. Nursing (RN)	489
3. Criminal Justice-Law Enforcement Option	404
4. Computer Programming	301
5. Radio-TV-Film Technology	243
6. Management	227
7. Accounting Technology	208
8. Network Administration	206
9. Electronic Graphic Arts	196
10. Legal Assisting	187

SOURCE: RCA003, 9/05/98

**FEEDER HIGH SCHOOLS (FTIC'S)**

HIGH SCHOOLS	NUMBER
1. Winston Churchill – North East I.S.D.	317
2. Alamo Heights – Alamo Heights I.S.D.	145
3. James Madison – North East I.S.D.	126
4. Robert E. Lee – North East I.S.D.	124
5. Tom Clark – Northside I.S.D.	117
6. Oliver W. Holmes – Northside I.S.D.	114
7. Douglas MacArthur – North East I.S.D.	112
8. Thomas Jefferson – San Antonio I.S.D.	109
9. Judson High School – Judson I.S.D.	100
10. John Marshall – Northside I.S.D.	96

SOURCE: RFA9781, 3/24/98

## FALL 98 - TOP TEN

## ZIP CODES

ZIPCODES	NUMBER
1. 78240	979
2. 78228	938
3. 78250	938
4. 78213	913
5. 78216	798
6. 78201	789
7. 78247	689
8. 78230	681
9. 78229	671
10. 78212	652

SOURCE: RFA9421, 7/20/99

## COUNTIES OF RESIDENCE

COUNTIES	NUMBER
1. Bexar	18,710
2. Comal	480
3. Guadalupe	356
4. Kerr	242
5. Kendall	102
6. Wilson	98
7. Medina	94
8. Bandera	78
9. Atascosa	51
10. Frio	15

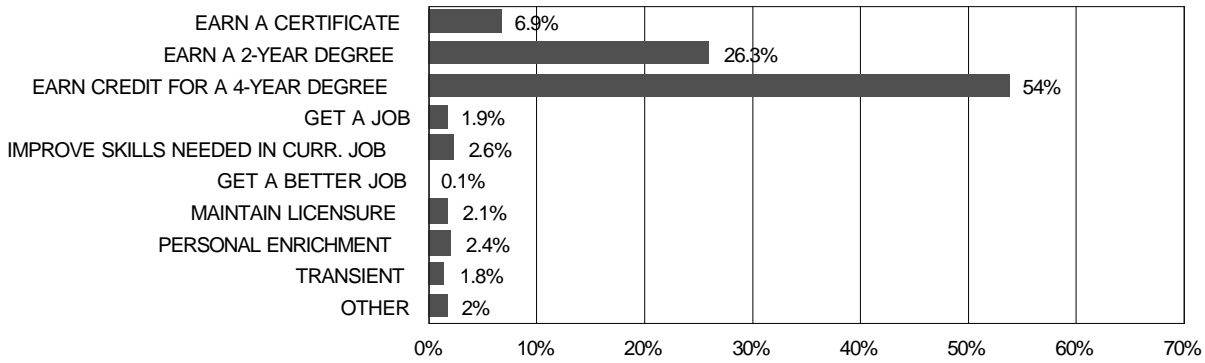
SOURCE: RCA003, 9/05/98

## STATES OF RESIDENCE

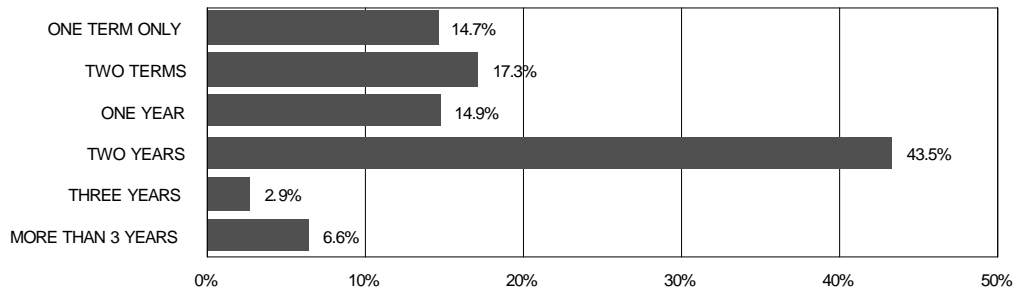
STATES	NUMBER
1. Texas	19,555
2. California	73
3. Missouri	54
4. Florida	40
5. Pennsylvania	26
6. New York	22
7. Illinois	21
8. Michigan	19
9. New Mexico	17
10. Ohio	15

SOURCE: RCA003, 9/05/98

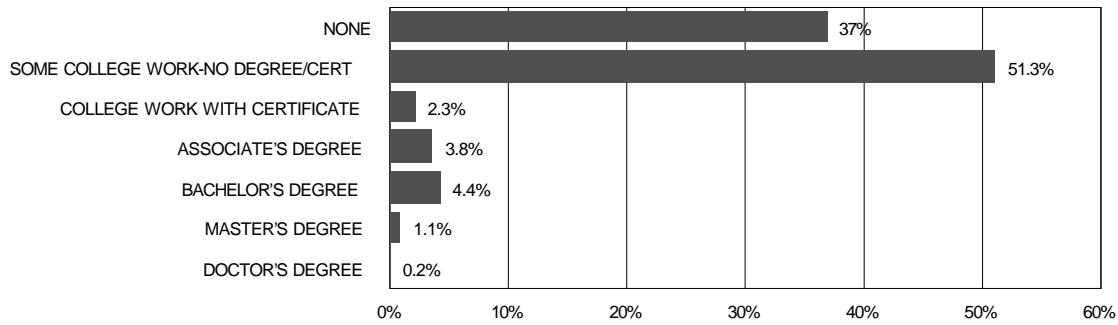
**STUDENT OBJECTIVE IN ATTENDING SAN ANTONIO COLLEGE**



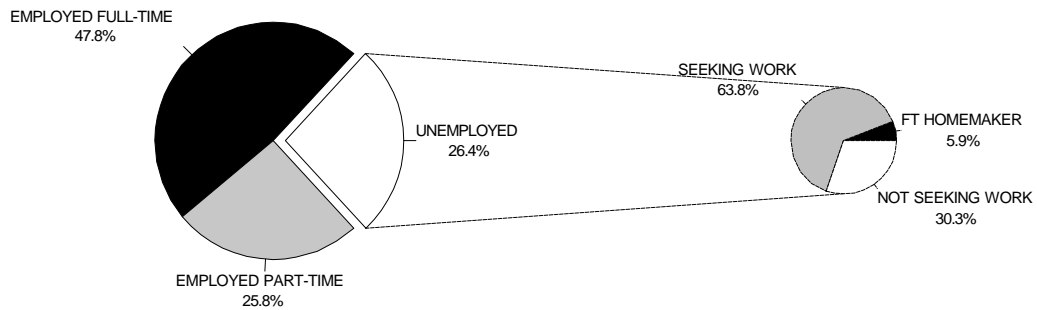
**INTENDED DURATION OF ENROLLMENT**



**PREVIOUS COLLEGE EXPERIENCE**



**STUDENT EMPLOYMENT STATUS**



SOURCE: STUDENT TRACKING SURVEY (AFA940, 7/21/99) as of Fall 1998 (20,921 total respondents)

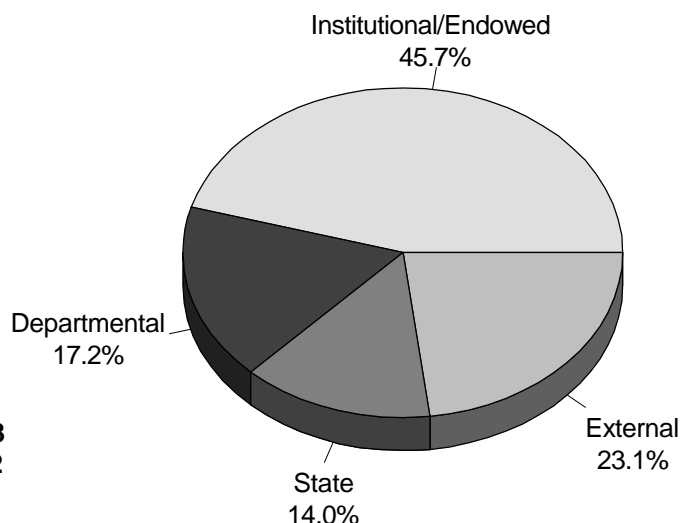
**FINANCIAL AID AWARDS 1998-1999**

CATEGORY	AMOUNT	# AWARDS
Pell Grant	\$9,849,491	6,090
Stafford Loan	6,133,533	2,247
Federal Work Study	1,416,006	704
Supplemental Education Opportunity Grant (SEOG)	691,966	1,112
Scholarships	564,485	1,228
State Incentive Grant (SSIG)	40,834	79
Texas Work Study	41,105	19
Texas Public Education Grant (TPEG)	610,707	1,072
<b>TOTAL</b>	<b>\$19,348,127</b>	<b>12,551</b>

SOURCE: Student Financial Aid Office

**SCHOLARSHIPS AWARDED 1998-1999**

Institutional/Endowed	\$ 257,738
Departmental	97,139
State	79,041
External	130,567
<b>Total Awarded</b>	<b>\$ 564,485</b>



Total number of scholarships awarded: **1,228**  
 Total number of students receiving scholarships: **902**

Scholarships are available from a variety of sources both private and public. Below are types of scholarships available through San Antonio College.

**Endowed scholarships-** awarded by ACCD. Contributions made to ACCD scholarship foundation by private donors. Applications available at Student Financial Services.

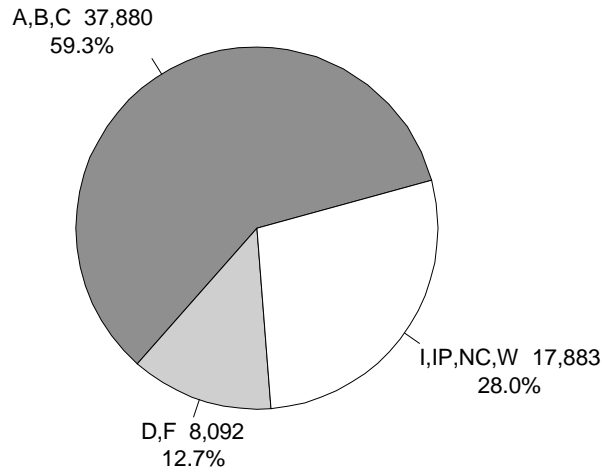
**Institutional scholarships-** awarded by Student Financial Services. Applications available at Student Financial Services Office.

**Departmental scholarships-** awarded by departments. Private gifts donated to departments from various organizations. Awards usually based on major, GPA, community work. For additional information/ applications, contact departments.

**State scholarships-** Texas Tuition Assistance Grant, Early High School Graduates, Good Neighbor, and Professional Nursing available through the Texas Higher Education Coordinating Board. Awarded by Student Financial Services.

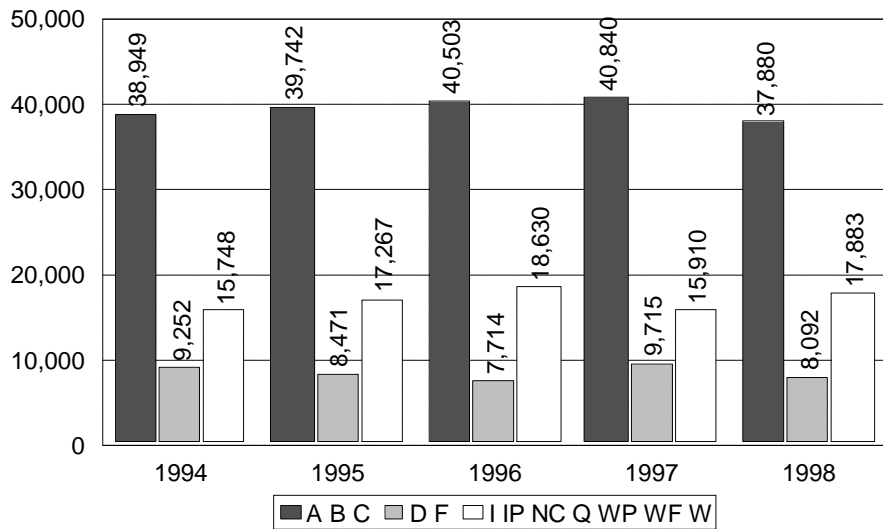
**External scholarships-** awarded by a variety of off-campus businesses/organizations for students attending San Antonio College.

**GRADE DISTRIBUTION – FALL 1998**



**GRADE DISTRIBUTION TRENDS – FALL 1994-98**

	A	B	C	Prod Rate	D	F	Comp Rate	I	IP	NC	W	Total
<b>1994</b>	12,864 20.1%	15,274 23.9%	10,811 16.9%	38,949 60.9%	3,452 5.4%	5,800 9.1%	48,201 75.4%	0 0.0%	9 0.0%	282 0.4%	15,457 24.2%	63,949 100.0%
<b>1995</b>	13,552 20.7%	15,269 23.3%	10,921 16.7%	39,742 60.7%	3,448 5.3%	5,023 7.7%	48,213 73.6%	1,170 1.8%	199 0.3%	203 0.3%	15,695 24.0%	65,480 100.0%
<b>1996</b>	14,086 21.1%	15,366 23.0%	11,051 16.5%	40,503 60.6%	3,290 4.9%	4,424 6.6%	48,217 72.1%	1,112 1.7%	268 0.4%	238 0.4%	17,012 25.4%	66,847 100.0%
<b>1997</b>	14,406 21.7%	15,459 23.3%	10,975 16.5%	40,840 61.4%	3,422 5.1%	6,293 9.5%	50,555 76.1%	0 0.0%	191 0.3%	158 0.2%	15,561 23.4%	66,465 100.0%
<b>1998</b>	12,926 20.2%	14,515 22.7%	10,439 16.3%	37,880 59.3%	3,323 5.2%	4,769 7.5%	45,972 72.0%	820 1.3%	204 0.3%	203 0.3%	16,656 26.1%	63,855 100.0%



SOURCE: RFA696, 1/28/99



FALL TO FALL RETENTION BY ETHNICITY 1991-1992 TO 1996-1997

	91-92 %	92-93 %	93-94 %	94-95 %	95-96 %	96-97 %
<b>% who reenrolled at San Antonio College the next Fall</b>						
Anglo	41.8	40.3	41.2	41.6	40.9	40.0
Black	37.5	35.8	39.4	38.7	37.3	35.5
Hispanic	45.8	43.0	45.6	45.6	45.5	45.2
Asian	49.0	48.3	45.1	46.7	45.0	51.8
Native American/Alaskan	48.8	43.0	38.2	48.3	44.2	36.5
Alien	51.2	48.6	58.2	48.0	45.3	46.8
<b>Total</b>	<b>43.7</b>	<b>41.6</b>	<b>43.5</b>	<b>43.6</b>	<b>43.2</b>	<b>42.7</b>
<b>Texas</b>	<b>39.8</b>	<b>39.4</b>	<b>39.5</b>	<b>39.1</b>	<b>37.2</b>	<b>38.8</b>
<b>% not found in any state college the next Fall</b>						
Anglo	43.4	45.8	45.6	45.5	45.4	46.1
Black	51.3	54.2	50.7	52.5	53.7	53.7
Hispanic	44.4	48.5	44.7	45.4	45.2	45.1
Asian	36.9	39.4	39.8	41.1	41.3	35.3
Native American/Alaskan	43.9	48.8	51.3	38.2	42.1	52.9
Alien	42.7	46.4	33.5	41.2	44.2	48.3
<b>Total</b>	<b>44.1</b>	<b>47.4</b>	<b>45.2</b>	<b>45.6</b>	<b>45.5</b>	<b>45.7</b>
<b>Texas</b>	<b>47.0</b>	<b>47.5</b>	<b>47.1</b>	<b>47.6</b>	<b>47.2</b>	<b>47.3</b>

SOURCE: The Higher Education Coordinating Board Student Migration Report; transfer to private or out-of-state institutions not considered

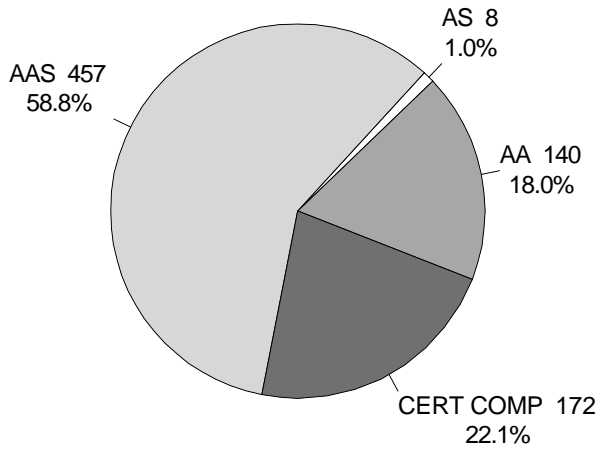
RETENTION OF FIRST-TIME FULL-TIME\* FRESHMEN BY ETHNICITY  
FALL 1997

	WHITE	BLACK	HISPANIC	ASIAN	NATIVE AM/ ALASKAN	INTERNATIONAL	TOTAL
<u>San Antonio College</u>							
Enrolled Fall 1996	576	58	952	35	3	32	1,656
Retained After One Year	318	21	500	21	2	14	876
Percent Retained	55.2%	36.2%	52.5%	60.0%	66.7%	43.8%	52.9%
<u>Total – Texas</u>							
Enrolled Fall 1996	23,758	4,277	12,337	1,114	218	604	42,308
Retained After One Year	12,176	1,794	6,866	719	85	286	21,926
Percent Retained	51.3%	41.9%	55.7%	64.5%	39.0%	47.4%	51.8%

SOURCE: Texas Higher Education Coordinating Board – 1998 Statistical Report

\* A student who is enrolled in 12 or more semester credit hours at a community college or 8 or more semester credit hours at a technical college.

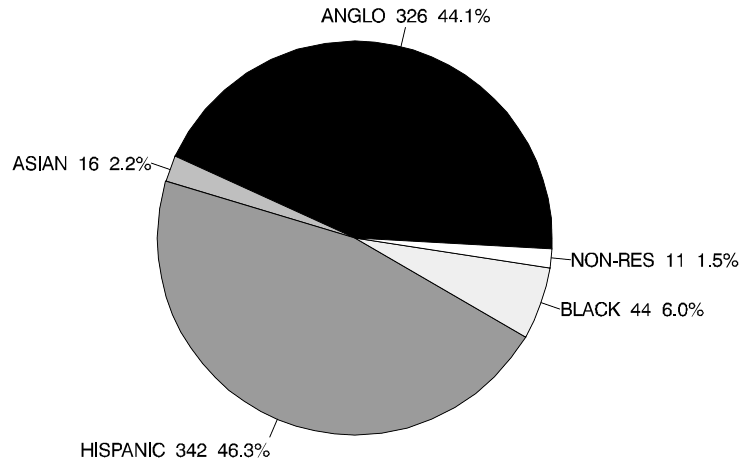
**1997-1998 GRADUATION  
DEGREES & CERTIFICATES AWARDED**



**TOTAL DEGREES: 777**

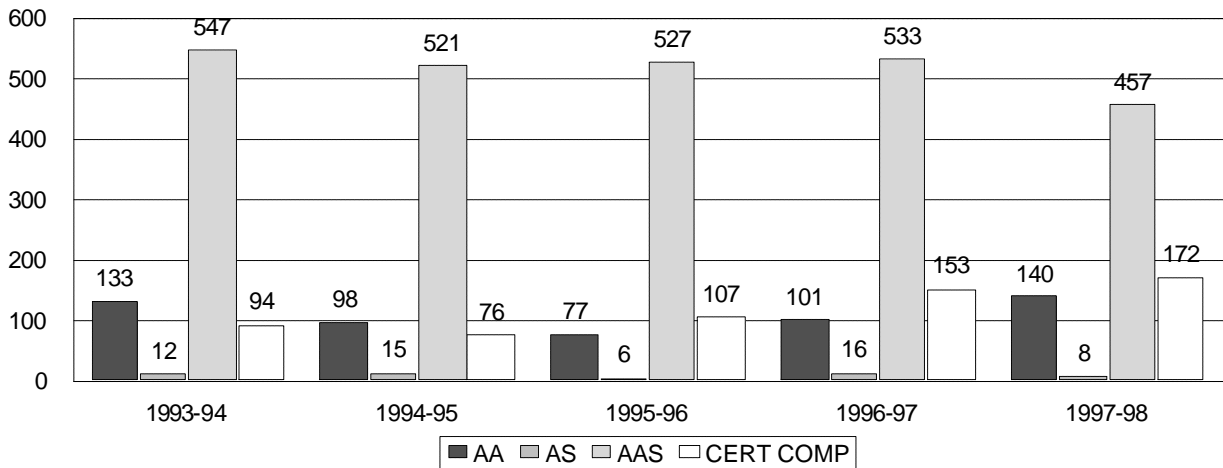
SOURCE: CBM009, 11/23/98

**1997-1998 GRADUATES  
BY ETHNICITY**



**TOTAL GRADUATES: 739**

**DEGREES AND CERTIFICATES AWARDED 1993-1994 TO 1997-1998**



DEGREE OR CERT.	93-94	94-95	95-96	96-97	97-98
AA	133 16.9%	98 13.8%	77 10.7%	101 12.6%	140 18.0%
AAS	547 69.6%	521 73.4%	527 73.5%	533 66.4%	457 58.8%
AS	12 1.5%	15 2.1%	6 0.8%	16 2.0%	8 1.0%
CERT COMP	94 12.0%	76 10.7%	107 14.9%	153 19.1%	172 22.1%
TOTAL	786	710	717	803	777

SOURCE: CBM009, 11/23/98

**\* TASP RESULTS BY INSTITUTION 1997-1998**

<b>INSTITUTION</b>	<b># OF EXAMINEES THAT TOOK ALL 3 PARTS</b>	<b>% PASSED READING</b>	<b>% PASSED MATH</b>	<b>% PASSED WRITING</b>	<b>% PASSED ALL SECTIONS</b>
San Antonio College	1,529	52.3	49.5	59.4	42.7
St. Philip's College	638	50.2	44.2	70.3	41.4
Palo Alto College	578	53.7	42.2	64.0	41.0
UT San Antonio	816	61.1	54.4	65.4	54.0
Southwest Texas State U.	620	77.3	58.4	73.3	61.0
Texas Two-Year	47,175	45.2	40.6	53.4	37.1
Texas Four-Year	18,658	53.3	45.1	58.6	44.6
Texas Total	65,833	47.3	41.9	54.8	39.2

SOURCE: Texas Higher Education Coordinating Board TASP Test Results Academic Year 1997-1998.

**\* TASP PASS RATES BY ETHNICITY 1997-1998**

<b>INSTITUTION</b>	<b>ASIAN</b>	<b>BLACK</b>	<b>HISPANIC</b>	<b>WHITE</b>	<b>OTHER</b>	<b>TOTAL</b>
San Antonio College	23.2	40.0	41.4	51.8	24.4	42.7
St. Philip's College	25.0	36.8	43.6	42.9	0.0	41.4
Palo Alto College	80.0	33.3	37.9	49.3	100.0	41.0
Texas Two-Year	21.9	27.2	33.2	47.1	27.1	37.1

SOURCE: Texas Higher Education Coordinating Board TASP Test Results Academic Year 1997-1998.

\* TASP passing rates represent a duplicate headcount of students who re-took the TASP one or more times during the year and passed one or more sections. This table does not include students who passed TASP completely on the first attempt.

**ACT AVERAGE SCORES 1997-1998**

<b>SUBTEST</b>	<b>SAC</b>	<b>2-YR INSTITUTIONS</b>	<b>NATIONAL</b>
English	19.0	18.4	21.2
Math	19.7	18.4	21.2
Reading	20.3	19.4	22.2
Science	20.0	19.5	21.7
Composite	19.9	19.1	21.7
# Examinees	967	N/A	529,598

SOURCE: ACT Class Profile National Norms, 1997-98 ACT Class Profile San Antonio College 1997-98

## CONTENTS – ENROLLMENT TRENDS

### Credit Programs:

Fall Semesters 1989-1998 and Spring Semesters 1990-1999.....	31
Summer I Session 1990- 1999 & Summer II Sessions 1990-1998 .....	32
By Classification Fall Semesters 1994-1998 (Summary Statistics) .....	33
By Gender .....	34
By Ethnicity.....	34
By Division.....	35
Part-Time vs. Full-Time .....	35
Day vs. Evening.....	36
By Residency .....	36
By Age.....	37
First-Time Students .....	37
Contact Hours, Fall & Spring Semesters 1994-1999.....	38
Contact Hours, Summers I & II 1995-1999.....	38
Off-Campus Enrollment, Fall 1996 – Spring 1999.....	39

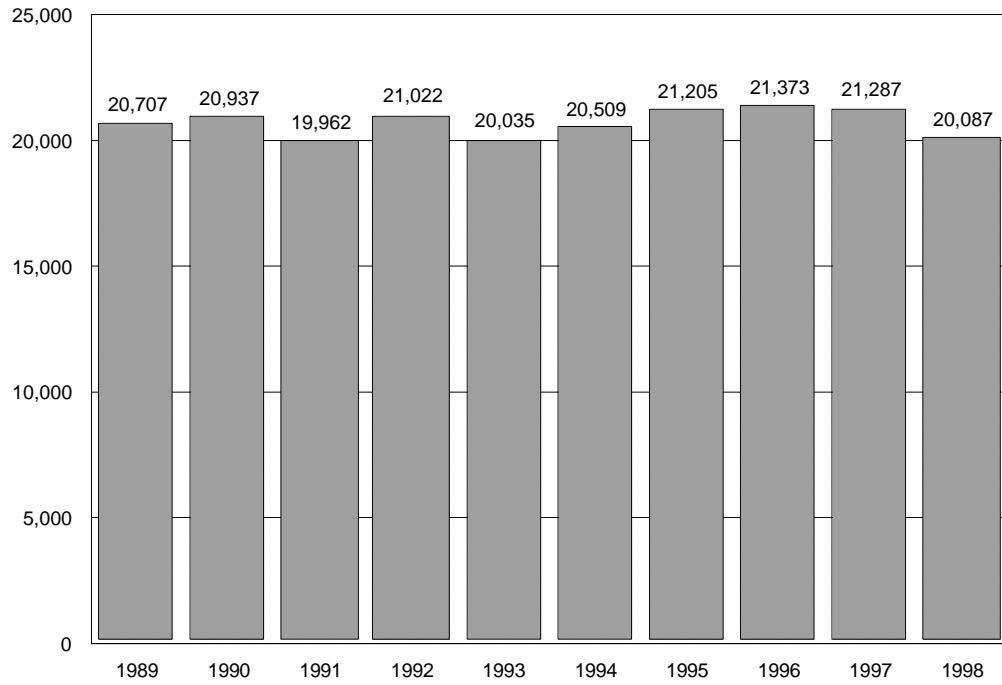
### Developmental Education:

Enrollment Fall Semesters 1994-1998 .....	40
Trends in Developmental English.....	41
Trends in Developmental Math.....	41
Trends in Developmental Reading .....	41

### Continuing Education:

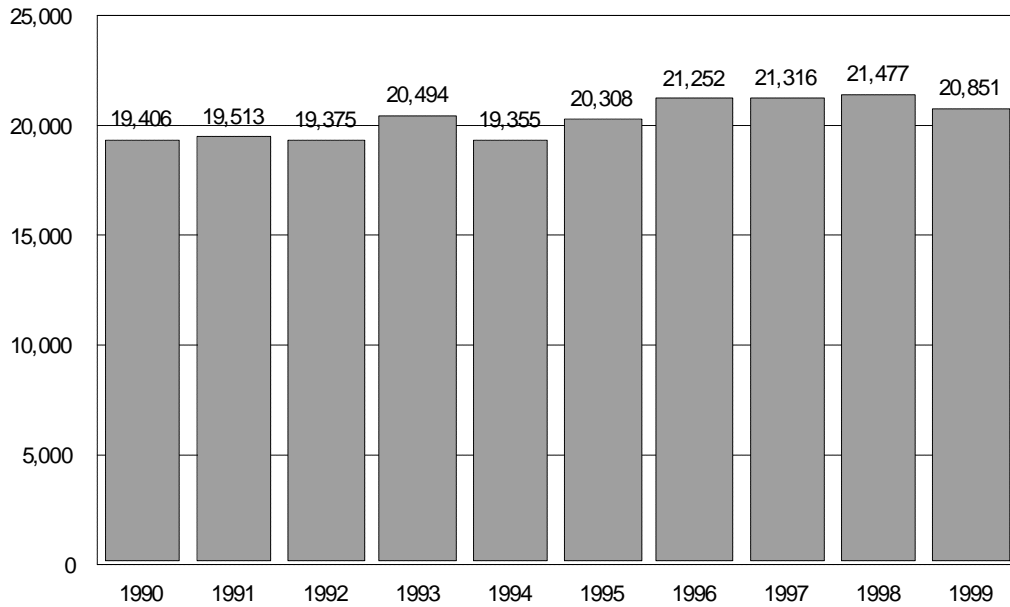
Highlights.....	42
Contract Training, Significant Activities.....	43
Contract Companies.....	44
Total Enrollment 1989-1990 to 1998-1999 .....	45
Tuition/Fee Revenue 1989-1990 to 1998-1999.....	45
Reimbursable Headcount by Quarter 1994-1998.....	46
Reimbursable Contact Hours by Quarter 1994-1998 .....	46
Reimbursable Classes by Quarter 1994-1998 .....	46

**ENROLLMENT FALL SEMESTERS 1989 – 1998**



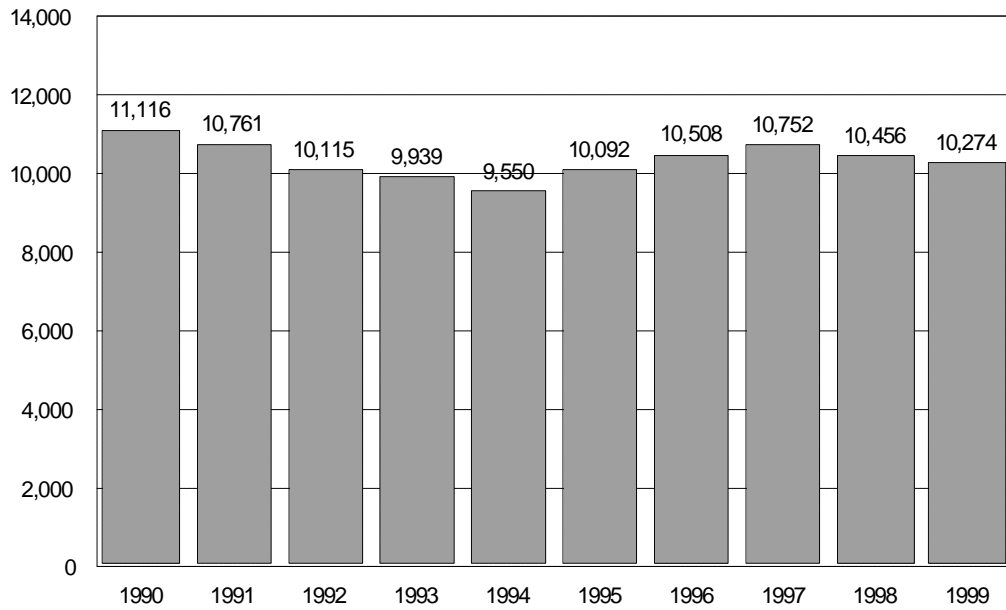
SOURCE: CBM001

**ENROLLMENT SPRING SEMESTERS 1990 – 1999**



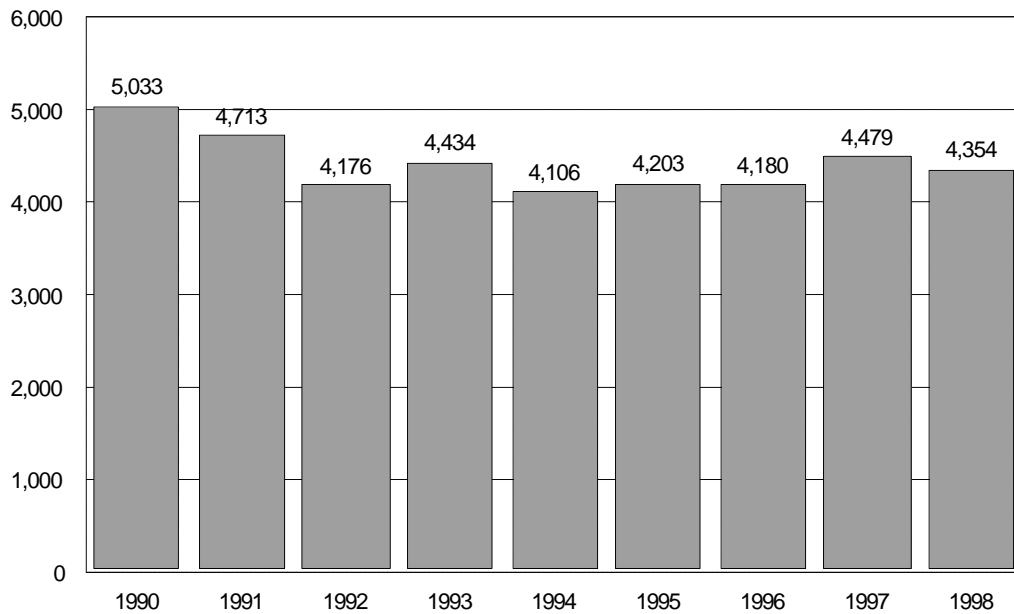
SOURCE: CBM001

**ENROLLMENT SUMMER SESSION I 1990 – 1999**



SOURCE: CBM001

**ENROLLMENT SUMMER SESSION II 1990 – 1998**



SOURCE: CBM001

Note: Summer II 1999 certified data not available in time for publication.

## ENROLLMENT TRENDS BY CLASSIFICATION – FALL 1994-1998

	1994	1995	1996	1997	1998
<b>GENDER</b>					
Female	11,679	12,268	12,435	12,306	11,497
Male	8,804	8,937	8,929	8,981	8,571
<b>ETHNICITY</b>					
White	8,476	8,676	8,837	8,824	8,175
Black	1,005	961	926	888	882
Hispanic	10,204	10,746	10,795	10,735	10,195
Other	798	822	806	840	816
<b>AGE</b>					
17 & under	212	314	591	1,128	824
18	1,654	1,795	1,687	1,752	1,743
19 - 21	5,876	6,004	6,204	5,972	5,657
22 - 24	3,675	3,630	3,507	3,493	3,260
25 - 30	3,763	3,937	3,885	3,834	3,726
31 - 35	2,157	2,170	2,136	1,924	1,706
36 - 50	2,859	3,012	3,010	2,825	2,821
51 - 64	272	325	329	341	316
65 & over	15	18	15	18	15
average age	26.4	26.5	26.3	26.0	26.1
<b>DIVISION</b>					
Arts & Sciences	14,147	14,615	14,832	14,642	13,621
Occ/Tech	6,336	6,590	6,532	6,645	6,447
<b>PART-TIME vs. FULL-TIME</b>					
Part-time	13,576	14,060	13,967	14,021	12,727
Full-time	6,907	7,145	7,397	7,266	7,341
<b>DAY vs. EVENING</b>					
Day	12,329	12,583	12,931	13,806	13,219
Evening	5,010	5,403	5,369	4,547	3,943
Concurrent	3,144	3,219	3,064	2,934	2,906
<b>RESIDENCY</b>					
Texas Counties	18,792	20,413	20,522	20,553	19,253
Other States	596	577	628	526	569
Foreign Countries	1,095	215	214	208	246
<b>TOTAL</b>	<b>* 20,483</b>	<b>21,205</b>	<b>* 21,364</b>	<b>21,287</b>	<b>* 20,068</b>

SOURCE: CBM001; RCA003

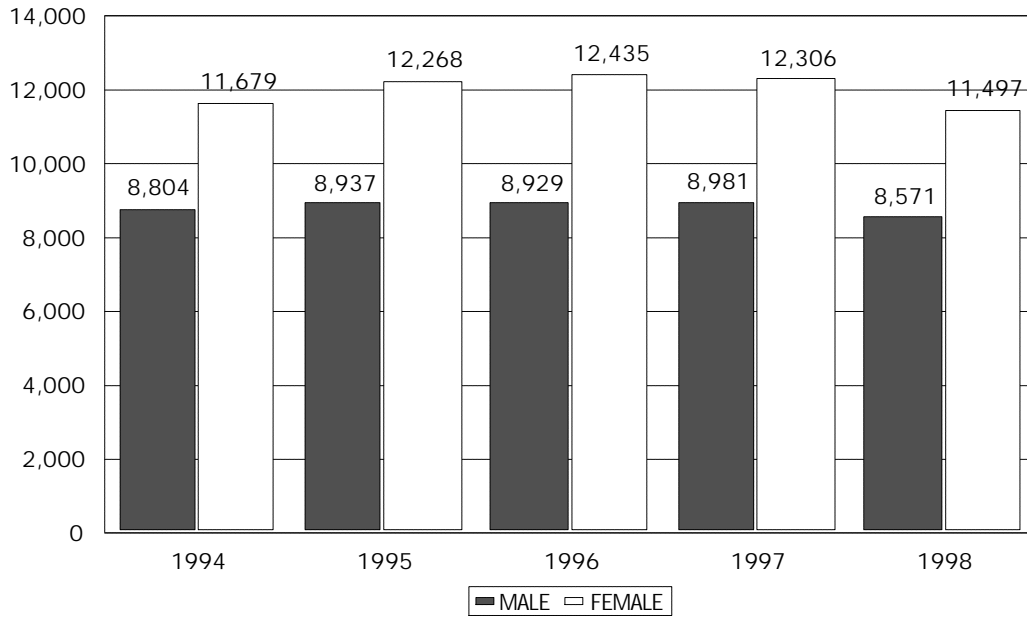
\* Total does not include flexible entry students for whom no demographic data are available.

Total Fall 94 enrollment is 20,509

Total Fall 96 enrollment is 21,373

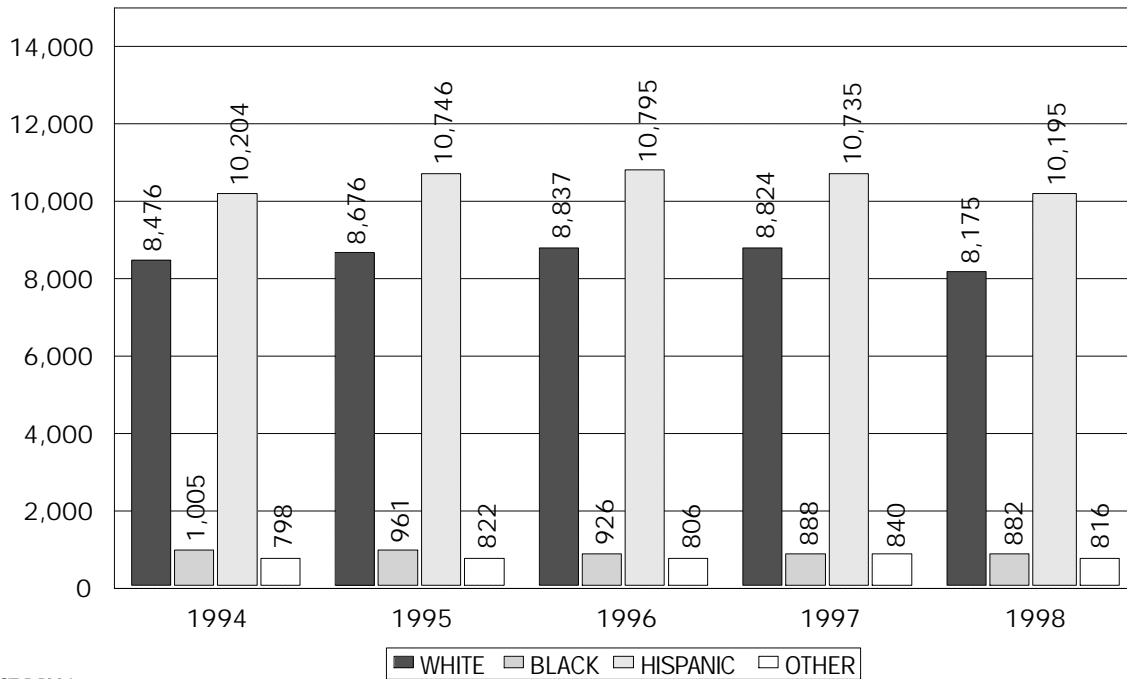
Total Fall 98 enrollment is 20,087

**BY GENDER FALL 1994 – 1998**



SOURCE: CBM001

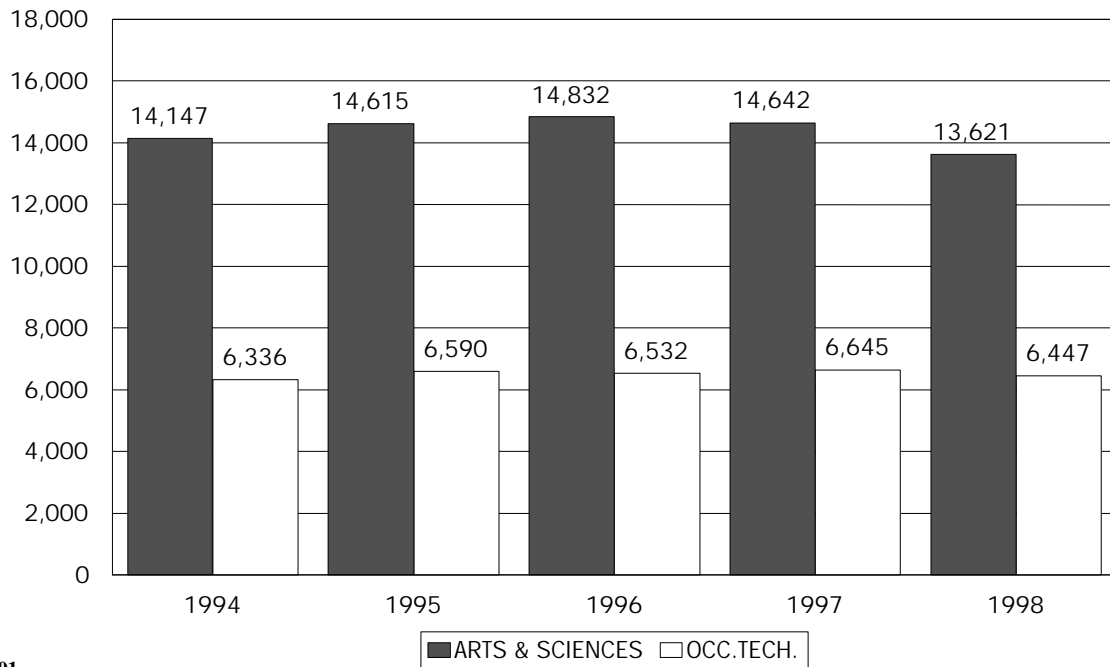
**BY ETHNICITY FALL 1994 – 1998**



SOURCE: CBM001

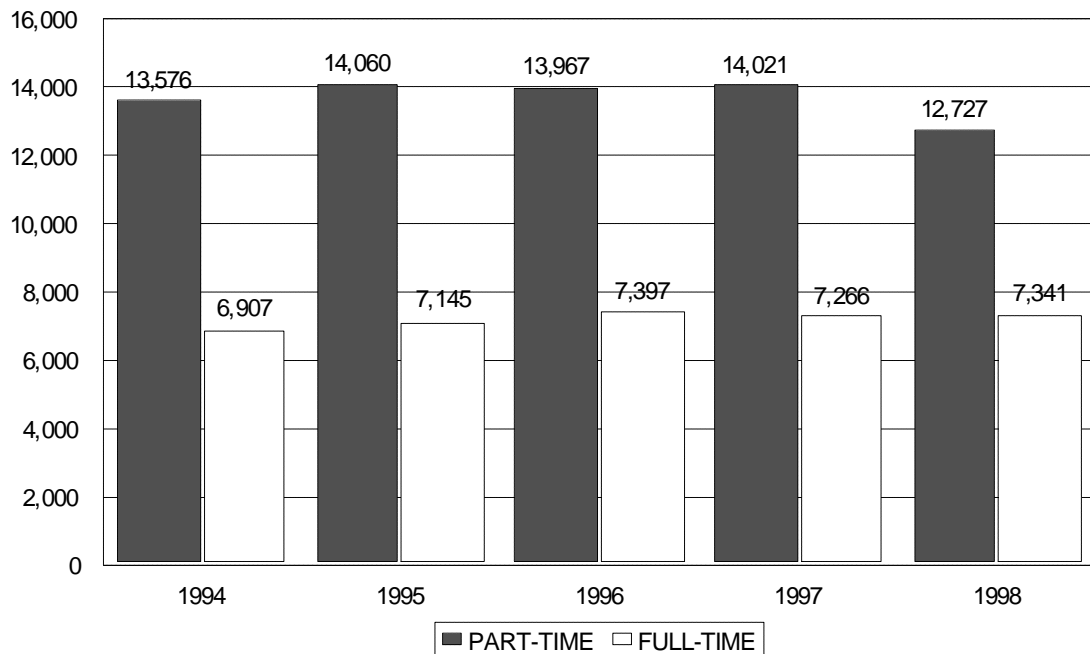


**BY DIVISION FALL 1994-1998**



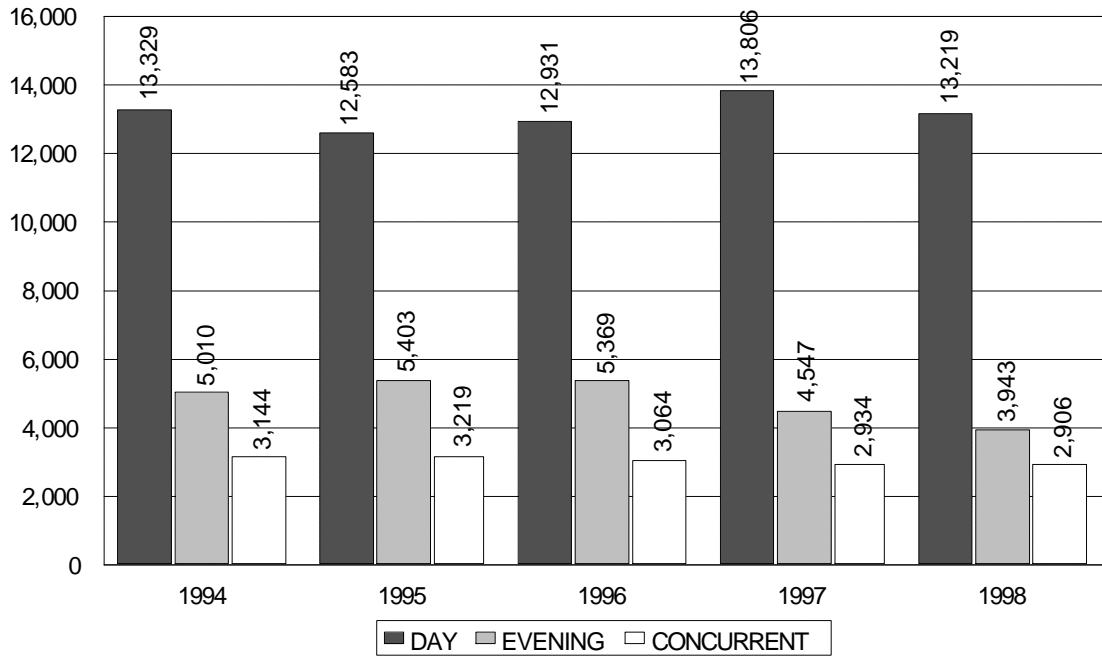
SOURCE: CBM001

**PART-TIME VS. FULL-TIME FALL 1994-1998**



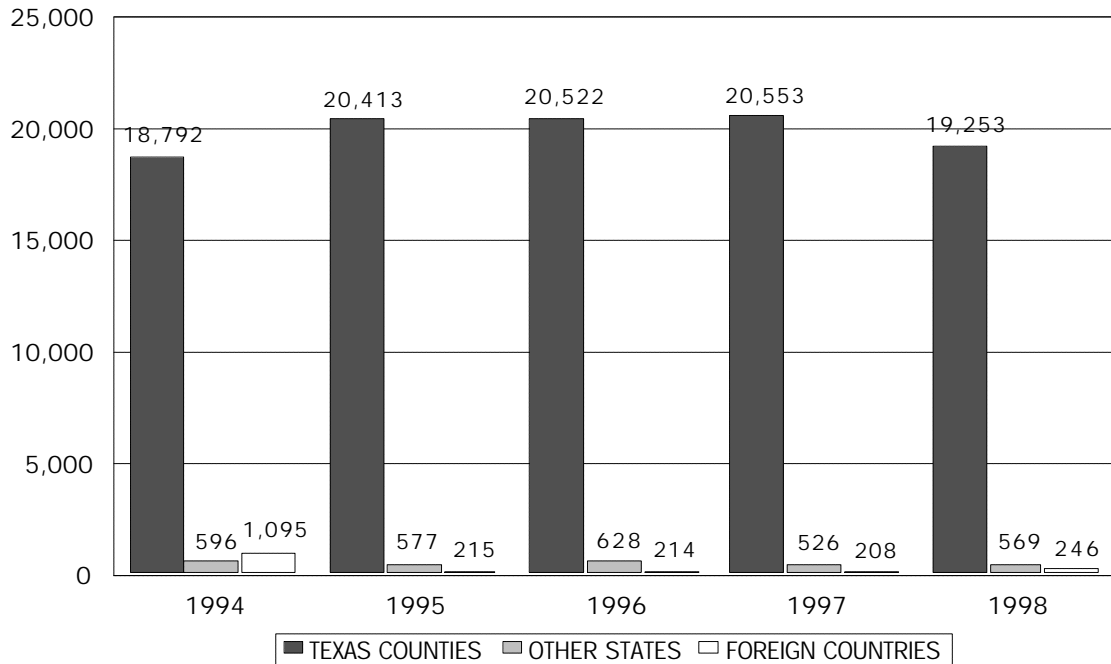
SOURCE: CBM001; RCA003

**DAY VS. EVENING FALL 1994 – 1998**



SOURCE: CBM001; RCA003

**BY RESIDENCY FALL 1994 - 1998**



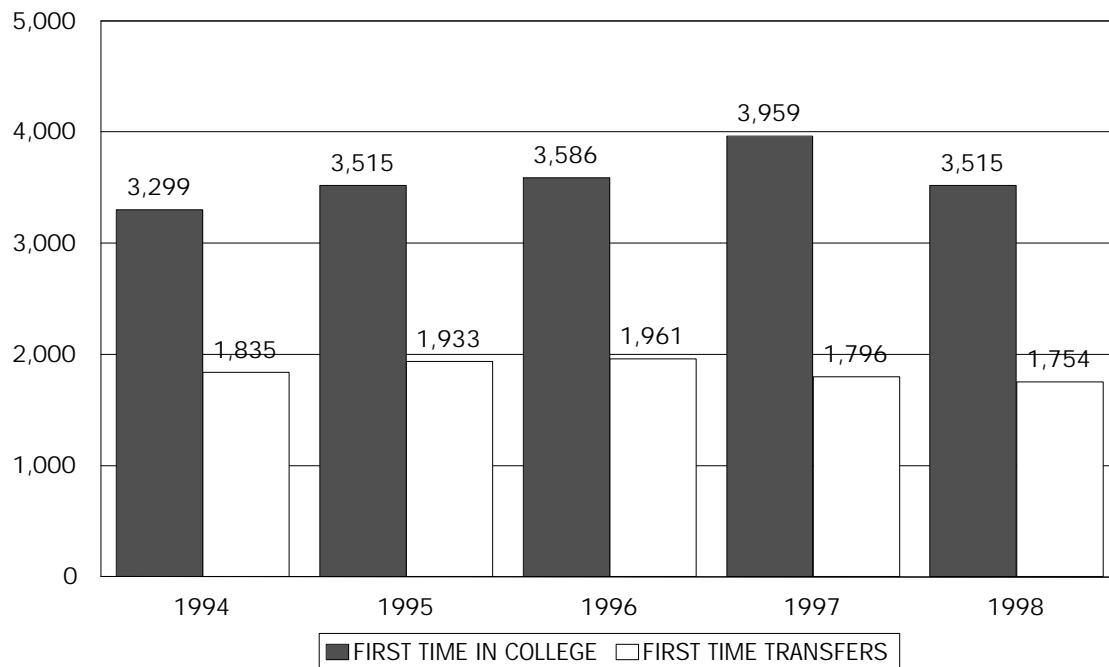
SOURCE: CBM001

**BY AGE FALL 1994 – 1998**

AGE	1994	1995	1996	1997	1998
17 & UNDER	212	314	591	1,128	824
18	1,654	1,795	1,687	1,752	1,743
19 – 21	5,876	6,004	6,204	5,972	5,657
22 – 24	3,675	3,630	3,507	3,493	3,260
25 – 30	3,763	3,937	3,885	3,834	3,726
31 – 35	2,157	2,170	2,136	1,924	1,706
36 – 50	2,859	3,012	3,010	2,825	2,821
51 – 64	272	325	329	341	316
65 & OVER	15	18	15	18	15
AVG. AGE	26.4	26.5	26.3	26.0	26.1

SOURCE: CBM001

**FIRST TIME STUDENTS FALL 1994 – 1998**



SOURCE: CBM001

## CONTACT HOURS FALL &amp; SPRING SEMESTERS 1994-1999

SEMESTER	ACADEMIC	OCC/TECH	TOTAL
FALL 1994 SPRING 1995*	2,648,176 2,410,816	665,440 752,336	3,313,616 3,163,152
FALL 1995 SPRING 1996*	2,694,448 2,509,600	699,620 805,382	3,394,068 3,314,982
FALL 1996 SPRING 1997*	2,717,872 2,523,216	710,484 815,938	3,428,356 3,339,154
FALL 1997 SPRING 1998*	2,678,912 2,454,448	693,920 831,504	3,372,832 3,285,952
FALL 1998 SPRING 1999*	2,563,056 2,360,928	709,776 830,448	3,272,832 3,191,376

SOURCE: Summary Table prepared by Records and Reports based on CBM004; \*includes Fall Flex II terms

## CONTACT HOURS SUMMERS I &amp; II 1995-1999

SEMESTER	ACADEMIC	OCC/TECH	TOTAL
SUM I 1995* SUM II 1995	645,456 300,016	199,968 27,440	845,424 327,456
SUM I 1996* SUM II 1996	661,760 296,496	242,976 34,464	904,736 330,960
SUM I 1997* SUM II 1997	664,672 315,024	249,646 38,636	914,318 353,660
SUM I 1998* SUM II 1998	646,208 312,416	242,128 30,950	888,336 343,366
SUM I 1999*	616,784	274,296	891,080

SOURCE: Summary Table prepared by Records and Reports based on CBM004; \*includes Spring Flex II terms  
Note: Summer II 1999 certified data not available in time for publication.

## OFF-CAMPUS ENROLLMENT FALL 1996 TO SPRING 1999

	Fall 96	Spring 97	Fall 97	Spring 98	Fall 98	Spring 99
Canyon High School		197	158			127
Churchill High School	250			108	114	151
Citicorp/Groos Bank	115	72	88	88	104	85
Edgewood High School	13					
Fort Sam Houston	159	60	24	59	58	174
Holmes High School	367	325				
Lackland Air Force Base	29	34				
MacArthur High School	135	116	102			
New Braunfels High School	269	167	150	332	292	168
New Braunfels ISD Learning Center		16	34			59
Randolph Air Force Base	385	304	300	242	175	139
Seguin High School	139	59	34	17	18	13
Tivy High School/Off-campus Kerrville	276	233	232	340	171	159
USAA	289	199	85	104	165	151
Telecourses	1,287	1,333	1,349	1,659	1,576	1,629
Internet Courses	9	45	131	217	298	557
Contract Training				30		65
<b>TOTAL OFF-CAMPUS</b>	<b>3,722</b>	<b>3,160</b>	<b>2,687</b>	<b>3,196</b>	<b>2,971</b>	<b>3,477</b>
Alamo Heights High School	140	123	143	137	143	116
Bandera High School		13	24	19	45	45
Canyon High School	20	38	52	65	56	20
Center Point High School			13	11	11	9
Edison High School	23	14	42	36	5	6
Harlandale High School	28		17	3	6	
Highlands High School				23	30	30
New Braunfels High School	171	78	176	93	23	22
North East Ind. School District			453	472	545	575
Northside Ind. School District			61	114	99	92
Southwest Winners				3		
Tivy High School Kerrville	151	44	39	57	176	72
SAC	29	43	4	2		
<b>TOTAL DUAL CREDIT</b>	<b>562</b>	<b>353</b>	<b>1,024</b>	<b>1,035</b>	<b>1,139</b>	<b>987</b>
<b>TOTAL</b>	<b>4,284</b>	<b>3,513</b>	<b>3,711</b>	<b>4,231</b>	<b>4,110</b>	<b>4,464</b>

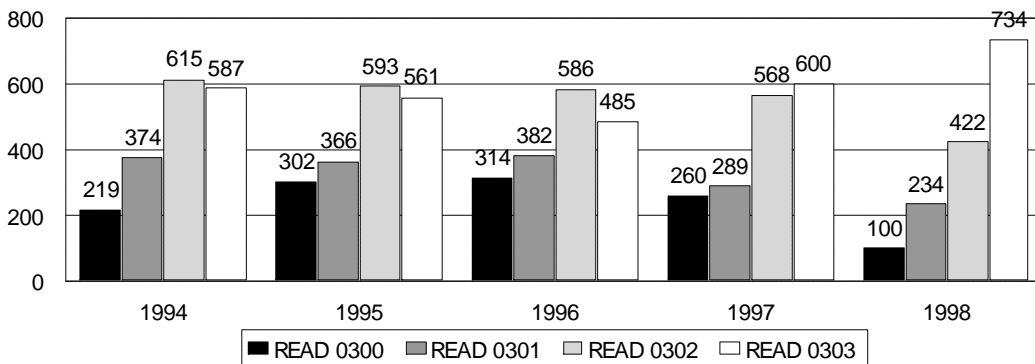
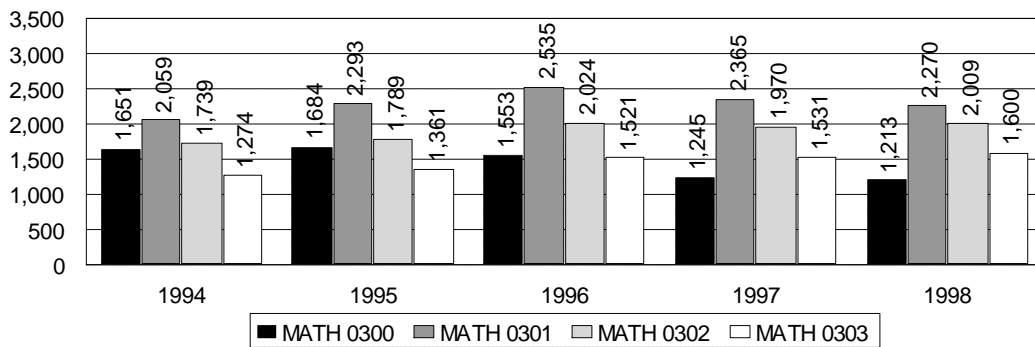
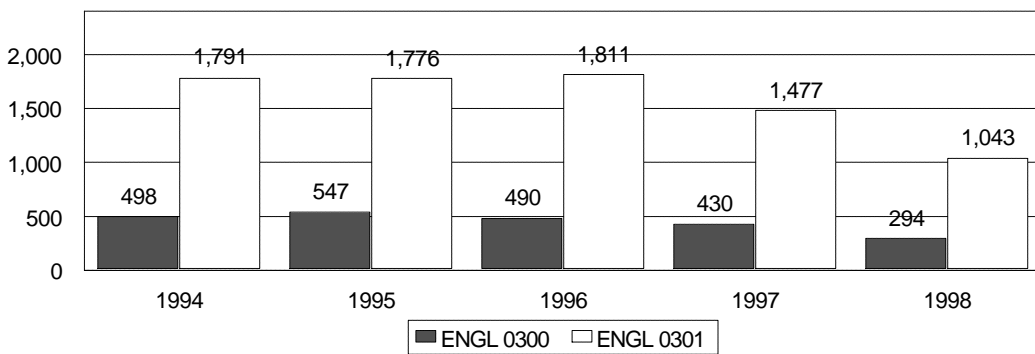
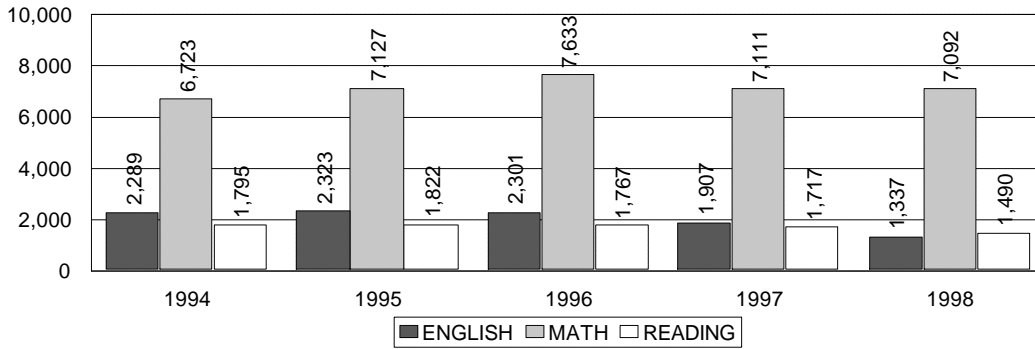
SOURCE: Evening, Weekend &amp; Distance Education Division

**DEVELOPMENTAL EDUCATION  
FALL SEMESTERS 1994-1998**

COURSE		1994	1995	1996	1997	1998
<b>ENGL 0300</b>	ENROLLMENT SECTIONS	498 23	547 25	490 23	430 19	294 16
<b>ENGL 0301</b>	ENROLLMENT SECTIONS	1,791 87	1,776 85	1,811 83	1,477 69	1,043 53
<b>TOTAL</b>	ENROLLMENT SECTIONS	2,289 110	2,323 110	2,301 106	1,907 88	1,337 69
<b>MATH 0300</b>	ENROLLMENT SECTIONS	1,651 54	1,684 65	1,553 62	1,245 50	1,213 51
<b>MATH 0301</b>	ENROLLMENT SECTIONS	2,059 68	2,293 88	2,535 96	2,365 93	2,270 87
<b>MATH 0302</b>	ENROLLMENT SECTIONS	1,739 57	1,789 64	2,024 77	1,970 76	2,009 75
<b>MATH 0303</b>	ENROLLMENT SECTIONS	1,274 44	1,361 48	1,521 57	1,531 57	1,600 58
<b>TOTAL</b>	ENROLLMENT SECTIONS	6,723 223	7,127 265	7,633 292	7,111 276	7,092 271
<b>READ 0300</b>	ENROLLMENT SECTIONS	219 12	302 16	314 18	260 14	100 7
<b>READ 0301</b>	ENROLLMENT SECTIONS	374 21	366 21	382 22	289 16	234 15
<b>READ 0302</b>	ENROLLMENT SECTIONS	615 28	593 28	586 29	568 26	422 21
<b>READ 0303</b>	ENROLLMENT SECTIONS	587 26	561 25	485 24	600 24	734 29
<b>TOTAL</b>	ENROLLMENT SECTIONS	1,795 87	1,822 90	1,767 93	1,717 80	1,490 72
<b>TOTAL</b>	ENROLLMENT SECTIONS	10,807 420	11,272 465	11,701 491	10,735 444	9,919 412

SOURCE: CBM004

### DEVELOPMENTAL EDUCATION FALL SEMESTERS 1994-1998



SOURCE: CBM004

**CONTINUING EDUCATION & WORKFORCE DEVELOPMENT  
ANNUAL REPORT  
1998-1999**

**HIGHLIGHTS**

- ❖ Projected enrollment for the Division: 18,600. 435,213 reimbursable contact hours were reported for the year; tuition revenue also exceeded last year's total at \$ 39,381.
- ❖ The Division marketed the popular Microsoft Certification program to the business community in cooperation with the College's Department of Computer Information System.
- ❖ A formal application was submitted to the Texas Higher Education Coordinating Board to establish the Pharmacy Technician program as a certificate program.
- ❖ The College for Kids program, now in its 16<sup>th</sup> year, enrolled 358 students this year. Basic skills and language development programs served over 1,300 students. These efforts included the Intensive English Institute program which again enrolled over 350 students.
- ❖ The Division secured a \$ 151,000 U.S. Department of Labor grant, in cooperation with the Hispanic Association of Colleges and Universities, to establish a Welfare to Work project. This post employment program will utilize technology-based instruction to include CD-Rom and other self-directed software at the job site.
- ❖ The Texas Higher Education Coordinating Board completed its evaluation of Continuing Education as part of their site visit to San Antonio College. Their final report cited CE as an "outstanding" operation with particular attention given to our work with the business community and our College for Kids program.
- ❖ The Division completed its Program Review in June and received official approval status from the College Program Review Council.
- ❖ The Division is now offering over 100 on-line courses via the Internet through partnership with Education To Go.
- ❖ The Dean of Continuing Education addressed university presidents attending the Latin American University Rectors Conference (June 7-9, 1999) on the role and scope of continuing education units in American colleges and universities.
- ❖ The Division expects to generate \$ 982,050 in tuition and fee revenue for the 1998-99 School year.



**CONTINUING EDUCATION & WORKFORCE DEVELOPMENT  
ANNUAL REPORT  
1998-1999**

**CONTRACT TRAINING**

- ❖ The Division's customized training service was retained by 49 employers during the school year and generated \$126,000 in accounts receivable.
- ❖ The current training contract with the Center for Health Care Services was renewed for the sixth consecutive year in the amount of \$ 52,800.
- ❖ An accelerated technical training program is currently in progress for employees of the Southwestern Bell Corporation. A total of 22 employees entered the 320 hour program to retrain for technical job opportunities within the company.
- ❖ The Division was contracted by Randolph AFB to deliver two emergency medical technician training programs for civilian and enlisted personnel. All program completers applied for the National EMT Registry Examination and attained professional certification.
- ❖ The Division continued to serve State and Municipal entities this year delivering employee training programs to the City Public Service Board (Applied Chemistry, Surveying), Bexar County (Basic Skills), City of San Antonio (Supervisor Management, Communication, Team Building), Edwards Aquifer Authority (Basic Skills). Bexar County Appraisal District (Project Management), San Antonio Water System (Hazardous Material Refresher), Via Metropolitan Transit (Hazardous Material Refresher), City of Kerville (Food Service), and City of Shavano Park (Law Enforcement).

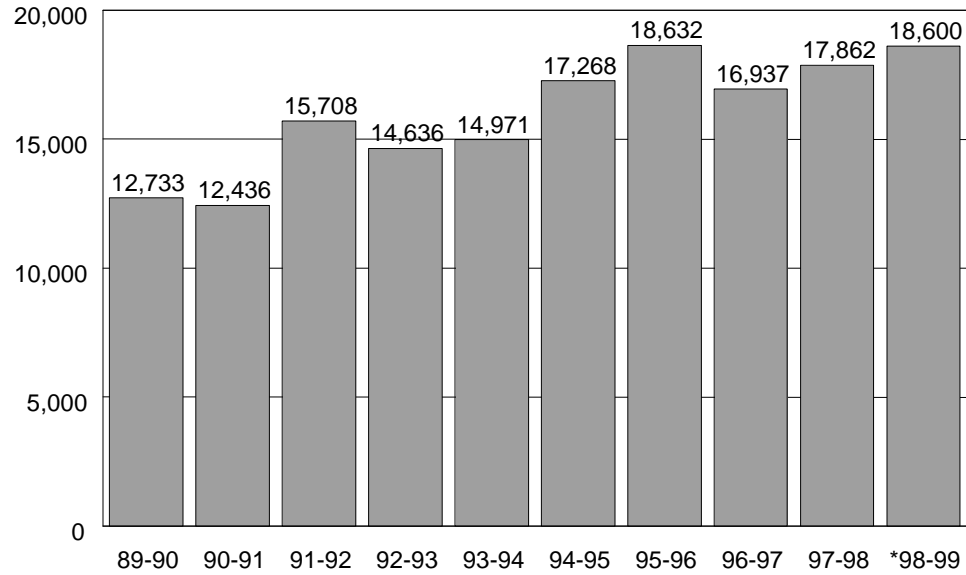
**SIGNIFICANT ACTIVITIES**

- ❖ Programmatic relationships with the Division of Occupational Technical Education continued this year involving the Department of Office Systems Technology, Computer Information Systems, Engineering Technology, and Protective Services.
- ❖ The Scobee Planetarium began a re-engineering process to position it for the future. A new mission statement has emerged, its first Advisory Committee has been organized, and a strategic plan developed to diversify its programs and activities.

**CONTINUING EDUCATION - CONTRACT COMPANIES 1998-1999**

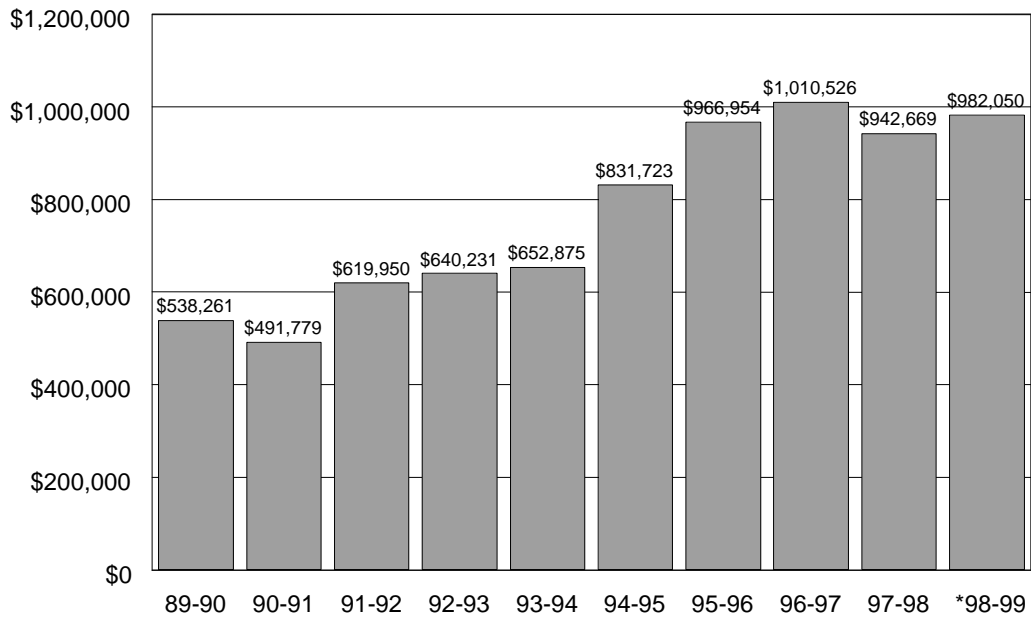
Baker Surveying & Engineering	Kimbrough Oil Service
Baptist Temple Day Care	Kindercare Learning Center
Bexar County Adult Probation	Lackland AFB
Bexar County Appraisal District	Luby's Cafeterias, Inc.
Bexar County Care, Inc.	Northeast I.S.D.
Bexar County Personnel	Omne Mental Health Services
ButterKrust Bakery, Inc.	OMNI Insurance Group
Caldwell County Sheriff's Department	Pik Nik Foods
Catholic Campus Ministry Office	Plumbers and Pipe Fitters
City of Kerrville	Randolph Air Force Base
City of San Antonio	River City EMS
City of Shavano Park	San Antonio Water System
Council of Research	Sea World
Country Home Learning Center	Southwestern Bell Telephone
Creative Minds Unlimited	St. Peter's St. Joseph's
Edwards Aquifer Authority	The Center for Health Care Services
EG&G Kelly Distribution Center	TMSSC
George Muery Services	UNITEC
Gillespie County EMS	University Health System
H.E.B. Risk Management	University of Texas Health System
Handy Andy	USAA
Harris Corporation	VIA Metropolitan Transit
KCI	Visiting Nurse Assoc. & Hospice
KEI Consultants	YMCA

**CONTINUING EDUCATION  
TOTAL ENROLLMENT 1989-1990 TO 1998-1999  
(reimbursable & nonreimbursable courses)**



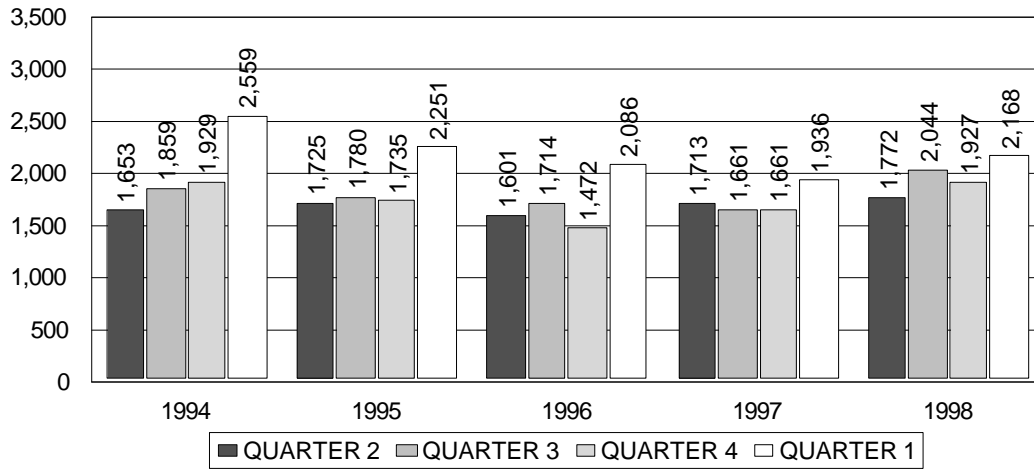
SOURCE: Division of Continuing and Workforce Development  
\*1998-1999 figures are projected.

**TUITION/FEE REVENUE 1989-1990 TO 1998-1999  
(reimbursable & nonreimbursable courses)**

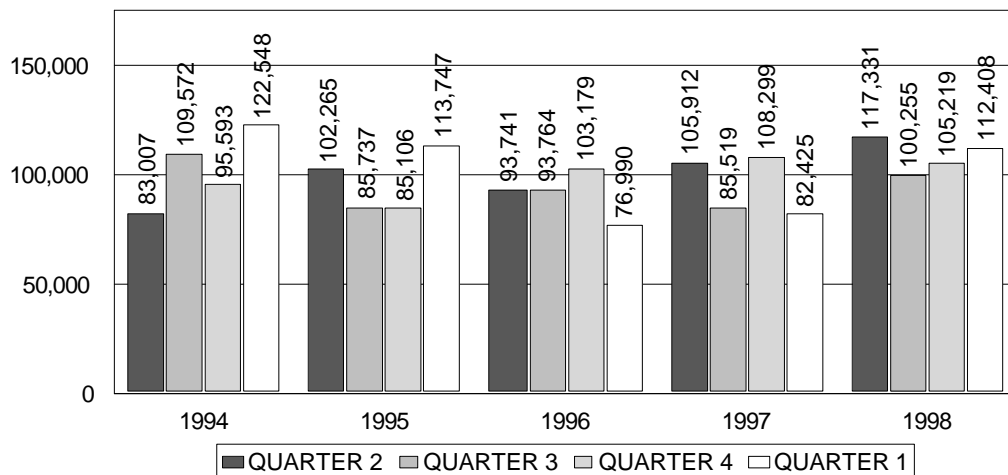


SOURCE: Division of Continuing Education & Workforce Development  
\*1998-1999 figures are projected.

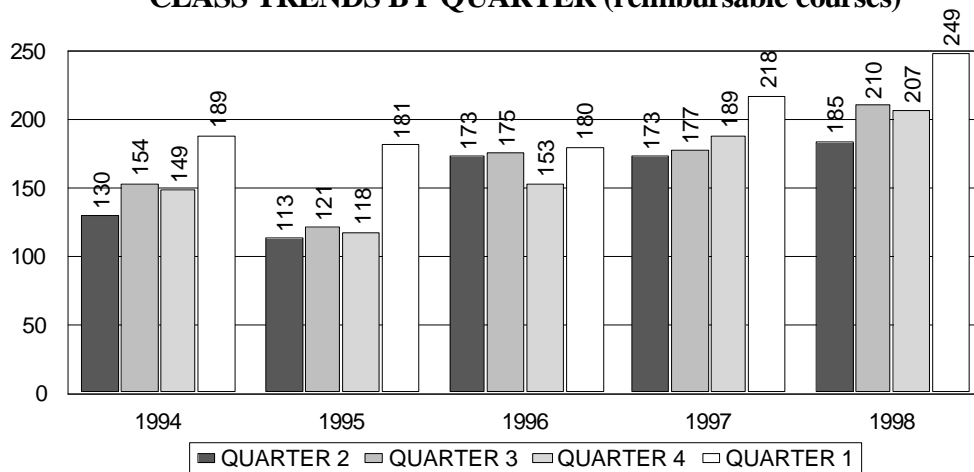
**CONTINUING EDUCATION 1994-1998**  
**HEADCOUNT TRENDS BY QUARTER (reimbursable courses)**



**CONTACT HOUR TRENDS BY QUARTER (reimbursable courses)**



**CLASS TRENDS BY QUARTER (reimbursable courses)**



SOURCE: CBM00C Summary Report

**CONTENTS – PERSONNEL PROFILE**

FACULTY

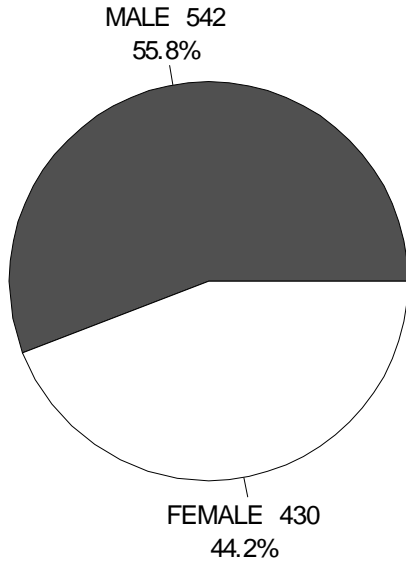
Faculty Profile (Gender, Ethnicity, Age, Highest Degree Earned), Fall 1998 ..... 48  
Full-Time Faculty, Fall 1998 ..... 49  
Faculty Rank, Fall 1998..... 49

FULL-TIME EMPLOYEES

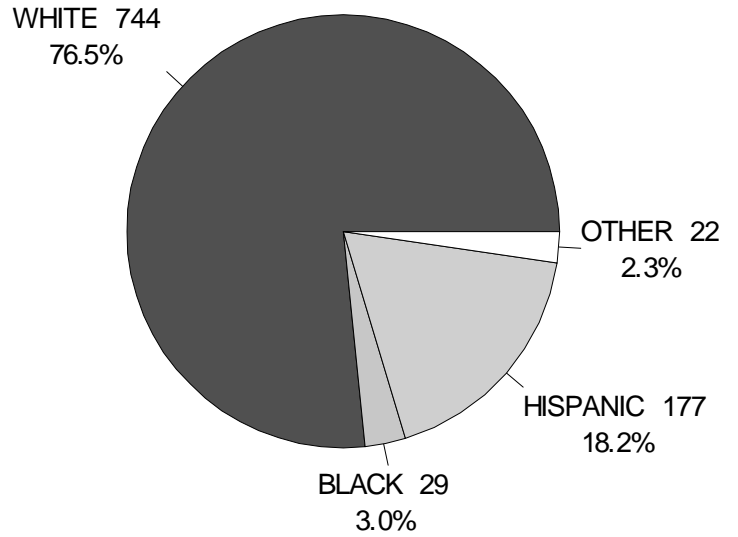
Full-Time Employee Profile, Fall 1998..... 50  
By Gender & Classification, Fall 1998 ..... 50  
By Ethnicity & Classification, Fall 1998..... 50

**FACULTY PROFILE – FALL 1998**  
**972 TOTAL FACULTY**

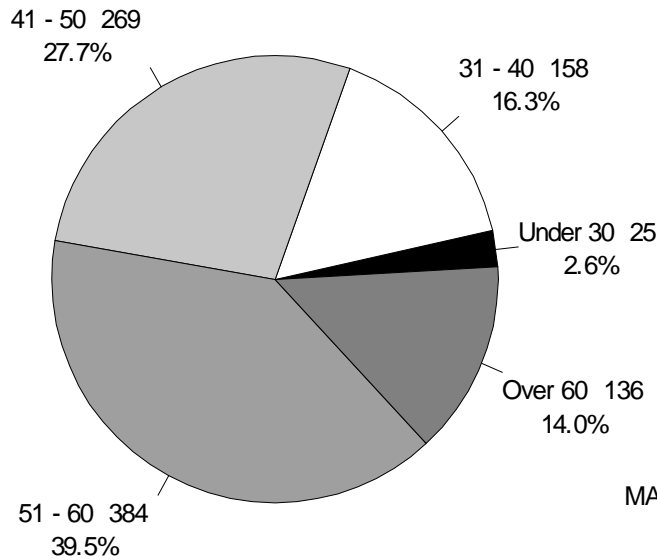
**GENDER**



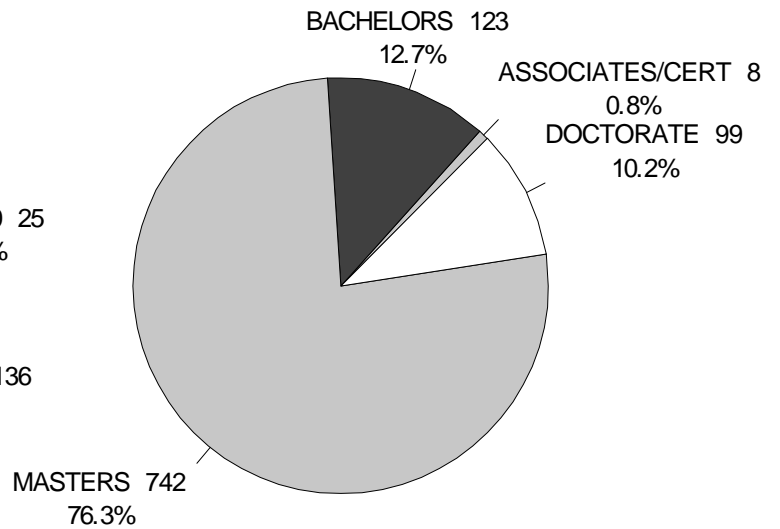
**ETHNICITY**



**AGE**



**HIGHEST DEGREE EARNED**



SOURCE: CBM008, 10/23/98

Includes both tenure-track and adjunct faculty

**FULL-TIME FACULTY – FALL 1998**

	<b>WHITE</b>	<b>BLACK</b>	<b>HISPANIC</b>	<b>OTHER</b>	<b>TOTAL</b>
<b>FEMALE</b>	137 32.2%	13 3.1%	39 9.2%	2 0.5%	191 44.8%
<b>MALE</b>	178 41.8%	6 1.4%	42 9.9%	9 2.1%	235 55.2%
<b>TOTAL</b>	315 73.9%	19 4.5%	81 19.0%	11 2.6%	426 100.0%

SOURCE: HFA945, 07/09/99

Note: Percents are percents of total

**FACULTY RANK – FALL 1998**

<b>RANK</b>	<b>NUMBER</b>	<b>PERCENT</b>
<b>PROFESSOR</b>	135	13.9%
<b>ASSOCIATE PROFESSOR</b>	64	6.6%
<b>ASSISTANT PROFESSOR</b>	52	5.3%
<b>INSTRUCTOR</b>	116	11.9%
<b>ADJUNCT FACULTY</b>	605	62.2%
<b>TOTAL</b>	972	100.0%

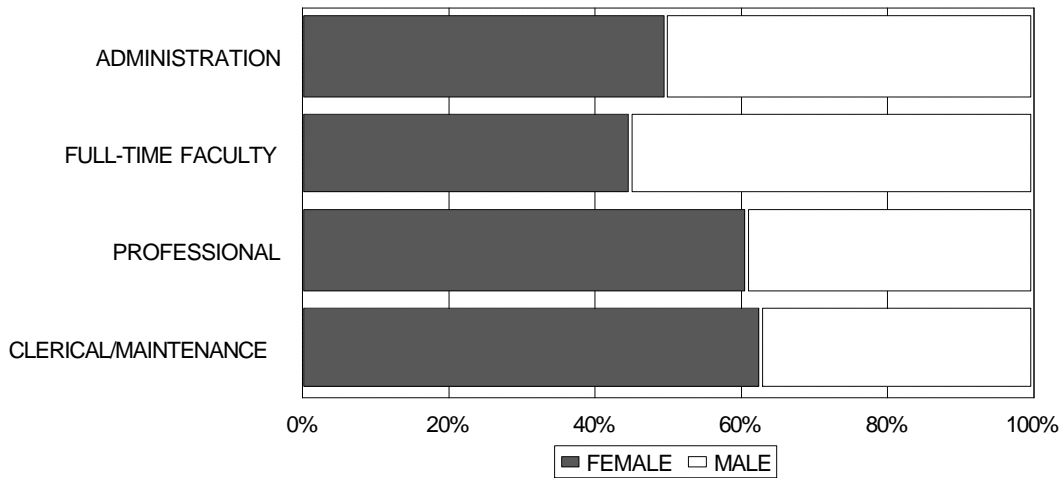
SOURCE: CBM008, 10/23/98

Includes both tenure-track and adjunct faculty

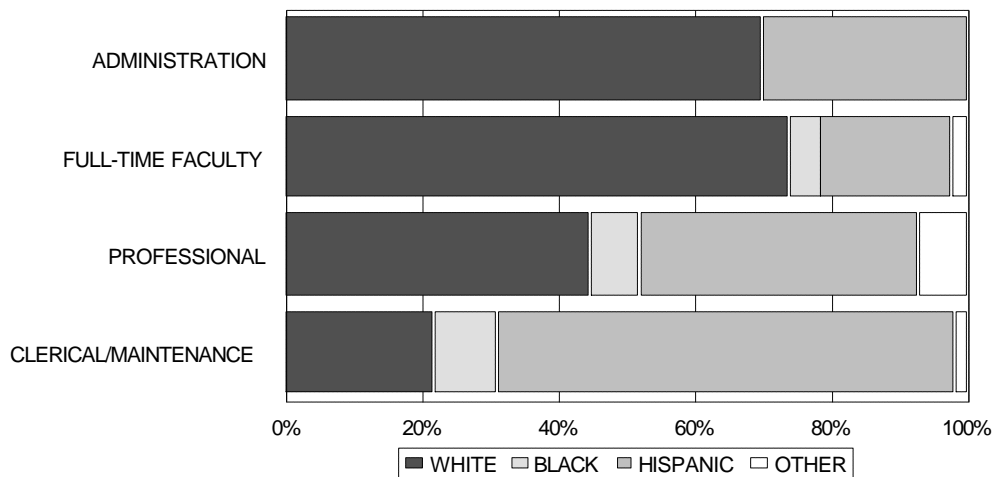
**FULL-TIME EMPLOYEE PROFILE – GENDER & ETHNICITY FALL 1998**

TYPE	WHITE	BLACK	HISPANIC	OTHER	FEMALE	MALE	TOTAL
<b>Administrators</b>	7 70.0%	0 0.0%	3 30.0%	0 0.0%	5 50.0%	5 50.0%	10 100%
<b>Tech/Clerical/ Maintenance</b>	67 22.0%	27 8.9%	205 67.2%	6 2.0%	192 63.0%	113 37.0%	305 100%
<b>Full-time Faculty</b>	315 73.9%	19 4.5%	81 19.0%	11 2.6%	191 44.8%	235 55.2%	426 100%
<b>Professional</b>	25 44.6%	4 7.1%	23 41.1%	4 7.1%	34 60.7%	22 39.3%	56 100%
<b>TOTAL</b>	414 51.9%	50 6.3%	312 39.1%	21 2.6%	422 52.9%	375 47.1%	797 100%

**EMPLOYMENT BY GENDER & CLASSIFICATION FALL 1998**



**EMPLOYMENT BY ETHNICITY & CLASSIFICATION FALL 1998**



SOURCE: HFA945, 7/9/99



CONTENTS – FINANCIAL PROFILE

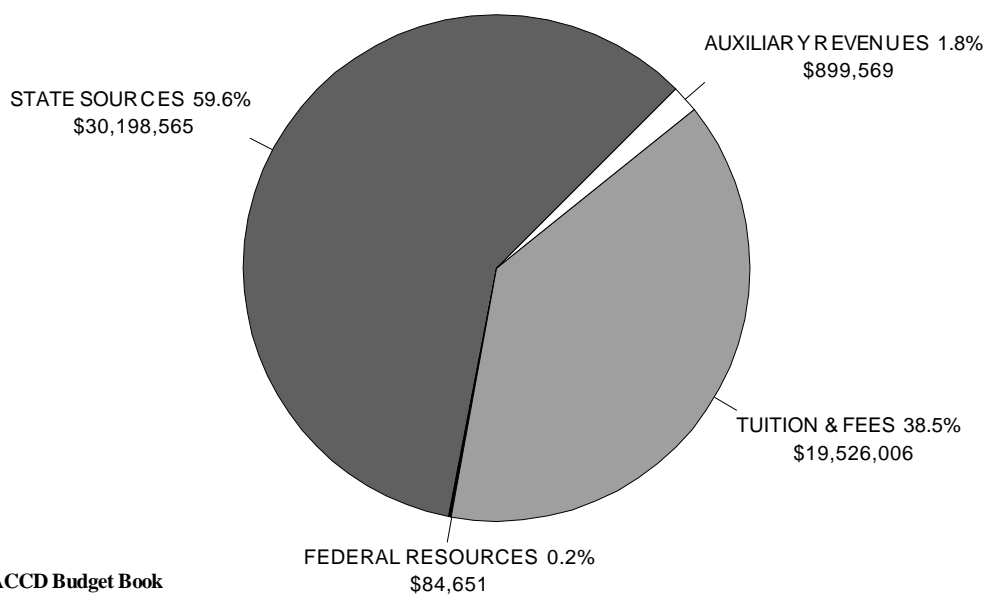
Tuition and Fees 1998-1999 .....52  
Base Revenues 1998-1999 .....52  
Summary of Revenue for 1998-1999 ..... 53  
Summary of Expenditures for 1998-1999 ..... 53

ACCD 1998-1999 TUITION & FEES \*

SEMESTER HOURS TAKEN	TEXAS RESIDENTS				NON-TEXAS RESIDENT/INTERNAT'L STUDENTS	
	IN-DISTRICT		OUT-OF-DISTRICT		TUITION	GEN FEE
	TUITION	GEN FEE	TUITION	GEN FEE		
1 - 6	\$120	\$60	\$230	\$60	\$460	\$60
7	168	65	322	65	644	65
8	192	65	368	65	736	65
9	216	65	414	65	828	65
10	240	65	460	65	920	65
11	264	65	506	65	1012	65
12	288	65	552	65	1104	65
13	312	65	598	65	1196	65
14	336	65	644	65	1288	65
15	360	65	690	65	1380	65
16	384	65	736	65	1472	65
17	408	65	782	65	1564	65
18	432	65	828	65	1656	65
19	456	65	874	65	1748	65
20	480	65	920	65	1840	65
21	504	65	966	65	1932	65

\*As of Fall 1998 Semester

1998-1999 SAN ANTONIO COLLEGE BASE REVENUES



SOURCE: 1998-99 ACCD Budget Book

## SUMMARY OF REVENUE FOR 1998-1999

<b>SAN ANTONIO COLLEGE REVENUES</b>	
<b>State Sources</b>	<b>\$30,198,565</b>
<b>Federal Sources</b>	<b>\$84,651</b>
<b>Tuition</b>	<b>\$13,121,495</b>
<b>Lab &amp; Other Fees</b>	<b>3,045,376</b>
<b>General Fees</b>	<b>3,359,135</b>
<b>Total Tuition and Fees</b>	<b>\$19,526,006</b>
<b>Other Income</b>	<b>\$12,000</b>
<b>Total Educational &amp; General Revenue</b>	<b>\$49,821,222</b>
<b>Auxiliary Enterprises</b>	<b>\$899,569</b>
<b>GRAND TOTAL REVENUES</b>	<b>\$50,720,791</b>

SOURCE: 1998-99 ACCD Budget Book

## SUMMARY OF EXPENDITURES FOR 1998-1999

<b>SAN ANTONIO COLLEGE EXPENDITURES</b>	
<b>EDUCATIONAL AND GENERAL:</b>	
<b>Instruction</b>	<b>\$36,009,773</b>
<b>Public Service</b>	<b>156,685</b>
<b>Academic Support</b>	<b>4,331,593</b>
<b>Student Services</b>	<b>4,538,921</b>
<b>Institutional Support</b>	<b>4,164,444</b>
<b>Operation and Maintenance of Plant</b>	<b>4,701,593</b>
<b>Scholarships and Fellowships</b>	<b>1,002,485</b>
<b>Lapsed Salaries Adjustment</b>	<b>0</b>
<b>Total Educational &amp; General Expenditures</b>	<b>\$54,905,494</b>
<b>Auxiliary Enterprise Expenditures</b>	<b>\$328,713</b>
<b>MANDATORY TRANSFERS FOR:</b>	
<b>Texas Public Education Grants</b>	<b>723,158</b>
<b>Supplemental Education Opportunity Grants</b>	<b>229,039</b>
<b>TOTAL UNRESTRICTED CURRENT FUNDS</b>	<b>\$56,186,404</b>
<b>TOTAL EXPENDITURES AND TRANSFERS</b>	<b>\$56,186,404</b>

SOURCE: 1998-99 ACCD Budget Allocations