
San Antonio College

1999-2000 FACT BOOK

Prepared by Office of
Institutional Effectiveness

SEPTEMBER 2000

SAC FACT BOOK CONTENTS

Introduction	v
Acknowledgements.....	vi
COLLEGE PROFILE	1
OVERVIEW	
History.....	2
Mission Statement	3
Outstanding Former Students	4
Certificate & Degree Programs.....	5
Accreditation and Affiliations	8
ORGANIZATIONAL CHARTS	
San Antonio College.....	9
Arts & Sciences; Occupational & Technical Education; Continuing Education & Workforce Development ..	10
Evening, Weekend & Distance Education; Student Services; Learning Resource Center	11
DIVISIONS	
Arts & Sciences	12
Occupational & Technical Education.....	12
Continuing Education and Workforce Development.....	13
Evening, Weekend & Distance Education.....	13
Student Services	13
Learning Resource Center	14
INSTITUTIONAL RESOURCES	
Instructional Technologies.....	15
Learning Resource Center	17
Student Learning Assistance Center	18
TRANSFER	
Tech Prep	20
Transfer Resource and Advisement Center	20
2 + 2 Agreements with Four-year Institutions.....	20
STUDENT PROFILE	22
GENERAL INFORMATION	
Gender, Ethnicity, Age, Major, Hours Enrolled, Day vs. Evening	23
Top Ten:	
Academic Majors	24
Vocational Majors	24
Feeder High Schools	24
Zip Codes of Residence	25
Counties of Residence	25
States of Residence	25
Student Objective in Attending San Antonio College	26
Intended Duration of Enrollment.....	26
Previous College Experience	26
Student Employment Status	26
Financial Aid and Scholarship Awards	27

ACADEMIC ACHIEVEMENT

Grade Distribution, Fall 1999.....	28
Grade Distribution Trends, Fall Semesters 1995-1999.....	28
Fall to Fall Retention by Ethnicity, 1992-1993 to 1997-1998	29
Retention of First-Time, Full-Time Freshmen by Ethnicity, Fall 1998	29
Graduation Degrees & Certificates Awarded, 1998-1999	30
Graduation Degrees by Ethnicity, 1998-1999	30
Graduation Degrees & Certificates Awarded, 1994-1995 to 1998-1999.....	30
TASP Results by Institution, 1998-1999.....	31
TASP Pass Rates by Ethnicity, 1998-1999	31
Initial Pass Rates by Test Route, 1998-1999	31

ENROLLMENT TRENDS32

Credit Programs:

Fall Semesters 1990-1999 and Spring Semesters 1991-2000	33
Summer I Session 1991-2000 & Summer II Sessions 1991-1999.....	34
By Classification Fall Semesters 1995-1999 (Summary Statistics)	35
By Gender.....	36
By Ethnicity	36
By Division	37
Part-Time vs. Full-Time	37
Day vs. Evening.....	38
By Residency.....	38
By Age	39
First-Time Students	39
Contact Hours, Fall & Spring Semesters 1995-2000	40
Contact Hours, Summers I & II 1996-2000	40

Distance Education:

Highlights	41
Enrollment, Fall Semesters 1996-1999	42

Developmental Education:

Enrollment Fall Semesters 1995-1999	44
Trends in Developmental English.....	45
Trends in Developmental Math	45
Trends in Developmental Reading	45

Continuing Education:

Highlights	46
Contracts, Partnerships	47
Contract Companies	48
Total Enrollment 1990-1991 to 1999-2000.....	49
Tuition/Fee Revenue 1990-1991 to 1999-2000.....	49
Reimbursable Headcount by Quarter 1995-1999.....	50
Reimbursable Contact Hours by Quarter 1995-1999	50
Reimbursable Classes by Quarter 1995-1999	50

PERSONNEL PROFILE	51
FACULTY	
Faculty Profile (Gender, Ethnicity, Age, Highest Degree Earned), Fall 1999	52
Full-Time Faculty, Fall 1999	53
Faculty Rank, Fall 1999	53
FULL-TIME EMPLOYEES	
Full-Time Employee Profile, Fall 1999	54
By Gender & Classification, Fall 1999	54
By Ethnicity & Classification, Fall 1999	54
FINANCIAL PROFILE.....	55
Tuition and Fees 1999-2000.....	56
Base Revenues 1999-2000	56
Summary of Revenue for 1999-2000	57
Summary of Expenditures for 1999-2000.....	57

The San Antonio College Fact Book provides general statistical information about the College which may be useful to those engaged in planning, preparing reports, writing grant proposals, or other endeavors within the College.

It is important for the reader to be aware that data presented in this publication may differ slightly from statistics found in other College and District reports. Such variances may result from differences in the source of information used, the date on which the report was generated, or the reporting period included in the report. For these reasons, the source of the information in each table and graph is cited. Trends should be tracked using identical sources each semester.

Sonia V. Valdez
Statistical Research Specialist, Senior

Office of Institutional Effectiveness
San Antonio College
1300 San Pedro Avenue
San Antonio, Texas 78212
(210) 733-2346

ACKNOWLEDGEMENTS

Dr. Vern Loland, President, San Antonio College
Dr. Robert Zeigler, Executive Vice President, San Antonio College
Dr. Alice Cook, Dean of Learning Resources
Ruben Flores, Dean of Evening, Weekend and Distance Education
Dr. Margaret Hyde, Dean of Arts and Sciences
Betty J. Larson, Dean of Occupational and Technical Education
Dr. Luciano Salinas, Dean of Student Services
Ruben Torres, Dean of Continuing Education and Workforce Development
Dr. Emily Dibble, Executive Dean of Institutional Effectiveness
Bunker Hill Community College, Boston
Tomas Campos, Director of Student Financial Services
Susan B. Espinoza, Director of Resource and College Development
Dr. John Hammond, Director of Community and Public Relations
David E. Mrizek, Director of Institutional Planning and Budget
Helen Torres, Director of Distance Education
Dr. Charlotte Wolf, Director of Instructional Technologies
Yolanda Cano, Associate Director of Residency and Reports
Donna Deming, Associate Director of Records
Dave Elder, Coordinator of Student Learning Assistance Center
Ed Anderson, Media Specialist, Audiovisual Graphics
Rose Marie Gonzales, Transfer Center
Leopoldo Gonzalez, Tech Prep
Tim Rockey, Continuing Education and Workforce Development
Della Savage, Records & Reports
Terri Smith, Records & Reports
Thomas Currie, Production Control Analyst, ACCD Information Systems
Betty Munson, Programmer, ACCD Information Systems
Steve Castañeda, Texas Higher Education Coordinating Board



*Special thanks to San Antonio College Instructional Technologies for assistance in printing text
~ Original Cover design by Diane Henry ~*

CONTENTS – COLLEGE PROFILE

OVERVIEW

History2

Mission Statement3

Outstanding Former Students4

Certificate & Degree Programs.....5

Accreditation and Affiliations8

ORGANIZATIONAL CHARTS

San Antonio College9

Arts & Sciences; Occupational & Technical Education; Continuing Education & Workforce Development ..10

Evening, Weekend & Distance Education; Student Services; Learning Resource Center 11

DIVISIONS

Arts & Sciences12

Occupational & Technical Education.....12

Continuing Education and Workforce Development.....13

Evening, Weekend & Distance Education.....13

Student Services13

Learning Resource Center14

INSTITUTIONAL RESOURCES

Instructional Technologies15

Learning Resource Center17

Student Learning Assistance Center18

TRANSFER

Tech Prep20

Transfer Resource and Advisement Center20

2 + 2 Agreements with Four-year Institutions.....20

HISTORY

San Antonio College was established as University Junior College in September 1925, under the auspices of the University of Texas. The following year control of the college was transferred to the San Antonio Independent School District and the name was changed to San Antonio Junior College. Following passage of state legislation authorizing junior college districts, the San Antonio Union Junior College District was formed in 1945 and in 1946 assumed control of San Antonio Junior College and its sister college, St. Philip's Junior College. In 1948, San Antonio Junior College's name was changed to San Antonio College, and in 1951, the college was moved to its present location on San Pedro Avenue. Five hundred students were enrolled at that time. The Southern Association of Colleges and Schools granted accreditation to the college in 1955.

In the late 1960s San Antonio College became a comprehensive community college by expanding offerings in occupational and technical courses and by assuming the San Antonio 65

Independent School District's continuing education program. The name of the college district was changed to San Antonio Community College District in 1978 and in 1982 the district was renamed the Alamo Community College District.

In support of the mission of the Alamo Community College District, San Antonio College responds to Bexar County's diverse community by providing high-quality general education, liberal arts and sciences, career education, continuing education and developmental education. The college has an average semester enrollment of 21,000 credit students and an average annual enrollment of 15,000 other-than-credit students. San Antonio College is the largest single-campus community college in Texas and one of the largest in the United States.

MISSION STATEMENT

San Antonio College – responsive education through excellence, accessibility and diversity. San Antonio College is a public community college, which provides for and supports the educational and lifelong learning needs of a multicultural community. As a leader in education, San Antonio College is committed to excellence in helping students reach their full potential by developing their academic competencies, critical thinking skills, communication proficiency, civic responsibility and global awareness.

San Antonio College fulfills its mission by offering the following:

- ❖ Transfer education designed to provide students with the first two years of the bachelor's degree.
- ❖ General education courses in the liberal arts and sciences to support all college degree programs.
- ❖ Career preparation provided through a wide range of programs to prepare students for immediate employment.
- ❖ Developmental studies for students needing to bring their basic skills to a level appropriate for college work.
- ❖ Continuing education to offer a variety of training, licensure and professional programs.
- ❖ Academic support services that include a comprehensive learning resource center and basic skills activities that complement instruction.
- ❖ Student support services to provide assessment, advising, counseling, tutoring, financial assistance, and social and cultural activities for all students, including those with special needs.
- ❖ Promotion of cross-cultural understanding and appreciation through instructional and social activities that contribute to cultural awareness and interaction.
- ❖ Involvement of business, industry and professional groups in planning and revising educational programs to meet workforce needs.
- ❖ An environment conducive to learning through an attractive physical campus and wellness- oriented programs and services.
- ❖ Continuous assessment of programs and services and the utilization of results for improvement.
- ❖ Operation of the college within available fiscal resources to provide accountability to taxpayers of the Alamo Community College District.

OUTSTANDING FORMER STUDENTS

Congressman Henry B. Gonzalez	1982
Judge Blair Reeves	1983
Congressman Albert Bustamante.....	1984
Dr. William Kirby (Former Commissioner Of Education)	1985
Capt. Larry Person (Navy Test Pilot, Former Blue Angels Commander).....	1986
Lisa Brown (Archaeologist).....	1987-88
Judge Edward Prado	1987-88
Dr. Jerome Weynand (Former Executive Director Baumberger Endowment Fund).....	1987-88
James R. Vasquez (Former Edgewood School District Superintendent).....	1988-89
Judge Sarah Garrahan	1988-89
Frank Gonzalez (Oceanographer).....	1989-90
Nancy Klepper (Educator)	1989-90
Diane Gonzales (Journalist)	1990-91
Bill Hayden (Founder/CEO Compuadd)	1990-91
Jesse Trevino (Artist).....	1991-92
Patsy Torres (Entertainer)	1992-93
Dr. Felix D. Almaraz (Columnist And Historian)	1993-94
William Sinkin (Banker)	1993-94
Dr. Judith Ann Loredo (Educator).....	1994-95
Steven C. Hilbig (Bexar County District Attorney)	1994-95
Dr. Robert L. Jimenez (Psychiatrist).....	1995-96
Dr. Leo Sayavedra (Educator).....	1995-96
Francis R. Scobee (Challenger Astronaut).....	1995-96
Tino Duran (Publisher)	1996-97
Al A. Philippus (San Antonio Chief Of Police)	1996-97
Dr. Cynthia Gambell Broderick (Educator)	1997-98
Dr. Jesse T. Zapata (Educator)	1997-98
Dr. James V. McLean (Veterinarian)	1998-99
Marinella Garcia-Murillo (Community Relations Specialist)	1998-99
Martin Basaldua, M. D.	1999-2000
Ciro Rodriguez.....	1999-2000

CERTIFICATE AND DEGREE PROGRAMS

ARTS & SCIENCES

AA DEGREES: ASSOCIATE IN ARTS IN LIBERAL ARTS
 ASSOCIATE IN ARTS IN ARCHITECTURE
 ASSOCIATE IN ARTS IN FINE ARTS
 ASSOCIATE IN ARTS IN CRIMINAL JUSTICE
 ASSOCIATE IN ARTS IN DRAMA
 ASSOCIATE IN ARTS IN GEOGRAPHIC INFORMATION SYSTEMS
 ASSOCIATE IN ARTS IN AMERICAN SIGN LANGUAGE
 ASSOCIATE IN ARTS IN PSYCHOLOGY
 ASSOCIATE IN ARTS IN SOCIAL SERVICES
 ASSOCIATE IN ARTS IN SPEECH

AS DEGREES: ASSOCIATE IN SCIENCE
 ASSOCIATE IN SCIENCE IN ENGINEERING

DISCIPLINES:

Accounting	Geographic Information Systems
Architecture	Geography
Art	Geology
Astronomy	Government
Biological Sciences	Graphic Art
Business Administration	History
Chemistry	Humanities
Computer Science	Interdisciplinary Studies
Drama	Journalism
Economics	Kinesiology/Physical Education
Education	Mathematics
Engineering	Mental Health Technology
English	Music
English as a Second Language	Philosophy
Foreign Languages	Photography
American Sign Language	Physics
French	Psychology
German	Reading/Study Skills
Japanese	Social Work
Latin	Sociology
Spanish	Speech

CERTIFICATE AND DEGREE PROGRAMS

OCCUPATIONAL TECHNICAL

DEPARTMENT	PROGRAM	AWARD
ALLIED HEALTH	Dental Assisting Technology	AAS, CERT
	Medical Assisting Technology	AAS, CERT
	Medical Office Adm. Assistant	CERT
	Mortuary Science	AAS
CHILD DEVELOPMENT	Child Development	AAS, CERT
	Teacher Assistant	CERT
COMPUTER INFORMATION SYSTEMS TECHNOLOGY	Microcomputer Technician	CERT
	Computer Help Desk Specialist	AAS
	Computer Help Desk Technician	CERT
	Computer Programming	AAS
	Computer Programmer	CERT
	Microcomputer Specialist	AAS
	Network Administrator	AAS
Network Technician	CERT	
OFFICE SYSTEMS TECH./ COURT REPORTING	Accounting Technology	AAS, CERT
	Court Reporting	CERT
	Computer-Aided Transcription Technology	AAS
	Court Reporting – Rapid Text Entry	CERT
	Microcomputer/Data Entry Operations	CERT
	Office Systems Specialist	AAS
	Office Systems Technician	CERT
Records Management	AAS, CERT	
ENGINEERING TECHNOLOGY	Computer-Aided Drafting-General Option	AAS
	Computer-Aided Drafting-Engineering Option	AAS
	Computer-Aided Drafting Operations	CERT
	Electronics Technology	AAS, CERT
	Engineering Technology	AAS
	Geographic Info Systems	CERT
	Surveying Engineering Technology	CERT
Occupational Safety & Health Technology	AAS, CERT	
INTERPRETER TRAINING/AMERICAN SIGN LANGUAGE	Interpreting for the Deaf	AAS
	American Sign Language-Deaf Support Specialist Option	AAS
MANAGEMENT	Banking	AAS
	Financial Management	AAS, CERT
	Labor Studies	CERT
	Legal Assisting	AAS

DEPARTMENT	PROGRAM	AWARD
	Business Management	AAS, CERT
	Operations Management	AAS
	Public Administration	AAS
	Real Estate Management	AAS
	Small Business	CERT
RADIO-TV-FILM	Radio-Television-Film	AAS
NURSING	Nursing (Generic)	AAS
	Nursing (Career Mobility)	AAS
PROTECTIVE SERVICES	Criminal Justice-Correctional Science	AAS, CERT
	Criminal Justice-Law Enforcement	AAS, CERT
	Emergency Medical Services	AAS, CERT
	Fire Fighter (Basic)	CERT
	Fire Science	AAS
	Fire and Arson Investigation	AAS, CERT
	Fire Inspector	CERT
PSYCHOLOGY	Mental Health Technology-Substance Abuse Drug & Alcohol Couns. Cert. Prep.	AAS CERT
VISUAL ARTS	Graphic Arts-Electronic Graphics Option Graphic Arts-Print Graphics Option	AAS AAS

ACCREDITATION & AFFILIATIONS

San Antonio College is accredited by the Commission on Colleges of the Southern Association of Colleges and Schools to award associate degrees.

The Mortuary Science Program is accredited by the American Board of Funeral Service Education.

The program in Dental Assisting is accredited by the Commission on Dental Accreditation of the American Dental Association, a specialized accrediting body recognized by the Council on Postsecondary Accreditation and by the United States Department of Education.

The Medical Assisting Technology Program is accredited by the Commission on Accreditation of Allied Health Education programs (CAAHEP), on recommendation of the Committee on Accreditation for Medical Assistant Education.

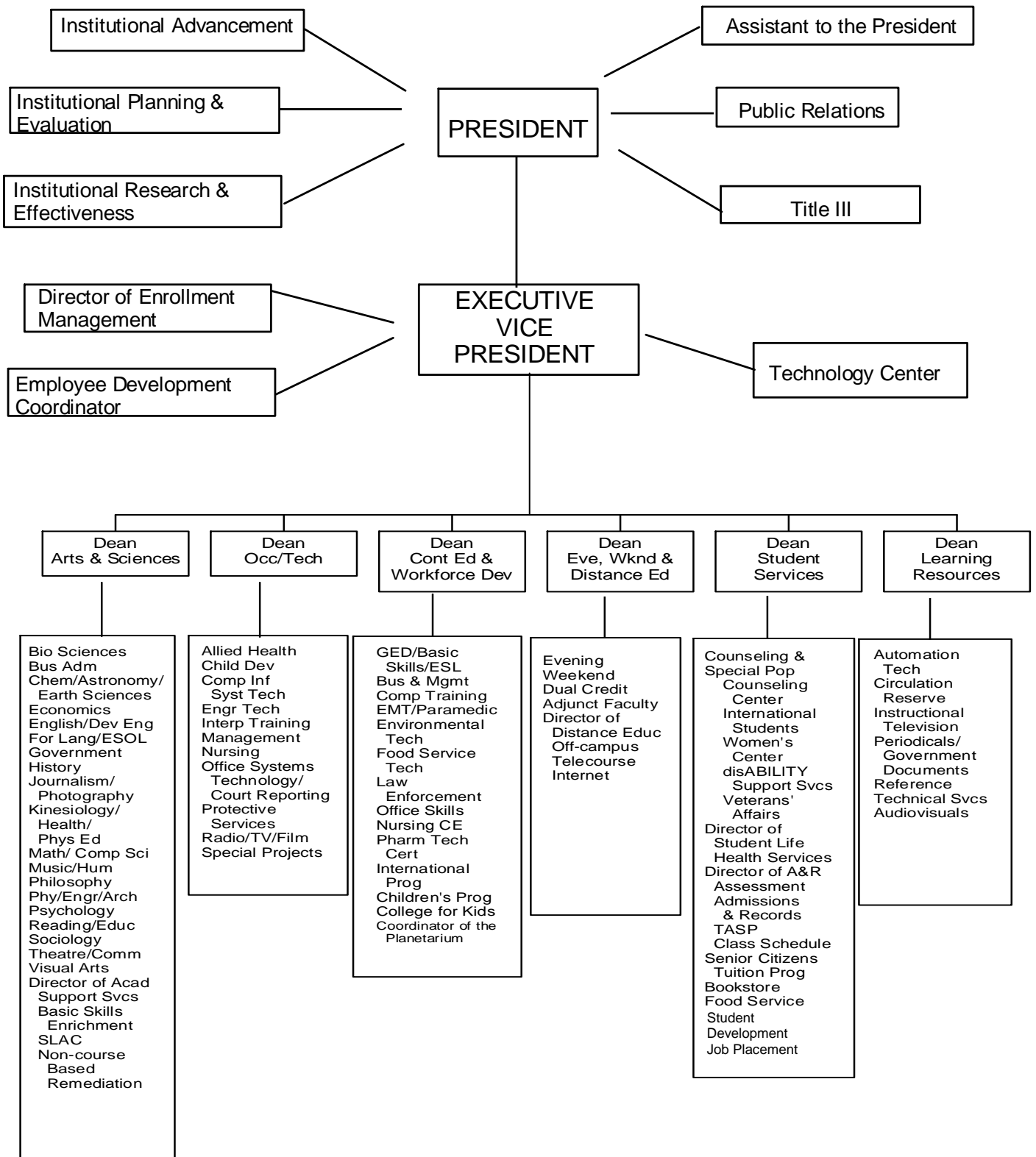
The Department of Nursing is accredited by the National League for Nursing.

The Child Development Program is accredited by the National Association for the Education of Young Children (NAEYC).

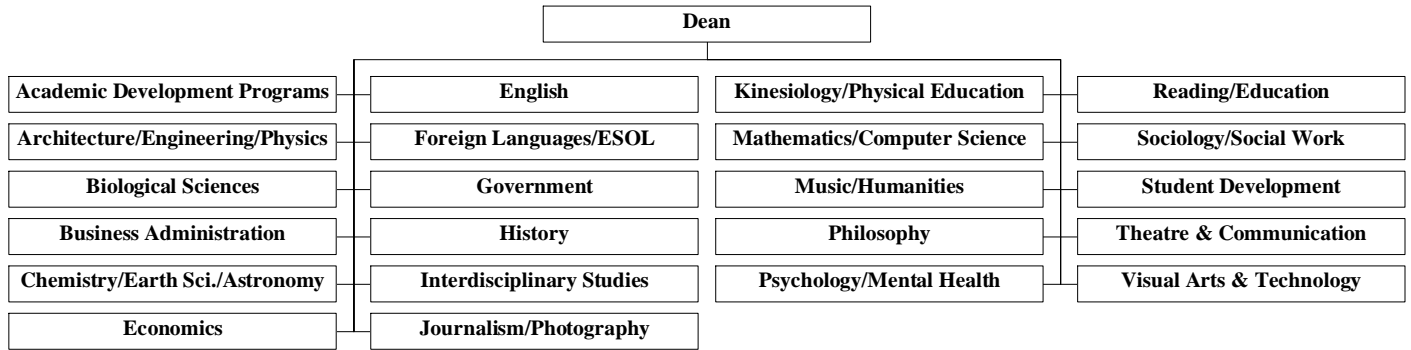
The Fire Science Program is the first program to be accredited by the International Fire Service Accreditation Congress.

Students who wish to view the school's accreditation and licensing bodies documentation may inquire at the reserve desk of the Learning Resource Center in the Moody Learning Center.

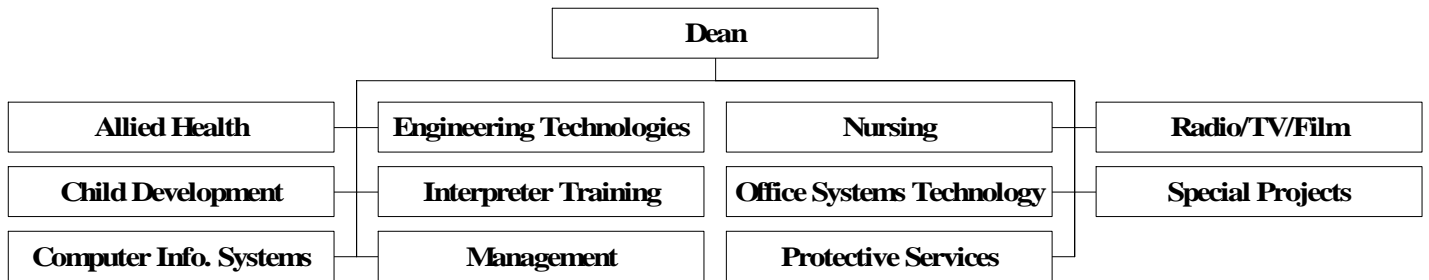
SAN ANTONIO COLLEGE 1999-2000 ORGANIZATIONAL CHART



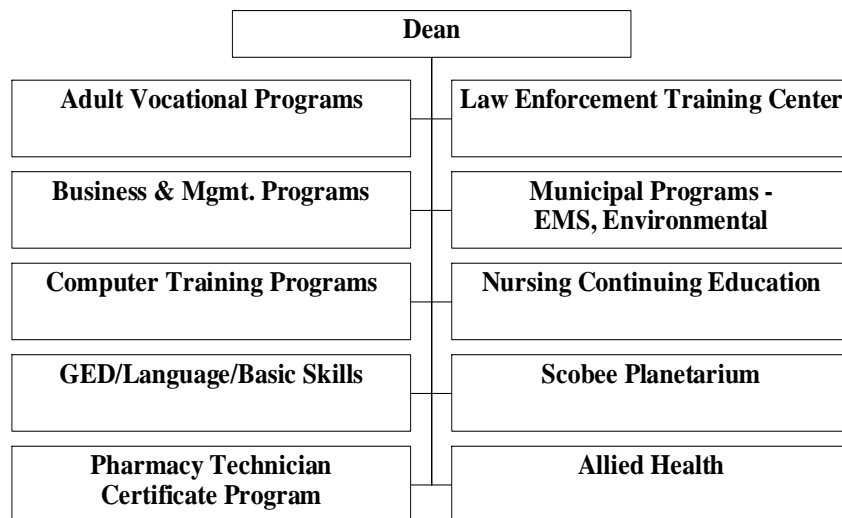
ARTS & SCIENCES DIVISION



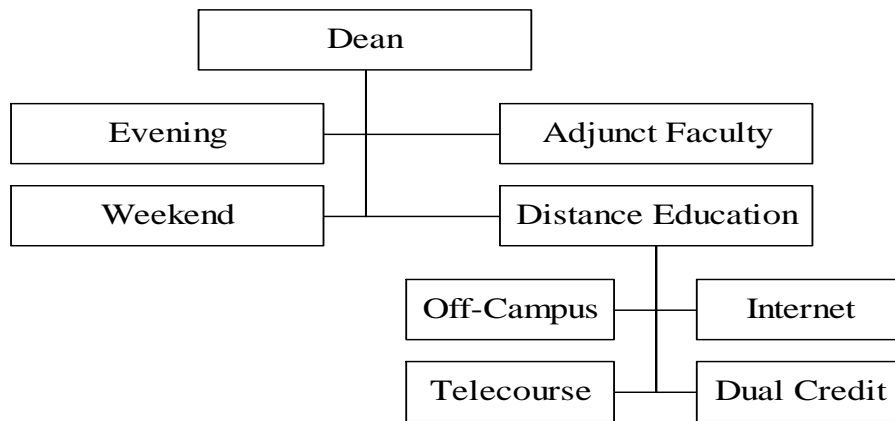
OCCUPATIONAL & TECHNICAL EDUCATION



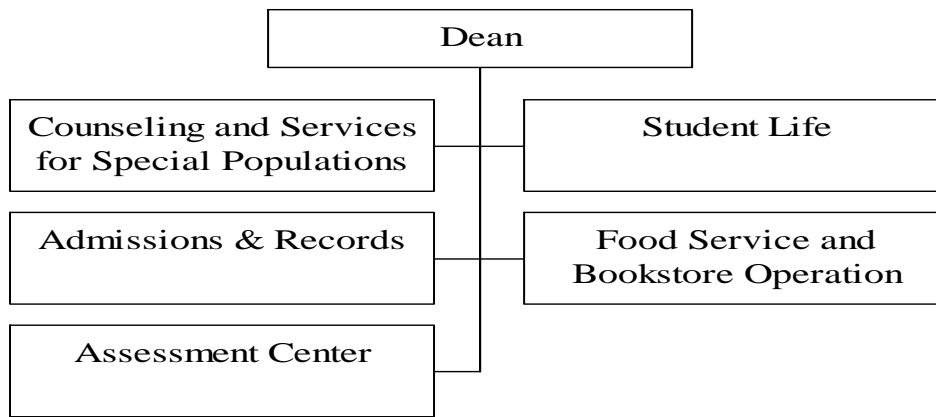
CONTINUING EDUCATION AND WORKFORCE DEVELOPMENT



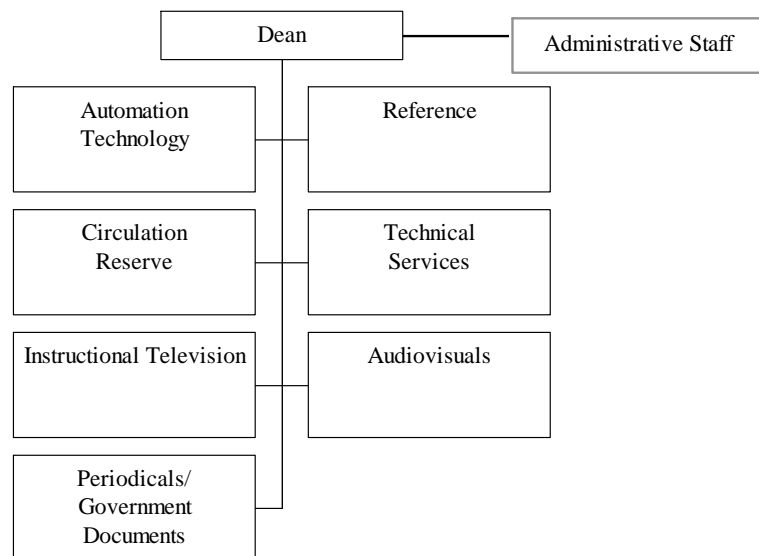
EVENING, WEEKEND & DISTANCE EDUCATION



STUDENT SERVICES



LEARNING RESOURCE CENTER



DIVISIONS

Arts and Sciences

San Antonio College offers a comprehensive Liberal Arts Curriculum designed to satisfy the requirements of the first two years of a baccalaureate degree. These general and transfer Arts and Science courses are offered by the following areas:

Architecture	Education	Physical Education
Astronomy	Engineering	Physics
Biological Sciences	Foreign Language	Psychology
Business Administration	Government	Radio-Television-Film
Chemistry	History	Reading
Child Development	Humanities	Social Work
Communications	Journalism	Sociology
Computer Science	Mathematics	Speech
Criminal Justice	Music	Theatre
Economics	Philosophy	Visual Arts & Technology
Earth Sciences	Photography	

Occupational and Technical Education

Programs are provided for purposes of job or career entry, career development and change; industry/business start-up and development; transfer to four-year degree programs; and technical services to industry. All of the programs are linked with the employing community through active advisory committees, cooperative or part-time work experience, direct placement and career development activities, as well as the sharing of work-site laboratories and equipment. San Antonio College offers programs in:

Accounting Technology	Legal Assisting Technology
Banking	Labor Studies
Business Management	Medical Assisting Technology
Court Reporting	Mental Health Technology
Child Development	Microcomputer Data Entry
Child Care Administration	Microcomputer Specialist
Computer-Aided Drafting and Design	Mortuary Science
Computer Help Desk Specialist	Network Administrator
Computer Programming	Nursing
Criminal Justice	Occupational Safety and Health Technology
Dental Assisting Technology	Office Systems Specialist
Electronics	Operations Management
Emergency Medical Services	Public Administration
Engineering Technology	Radio-Television-Film Technology
Financial Management	Real Estate Management
Fire Science	Records Management
Graphic Arts	Teacher Assistant
Interpreting for the Deaf	

Continuing Education and Workforce Development

Continuing Education provides nontraditional educational opportunities to meet the needs of students and employers in the San Antonio area. Occupational and technical short courses are offered for business, industry, government and professional groups; seminars and workshops are developed to complement and supplement in-house training and staff development programs. These non-traditional courses are developed in collaboration with college faculty and community experts. Other-than-credit courses and activities are offered on campus and throughout the community with dates and times arranged for the convenience of the students. Continuing Education assists departments and divisions by serving as an outreach mechanism for channeling interested students into appropriate credit programs within the college.

Certification programs are offered for managers, secretaries, law enforcement officers, private security guards, emergency medical technicians, pharmacy technicians, real estate agents, insurance agents, executive housekeepers, pest control applicators, payroll professionals and health care personnel. Community service programs include conversational languages, personal development and life skills courses, summer courses for children and planetarium programs for the general public. Parallel and integrated programs include classes in General Education Development (GED) and English as a Second Language skill.

Evening, Weekend and Distance Education

Evening course offerings include regular academic courses leading to college degrees and certificate programs, developmental education courses, and other courses planned to be of community service and vocational interest to adults. Courses are offered if there is sufficient demand. Late afternoon, evening, weekend and distance education classes (off-campus courses and telecourse/Internet/interactive courses) are scheduled for the convenience of students.

Distance Education

The Distance Education Center at San Antonio College provides innovative instructional delivery methods affording students access to college through flexible scheduling. Within the framework of college mission and goals, Distance Education works with all academic departments, the local business community and cities of Seguin, New Braunfels and Kerrville to develop educational responses to newly identified needs.

Traditional courses, as well as telecourses (courses broadcast by television) and Internet courses, are available to students in and out of Bexar County. These innovative instructional delivery methods are used to respond to the nontraditional educational needs within our community. Distance Education offers college courses at area high schools, military bases, USAA, Citicorp, and the cities of Seguin, New Braunfels and Kerrville. Internet courses are available to all local students as well as out-of-state students through on-line registration.

Student Services

Student Services are provided by Admissions and Records, Counseling, Health Services, Women's Center, disABILITY Support Services, Veterans Affairs, Student Support Services Project, Job Placement and Follow-Up, Assessment Center, International Student Services, Student Development Program, Student Life, Bookstore, and Food Service. Student Life includes student organizations, student government, special event programming and recreational sports, such as intramurals and extramural club teams.

Learning Resource Center

The Learning Resource Center is a vital technologically-advanced center of learning and exploration for students, staff, faculty and the community. Supplementing the book collection of 200,000 titles are 60,000 federal documents, 1,000 current periodical subscriptions, 65,000 microforms, 5,000 pamphlets and 3,500 videotapes.

Informational resources owned by the library are listed in an online catalog. Additional resources are accessible through the Internet/World Wide Web. Subject databases, such as Cumulative Index to Nursing and Allied Health Literature, are featured on a local area network (LAN).

The library is equipped with two state-of-the-art classrooms where librarians teach students search strategies and techniques for finding relevant information using online databases or traditional sources. The Audiovisual Center supports classroom instruction through its graphic, photographic and audio production facilities. The Educational media Center provides a contemporary studio and the means to broadcast telecourses directly to students' homes.

Librarians strive to help each student and to reduce "library anxiety."

INSTITUTIONAL RESOURCES

Instructional Technologies

The **Department of Instructional Technologies** was established to coordinate technological initiatives at San Antonio College. It functions in conjunction with the College Technology Committee to provide the technical expertise necessary to implement the College Technology Plan. The Department provides an official location to centralize information related to campus technical support and training for all academic and administrative units. It coordinates Campus activities with other organizations in the Alamo Community College District. The department includes the Technology Center, Help Desk, Instructional Innovation Center, and Technology Training Program.

Technology Center:

The **Technology Center** provides coordination, installation, and maintenance of campus computer systems and it provides technical support to all academic and administrative units. The Technology Center provides multimedia presentation units for classroom instruction, recommendations for purchasing, equipment setup, installation of hardware and software, implementation of off-campus connectivity, and assists other departments with planning.

The San Antonio College **Help Desk** functions as part of the Technology Center in order to provide immediate telephone assistance and trouble shooting for faculty, staff, and students. The Help Desk also develops and provides tutorials to assist the Internet Students.

Instructional Innovation Center:

The **Instructional Innovation Center** was established to provide training and assistance for faculty who want to enhance their instruction with new or innovative teaching techniques and technology. The Center provides a place for faculty to work with state-of-the-art equipment and software as well as obtain assistance and training with innovations such as, classroom presentations using computers and multimedia, computer-assisted instruction, infusion of the Internet and the World Wide Web into classroom assignments, video conferencing, and other techniques to improve learning and instruction. A certification program is provided for instructors, who develop courses to be taught fully over the Internet.

The **Technology Training Program** is provided in the Instructional Innovation Center for the faculty, staff, and administration of San Antonio College. This program was designed to assist with the achievement of certain college goals and to increase efficiency and effectiveness through the infusion of technology into the college classroom and office setting.

The following equipment is available for faculty and staff use in the Instructional Innovation Center: Pentium PC and Macintosh computers, with access to the Internet, E-mail, Advantage Financial Systems, and Student Information Systems. Additional equipment includes color laser and ink jet printers, image and text scanners, laser disk player, CD-ROM recorders, motion video capture card, microphones, LCD projectors, zip drives, digital cameras, VCR-TV, DVD drives, and videoconferencing equipment.

Instructional Innovation Center:

The Instructional Innovation Center serves faculty, staff, and administrators on a walk-in basis and provides training on the following topics:

Multimedia and Presentations:

Microsoft PowerPoint, GoldDisk Astound, Macromedia Authorware, Adobe Premier Video Capture and Editing, Digital Media Techniques, Rolling Multimedia Site Administrator, Rolling Multimedia User

Design and Graphics:

Adobe PhotoShop, Adobe PageMaker, Corel Draw, Photo Paint, Grypho Morph, Flash III, Adobe Illustrator, OmniForm, Paintshop Pro, Scanning Images and Text

General Computer Operations and Applications:

Microsoft Excel, Microsoft Word, Microsoft Access, Microsoft Outlook, Corel WordPerfect, Windows 95, Windows NT, Basic Computer Operations, Computer File Management and Organization

Internet and World Wide Web Design:

Netscape Communicator Composer, Corel Web Designer, DiDa, HotDog, Macromedia Dreamweaver, PageMill, FrontPage, Homesite, Gif Animator, Active Server Pages, Surfing the Web, Eudora E-mail, Preparing Graphics for the Web, Electronic Communications, Web Page Counter, HTML Coding and Editing, Instant Web Page Design, Organizing Web Bookmarks, Streaming Motion Video for the Web

Teaching Strategies and Research:

Classroom Research Design, Critical Thinking, Exploring Daedalus, Introduction to Teaching on the Internet, Teaching Skills for the Internet, Systems Issues Related to Teaching on the Internet

Video Training:

Video series on: How to Handle Difficult People, How to Supervise People, and Critical Thinking

Internet Course Certification:

Training is provided to faculty on skills needed to prepare and teach courses on the Internet. Following the completion of the required courses and development of an Internet course, the faculty member receives Internet Course Certification.

Interactive Videoconferencing Training:

Training is provided to faculty on skills needed to teach by way of two-way interactive videoconferencing or as it is sometimes called interactive television. When using this medium students and the instructor at the local site are able to see, hear, and speak with students at the distant site. The instructor is able to transmit presentations, hard copy documents, and motion video to the students at both locations. The training sessions for faculty include hands-on training with the videoconferencing equipment.

Learning Resource Center

The Learning Resource Center is equipped with two state-of-the art classrooms where librarians teach students search strategies and techniques for finding relevant information using online databases or using traditional sources. An audiovisual center supports classroom instruction through its graphic, photographic and audio production facilities. The Educational Multimedia Center provides a contemporary TV studio and the means to broadcast telecourses directly to students' homes.

LEARNING RESOURCE CENTER SERVICES 1989-1990 TO 1998-1999

CATEGORY/SERVICE	89-90	90-91	91-92	92-93	93-94	94-95	95-96	96-97	97-98	98-99
Collections – All items	380,421	371,084	365,550	361,186	366,946	316,468	375,394	247,448	250,004	254,160
Materials Processed (#)	---	---	8,538	9,651	13,683	11,265	15,977	12,641	6,118	6,279
LIBRARY ATTENDANCE										
User Headcount for 2 nd & 3 rd Floors Only	---	443,175	416,205	366,717	366,059	373,482	352,000	377,788	333,017	1,122,051
LIBRARY INSTRUCTION										
Group Instruction Sessions	304	333	347	377	434	478	503	549	580	575
Students Taught in GIS Sessions	10,129	9,345	9,429	10,514	11,873	12,180	12,272	12,324	11,371	11,906
Reference Questions	---	---	---	31,008	34,880	44,256	44,960	39,552	35,201	38,310
Directional Questions	---	---	---	23,264	19,840	23,856	23,584	22,176	19,950	22,112
BOOK COLLECTION										
Book Circulation	62,330	58,729	53,095	56,318	68,757	56,839	56,238	52,872	82,909	157,202
In-Library Use of Books	80,104	75,253	88,137	86,189	64,408	59,692	37,017	87,931	111,952	366,820
Interlibrary Loans	4,378	3,659	4,512	4,636	6,492	8,211	8,736	7,152	7,098	6,396
PERIODICALS COLLECTION										
Periodical Circulation	112,728	81,108	76,464	62,717	61,424	68,591	61,834	54,893	39,355	34,747
AUDIOVISUAL COLLECTION										
AV Equipment Circulation	12,733	13,758	17,518	19,120	22,144	14,081	13,950	10,453	8,507	7,304
In-Library/ACCD Use of AV materials & Equipment	---	---	---	18,350	26,263	19,799	33,070	32,958	23,326	14,574
INSTRUCTIONAL TELEVISION										
Studio, Campus & Remote Shoots (# Hours)	---	585	305	211	323	511	651	392	830	497
Telecourse Playback	---	---	---	---	---	1,885	2,135	2,069	1,461	2,049
Editing/Dubbing Sessions (# Hours)	---	85	117	196	177	194	305	190	3,342	663
Teleconference Program (# Hours)	---	42	74	146	149	77	103	109	59	106

SOURCE: Learning Resource Center

Student Learning Assistance Center

The Student Learning Assistance Center (SLAC) supplements classroom instruction by offering learning strategies that enhance the success potential of traditional and non-traditional students in the college environment. The goal of the SLAC is to enable the Alamo Community College students to be independent and resourceful learners by providing learning strategies appropriate to non-traditional students and students with diverse learning styles. SLAC develops independent learners by teaching students how to learn rather than merely giving them quick answers. The learning strategies offered through the SLAC include: Tutoring Services, Computer Services, and Study Skill Services.

The SLAC has several computer programs for student use such as accounting, electronic mail, Foreign Languages tutorial, internet access, Microsoft Office and word processing. The computers are available on a first-come, first-serve basis. On occasion, a teacher will bring a class into the SLAC for a demonstration of a specific software package, which may require several computers to be reserved for the class period.

During the 1999-2000 school year, the SLAC had 69,279 student visits to use computer facilities, which represents an 8% increase over the previous academic year. Additionally, the 80,417 visits to the SLAC, including computer, tutoring, language lab and workshops, during the 1999-2000 academic year represent a 3.3% increase over the previous academic year.

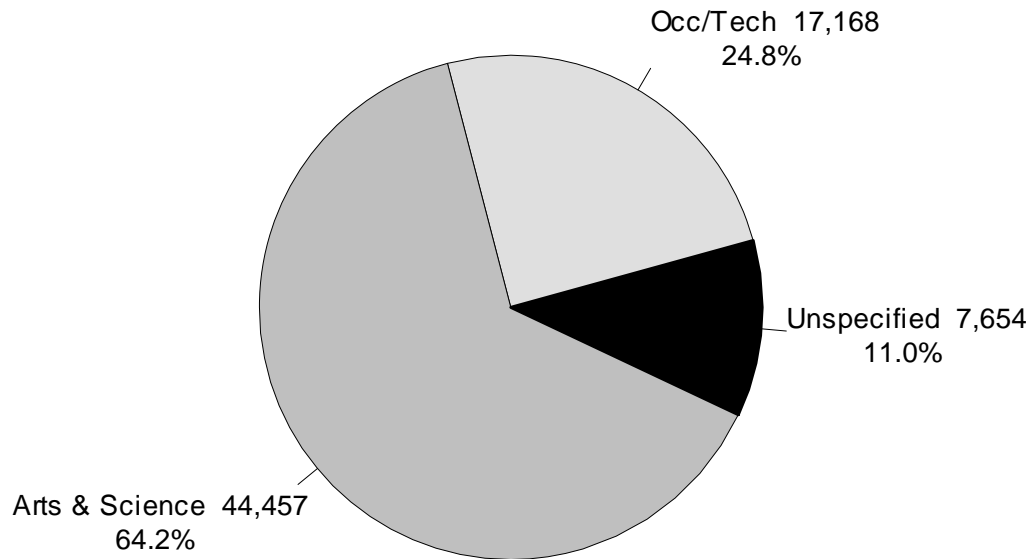
The Software programs include MS Word, WordPerfect, accounting, spreadsheets, databases, Internet, foreign languages, management, history, psychology, mathematics and chemistry. Over 540 class sessions were held in the SLAC during the year from Management, Business Administration, History, Government, Legal Assisting, English, Public Administration, Chemistry, Computer Science, Foreign Languages, ESOL, Continuing Education and Distance Education.

STUDENT LEARNING ASSISTANCE CENTER SPECIALIZED VISIT SUMMARY**1999-2000**

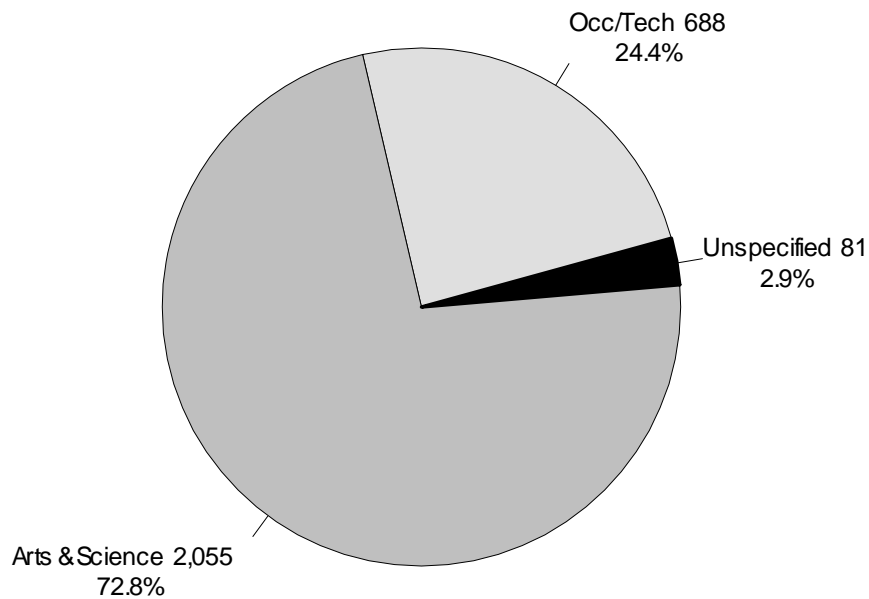
Division	Computer Visits		Tutoring Visits		Lang. Lab	Workshops Seminars	Total
Arts & Science	44,457	64.2%	2,055	72.8%			
Occupational Technical	17,168	24.8%	688	24.4%			
TBA	164	.2%	3	.1%			
Unknown	7,490	10.8%	78	2.8%			
TOTALS	69,279	100%	2,824	100%	8,233	81	80,417

Source: Student Learning Assistance Center

STUDENT LEARNING ASSISTANCE CENTER COMPUTER USAGE 1999-2000
(69,279 Total Visits)



STUDENT LEARNING ASSISTANCE CENTER TUTORING VISITS 1999-2000
(2,824 Total Visits)



SOURCE: Student Learning Assistance Center

TRANSFER

Tech Prep

San Antonio College is engaged in major technical and professional career preparation by providing continuity of learning and quality educational opportunities for all students. The Tech Prep/Associate Degree program is a significant component of this concept providing educational and career preparation in technical fields to high school students who will be the workforce of the future.

The concept of Tech Prep involves a sequence of knowledge and skills acquisition beginning in elementary school, linked with a guided, integrated high school plan of academic and technical subjects, which connects the student to the community college and the university. Articulation provides the avenue for high schools and community colleges to share a jointly developed competency-based, industry-validated curriculum without duplication or repetition. The Tech Prep curricula in high schools and colleges represent a rigorous body of knowledge and skills that will prepare a better-educated worker with advanced skills and the ability to apply these skills as the world of technology changes.

In collaboration with regional independent school districts, San Antonio College has developed Tech Prep Associate Degree programs in Child Development, Computer-Aided Drafting and Design, Criminal Justice/Law Enforcement, Electronics, Medical and Dental Assisting and Office Systems Technology. A new Memorandum of Understanding between the U.S. Navy and San Antonio College has been signed allowing high school students to earn articulated credit toward an associate degree in nuclear electronics, advanced electronics and computers. These programs have been approved or are pending approval by the Texas Higher Education Coordinating Board.

Transfer Resource and Advisement Center

In the Transfer Resource and Advisement Center, students may obtain personal one to one counseling concerning 2+2 degree plans, information about local Joint Admissions Agreements with a 4-year institution, as well as hands-on availability to educational directories, catalogs and resource materials. Access to the World Wide Web resources are provided along with several computer programs designed to assist multi-level degree planning. Internet resources include, but are not limited to, Online Web colleges and universities, both foreign and domestic; and information on funding sources, such as scholarships and fellowships, some of which are designed specifically to meet the needs of minorities. Additionally, the center counselors arrange visits to out-of-town, four-year institution campuses and there is weekly on-campus availability of various admissions representatives. The biannual Transfer Fair provides a wide-range of opportunities for SAC students.

2+2 Degree Plans, Articulation Agreements and Joint Admission Agreements: Transferring to Four-Year Institutions

San Antonio College operates in full compliance with the guidelines and policies set forth by the Texas Higher Education Coordinating Board hereafter known as THECB. As such, the **Core Curriculum** established by San Antonio College and provided to SAC students is transferable to any four-year institution. The Texas legislature has mandated that all Texas post-secondary institutions develop a core curriculum in accordance with the guidelines established and approved by the THECB, and that all Texas public four-year institutions must accept the entire core curriculums of any public post-secondary institution as meeting the core curriculum of their institution.

However, it benefits the four-year degree-seeking student to consult the Transfer Resource and Advisement Center concerning 2+2 degree plans, Joint Admission Agreements and Articulation agreements. Each institution can be unique in discipline requirements and solidly specific in admission requirements. Without a determined degree plan that is compatible with the transfer institution a student may waste time, money and semester hours on courses not applicable to their major field of study. The Transfer Resource and Advisement Center can possibly make the journey to becoming a graduate cost effective and enriched with smooth transfers. If possible, counselors will clarify policy requirements, academic expectations and institutional characteristics.

2+2 Degree Plans are contractual educational terms that will be honored by a particular transfer institution contingent on academic standards, admission requirements and student performance.

Articulation Agreements are defined and signed agreements between San Antonio College and various institutions concerning the transfer of students. Each agreement is tailored to the academic criteria of the transfer institution.

Joint Admission Agreements are degree plans specific to a particular institution. Courses are determined by the transfer institution.

An abbreviated list of participating institutions follows. The **Transfer Resource and Advisement Center** has a complete listing, 1-800-numbers and professional support in transferring to the four-year institution of your choice.

Abilene Christian University	Texas Southern University
Angelo State University	Texas Physician Assistant Program
Baylor University	Texas Women's University
Our Lady of the Lake University	Turabo State University
Midwestern University	Universidad de Guadalajara
Southwest Texas State University	University of Houston
St. Mary's University	University of Houston - Victoria
Sul Ross State	University of the Incarnate Word
Texas A&M – College Station	University of Texas Health Science Center
Texas A&M – Kingsville	

CONTENTS – STUDENT PROFILE

GENERAL INFORMATION

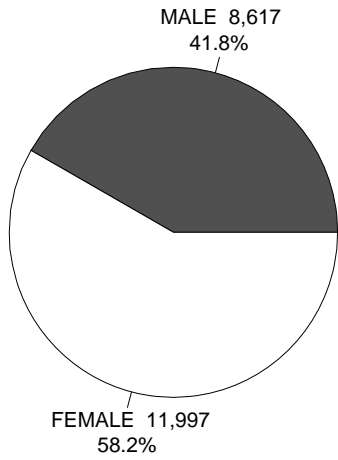
Gender, Ethnicity, Age, Major, Hours Enrolled, Day vs. Evening	23
Top Ten:	
Academic Majors	24
Vocational Majors	24
Feeder High Schools	24
Zip Codes of Residence	25
Counties of Residence	25
States of Residence	25
Student Objective in Attending San Antonio College	26
Intended Duration of Enrollment.....	26
Previous College Experience	26
Student Employment Status	26
Financial Aid and Scholarship Awards	27

ACADEMIC ACHIEVEMENT

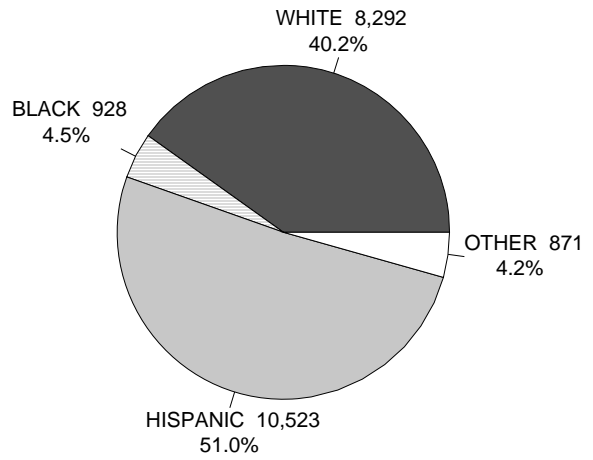
Grade Distribution, Fall 1999.....	28
Grade Distribution Trends, Fall Semesters 1995-1999.....	28
Fall to Fall Retention by Ethnicity, 1992-1993 to 1997-1998	29
Retention of First-Time, Full-Time Freshmen by Ethnicity, Fall 1998	29
Graduation Degrees & Certificates Awarded, 1998-1999	30
Graduation Degrees by Ethnicity, 1998-1999	30
Graduation Degrees & Certificates Awarded, 1994-1995 to 1998-1999.....	30
TASP Results by Institution, 1998-1999.....	31
TASP Pass Rates by Ethnicity, 1998-1999.....	31
Initial Pass Rates by Test Route, 1998-1999.....	31

FALL 99
20,614 STUDENTS

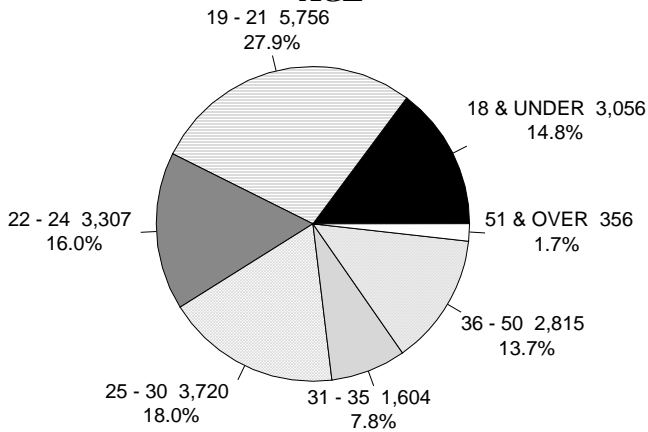
GENDER



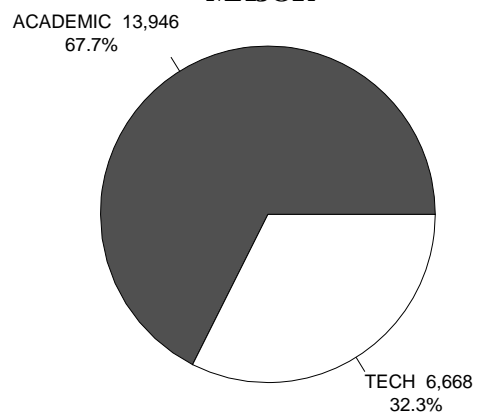
ETHNICITY



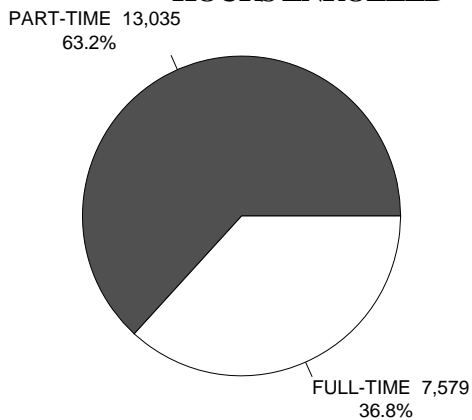
AGE



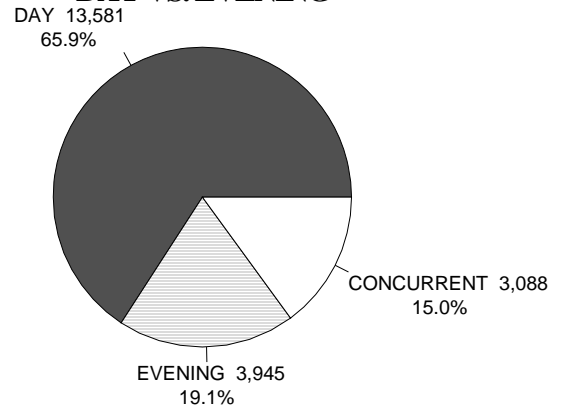
MAJOR



HOURS ENROLLED



DAY VS. EVENING



SOURCE: CBM001; RCA003

**FALL 99 - TOP TEN
ACADEMIC MAJORS**

MAJORS	NUMBER
1. Liberal Arts	7,015
2. Business Administration – Accounting	1,222
3. Education	905
4. Nursing (4-Year Degree)	522
5. Psychology	513
6. Biological Sciences	502
7. Computer Science	371
8. Medicine	290
9. Art	250
10. Architecture	242

SOURCE: RCA003, 9/10/99

VOCATIONAL MAJORS

MAJORS	NUMBER
1. Pre-Nursing	917
2. Computer Programming	414
3. Child Development	410
4. Nursing (RN)	387
5. Criminal Justice-Law Enforcement Option	348
6. Network Administration	276
7. Radio-TV-Film Technology	240
8. Management	225
9. Electronic Graphic Arts	219
10. Legal Assisting	170

SOURCE: RCA003, 9/10/99

FEEDER HIGH SCHOOLS (FTIC'S)

HIGH SCHOOLS	NUMBER
1. James Madison – North East I.S.D.	116
2. Winston Churchill-North East I.S.D.	112
3. Douglas MacArthur – North East I.S.D.	103
4. Judson High School – Judson I.S.D.	100
5. Tom Clark – Northside I.S.D.	97
6. Thomas Jefferson – San Antonio I.S.D.	91
7. Robert E. Lee – North East I.S.D.	76
8. John Marshall – Northside I.S.D.	76
9. Taft High School – Northside I.S.D.	72
10. Theodore Roosevelt High School – North East I.S.D.	67

SOURCE: RFA9781, 9/4/99

**FALL 99 - TOP TEN
ZIP CODES OF RESIDENCE**

ZIPCODES	NUMBER
1. 78240	969
2. 78228	902
3. 78213	855
4. 78250	845
5. 78247	784
6. 78201	777
7. 78216	756
8. 78230	675
9. 78212	664
10. 78229	657

SOURCE: RFA9421, 7/18/00

COUNTIES OF RESIDENCE

COUNTIES	NUMBER
1. Bexar	19,128
2. Comal	550
3. Guadalupe	371
4. Kerr	205
5. Wilson	113
6. Bandera	95
7. Medina	94
8. Kendall	85
9. Atascosa	74
10. Cameron	36

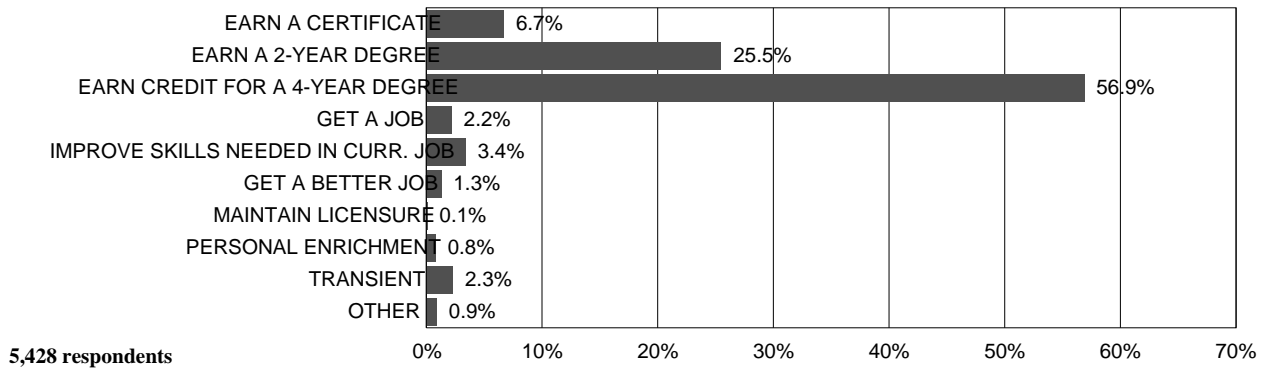
SOURCE: RCA003, 9/10/99

STATES OF RESIDENCE

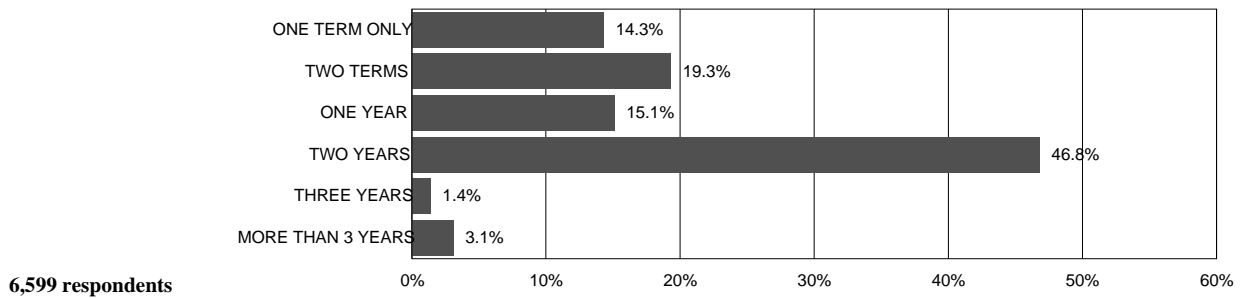
STATES	NUMBER
1. Texas	19,936
2. California	101
3. Missouri	92
4. Florida	55
5. New York	35
6. Illinois	31
7. Virginia	22
8. Ohio	21
9. Michigan	19
10. Oklahoma	18

SOURCE: RCA003, 9/10/99

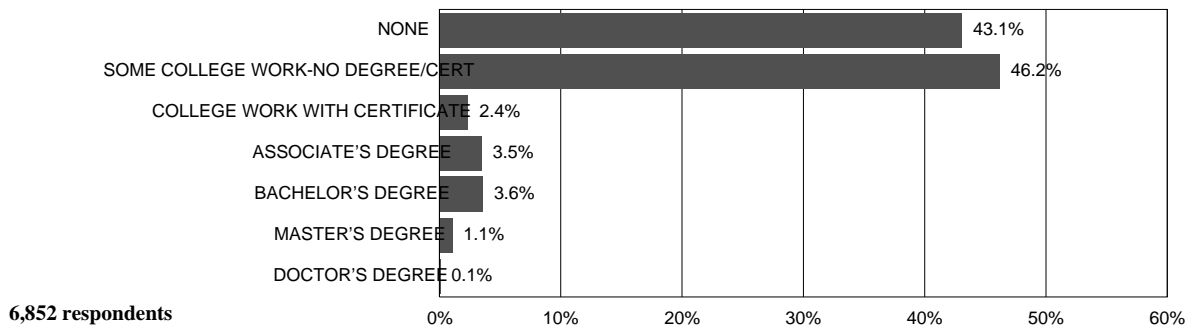
FALL 1999
STUDENT OBJECTIVE IN ATTENDING SAN ANTONIO COLLEGE



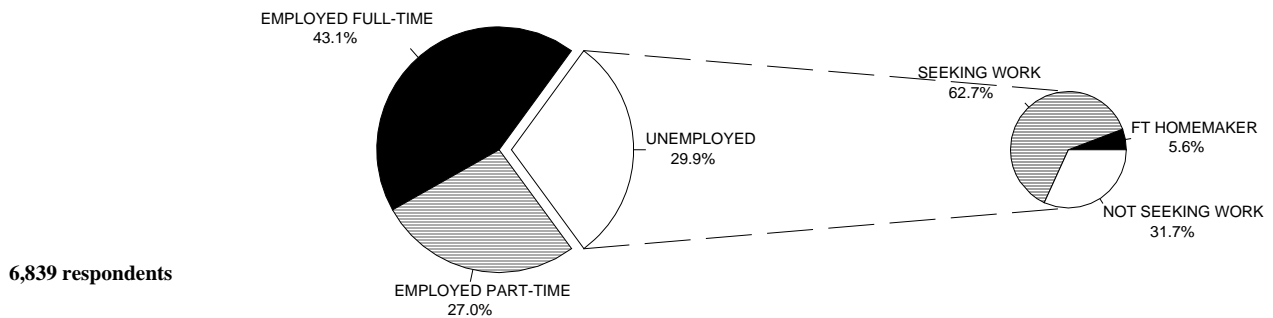
INTENDED DURATION OF ENROLLMENT



PREVIOUS COLLEGE EXPERIENCE



STUDENT EMPLOYMENT STATUS



SOURCE: STUDENT TRACKING SURVEY (AFA202, 2/24/00); 21,353 potential respondents

FINANCIAL AID AWARDS 1999- 2000

CATEGORY	AMOUNT	# AWARDS
Pell Grant	\$11,840,000	7,134
Stafford Loan	7,931,481	3,526
Federal Work Study	885,385	576
Supplemental Education Opportunity Grant (SEOG)	817,430	1,178
Scholarships	623,640	1,153
State Incentive Grant (SSIG)	57,835	125
Texas Work Study	59,440	35
Texas Public Education Grant (TPEG)	788,775	1525
TOTAL	\$23,003,986	15,252

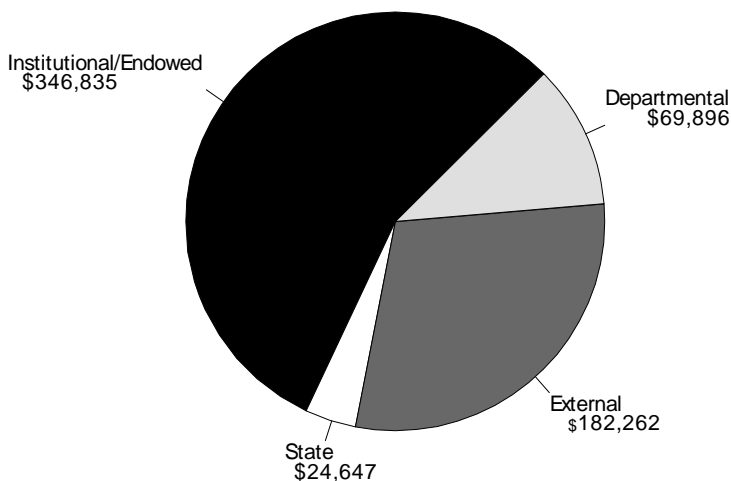
SOURCE: Student Financial Aid Office

SCHOLARSHIPS AWARDED 1999- 2000

Institutional/Endowed	\$ 346,835
Departmental	69,896
State	24,647
External	182,262

Total Awarded \$ 623,640

Total number of scholarships awarded: **1,153**



Scholarships are available from a variety of sources both private and public. Listed below are types of scholarships available through San Antonio College.

Endowed scholarships- awarded by ACCD. Contributions made to ACCD scholarship foundation by private donors. Applications available at Student Financial Services.

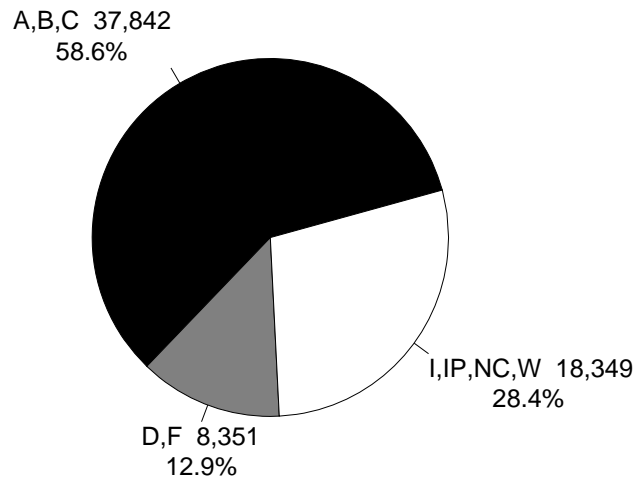
Institutional scholarships- awarded by Student Financial Services. Applications available at Student Financial Services Office.

Departmental scholarships- awarded by departments. Private gifts donated to departments from various organizations. Awards usually based on major, GPA, community work. For additional information/ applications, contact departments.

State scholarships-Texas Tuition Assistance Grant, Early High School Graduates, Good Neighbor, and Professional Nursing available through the Texas Higher Education Coordinating Board. Awarded by Student Financial Services.

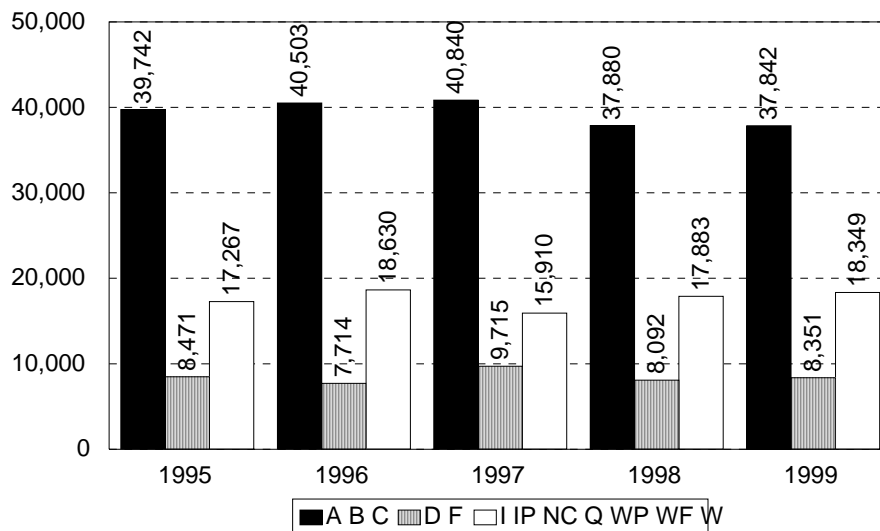
External scholarships- awarded by a variety of off-campus businesses/organizations for students attending San Antonio College.

GRADE DISTRIBUTION – FALL 1999



GRADE DISTRIBUTION TRENDS – FALL 1995-1999

	A	B	C	Productive Rate	D	F	Completion Rate	I	IP	NC	W	Total
1995	13,552 20.7%	15,269 23.3%	10,921 16.7%	39,742 60.7%	3,448 5.3%	5,023 7.7%	48,213 73.6%	1,170 1.8%	199 0.3%	203 0.3%	15,695 24.0%	65,480 100.0%
1996	14,086 21.1%	15,366 23.0%	11,051 16.5%	40,503 60.6%	3,290 4.9%	4,424 6.6%	48,217 72.1%	1,112 1.7%	268 0.4%	238 0.4%	17,012 25.4%	66,847 100.0%
1997	14,406 21.7%	15,459 23.3%	10,975 16.5%	40,840 61.4%	3,422 5.1%	6,293 9.5%	50,555 76.1%	0 0.0%	191 0.3%	158 0.2%	15,561 23.4%	66,465 100.0%
1998	12,926 20.2%	14,515 22.7%	10,439 16.3%	37,880 59.3%	3,323 5.2%	4,769 7.5%	45,972 72.0%	820 1.3%	204 0.3%	203 0.3%	16,656 26.1%	63,855 100.0%
1999	13,608 21.1%	14,263 22.1%	9,971 15.5%	37,842 58.6%	3,337 5.2%	5,014 7.8%	46,193 71.6%	913 1.4%	292 0.5%	206 0.3%	16,938 26.2%	64,542 100.0%



SOURCE: RFA696, 3/21/00

FALL TO FALL RETENTION BY ETHNICITY 1992-1993 TO 1997-1998

	92-93 %	93-94 %	94-95 %	95-96 %	96-97 %	97-98 %
% of SAC students who reenrolled at San Antonio College the next Fall						
Anglo	40.3	41.2	41.6	40.9	40.0	39.1
Black	35.8	39.4	38.7	37.3	35.5	36.8
Hispanic	43.0	45.6	45.6	45.5	45.2	43.1
Asian	48.3	45.1	46.7	45.0	51.8	43.8
Native American/Alaskan	43.0	38.2	48.3	44.2	36.5	38.6
Non-Resident Alien	48.6	58.2	48.0	45.3	46.8	51.0
Total	41.6	43.5	43.6	43.2	42.7	41.3
Texas	39.4	39.5	39.1	37.2	38.8	38.8
% of SAC students not found in any state college the next Fall						
Anglo	45.8	45.6	45.5	45.4	46.1	45.0
Black	54.2	50.7	52.5	53.7	53.7	51.9
Hispanic	48.5	44.7	45.4	45.2	45.1	46.5
Asian	39.4	39.8	41.1	41.3	35.3	38.6
Native American/Alaskan	48.8	51.3	38.2	42.1	52.9	44.6
Non-Resident Alien	46.4	33.5	41.2	44.2	48.3	37.4
Total	47.4	45.2	45.6	45.5	45.7	45.8
Texas	47.5	47.1	47.6	47.2	47.3	46.9

SOURCE: Texas Higher Education Coordinating Board Student Migration Report; transfer to private or out-of-state institutions not considered

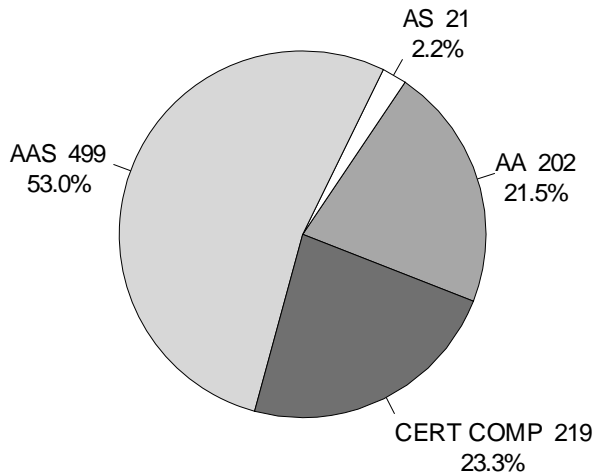
**RETENTION OF FIRST-TIME FULL-TIME* FRESHMEN BY ETHNICITY
FALL 1998**

	WHITE	BLACK	HISPANIC	ASIAN	NATIVE AM./ ALASKAN	INTERNATIONAL	TOTAL
<u>San Antonio College</u>							
Enrolled Fall 1997	558	60	890	25	7	12	1,552
Retained After One Year	336	29	465	19	4	6	859
Percent Retained	52.6%	48.3%	52.2%	76.0%	57.1%	50.0%	55.3%
<u>Total – Texas</u>							
Enrolled Fall 1997	24,568	4,605	12,624	1,048	222	727	43,794
Retained After One Year	12,505	1,971	6,927	671	88	375	22,537
Percent Retained	50.9%	42.8%	54.9%	64.0%	39.6%	51.6%	51.5%

SOURCE: Texas Higher Education Coordinating Board – 1999 Statistical Report

* A student who is enrolled in 12 or more semester credit hours at a community college or 8 or more semester credit hours at a technical college.

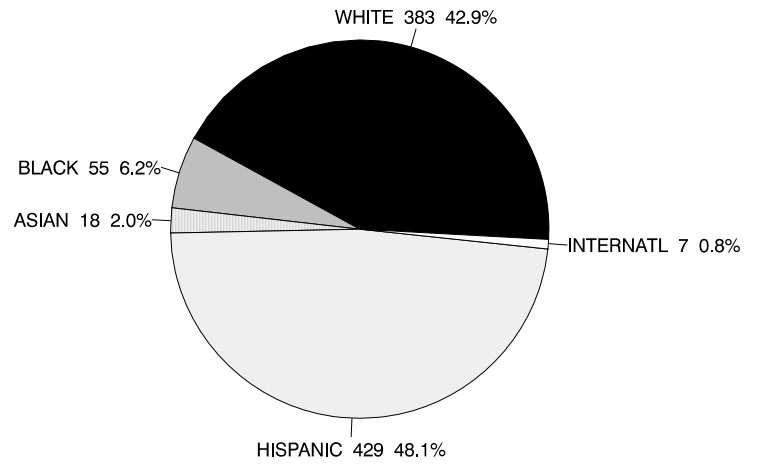
1998-1999 GRADUATION DEGREES & CERTIFICATES AWARDED



TOTAL DEGREES: 941

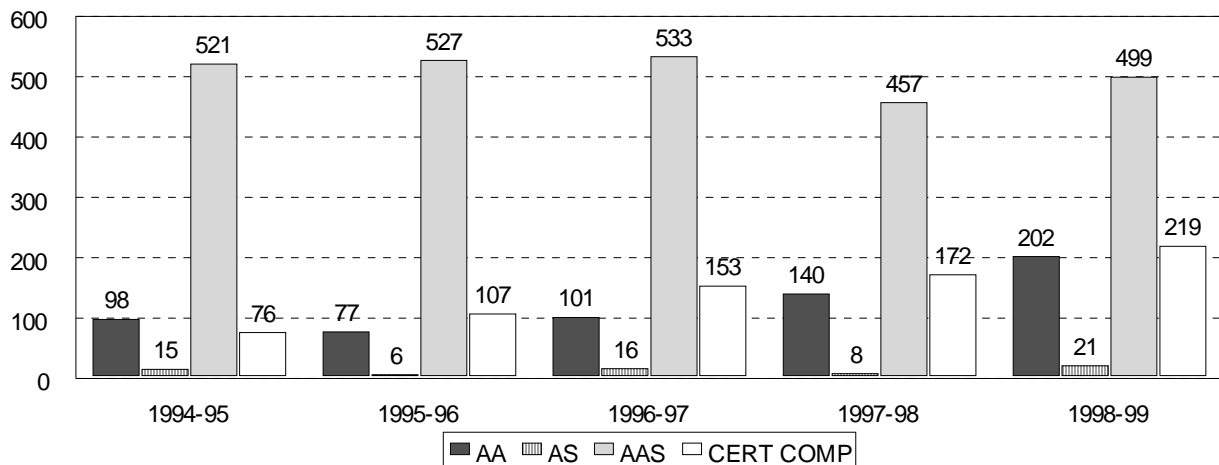
SOURCE: CBM009, 11/02/99

1998-1999 GRADUATES BY ETHNICITY



TOTAL GRADUATES: 892

DEGREES AND CERTIFICATES AWARDED 1994-1995 TO 1998-1999



DEGREE OR CERT.	94-95	95-96	96-97	97-98	98-99
AA	98 13.8%	77 10.7%	101 12.6%	140 18.0%	202 21.5%
AAS	521 73.4%	527 73.5%	533 66.4%	457 58.8%	499 53.0%
AS	15 2.1%	6 0.8%	16 2.0%	8 1.0%	21 2.2%
CERT COMP	76 10.7%	107 14.9%	153 19.1%	172 22.1%	219 23.3%
TOTAL	710	717	803	777	941

SOURCE: CBM009, 11/02/99

*** TASP RESULTS BY INSTITUTION 1998-1999**

INSTITUTION	# OF EXAMINEES THAT TOOK ALL 3 PARTS	% PASSED READING	% PASSED MATH	% PASSED WRITING	% PASSED ALL SECTIONS
San Antonio College	5380	76.3	51.9	75.2	43.8
St. Philip's College	1911	70.5	47.4	73.5	40.7
Palo Alto College	2178	68.0	43.7	73.8	34.8
Northwest Vista College	113	74.7	48.6	72.0	38.9
UT San Antonio	66	67.4	63.6	76.5	50.0
Southwest Texas	877	56.0	70.2	46.3	55.4
Texas Two-Year	69,266	51.0	41.0	54.6	34.9
Texas Four-Year	31,340	65.9	62.4	67.6	52.3
Texas Total	100,606	55.8	47.8	58.8	40.3

SOURCE: Texas Higher Education Coordinating Board TASP Test Results Academic Year 1998-1999.

*** TASP RE-TAKE PASS RATES BY ETHNICITY 1998-1999**

INSTITUTION	ASIAN	BLACK	HISPANIC	WHITE	OTHER	TOTAL
San Antonio College	43.3	33.5	40.9	50.8	43.1	43.8
St. Philip's College	48.8	33.2	39.4	50.5	37.5	40.7
Palo Alto College	31.4	35.3	32.6	42.6	50.0	34.8
Northwest Vista College	100.0	0.0	42.6	34.1	---	38.9
Texas Two-Year	40.2	27.6	28.0	44.3	33.0	34.9

SOURCE: Texas Higher Education Coordinating Board TASP Test Results Academic Year 1998-1999.

* TASP passing rates represent a duplicate headcount of students who re-took the TASP one or more times during the year and passed one or more sections. This table does not include students who passed TASP completely on the first attempt.

INITIAL PASS RATES BY TEST ROUTE 1998-1999

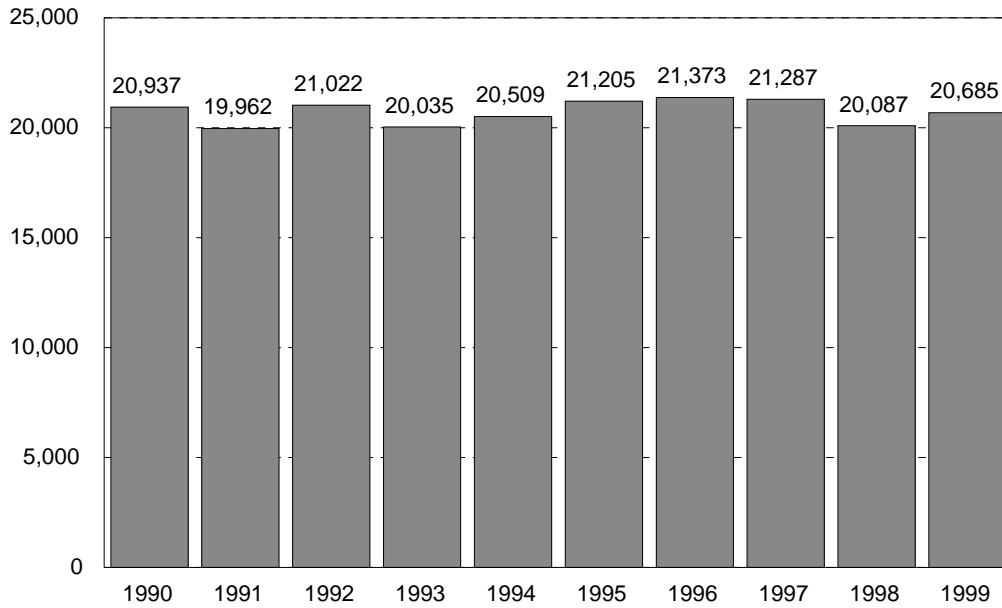
TEST ROUTE	# OF EXAMINEES	TEST DISTRIBUTION	ALL 3 PARTS	MATH	READING	WRITING
TASP	2,620	43.4	39.7	51.8	71.9	78.1
ACCUPLACER	3,224	53.4	14.6	22.8	56.7	60.9
ASSET	192	3.2	15.1	21.4	49.0	78.1
ALL ROUTES	6,036	100.0	25.5	35.4	63.1	68.9

SOURCE: Texas Higher Education Coordinating Board TASP Test Results Academic Year 1998-1999.

CONTENTS – ENROLLMENT TRENDS

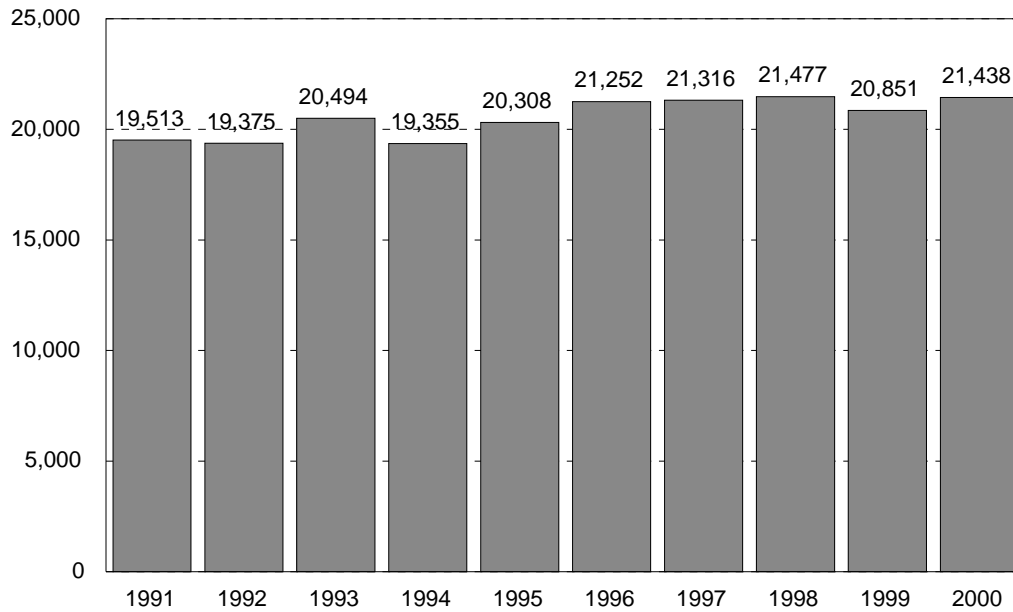
Credit Programs:	
Fall Semesters 1990-1999 and Spring Semesters 1991-2000	33
Summer I Session 1991-2000 & Summer II Sessions 1991-1999.....	34
By Classification Fall Semesters 1995-1999 (Summary Statistics)	35
By Gender.....	36
By Ethnicity	36
By Division	37
Part-Time vs. Full-Time	37
Day vs. Evening.....	38
By Residency.....	38
By Age	39
First-Time Students	39
Contact Hours, Fall & Spring Semesters 1995-2000	40
Contact Hours, Summers I & II 1996-2000	40
Distance Education:	
Highlights	41
Enrollment, Fall Semesters 1996-1999	42
Developmental Education:	
Enrollment Fall Semesters 1995-1999	44
Trends in Developmental English.....	45
Trends in Developmental Math	45
Trends in Developmental Reading	45
Continuing Education:	
Highlights	46
Contracts, Partnerships	47
Contract Companies	48
Total Enrollment 1990-1991 to 1999-2000.....	49
Tuition/Fee Revenue 1990-1991 to 1999-2000.....	49
Reimbursable Headcount by Quarter 1995-1999.....	50
Reimbursable Contact Hours by Quarter 1995-1999.....	50
Reimbursable Classes by Quarter 1995-1999	50

ENROLLMENT FALL SEMESTERS 1990-1999



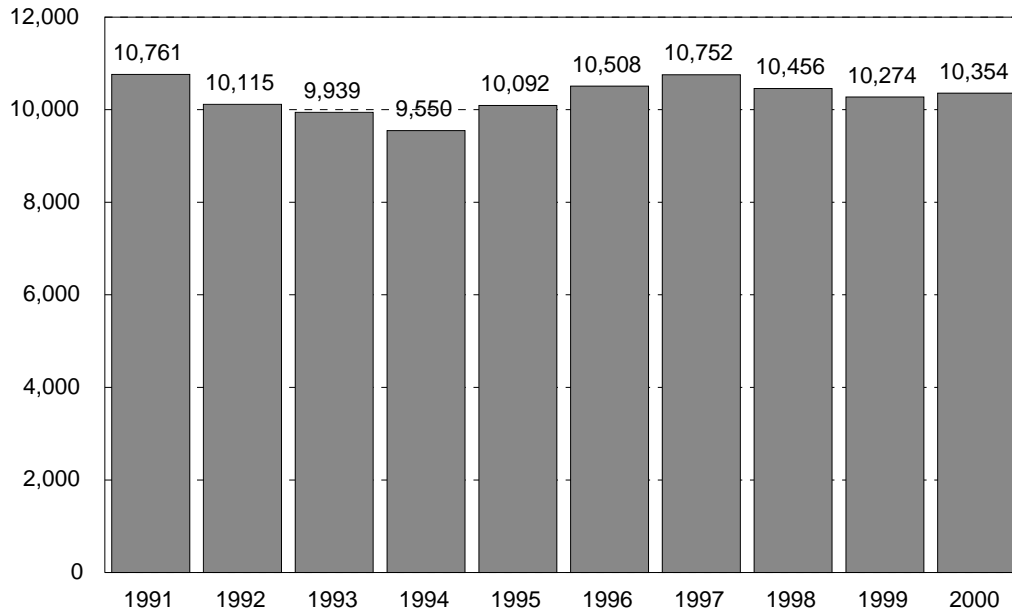
SOURCE: CBM001

ENROLLMENT SPRING SEMESTERS 1991-2000



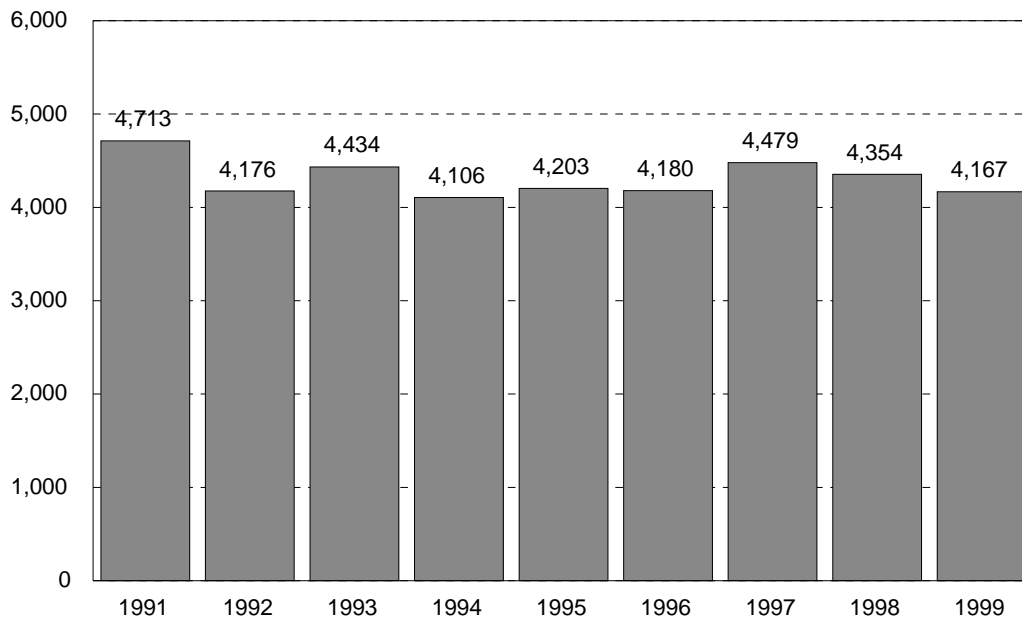
SOURCE: CBM001

ENROLLMENT SUMMER SESSION I 1991-2000



SOURCE: CBM001

ENROLLMENT SUMMER SESSION II 1991-1999



SOURCE: CBM001

Note: Summer II 1999 certified data not available in time for publication.

ENROLLMENT TRENDS BY CLASSIFICATION – FALL 1995-1999

	1995	1996	1997	1998	1999
GENDER					
Female	12,268	12,435	12,306	11,497	11,997
Male	8,937	8,929	8,981	8,571	8,617
ETHNICITY					
White	8,676	8,837	8,824	8,175	8,292
Black	961	926	888	882	928
Hispanic	10,746	10,795	10,735	10,195	10,523
Other	822	806	840	816	871
AGE					
17 & under	314	591	1,128	824	1,148
18	1,795	1,687	1,752	1,743	1,908
19 - 21	6,004	6,204	5,972	5,657	5,756
22 - 24	3,630	3,507	3,493	3,260	3,307
25 - 30	3,937	3,885	3,834	3,726	3,720
31 - 35	2,170	2,136	1,924	1,706	1,604
36 - 50	3,012	3,010	2,825	2,821	2,815
51 - 64	325	329	341	316	348
65 & over	18	15	18	15	8
Average age	26.5	26.3	26.0	26.1	25.9
DIVISION					
Arts & Sciences	14,615	14,832	14,642	13,621	13,946
Occ/Tech	6,590	6,532	6,645	6,447	6,668
PART-TIME vs. FULL-TIME					
Part-time	14,060	13,967	14,021	12,727	13,035
Full-time	7,145	7,397	7,266	7,341	7,579
DAY vs. EVENING					
Day	12,583	12,931	13,806	13,219	13,581
Evening	5,403	5,369	4,547	3,943	3,945
Concurrent	3,219	3,064	2,934	2,906	3,088
RESIDENCY					
Texas Counties	20,413	20,522	20,553	19,253	19,699
Other States	577	628	526	569	630
Foreign Countries	215	214	208	246	285
TOTAL	21,205	* 21,364	21,287	* 20,068	* 20,614

SOURCE: CBM001; RCA003

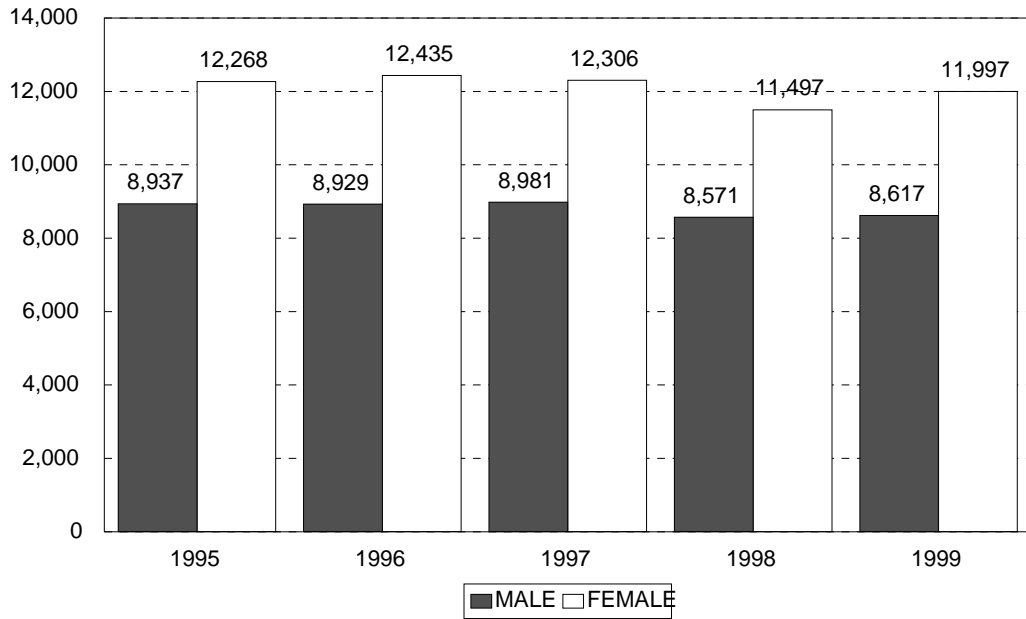
* Total does not include flexible entry students for whom no demographic data are available.

Total Fall 96 enrollment is 21,373

Total Fall 98 enrollment is 20,087

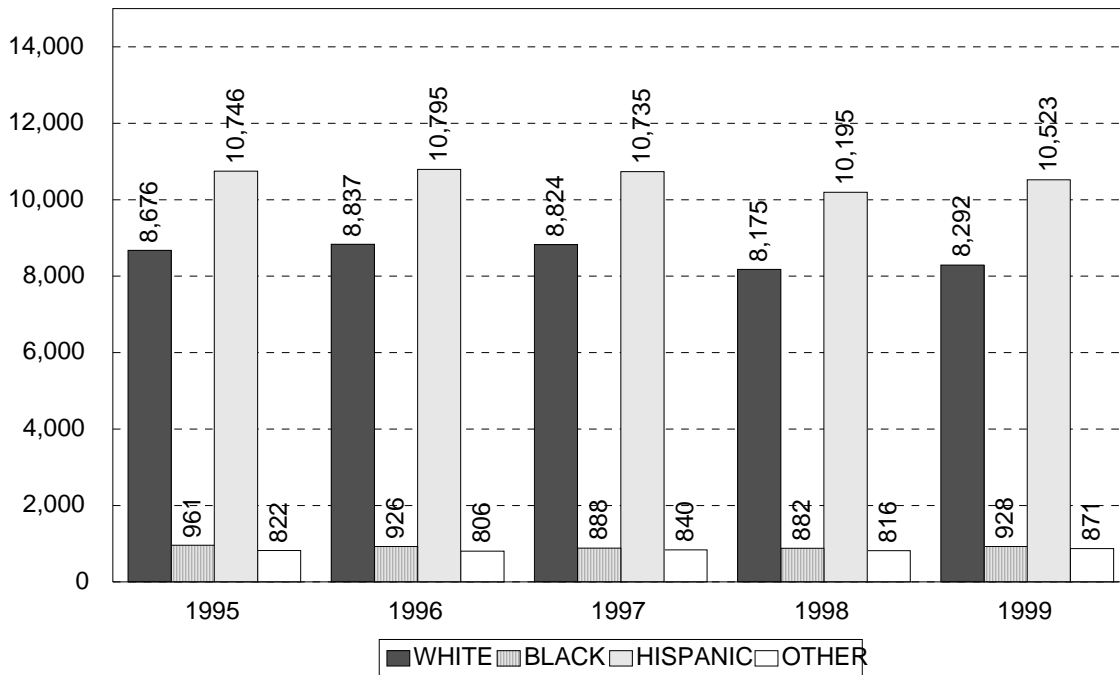
Total Fall 99 enrollment is 20,685

BY GENDER FALL 1995-1999



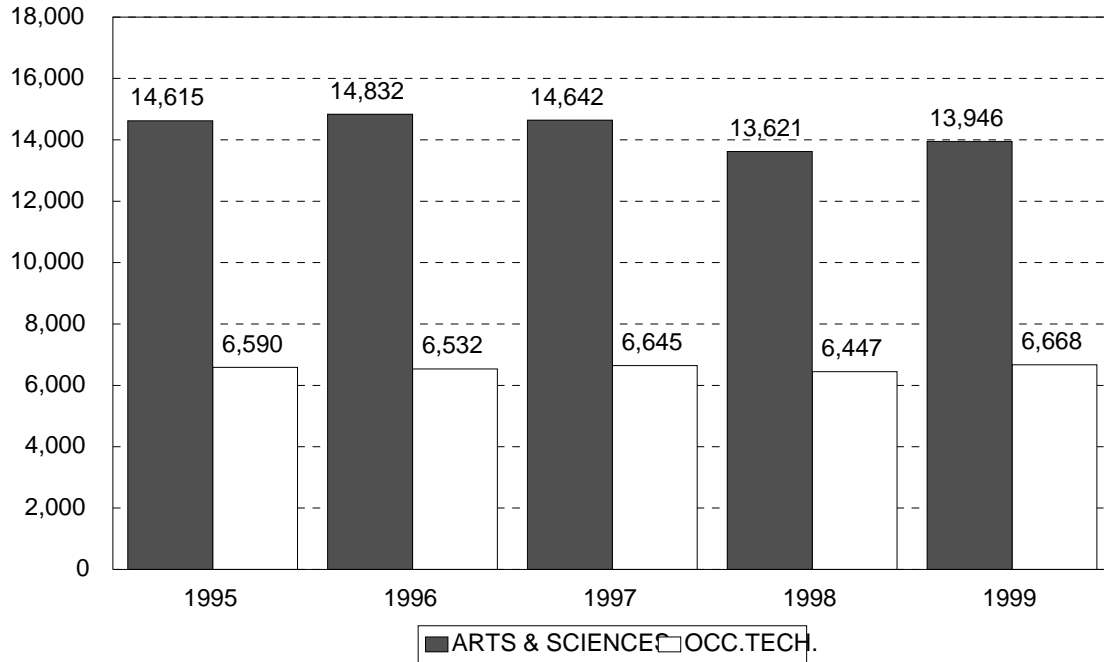
SOURCE: CBM001

BY ETHNICITY FALL 1995-1999



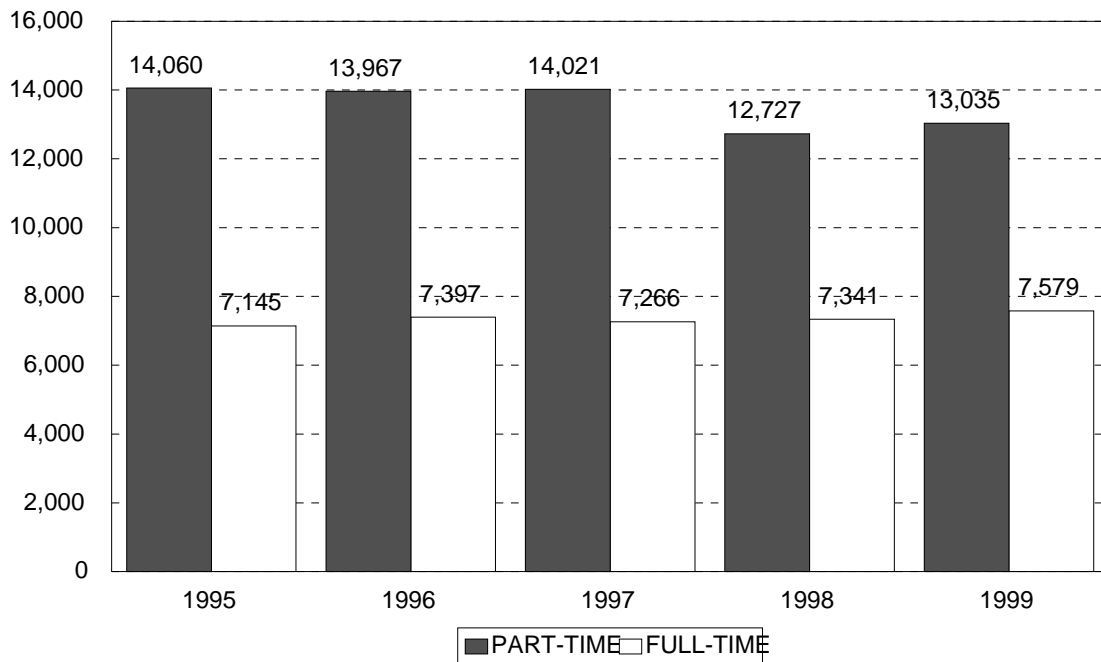
SOURCE: CBM001

BY DIVISION FALL 1995-1999



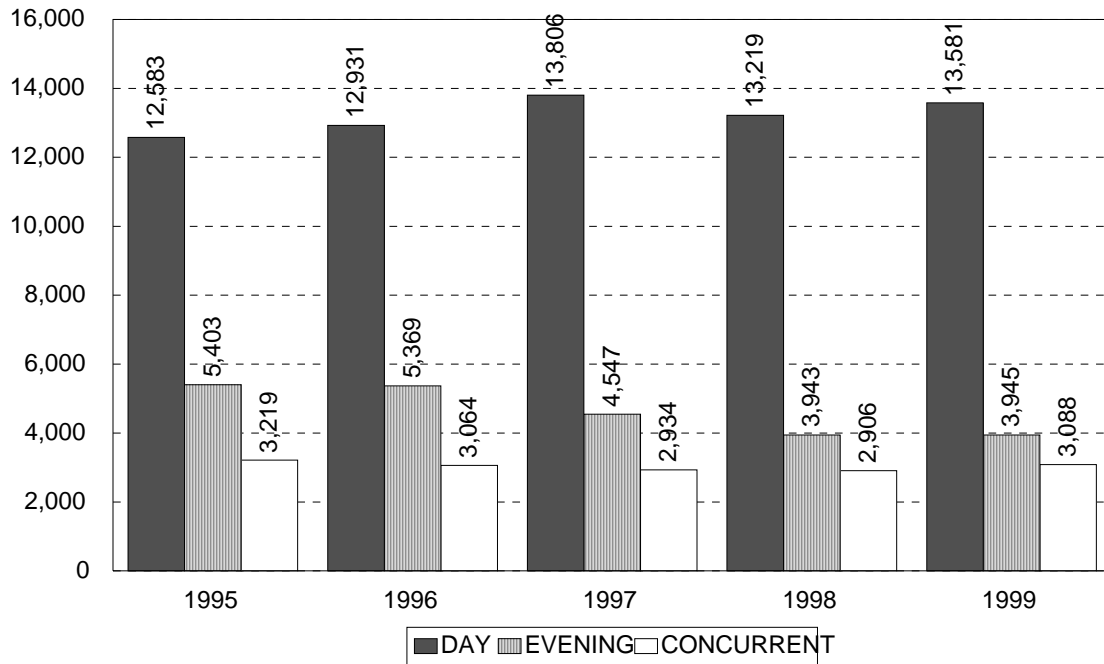
SOURCE: CBM001

PART-TIME VS. FULL-TIME FALL 1995-1999



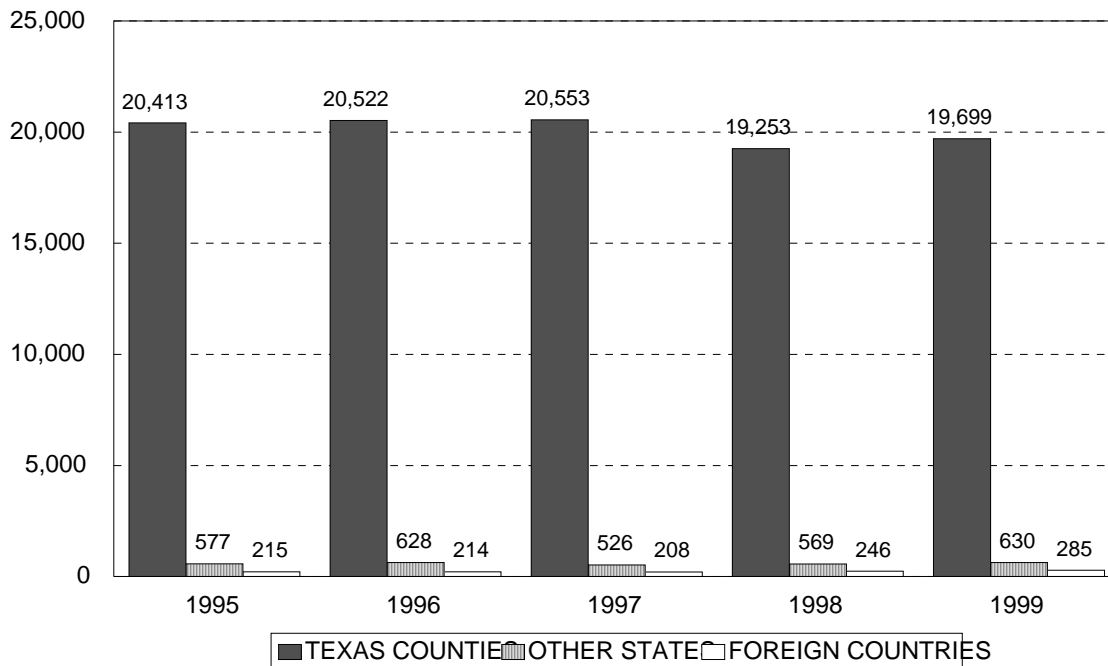
SOURCE: CBM001; RCA003

DAY VS. EVENING FALL 1995-1999



SOURCE: CBM001; RCA003

BY RESIDENCY FALL 1995-1999



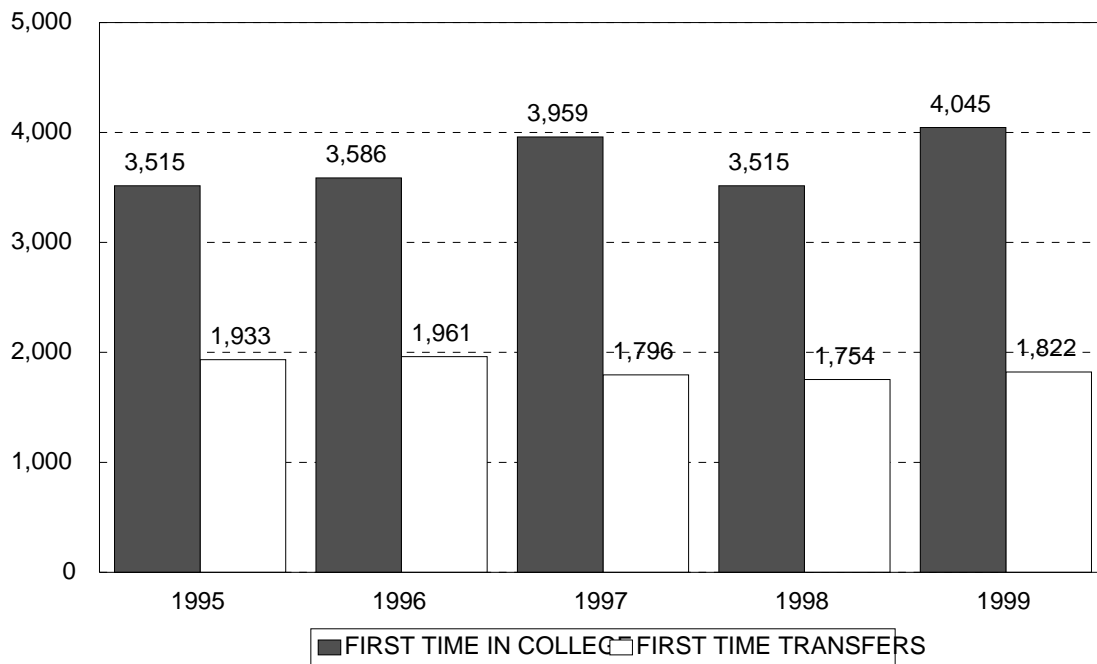
SOURCE: CBM001

BY AGE FALL 1995-1999

AGE	1995	1996	1997	1998	1999
17 & UNDER	314	591	1,128	824	1,148
18	1,795	1,687	1,752	1,743	1,908
19 – 21	6,004	6,204	5,972	5,657	5,756
22 – 24	3,630	3,507	3,493	3,260	3,307
25 – 30	3,937	3,885	3,834	3,726	3,720
31 – 35	2,170	2,136	1,924	1,706	1,604
36 – 50	3,012	3,010	2,825	2,821	2,815
51 – 64	325	329	341	316	348
65 & OVER	18	15	18	15	8
AVG. AGE	26.5	26.3	26.0	26.1	25.9

SOURCE: CBM001

FIRST TIME STUDENTS FALL 1995-1999



SOURCE: CBM001

CONTACT HOURS FALL & SPRING SEMESTERS 1995-2000

SEMESTER	ACADEMIC	OCC/TECH	TOTAL
FALL 1995	2,694,448	699,620	3,394,068
SPRING 1996*	2,509,600	805,382	3,314,982
FALL 1996	2,717,872	710,484	3,428,356
SPRING 1997*	2,523,216	815,938	3,339,154
FALL 1997	2,678,912	693,920	3,372,832
SPRING 1998*	2,454,448	831,504	3,285,952
FALL 1998	2,563,056	709,776	3,272,832
SPRING 1999*	2,360,928	830,448	3,191,376
FALL 1999	2,612,240	707,904	3,320,144
SPRING 2000*	2,455,728	838,240	3,293,968

SOURCE: Summary Table prepared by Records and Reports based on CBM004; *includes Fall Flex II terms

CONTACT HOURS SUMMERS I & II 1996-2000

SEMESTER	ACADEMIC	OCC/TECH	TOTAL
SUM I 1996*	661,760	242,976	904,736
SUM II 1996	296,496	34,464	330,960
SUM I 1997*	664,672	249,646	914,318
SUM II 1997	315,024	38,636	353,660
SUM I 1998*	646,208	242,128	888,336
SUM II 1998	312,416	30,950	343,366
SUM I 1999*	616,784	274,296	891,080
SUM II 1999	293,840	30,496	324,336
SUM I 2000*	625,040	247,680	872,720

SOURCE: Summary Table prepared by Records and Reports based on CBM004; *includes Spring Flex II terms

Note: Summer II 2000 certified data not available in time for publication.

DISTANCE EDUCATION

1999-2000

HIGHLIGHTS

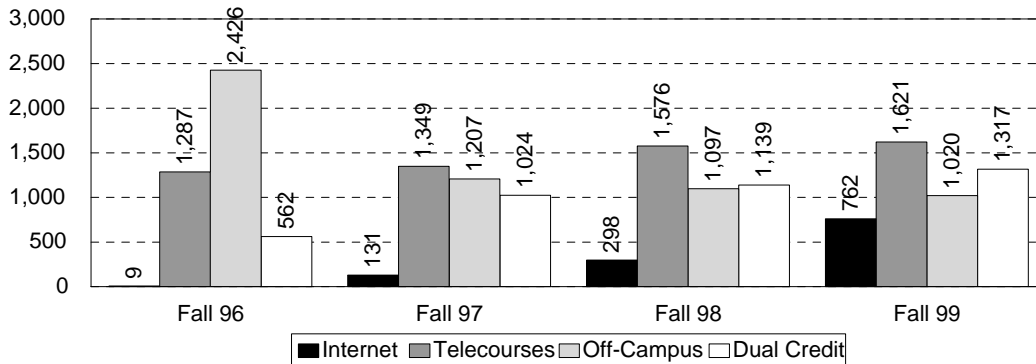
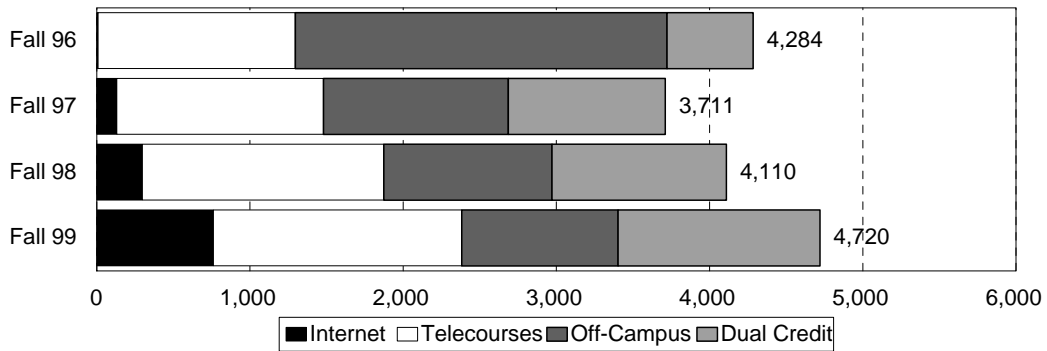
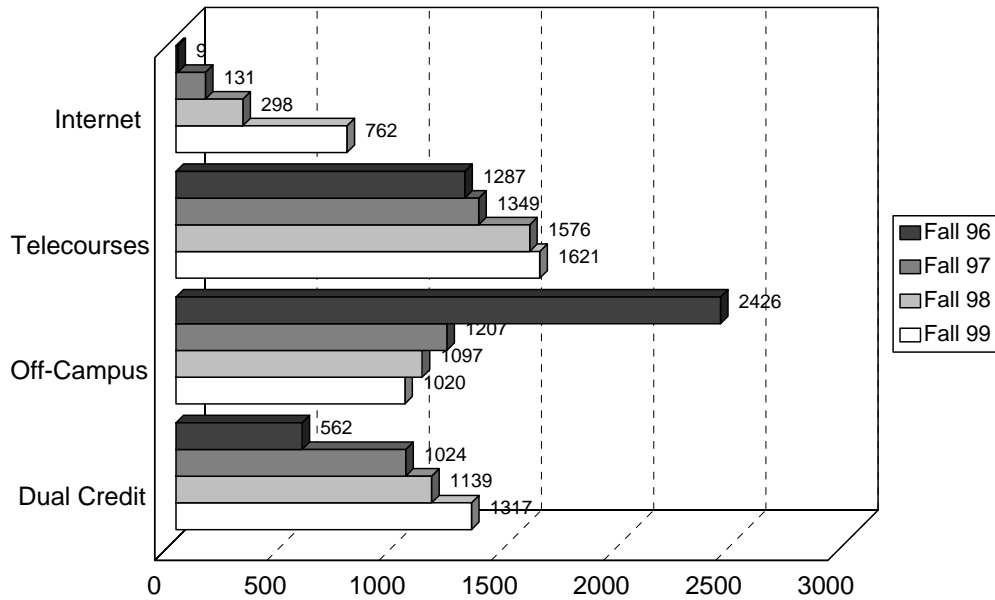
- End-of-year productivity totals show the Distance Education Unit enrolled 9,133 students (in Fall 1999, Spring 2000, Flex II Spring 2000, and Summer I & II 2000) surpassing last year's totals.
- The Distance Education Unit joined the New Braunfels, Seguin and San Antonio North Chamber of Commerce in its efforts to respond to the educational needs of the business community.
- San Antonio College collaborated with Coastal Bend College and served as the provider of Internet instruction to approximately 50 Coastal Bend Community College students.
- The Distance Education Unit joined the Virtual College of Texas (VCT).
- San Antonio College hosted the CEO and Operations Director of the Virtual College of Texas in August 2000 and made a presentation on the operational aspects of the VCT.
- San Antonio College developed 20 new Internet courses bringing the total to 49 Internet courses.
- In support of institutional effectiveness measures, Distance Education surveyed students enrolled in Internet, telecourses, and off-campus courses to measure their satisfaction with Distance Education instruction and student support services throughout the academic year of 1999-2000.
- Distance Education refined its website to better serve distant learners and instituted a Distance Education self-assessment survey. It also created easy links to Student Support Services, Admissions and Records, Tutoring Services, and the Learning Resource Center.
- Distance Education secured a partnership with the Marriott Riverwalk Hotel to open a Distance Education Downtown Center for its employees and other employees of the downtown area. The SAC Downtown Center will open in Fall 2000.

DISTANCE EDUCATION ENROLLMENT -- FALL 1996 TO FALL 1999

	Fall 96	Fall 97	Fall 98	Fall 99
Internet	9	131	298	762
Telecourses	1,287	1,349	1,576	1,621
Off-Campus	2,426	1,207	1,097	1,020
Total Internet, Telecourse, Off-campus	3,722	2,687	2,971	3,403
Dual Credit:				
Alamo Heights High School	140	143	143	142
Bandera High School		24	45	90
BISD				32
Canyon High School	20	52	56	75
Centerpoint High School		13	11	14
Edison High School	23	42	5	26
Harlandale High School	28	17	6	5
Highlands High School			30	
McCollum High School				19
New Braunfels High School	171	176	23	55
North East Ind. School District		453	545	572
Northside Ind. School District		61	99	96
Tivy High School Kerrville	151	39	176	140
SAC	29	4		51
Total Dual Credit	562	1,024	1,139	1,317
TOTAL DISTANCE EDUCATION	4,284	3,711	4,110	4,720

SOURCE: Evening, Weekend & Distance Education Division

DISTANCE EDUCATION ENROLLMENT -- FALL 1996 TO FALL 1999



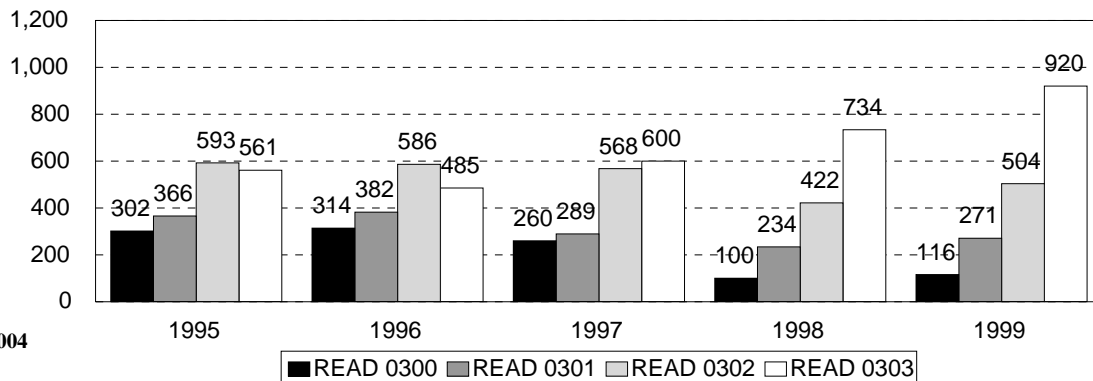
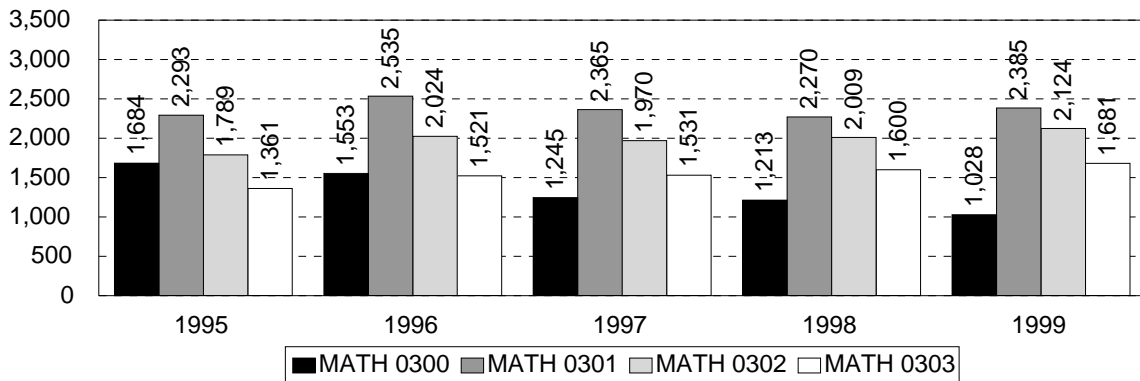
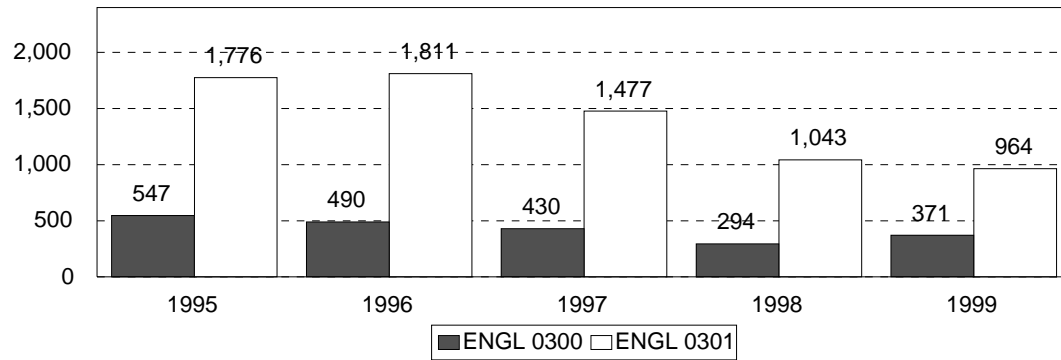
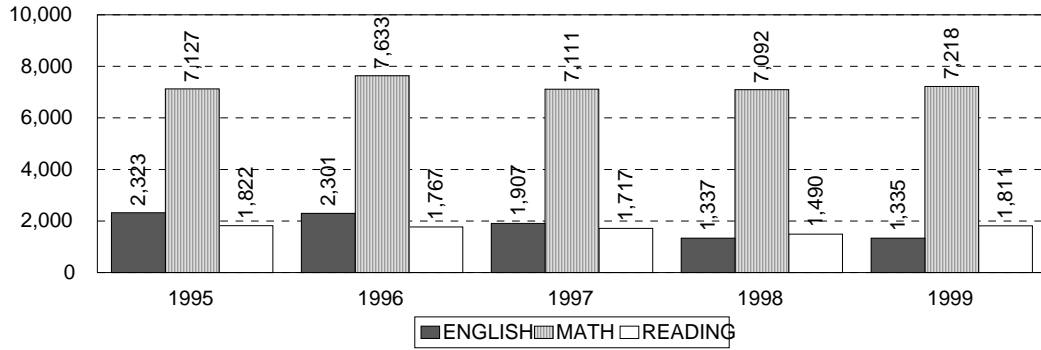
SOURCE: Evening, Weekend & Distance Education Division

**DEVELOPMENTAL EDUCATION
FALL SEMESTERS 1995-1999**

COURSE		1995	1996	1997	1998	1999
ENGL 0300	ENROLLMENT SECTIONS	547 25	490 23	430 19	294 16	371 18
ENGL 0301	ENROLLMENT SECTIONS	1,776 85	1,811 83	1,477 69	1,043 53	964 48
TOTAL	ENROLLMENT SECTIONS	2,323 110	2,301 106	1,907 88	1,337 69	1,335 66
MATH 0300	ENROLLMENT SECTIONS	1,684 65	1,553 62	1,245 50	1,213 51	1,028 46
MATH 0301	ENROLLMENT SECTIONS	2,293 88	2,535 96	2,365 93	2,270 87	2,385 84
MATH 0302	ENROLLMENT SECTIONS	1,789 64	2,024 77	1,970 76	2,009 75	2,124 83
MATH 0303	ENROLLMENT SECTIONS	1,361 48	1,521 57	1,531 57	1,600 58	1,681 71
TOTAL	ENROLLMENT SECTIONS	7,127 265	7,633 292	7,111 276	7,092 271	7,218 284
READ 0300	ENROLLMENT SECTIONS	302 16	314 18	260 14	100 7	116 6
READ 0301	ENROLLMENT SECTIONS	366 21	382 22	289 16	234 15	271 14
READ 0302	ENROLLMENT SECTIONS	593 28	586 29	568 26	422 21	504 24
READ 0303	ENROLLMENT SECTIONS	561 25	485 24	600 24	734 29	920 38
TOTAL	ENROLLMENT SECTIONS	1,822 90	1,767 93	1,717 80	1,490 72	1,811 82
TOTAL	ENROLLMENT SECTIONS	11,272 465	11,701 491	10,735 444	9,919 412	10,364 432

SOURCE: CBM004

**DEVELOPMENTAL EDUCATION
FALL SEMESTERS 1995-1999**



SOURCE: CBM004

**CONTINUING EDUCATION & WORKFORCE DEVELOPMENT
ANNUAL REPORT
1999-2000**

HIGHLIGHTS

- Continuing Education enrolled over 16,400 students, reported 428,225 reimbursable contact hours, exceeding its five-year average for the second consecutive year, and recorded \$763,916 in tuition and fee revenues.
- Rich White, Program Manager for Business and Management programs, was elected Regional Representative for the Texas Administrators of Continuing Educators Association (TACE), South Region.
- The Division's Information/Advisement Specialist addressed college administrators and professional staff on the effective implementation and maintenance of List-Serve marketing at the annual TACE conference (April 17-19, 2000) in Austin, TX.
- The Division continued to build its presence on the World Wide Web by expanding on-line course offerings to over 250 courses this year.
- A committee was formed to spearhead a district-wide initiative to automate the course programming process designed to reduce time and eliminate processing errors.
- A new articulation agreement was established with the Protective Services Department. Students completing the division's Emergency Medical Technician training will now be entitled to 23 semester hours of college credit.
- The Workplace Spanish, Corporate Training and Legal Assisting certificate programs were revised to improve retention rates and reduce processing time and effort.
- The Planetarium launched a new "Limited Engagement" series as part of their improved marketing campaign. The "Search for Life in the Universe" premiered on January 14, 2000.
- The division upgraded three computer labs to support the system requirements to teach advanced programming languages and graphic animation courses.
- The division is supporting the professional development needs of district employees by providing management training to the District Finance Office, first aid classes for the Department of Public Safety and customer service training for the Bursar.
- A Human Resource Institute was developed to address professional development needs of the local business community.
- The role and scope of the the Adult Re-Entry Program was redefined in accordance with the new Workforce Initiative Act legislation relative to tracking, case management, and interagency collaboration.

CONTRACTS

- The division cultivated a series of contract training opportunities that generated over \$13,000 in revenue with the University Hospital System. Courses included Basic Skills, English as a Second Language, and the Certified Professional Secretary test preparation.
- The Emergency Medical Services program secured a \$39,000 contract with Fort Sam Houston to provide paramedic training.
- The Law Enforcement Academy acquired a new contract to deliver intoxilyzer training to the Austin Police Department.
- The Division pursued two new opportunities in the manufacturing sector: a \$10,000 contract to provide Zenger Miller training to Oglebay Norton Corporation, an industrial sand manufacturer, and a \$5,000 contract with Carmus International, a manufacturer of beverage accessories.

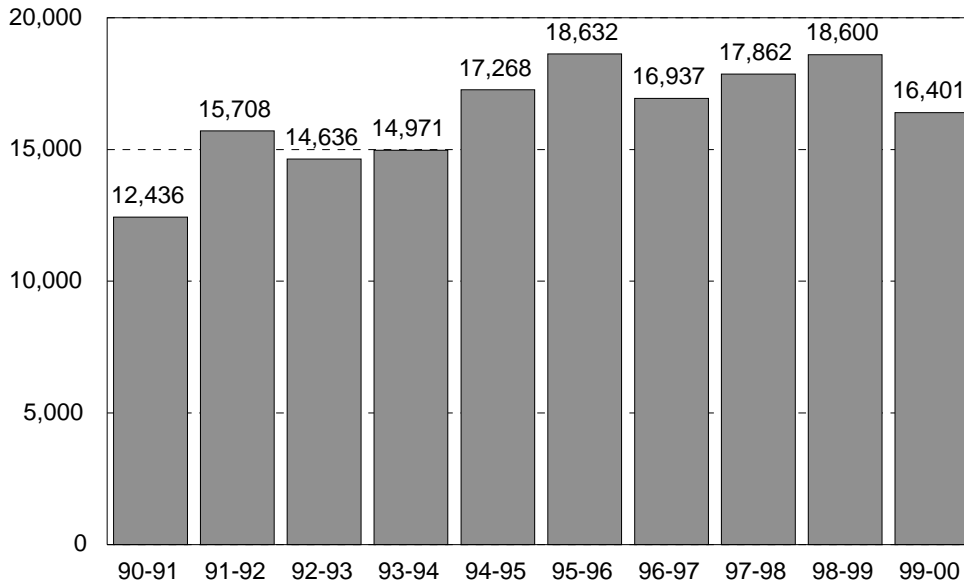
PARTNERSHIPS

- A new partnership was formed with Creative Minds and the Continuing Nurse Education program to deliver Type I contact hour classes in the healing arts.
- Our current partnership with Wackenhut, Inc. was expanded to include correctional officer training for privately run prisons.
- The division formed a new partnership with the local chapter of the American Society for Training and Development by sponsoring a technology fair attended by training and development professionals from throughout southern Texas.
- A partnership was formed with the Society of Human Resource Management to deliver human resource certification training.
- Other collaborations involved this division and the Foreign Languages, Biology and Chemistry Departments, and the Women's Center.

CONTINUING EDUCATION - CONTRACT COMPANIES 1999-2000

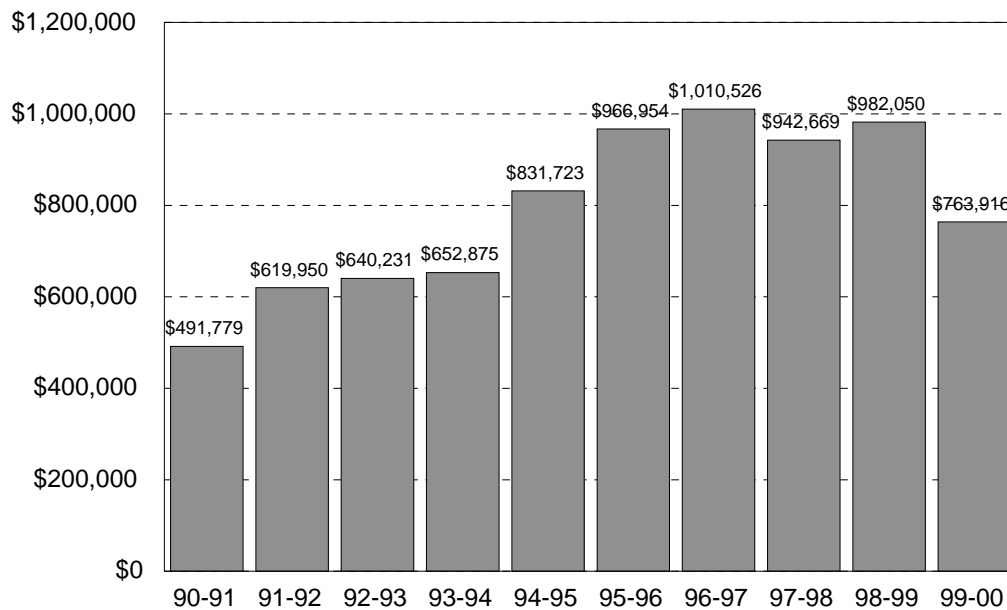
Baker Surveying & Engineering	Kimbrough Oil Service
Baptist Temple Day Care	Kindercare Learning Center
Bexar County Adult Probation	Lackland AFB
Bexar County Appraisal District	Luby's Cafeterias, Inc.
Bexar County Care, Inc.	Northeast I.S.D.
Bexar County Personnel	Omne Mental Health Services
ButterKrust Bakery, Inc.	OMNI Insurance Group
Caldwell County Sheriff's Department	Pik Nik Foods
Catholic Campus Ministry Office	Plumbers and Pipe Fitters
City of Kerrville	Randolph Air Force Base
City of San Antonio	River City EMS
City of Shavano Park	San Antonio Water System
Council of Research	Sea World
Country Home Learning Center	Southwestern Bell Telephone
Creative Minds Unlimited	St. Peter's St. Joseph's
Edwards Aquifer Authority	The Center for Health Care Services
EG&G Kelly Distribution Center	TMSSC
George Muery Services	UNITEC
Gillespie County EMS	University Health System
H.E.B. Risk Management	University of Texas Health System
Handy Andy	USAA
Harris Corporation	VIA Metropolitan Transit
KCI	Visiting Nurse Assoc. & Hospice
KEI Consultants	YMCA

**CONTINUING EDUCATION
TOTAL ENROLLMENT 1990-1991 TO 1999-2000
(reimbursable & nonreimbursable courses)**



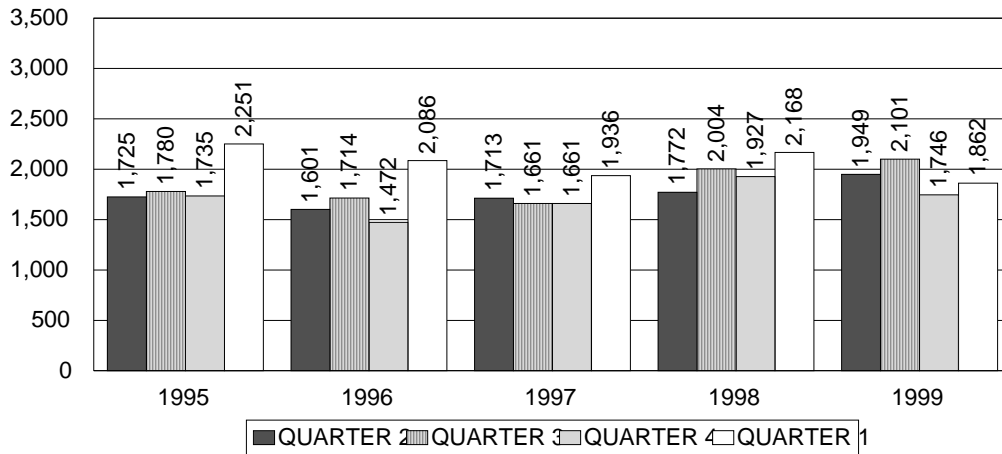
SOURCE: Division of Continuing and Workforce Development
1999-2000 figures are projected.

**CONTINUING EDUCATION
TUITION/FEE REVENUE 1990-1991 to 1999-2000
(reimbursable & nonreimbursable courses)**

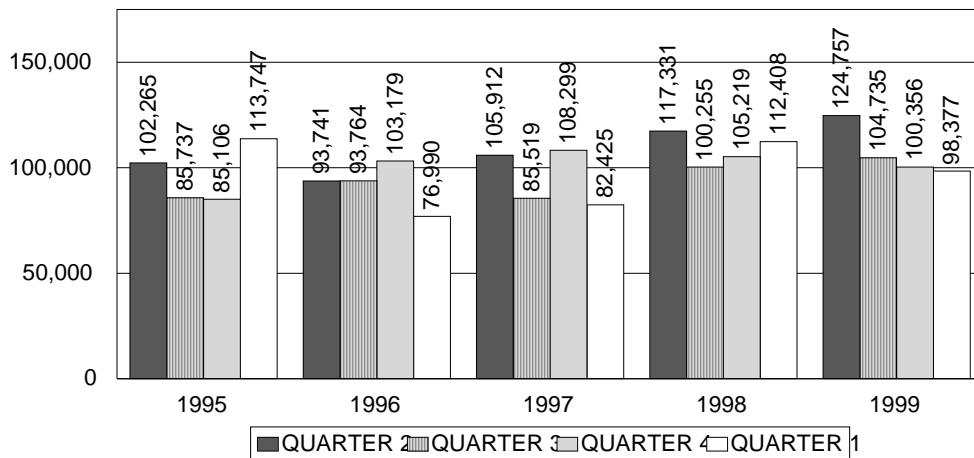


SOURCE: Division of Continuing Education & Workforce Development
1999-2000 figures are projected.

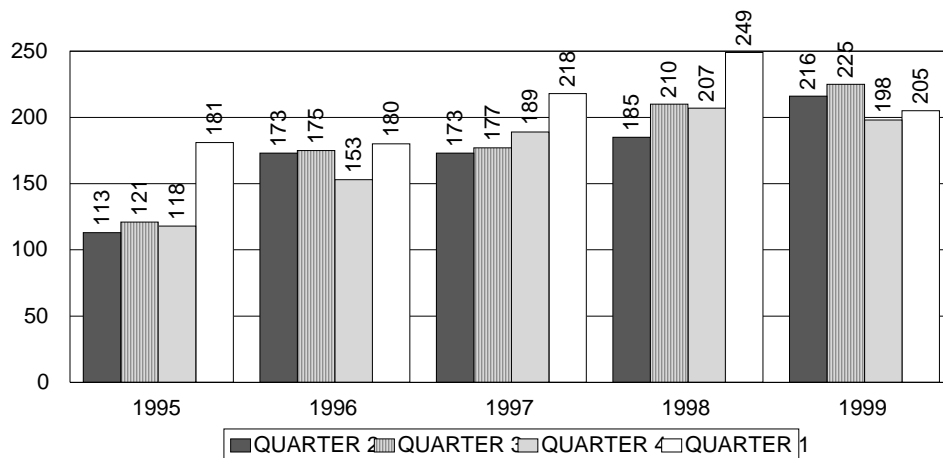
**CONTINUING EDUCATION 1995-1999
HEADCOUNT TRENDS BY QUARTER (reimbursable courses)**



CONTACT HOUR TRENDS BY QUARTER (reimbursable courses)



CLASS TRENDS BY QUARTER (reimbursable courses)



SOURCE: CBM00C Summary Report

CONTENTS – PERSONNEL PROFILE

FACULTY

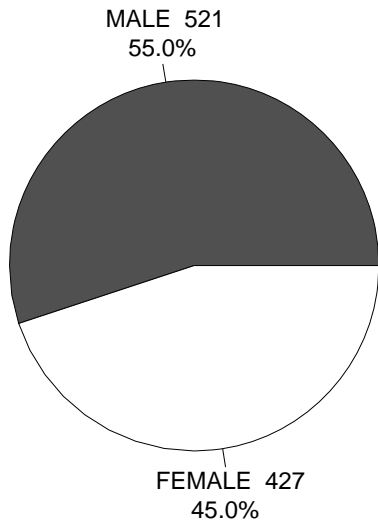
Faculty Profile (Gender, Ethnicity, Age, Highest Degree Earned), Fall 199952
Full-Time Faculty, Fall 199953
Faculty Rank, Fall 199953

FULL-TIME EMPLOYEES

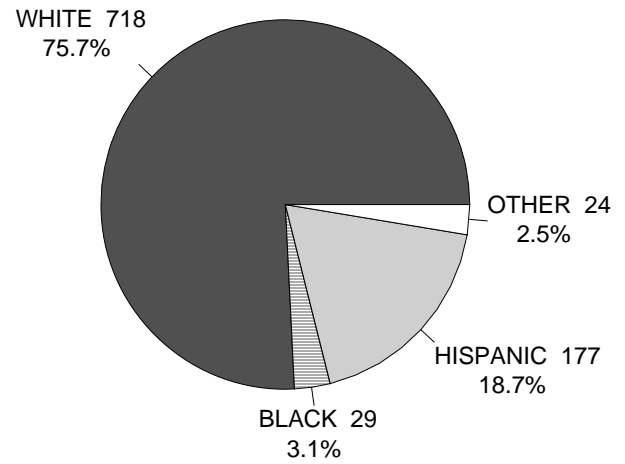
Full-Time Employee Profile, Fall 199954
By Gender & Classification, Fall 199954
By Ethnicity & Classification, Fall 199954

**FACULTY PROFILE – FALL 1999
948 TOTAL FACULTY**

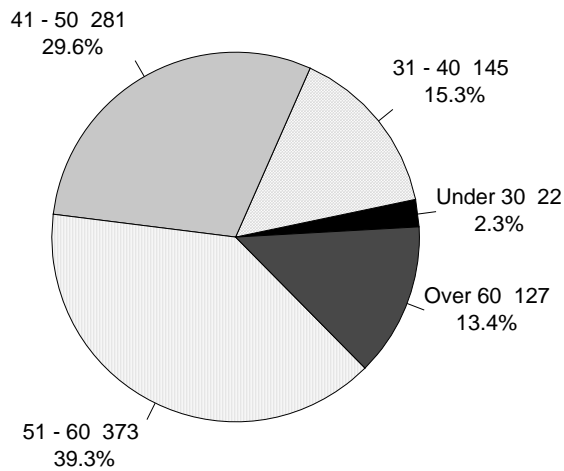
GENDER



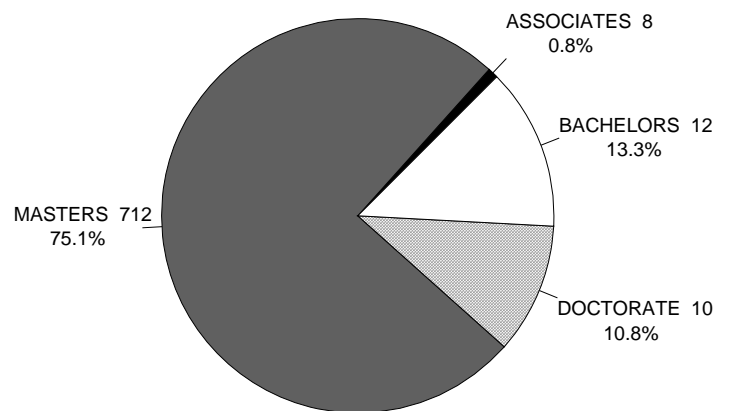
ETHNICITY



AGE



HIGHEST DEGREE EARNED



SOURCE: CBM008, 2/25/00

Includes both tenure-track and adjunct faculty

FULL-TIME FACULTY – FALL 1999

	WHITE	BLACK	HISPANIC	OTHER	TOTAL
FEMALE	140 33.2%	11 2.6%	41 9.7%	2 0.5%	194 46.0%
MALE	169 40.0%	7 1.7%	44 10.4%	8 1.9%	228 54.0%
TOTAL	309 73.2%	18 4.3%	85 20.1%	10 2.4%	422 100.0%

SOURCE: HFA945, 01/21/00

Note: Percents are percents of total

FACULTY RANK – FALL 1999

RANK	NUMBER	PERCENT
PROFESSOR	113	11.9%
ASSOCIATE PROFESSOR	55	5.8%
ASSISTANT PROFESSOR	47	5.0%
INSTRUCTOR	112	11.8%
ADJUNCT FACULTY	618	65.2%
VISITING TEACHER	3	0.3%
TOTAL	948	100.0%

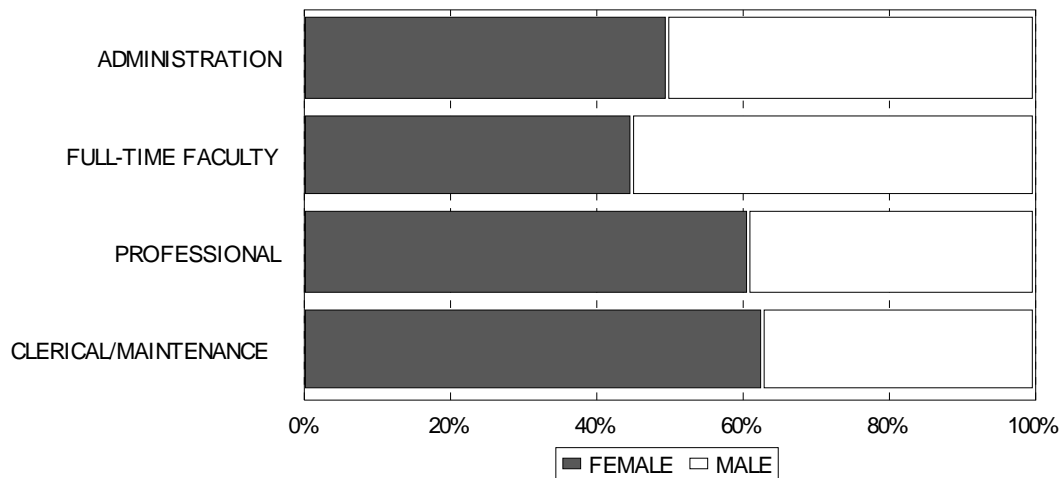
SOURCE: CBM008, 2/25/00

Includes both tenure-track and adjunct faculty

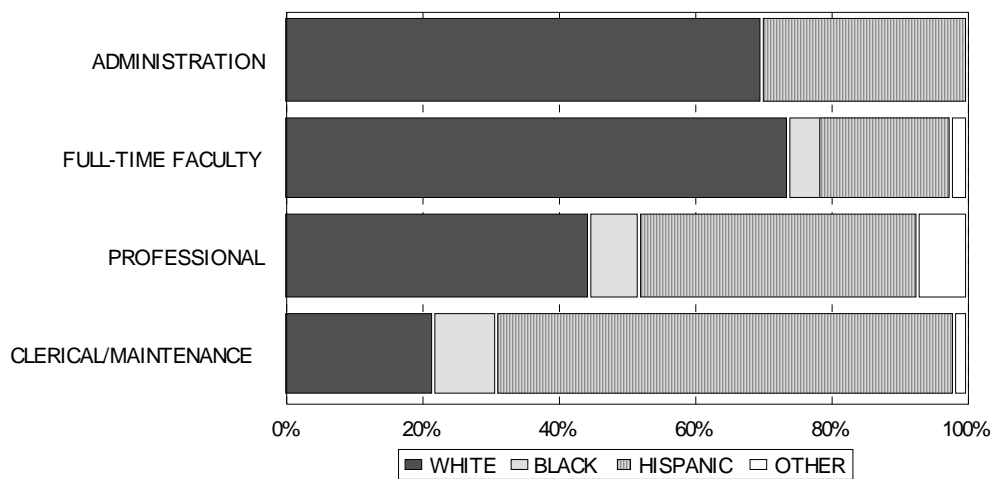
FULL-TIME EMPLOYEE PROFILE – GENDER & ETHNICITY FALL 1999

TYPE	WHITE	BLACK	HISPANIC	OTHER	FEMALE	MALE	TOTAL
Administrators	7 70.0%	0 0.0%	3 30.0%	0 0.0%	5 50.0%	5 50.0%	10 100%
Tech/Clerical/ Maintenance	68 21.7%	24 7.6%	215 68.5%	7 2.2%	203 64.6%	111 35.4%	314 100%
Full-time Faculty	309 73.2%	18 4.3%	85 20.1%	10 2.4%	194 46.0%	228 54.0%	422 100%
Professional	26 44.1%	4 6.8%	25 42.4%	4 6.8%	35 59.3%	24 40.7%	59 100%
TOTAL	410 50.9%	46 5.7%	328 40.7%	21 2.6%	437 54.3%	368 45.7%	805 100%

EMPLOYMENT BY GENDER & CLASSIFICATION FALL 1999



EMPLOYMENT BY ETHNICITY & CLASSIFICATION FALL 1999



SOURCE: HFA945, 1/21/00

CONTENTS – FINANCIAL PROFILE

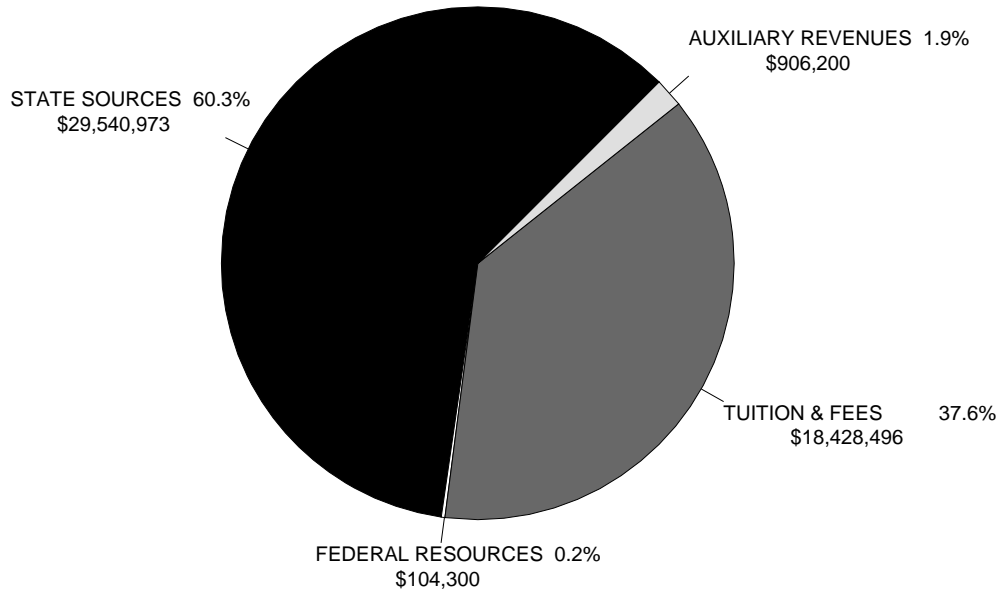
Tuition and Fees 1999-2000.....56
Base Revenues 1999-200056
Summary of Revenue for 1999-200057
Summary of Expenditures for 1999-2000.....57

ACCD 1999-2000 TUITION & FEES *

SEMESTER HOURS TAKEN	TEXAS RESIDENTS				NON-TEXAS RESIDENT/INTERNAT'L STUDENTS	
	IN-DISTRICT		OUT-OF-DISTRICT		TUITION	GEN FEE
	TUITION	GEN FEE	TUITION	GEN FEE		
1 – 6	\$120	\$60	\$230	\$60	\$460	\$60
7	168	65	322	65	644	65
8	192	65	368	65	736	65
9	216	65	414	65	828	65
10	240	65	460	65	920	65
11	264	65	506	65	1012	65
12	288	65	552	65	1104	65
13	312	65	598	65	1196	65
14	336	65	644	65	1288	65
15	360	65	690	65	1380	65
16	384	65	736	65	1472	65
17	408	65	782	65	1564	65
18	432	65	828	65	1656	65
19	456	65	874	65	1748	65
20	480	65	920	65	1840	65
21	504	65	966	65	1932	65

*As of Fall 1998 Semester

1999-2000 SAN ANTONIO COLLEGE BASE REVENUES



SOURCE: 1999-2000 ACCD Operating Budget Summary

SUMMARY OF REVENUES, 1999-2000

SAN ANTONIO COLLEGE REVENUES	
State Sources	\$29,540,973
Federal Sources	\$104,300
Tuition	\$12,425,487
Lab & Other Fees	2,873,123
General Fees	3,119,886
Total Tuition and Fees	\$18,418,496
Other Income	\$10,000
Total Educational & General Revenue	\$48,073,769
Auxiliary Enterprises	\$906,200
GRAND TOTAL REVENUES	\$48,979,969

SOURCE: 1999-2000 ACCD Operating Budget Summary

SUMMARY OF EXPENDITURES, 1999-2000

SAN ANTONIO COLLEGE EXPENDITURES	
PERSONNEL:	
Regular	\$28,784,010
Temporary Lecturer and Part-time Faculty	9,692,347
Temporary Other	1,266,556
TOTAL PERSONNEL	\$39,742,913
GENERAL:	
Travel	\$129,903
Employment Development	17,602
Basic Telephone Services	125,986
Instructional Printing	105,833
Lab Supplies and Expenses	169,728
General Expenses	4,561,271
Fringe Benefits	4,742,143
Scholarships	1,797,275
Mandatory Transfers	208,573
Charge Backs to Depart	(489,096)
TOTAL GENERAL	\$11,369,218
Fixed Assets	\$ 26,000
Capitalized Instructional Equipment	1,043,417
Library Books	500,000
Computer Services	1,015,470
TOTAL EXPENDITURES AND TRANSFERS	\$53,697,018

SOURCE: 1999-2000 ACCD Operating Budget Summary