
San Antonio College

2002-2003 FACT BOOK

Prepared by Office of
Institutional Research

AUGUST 2003

**San Antonio College
1300 San Pedro Avenue
San Antonio, Texas 78212
(210) 733-2105**

<http://www.accd.edu/sac/ir&e/index.htm>

SAC FACT BOOK CONTENTS

Introduction.....	v
COLLEGE PROFILE.....	
OVERVIEW	
History	2
Mission Statement	3
Outstanding Former Students	4
Certificate & Degree Programs	5
Accreditation and Affiliations	9
ORGANIZATIONAL CHARTS	
San Antonio College	10
Arts & Sciences; Professional & Technical Education; Student Affairs	11
Evening, Weekend & Distance Education; Learning Resources; Continuing Education Training Network	12
DIVISIONS	
Arts & Sciences	13
Professional & Technical Education	13
Continuing Education Training Network	14
Evening, Weekend & Distance Education	14
Learning Resources.....	15
INSTITUTIONAL RESOURCES	
Instructional Technologies.....	17
Technology Center	18
Student Learning Assistance Center.....	19
STUDENT PROFILE.....	
GENERAL INFORMATION	
Gender, Ethnicity, Age, Major, Hours Enrolled, Day vs. Evening.....	21
Top Ten:	
Academic Majors	22
Vocational Majors	22
Feeder High Schools	22
Zip Codes of Residence	23
Counties of Residence	23
States of Residence.....	23
Student Objective in Attending San Antonio College.....	24
Intended Duration of Enrollment	24
Previous College Experience.....	24
Student Employment Status.....	24
Financial Aid and Scholarship Awards.....	25
ACADEMIC ACHIEVEMENT	
Grade Distribution, Fall 2002.....	26
Grade Distribution Trends, Fall Semesters 1998-2002	26
Fall to Fall Retention by Ethnicity, 1996-1997 to 2001-2002	27
Retention of First-Time, Full-Time Freshmen by Ethnicity, Fall 2001	27

Summary Degree Data	28
Awards, 1997-1998 to 2001-2002	28
Ethnicity, 1997-1998 to 2001-2002.....	28
Student Retention by Declared Major, 2001 -2002.....	29

ENROLLMENT TRENDS.....

Credit Programs:

Fall Semesters 1993-2002 and Spring Semesters 1993-2002.....	39
Summer I Sessions 1993-2002 & Summer II Sessions 1993-2002.....	40
Enrollment Trends by Classification, Fall 1998-2002 (Summary Statistics).....	41
Gender.....	42
Ethnicity.....	42
Division.....	43
Part-Time vs. Full-Time	43
Day vs. Evening	44
Residency	44
Age.....	45
First-Time Students.....	45
Contact Hours, Fall & Spring Semesters 1998-2003.....	46
Contact Hours, Summers I & II 1998-2002.....	46

Distance Education:

Dual Credit, Fall 1998 to Fall 2002.....	47
Distance Education Enrollment, Fall 1998 to Fall 2002.....	48

Developmental Education:

Enrollment Fall Semesters 1998-2002	49
Trends in Developmental English.....	50
Trends in Developmental Math	50
Trends in Developmental Reading.....	50

Continuing Education Training Network:

Total Enrollment 1997-2002.....	51
Tuition/Fee Revenue 1997-2002.....	51
Non-Credit Workforce Education Unduplicated Enrollment, Academic Years 1998-1999 to 2000-2001	51
Headcount Trends by Quarter 1998-2002.....	52
Contact Hour Trends by Quarter 1998-2002.....	52
Class Trends by Quarter 1998-2002.....	52

STATEWIDE TRENDS.....

A COMPARISON OF SAN ANTONIO COLLEGE & STATEWIDE ENROLLMENT TRENDS:

TOTAL ENROLLMENT

Unduplicated Number of Students Enrolled At Any Time During Academic Year

By Ethnicity and Gender, 2001-200254

By Type of Major, 1999-2000 to 2001-200255

By Number of Hours Enrolled (San Antonio College), 2001-200256

By Special Populations, 2001-200257

FIRST-TIME IN COLLEGE ENROLLMENT

First-Time-in-College Students Receiving Remediation, Fall 200058

By Gender.....58

By Ethnicity58

By Full-Time/Part-Time Status 58

COHORT PROGRESSION ANALYSIS OF FTIC STUDENTS BY TYPE OF MAJOR

Fall Semester, 1996.....59

Fall Semester, 199759

Fall Semester, 1998.....59

PERSONNEL PROFILE.....

FACULTY

Faculty Profile (Gender, Ethnicity, Age, Highest Degree Earned, Contact Hrs & Sections Taught), Fall 200261

Full-Time Faculty, Fall 200262

Faculty Rank, Fall 2002.....62

FULL-TIME EMPLOYEES

Full-Time Employee Profile, Fall 200263

By Gender & Classification, Fall 200263

By Ethnicity & Classification, Fall 200263

FINANCIAL PROFILE.....

Tuition and Fees 2002-200365

Base Revenues 2002-200365

Summary of Revenue 2002-200366

Summary of Expenditures 2002-200366

The San Antonio College Fact Book provides general statistical information about the College which may be useful to those engaged in planning, preparing reports, writing grant proposals, or other endeavors within the College.

It is important for the reader to be aware that data presented in this publication may differ slightly from statistics found in other College and District reports. Such variances may result from differences in the source of information used, the date on which the report was generated, or the reporting period included in the report. For these reasons, the source of the information in each table and graph is cited. Trends should be tracked using identical sources each semester.

CONTENTS – COLLEGE PROFILE

COLLEGE PROFILE.....

OVERVIEW

History2

Mission Statement3

Outstanding Former Students4

Certificate & Degree Programs5

Accreditation and Affiliations9

ORGANIZATIONAL CHARTS

San Antonio College10

Arts & Sciences; Professional & Technical Education; Student Affairs11

Evening, Weekend & Distance Education; Learning Resources; Continuing Education Training Network12

DIVISIONS

Arts & Sciences13

Professional & Technical Education13

Continuing Education Training Network14

Evening, Weekend & Distance Education14

Learning Resources15

INSTITUTIONAL RESOURCES

Instructional Technologies17

Technology Center18

Student Learning Assistance Center.....19

HISTORY

San Antonio College was established as University Junior College in September 1925, under the auspices of the University of Texas. The following year control of the college was transferred to the San Antonio Independent School District and the name was changed to San Antonio Junior College. Following passage of state legislation authorizing junior college districts, the San Antonio Union Junior College District was formed in 1945 and in 1946 assumed control of San Antonio Junior College and its sister college, St. Philip's Junior College. In 1948, San Antonio Junior College's name was changed to San Antonio College, and in 1951, the college was moved to its present location on San Pedro Avenue. Five hundred students were enrolled at that time. The Southern Association of Colleges and Schools granted accreditation to the college in 1955.

In the late 1960s San Antonio College became a comprehensive community college by expanding offerings in Professional and Technical courses and by assuming the San Antonio Independent School District's continuing education program. The name of the college district was changed to San Antonio Community College District in 1978 and in 1982 the district was renamed the Alamo Community College District.

In support of the mission of the Alamo Community College District, San Antonio College responds to Bexar County's diverse community by providing high quality general education, liberal arts and sciences, career education, continuing education and developmental education. The college has an average semester enrollment of 21,000 credit students. San Antonio College is the largest single-campus community college in Texas and one of the largest in the United States.

MISSION STATEMENT

San Antonio College – responsive education through excellence, accessibility and diversity. San Antonio College is a public community college, which provides for and supports the educational and lifelong learning needs of a multicultural community. As a leader in education, San Antonio College is committed to excellence in helping students reach their full potential by developing their academic competencies, critical thinking skills, communication proficiency, civic responsibility and global awareness.

San Antonio College fulfills its mission by offering the following:

- Transfer education designed to provide students with the first two years of the bachelor's degree.
- General education courses in the liberal arts and sciences to support all college degree programs.
- Career preparation provided through a wide range of programs to prepare students for immediate employment.
- Developmental studies for students needing to bring their basic skills to a level appropriate for college work.
- Continuing education to offer a variety of training, licensure and professional programs.
- Academic support services that include a comprehensive learning resource center and basic skills activities that complement instruction.
- Student support services to provide assessment, advising, counseling, tutoring, financial assistance, and social and cultural activities for all students, including those with special needs.
- Promotion of cross-cultural understanding and appreciation through instructional and social activities that contribute to cultural awareness and interaction.
- Involvement of business, industry and professional groups in planning and revising educational programs to meet workforce needs.
- An environment conducive to learning through an attractive physical campus and wellness-oriented programs and services.
- Continuous assessment of programs and services and the utilization of results for improvement.
- Operation of the college within available fiscal resources to provide accountability to taxpayers of the Alamo Community College District.

OUTSTANDING FORMER STUDENTS

Henry B. Gonzalez (Congressman).....	1982-83
Blair Reeves (Judge).....	1983-84
Albert Bustamante (Congressman).....	1984-85
Dr. William Kirby (State Commissioner of Education).....	1985-86
Capt. Larry Pearson (Navy Test Pilot, Former Blue Angels Commander)	1986-87
Lisa Brown (Archaeologist).....	1987-88
Edward Prado (Judge).....	1987-88
Dr. Jerome Weynand (College President).....	1987-88
James R. Vasquez (Public School Superintendent).....	1988-89
Sarah Garrahan (Judge)	1988-89
Frank Gonzalez (Oceanographer)	1989-90
Nancy Klepper (Public School Educator).....	1989-90
Diane Gonzales (Journalist).....	1990-91
Bill Hayden (Founder/CEO CompuAdd).....	1990-91
Jesse Trevino (Artist).....	1991-92
Patsy Torres (Entertainer)	1992-93
Dr. Felix D. Almaraz (University Professor).....	1993-94
William Sinkin (Banker)	1993-94
Dr. Judith Ann Loreda (College Administrator)	1994-95
Steven C. Hilbig (Bexar County District Attorney).....	1994-95
Dr. Robert L. Jimenez (Psychiatrist).....	1995-96
Dr. Leo Sayavedra (University Administrator)	1995-96
Francis R. Scobee (Challenger Astronaut).....	1995-96
Tino Duran (Publisher of <i>La Prensa</i>).....	1996-97
Al A. Philippus (San Antonio Chief of Police)	1996-97
Dr. Cynthia G. Broderick (Public School Educator)	1997-98
Dr. Jesse T. Zapata (University Administrator).....	1997-98
Marinella Garcia-Murillo (Community Relations Specialist).....	1998-99
Dr. James V. McLean (Veterinarian)	1998-99
Dr. Martin Basaldua (Physician).....	1999-00
Ciro D. Rodriguez (Congressman)	1999-00
Oscar G. Hernandez (Community Services Administrator)	2000-01
Dr. Rodolpho Sandoval (University Administrator).....	2000-01
Sara Kleban Radin (Judge)	2001-02
Albert A. Ortiz (Chief of Police).....	2002-03
Norma S. Rodriguez (City Clerk)	2002-03

CERTIFICATE AND DEGREE PROGRAMS

ARTS & SCIENCES

AA DEGREES: ASSOCIATE IN ARTS IN AMERICAN SIGN LANGUAGE
 ASSOCIATE IN ARTS IN ARCHITECTURE
 ASSOCIATE IN ARTS IN ART
 ASSOCIATE IN ARTS IN BUSINESS ADMINISTRATION
 ASSOCIATE IN ARTS IN CHILD DEVELOPMENT
 ASSOCIATE IN ARTS IN CRIMINAL JUSTICE
 ASSOCIATE IN ARTS IN DRAMA
 ASSOCIATE IN ARTS IN GEOGRAPHICAL INFORMATION SYSTEMS
 ASSOCIATE IN ARTS IN INTERNATIONAL STUDIES
 ASSOCIATE IN ARTS IN JOURNALISM
 ASSOCIATE IN ARTS IN LIBERAL ARTS
 ASSOCIATE IN ARTS IN MUSIC
 ASSOCIATE IN ARTS IN PHOTOGRAPHY
 ASSOCIATE IN ARTS IN POLITICAL SCIENCE
 ASSOCIATE IN ARTS IN PSYCHOLOGY
 ASSOCIATE IN ARTS IN SOCIAL SERVICES
 ASSOCIATE IN ARTS IN SPEECH
 ASSOCIATE IN ARTS IN TEACHER EDUCATION

AS DEGREES: ASSOCIATE IN SCIENCE IN ENGINEERING
 ASSOCIATE IN SCIENCE IN MATHEMATICS

DISCIPLINES:

Accounting	Foreign Languages	Mathematics
Anthropology	American Sign Language	Mental Health
Anatomy	French	Music
Architecture	German	Nutrition
Art	Italian	Philosophy
Biological Sciences	Japanese	Photography
Business	Latin	Physical Education
Chemistry	Spanish	Political Science
Communications	Geography	Physics
Computer Science	Geographic Information Systems	Psychology
Earth Sciences	Geology	Reading
Economics	Health	Social Work
Education	History	Sociology
Engineering	Humanities	Speech
English	Interdisciplinary Studies	Theatre
Fine Arts	Journalism	Teaching Academy Preparation
	Kinesiology	Visual, Technical & Graphic Arts

CERTIFICATE AND DEGREE PROGRAMS

PROFESSIONAL & TECHNICAL EDUCATION

DEPARTMENT	PROGRAM	AWARD
ADMINISTRATIVE	Accounting Technology	AAS, CERT
ALLIED HEALTH TECHNOLOGIES	Dental Assisting Technology	AAS, CERT
	Medical Assisting Technology	AAS, CERT
	Medical Office Administrative Assistant	CERT
	Funeral Director	CERT
	Mortuary Science	AAS
AMERICAN SIGN LANGUAGE / INTERPRETER TRAINING	American Sign Language-Deaf Support Specialist Option	AAS
	Sign Language Interpreter Option	AAS
	Trilingual Interpreter	CERT
BUSINESS	Banking	AAS, CERT
	Banking & Financial Services	AAS
	Business Law Paralegal	CERT
	Business Management	AAS, CERT
	Financial Analysis	CERT
	Financial Management	AAS, CERT
	Financial Services Industry	CERT
	Human Resources Management	AAS, CERT
	International Business	AAS, CERT
	Labor Studies	CERT
	Leadership Public Sector	CERT
	Marketing Management	AAS, CERT
	Mortgage Banking	AAS, CERT
	Nonlawyer Advocacy	AAS
	Operations Management	CERT
	Paralegal Studies	AAS
	Public Administration	AAS
Real Estate Management	AAS, CERT	
Small Business Management	CERT	
CHILD DEVELOPMENT	Child Care Administration	CERT
	Child Development	AAS, CERT
	Child Development Associate	CERT
	Teacher Assistant	AAS, CERT
	Infant & Toddler Care	CERT
COMPUTER INFORMATION SYSTEMS TECHNOLOGY	Computer Database Specialist	AAS, CERT
	Computer Network Administration	AAS
	Computer Network Technician	CERT
	Computer Programming	AAS, CERT
	Computer Security Administration	AAS
	Oracle	CERT

DEPARTMENT	PROGRAM	AWARD
COMPUTER TECHNOLOGY / COURT REPORTING	Administrative Assistant	AAS
	Administrative Systems Technician	CERT
	Benefits & Compensation Manager	CERT
	Business Communications	CERT
	Computer Assistant	CERT
	Computer-Aided Transcription	AAS
	Computer Data Entry Technician	CERT
	Computer Help Desk Specialist	AAS, CERT
	Court Reporting	CERT
	Court Reporting – Rapid Text Entry	CERT
	Court Reporting – Transcriptionist/Scopist	CERT
	Customer Services Specialist	CERT
	Employment Specialist	CERT
	Human Resources Assistant	CERT
	Human Resources Employment Specialist	CERT
	Human Resources Technician Specialist	CERT
	Human Resources Training Specialist	CERT
	Legal Secretarial Assistant	CERT
	Medical Transcriptions Specialist	CERT
	Real-Time Medical Reporting	CERT
	Records Management	AAS, CERT
	Software Specialist	CERT
	Voice Recognition Systems Technician	CERT
ENGINEERING TECHNOLOGY	Basic DC/AC	CERT
	Basic Electronics	CERT
	Basic Semiconductor	CERT
	Civil Engineering Tech. Specialty	AAS
	Communications Electronics Specialty	AAS
	Computer-Aided Drafting-Engineering Option	AAS
	Computer-Aided Drafting-General Option	AAS
	Computer-Aided Drafting Operations	CERT
	Computer-Aided Drafting-Engineering Option	AAS
	Digital Fundamentals	CERT
	Electronics	AAS, CERT
	Engineering Technology	AAS
	Facility Management	CERT
	Geographic Info Systems	AAS/CERT
	Industrial Electronics	AAS, CERT
	Occupational Safety & Health Management	AAS, CERT
	Occupational Safety & Health Technician I & II	CERT
	Surveying Engineering Option	CERT
	Surveying Technician I & II	CERT
	GRAPHIC ARTS	Interactive Graphics Option
Print Graphics Option		AAS
Sequential Graphics Option		AAS
MENTAL HEALTH TECHNOLOGY	Addiction Studies Option	AAS
	Drug & Alcohol Counselor	AAS, CERT
	Substance Abuse Counseling	CERT

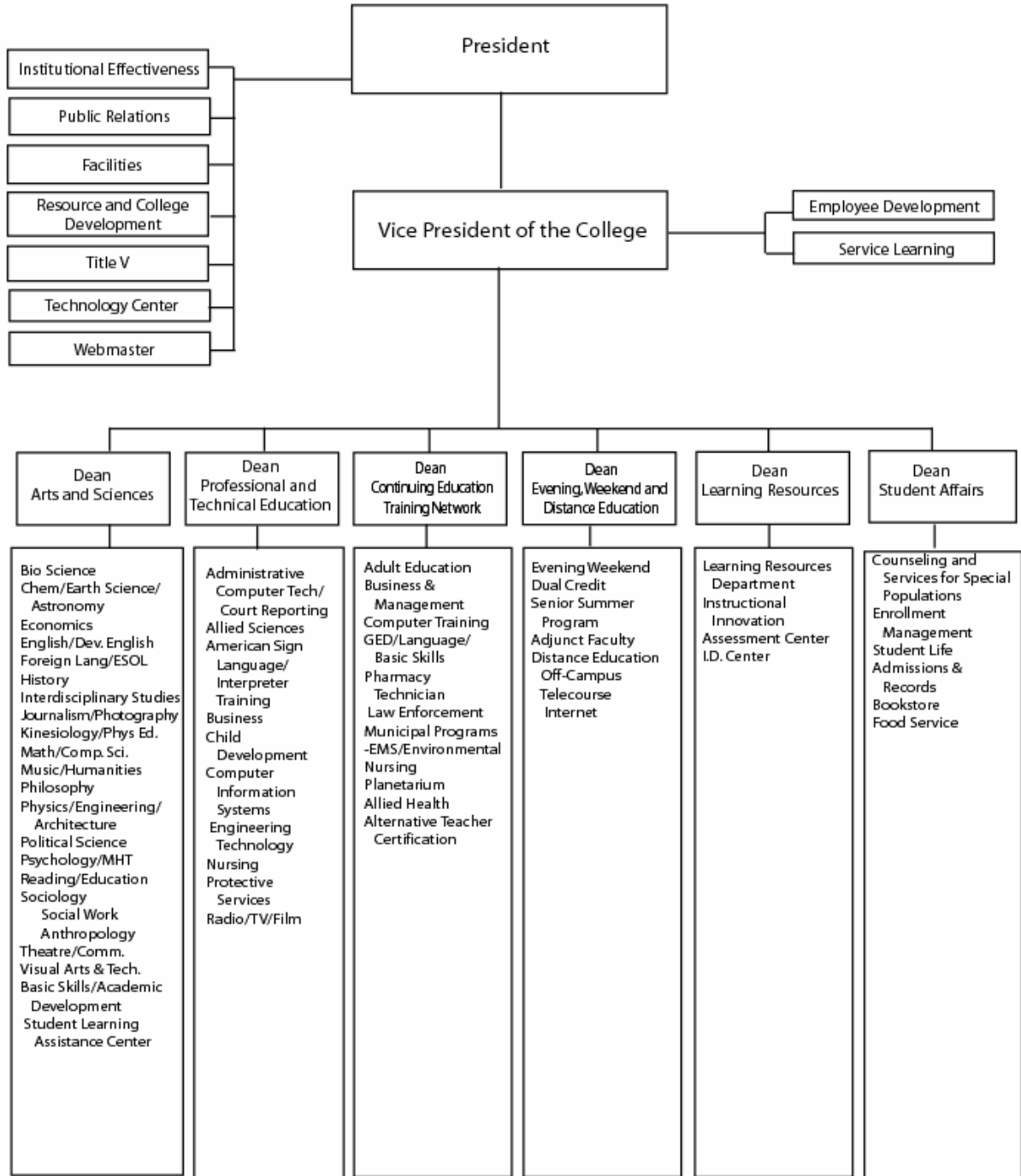
DEPARTMENT	PROGRAM	AWARD
NURSING	Nursing (Career Mobility-LVN to RN)	AAS
	Nursing (Generic Program)	AAS
PROTECTIVE SERVICES	Chemical Dependency Counseling	AAS
	Criminal Justice-Correctional Science	AAS
	Criminal Justice-Law Enforcement	AAS, CERT
	Emergency Management Administration	AAS
	Emergency Medical Services	AAS
	EMT-Basic	CERT
	EMT-Paramedic	CERT
	Fire Fighter (Basic)	CERT
	Fire and Arson Investigation	AAS, CERT
	Fire Inspector	CERT
	Fire Science	AAS
RADIO-TV-FILM	Radio-Television-Film	AAS
SOCIOLOGY	Gerontological Services	AAS

ACCREDITATION & AFFILIATIONS

San Antonio College is approved and accredited by the Southern Association of Colleges and Schools, the Association of Texas Colleges and Universities, the American Dental Association Commission on Dental Accreditation, the American Association of Medical Assistants (AAMA) in conjunction with the Commission on Accreditation of Allied Health Education Programs (CAAHEP), the Texas Educational Theater Association, the Texas Association of Music Schools, the National League for Nursing, the Board of Nurse Examiners for the State of Texas, the American Board of Funeral Service Education and the Community College Journalism Association.

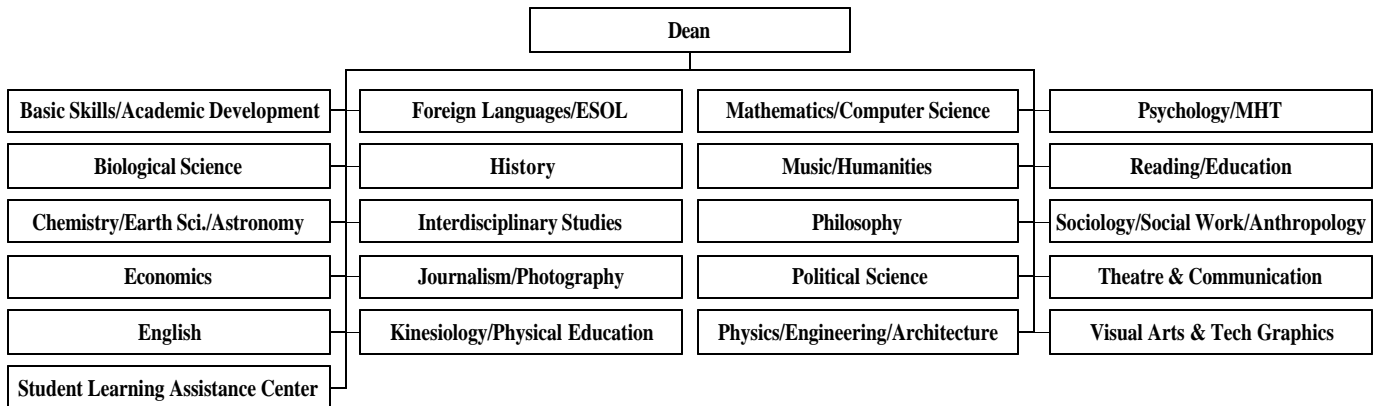
San Antonio College is a member of the American Association of Community Colleges, the Southern Association of Junior Colleges and the Service Member Opportunity College.

SAN ANTONIO COLLEGE Organizational Chart

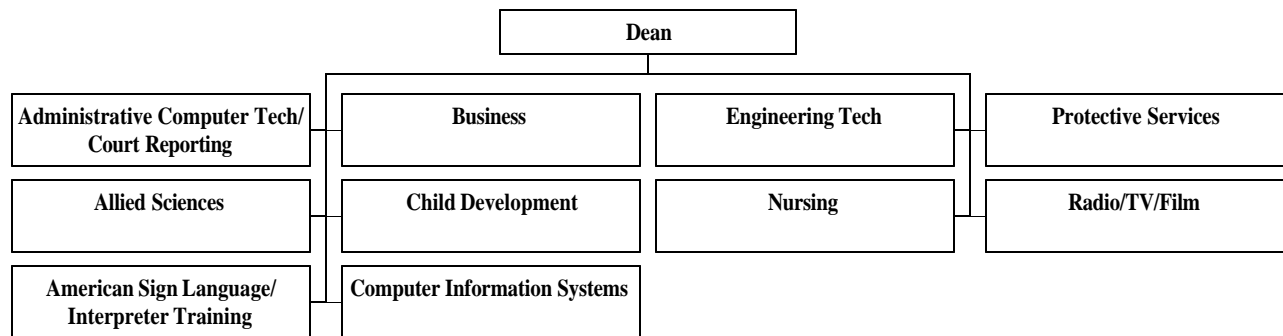


Factbook Update 07/15/03

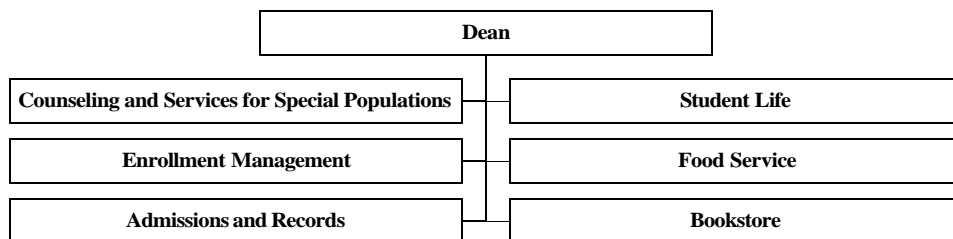
ARTS AND SCIENCES



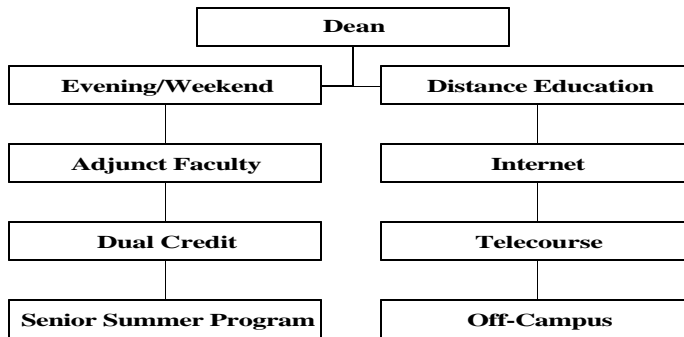
PROFESSIONAL AND TECHNICAL EDUCATION



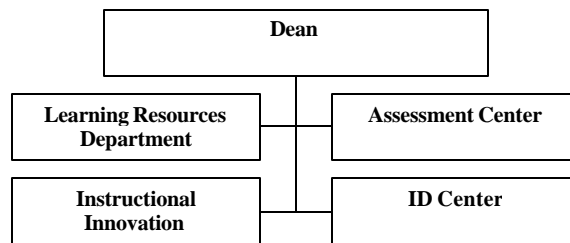
STUDENT AFFAIRS



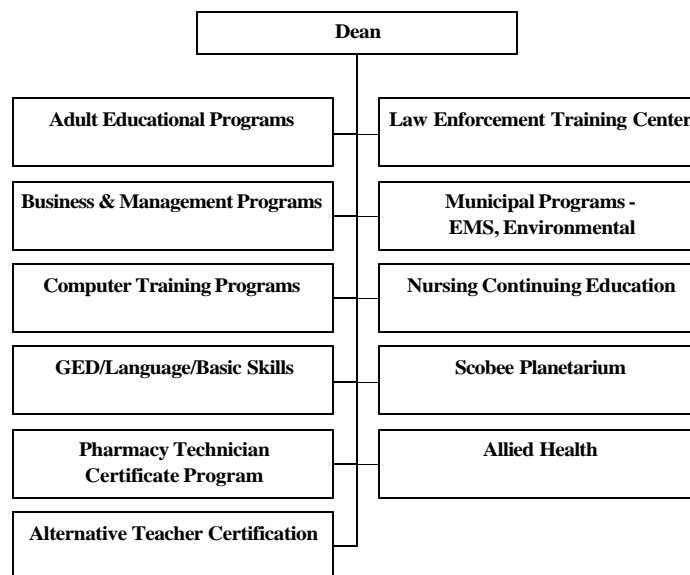
EVENING, WEEKEND, & DISTANCE EDUCATION



LEARNING RESOURCES



CONTINUING EDUCATION TRAINING NETWORK



DIVISIONS

Arts and Sciences

San Antonio College offers a comprehensive Liberal Arts Curriculum designed to satisfy the requirements of the first two years of a baccalaureate degree.

Accounting	Fine Arts	Philosophy
Anthropology	Foreign Languages	Physical Education
Anatomy	Geography	Physics
Architecture	Geographical Info	Political Science
Art	Systems	Psychology
Biological Sciences	Geology	Reading
Business	Health	Social Work
Chemistry	History	Sociology
Communications	Humanities	Speech
Computer Science	Interdisciplinary Studies	Teaching Academy
Earth Sciences	Journalism	Preparation
Economics	Kinesiology	Theatre
Education	Mathematics	Visual Arts & Technical
Engineering	Mental Health	Graphics
English	Nutrition	

Professional and Technical Education

Programs are provided for purposes of job or career entry, career development and change; industry/business startup and development; transfer to four-year degree programs; and technical services to industry. All of the programs are linked with the employing community through active advisory committees, cooperative or part-time work experience, direct placement and career development activities, as well as the sharing of worksite laboratories and equipment.

Accounting Technology	Engineering Technology
Administrative Assistant	Financial Management
American Sign Language	Fire and Arson Investigation
Interpreter Option	Fire Science
Banking and Financial Services	Geographic Information Systems
Business Management	Gerontological Services
Child Development	Graphic Arts
Chemical Dependency Counseling	International Business
Computer Aided Drafting and Design	Labor Studies
Technology	Paralegal Studies
Computer Database Specialist	Medical Assisting
Computer Network Administration	Microcomputer Data Entry
Computer Programming	Mortgage Banking
Computer Security Administration	Mortuary Science
Court Reporting	Nursing
Criminal Justice	Occupational Safety and Health Technology
Dental Assisting	Public Administration
Drug/Alcohol Abuse Counseling	Radio-Television-Broadcasting
Electronics Technology	Records Management
Emergency Management Administration	Teacher Assistant
Emergency Medical Services	

Continuing Education Training Network

Continuing Education Training Network provides nontraditional educational opportunities to meet the needs of students and employers in the San Antonio area. Professional and Technical short courses are offered for business, industry, political science and professional groups; seminars and workshops are developed to complement and supplement in-house training and staff development programs. These non-traditional courses are developed in collaboration with college faculty and community experts. Other-than-credit courses and activities are offered on campus and throughout the community with dates and times arranged for the convenience of the students. Continuing Education assists departments and divisions by serving as an outreach mechanism for channeling interested students into appropriate credit programs within the college.

Certification programs are offered for managers, secretaries, law enforcement officers, private security guards, emergency medical technicians, pharmacy technicians, real estate agents, insurance agents, executive housekeepers, pest control applicators, payroll professionals and health care personnel. Community service programs include conversational languages, personal development and life skills courses, summer courses for children and planetarium programs for the general public. Parallel and integrated programs include classes in General Education Development (GED) and English as a Second Language skill.

Evening, Weekend and Distance Education

Evening course offerings include regular academic courses leading to college degrees and certificate programs, developmental education courses, and other courses planned to be of community service and vocational interest to adults. Courses are offered if there is sufficient demand. Late afternoon, evening, weekend and distance education classes (off-campus courses and telecourse/Internet/interactive courses) are scheduled for the convenience of students. Dual Credit courses are also offered to students from 12 school districts; and, a "Senior Summer Program" is scheduled specifically for graduating seniors for several of the "Educational Partnership" schools.

Distance Education

The Distance Education Center at San Antonio College provides innovative instructional delivery methods affording students access to college through flexible scheduling. Within the framework of the college mission and goals, Distance Education works with all academic departments, the local business community, and the cities of Seguin, New Braunfels and Kerrville to develop educational responses to newly identified needs. The Distance Education Center also works with all Texas community colleges and serves as a provider of instruction through the Virtual College of Texas.

Traditional courses, as well as video courses (courses broadcast by television or available in video format) and Internet courses, are available to students in and out of Bexar County. These innovative instructional delivery methods are used to respond to the non-traditional educational needs within our community. Distance Education offers courses at area high schools, military bases, Citicorp, and the cities of Seguin, New Braunfels and Kerrville. Internet courses and online degrees are available to local students, out-of-state and out-of-county students.

Distance learners can access the following online student services: online registration, online counseling, online tutoring, online library services, and an online self-evaluation to determine if Internet instruction is appropriate for them, 24/7 technical support, and other student support services.

The Internet Skills Center, funded by the Department of Education is also available to all SAC students to facilitate Internet learning. All San Antonio College students (in San Antonio and out-of-state) can access three instructional modules, at no cost to obtain skills in: 1) basic computer skills; 2) web-based research skills; and 3) Internet course readiness skills to successfully complete Internet courses. The Internet Skills Center at San Antonio College is the only center of its kind in San Antonio.

Learning Resources

The Library, located in the Moody Learning Center, is a vital, technologically advanced center of learning and exploration for students, staff, faculty and the community. Supplementing the book, microfilm and government document collection of approximately 200,000 titles are 3,500 current periodical subscriptions and more than 7,000 videotapes, computer files, and sound recordings.

Informational resources owned by the Library, as well as by the other ACCD college libraries, are listed in the online catalog. The catalog is accessible from the Library's homepage [<http://www.accd.edu/sac/lrc/>], as are additional resources; these include the World Wide Web and numerous databases and indexes, many of which provide the full text to magazine, journal and newspaper articles. The Library provides the use of more than fifty public computer stations where users may access these resources. SAC students, staff, and faculty may also access all web-based databases and indexes off campus through the Library's proxy server.

Also available through the Library's homepage are electronic forms that allow users to request Interlibrary Loan Materials and seek reference assistance through the "Ask a Librarian" service. Remote access to the catalog, web-based databases and indexes, Interlibrary Loan, and on-line reference assistance enhances learning opportunities for all Library users, and is vital for Distance Education students.

The Library is equipped with two state-of-the-art electronic classrooms where librarians teach students search strategies and techniques for finding relevant information using print materials, the online catalog and databases, and the World Wide Web. The Audiovisual Center supports classroom instruction and campus activities through its equipment circulation, graphic and photographic services, and AV repair. The Student Multimedia Lab provides students with a facility for class-related design and production needs. The Educational Multimedia Center provides a contemporary studio, classroom video recordings, teleconferencing services, an editing station, and the means to broadcast telecourses directly to students' homes.

Through individual and group instruction, Librarians strive to reduce "library anxiety," increase student opportunities for academic success, and ensure that each student becomes an independent and life-long library learner.

LEARNING RESOURCE CENTER SERVICES 1997-1998 TO 2001-2002

CATEGORY/SERVICE	97-98	98-99	99-00	00-01	01-02
Collections – All items	250,004	254,160	200,985	176,419	139,665
Materials Processed (#)	6,118	6,279	13,904	12,781	25,621
LIBRARY ATTENDANCE					
User Headcount for 2 nd , 3 rd & 4 th Floors Only	333,017	1,122,051	157,093	345,366	361,437
LIBRARY INSTRUCTION					
Group Instruction Sessions	580	575	604	557	668
Students Taught in GIS Sessions	11,371	11,906	13,178	11,415	14,248
Reference Questions	35,201	38,310	31,840	---	21,993
Directional Questions	19,950	22,112	14,816	---	14,000
BOOK COLLECTION					
Book Circulation	82,909	157,202	1,595,326	19,897	40,020
In-Library Use of Books	111,952	366,820	484,042	57,759	43,425
Interlibrary Loans	7,098	6,396	4,654	1,186	4022
PERIODICALS COLLECTION					
Periodical Circulation	39,355	34,747	35,568	89,246	163,978
AUDIOVISUAL COLLECTION					
AV Equipment Circulation	8,507	7,304	7,444	7,431	11,733
In-Library/ACCD Use of AV materials & Equipment	23,326	14,574	20,265	1,483	5,414
INSTRUCTIONAL TELEVISION					
Studio, Campus & Remote Shoots (# Hours)	830	497	380	296	267
Telecourse Playback (# Hours)	1,461	2,049	2,446	1,973	2,388
Editing/Dubbing Sessions (# Hours)	3,342	663	2,362	523	2,136
Teleconference Program (# Hours)	59	106	75	70	67

SOURCE: Learning Resource Center

INSTITUTIONAL RESOURCES

Instructional Technologies

The **Department of Instructional Technologies** was established to coordinate instructional technology initiatives at San Antonio College. The Department coordinates San Antonio College instructional technology activities with other organizations in the Alamo Community College District, Virtual College of Texas, and other institutions of higher education to provide an official location to centralize information related to campus instructional technologies, faculty and staff training for all academic and administrative units, Internet course development, and videoconferencing. The Department of Instructional Technologies serves the college in the following areas:

Instructional Technology & Innovation Center

The **Instructional Technology & Innovation Center**, established in 1995 as the Instructional Innovation Center under a Title III Grant, continues to provide training and assistance for faculty and staff using state-of-the-art equipment and software.

Technology Training Program

The **Technology Training Program** is provided free of charge for the faculty, staff, and administration of San Antonio College and the Alamo Community College District. Training is offered through monthly scheduled classes published on the departmental Web site at <http://www.accd.edu/sac/iic/training/> where a complete list of offerings is available. Individuals outside the Alamo Community College District may attend training by paying a \$20 fee for each class. To register for classes, please call 210-733-2188.

Internet Course Certification Program

The Internet Course Certification Program was developed to ensure skill attainment of faculty developing Internet courses, a consistent high quality of course materials, and ADA compliance. Faculty or staff completing all requirements may be awarded a certificate verifying their ability to develop, teach, or administer Internet-based courses. There are three levels of Internet Course Certificates:

Level I – Internet Course Administrator’s Certificate:

This twelve hour training program is designed to assist chairpersons and administrators in the evaluation of future Internet course development and the selection of Internet course instructors. May supervise but may not teach or develop Internet courses.

Level II – Internet Course Instructor Certification:

Individuals completing this training may teach existing Internet courses but may not develop Internet courses. Requirements include attending an eighteen hour course of study and modifying an existing Internet course to include personal information. This modified Internet course is reviewed to assure that it conforms to the guidelines for Internet courses found at <http://www.accd.edu/SAC/english/mgarcia/inet/criteria.htm>

Level III – Internet Course Developer’s Certification:

Individuals completing all requirements may develop new Internet courses or teach existing Internet courses. Requirements include attending a twenty-four hour course of study and developing Web pages that represent all components of an Internet course. Certification will be awarded on completion of the training and final review of the Internet course materials. Criteria for Internet course development may be found at:

<http://www.accd.edu/SAC/english/mgarcia/inet/criteria.htm>

The Internet Course Developer’s Certification entitles the recipient to 2.4 CEUs (Continuing Education Units) awarded by the San Antonio College Continuing Education Department.

Web Developer's Certification Program

These certifications were designed to provide training for individuals who must design Web pages for themselves or their department but do not plan to teach on the Internet. There are currently two levels of certification for Web Developers at which are described at <http://www.accd.edu/SAC/iic/Web-Cert/>.

Level I – Web Developer's Certification:

Training for this certification is comprised of fourteen hours of basic Web development and site management. Individuals must develop a Web site, which incorporates all elements of the training. Certification will be awarded on completion of the training and final review of the Web site.

Level II – Web Developer's Certification:

A prerequisite for this certification is the completion of Level I Web Developer Certification plus eighteen hours of more advanced Web development training and the individual must incorporate all elements of the additional training into their Web site for certification. Certification will be awarded upon final review of the Web site.

Videoconferencing Center

The **Videoconferencing Center** provides equipment and facilities for the transmission of courses or meetings to distant locations. Videoconferencing, often referred to as two-way interactive television, enables two or more groups, separated by great distances, to see and speak with one another as if in the same room. Technical support for the videoconferencing equipment is provided by the Technology Center.

Videoconferencing Training and Scheduling

Training is provided to faculty or staff on skills needed to teach by way of two-way, interactive, videoconferencing. When using this medium, students and the instructor at the local site are able to see, hear, and speak with students at the distant sites. The instructor or speaker is able to transmit presentations, images of hard copy documents, and motion video to the students at both locations. The Videoconferencing Center may be scheduled by instructors from any Alamo Community College District department free of charge or may be scheduled, as time allows, by individuals outside the College District by paying a usage and technical support fee. Scheduling of the Videoconferencing Center rooms is coordinated through Instructional Technologies at 210-733-2189.

Technology Center

The **Technology Center** provides planning, coordination, installation, and maintenance of campus technology and it provides technical support to all academic and administrative units. The Technology Center provides recommendations for purchasing, equipment setup, installation of hardware and software, implementation of off-campus connectivity, and assists other departments with planning. The Technology Center also supervises the training of new and current technical personnel on the San Antonio College Campus.

Help Desk

The San Antonio College **Help Desk** functions in connection with the Technology Center in order to provide immediate telephone assistance and trouble shooting for faculty, staff, and students. The Help Desk also develops and provides tutorials to assist the Internet Students.

Data Management Team

The **Data Management Team**, functioning as part of the Technology Center at San Antonio College, provides custom in-house application development. The Data Management Team recommends and produces new solutions

as requested by departments, modification and support of existing applications, and incorporates information from legacy systems into meaningful and useful information for department use.

Student Learning Assistance Center

The Student Learning Assistance Center (SLAC) supplements classroom instruction by offering learning strategies that enhance the success potential of traditional students in the college environment. The goal of the SLAC is to enable the Alamo Community College District college students to be independent and resourceful learners by providing learning strategies appropriate to non-traditional students and students with diverse learning styles. SLAC develops independent learners by teaching students how to learn rather than merely giving them quick answers. The learning strategies offered through the SLAC include: Tutoring Services, Computer Services, and Study Skill Services.

Transfer Center

In the Transfer Center, students may obtain degree plans, transfer guides for specific majors, and information about local Joint Admissions Agreements. Educational directories, university catalogs and World Wide Web resources are available for student use. Admissions applications and scholarship information are also available. Additionally, the center arranges student appointments for various university admissions representatives. The biannual Transfer Fair provides an opportunity for SAC students to meet with representatives of universities.

2+2 Degree Plans, Articulation Agreements and Joint Admission Agreements: Transferring to Four-Year Institutions

San Antonio College operates in full compliance with the guidelines and policies set forth by the Texas Higher Education Coordinating Board. The Texas legislature has mandated that all Texas post-secondary institutions develop a core curriculum in accordance with the guidelines established and approved by the Coordinating Board and that all Texas public four-year institutions must accept the entire core curriculums of any public post-secondary institution as meeting the core curriculum of their institution. San Antonio College's core curriculum will meet the core curriculum of any Texas public university.

However, it benefits the four-year degree-seeking student to consult the Transfer Center concerning 2+2 degree plans or transfer guides, Joint Admission Agreements and Articulation agreements. Each institution can be unique in discipline requirements and specific in admission requirements. Without a determined degree plan that is compatible with the transfer institution a student may waste time, money and semester hours on courses not applicable to their major field of study. Counselors will clarify policy requirements, academic expectations and institutional characteristics.

2+2 Degree Plans are contractual educational terms that will be honored by a particular transfer institution contingent on academic standards, admission requirements and student performance.

Articulation Agreements are defined and signed agreements between San Antonio College and various institutions concerning the transfer of students. Each agreement is tailored to the academic criteria of the transfer institution.

Joint Admission Agreements are another form of articulation in which students sign an agreement at a designated university, which allows them to actively be a part of the university's community while attending San Antonio College. Upon completing the prescribed degree plan and meeting the articulated requirements, they transfer. Courses are determined by the transfer institution.

CONTENTS – STUDENT PROFILE

STUDENT PROFILE.....

GENERAL INFORMATION

Gender, Ethnicity, Age, Major, Hours Enrolled, Day vs. Evening.....21

Top Ten:

Academic Majors22

Vocational Majors22

Feeder High Schools22

Zip Codes of Residence23

Counties of Residence23

States of Residence23

Student Objective in Attending San Antonio College24

Intended Duration of Enrollment 24

Previous College Experience 24

Student Employment Status..... 24

Financial Aid and Scholarship Awards.....25

ACADEMIC ACHIEVEMENT

Grade Distribution, Fall 200226

Grade Distribution Trends, Fall Semesters 1998-200226

Fall to Fall Retention by Ethnicity, 1996-1997 to 2001-200227

Retention of First-Time, Full-Time Freshmen by Ethnicity, Fall 200127

Summary Degree Data28

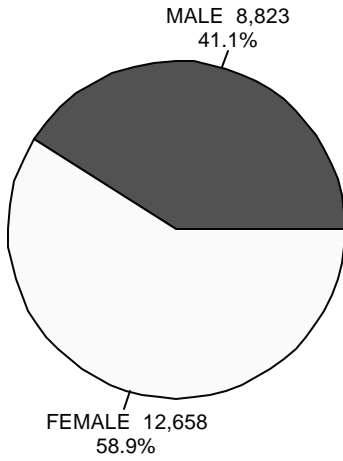
Awards, 1997-1998 to 2001-200228

Ethnicity, 1997-1998 to 2001-2002.....28

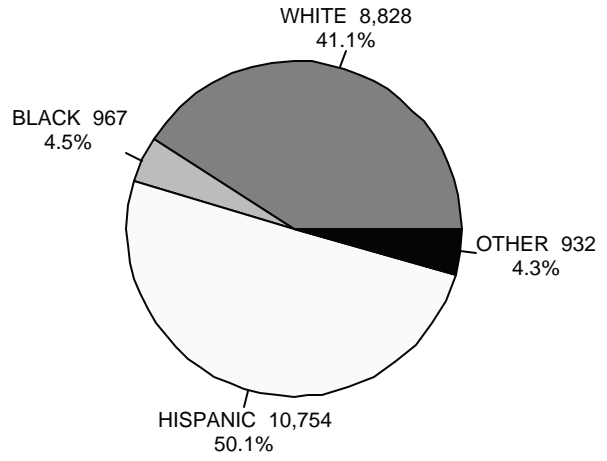
Student Retention by Declared Major, 2001 -2002..... 29

**FALL 2002
21,481 STUDENTS**

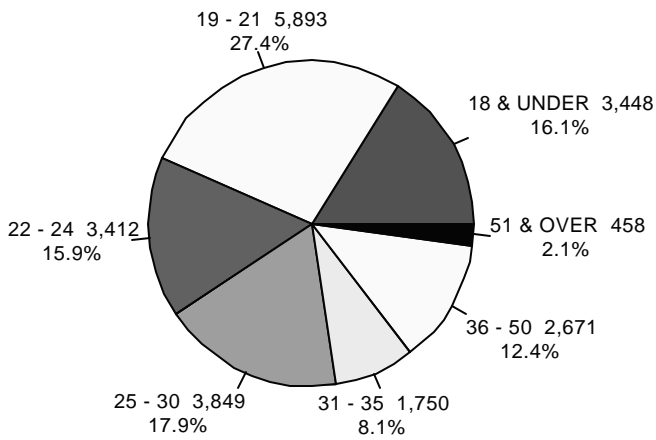
GENDER



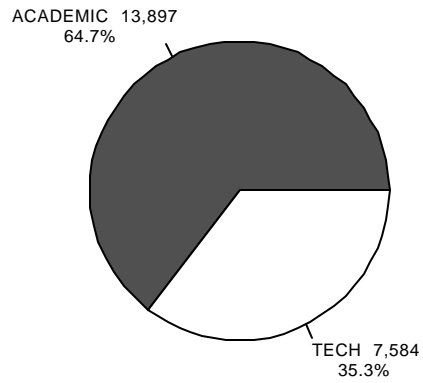
ETHNICITY



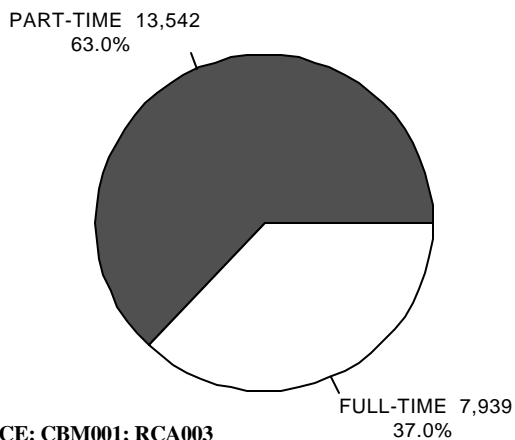
AGE



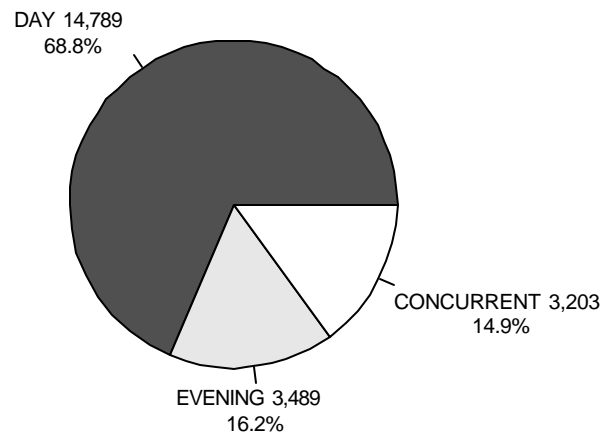
MAJOR



HOURS ENROLLED



DAY VS. EVENING



SOURCE: CBM001; RCA003

**FALL 2002 - TOP TEN
ACADEMIC MAJORS**

MAJORS	NUMBER
1. Liberal Arts	5,607
2. Business Administration – Accounting	1,233
3. Education	1,023
4. Psychology	595
5. Biological Sciences	508
6. Nursing (4-Year Degree)	414
7. Computer Science	395
8. Architecture	307
9. Medicine	299
10. Criminal Justice	295

SOURCE: RC A003, 10/09/02

VOCATIONAL MAJORS

MAJORS	NUMBER
1. Technical Studies	1,725
2. Pre -Nursing	982
3. Nursing (RN)	517
4. Computer Programming	324
5. Computer Network Administration	319
6. Child Development	303
7. Business Management	226
8. Criminal Justice-Law Enforcement Option	190
9. Radio-TV-Film Technology	160
10. Mortuary Science	137

SOURCE: RCA003, 10/09/02

FEEDER HIGH SCHOOLS (FTIC'S)

HIGH SCHOOLS	NUMBER
1. Ronald Reagan High School – North East I.S.D.	315
2. Douglas MacArthur – North East I.S.D.	186
3. James Madison – North East I.S.D.	179
3. Winston Churchill – North East I.S.D.	179
5. Alamo Heights – Alamo Heights I.S.D.	166
6. Robert E. Lee – North East I.S.D.	140
7. Judson High School – Judson I.S.D.	139
8. Theodore Roosevelt High School – North East I.S.D.	98
9. Oliver W. Holmes – Northside I.S.D.	83
10. Sidney Lanier High School – San Antonio I.S.D.	78

SOURCE: RFA978, 01/08/03

**FALL 2002 - TOP TEN
ZIP CODES OF RESIDENCE**

ZIPCODES	NUMBER
1. 78213	927
2. 78228	923
3. 78240	912
4. 78247	900
5. 78216	889
6. 78201	868
7. 78230	737
8. 78232	712
9. 78212	698
10. 78233	688

SOURCE: RFA942, 01/08/03

COUNTIES OF RESIDENCE

COUNTIES	NUMBER
1. Bexar	19,627
2. Comal	691
3. Guadalupe	567
4. Kerr	198
5. Wilson	131
6. Bandera	101
7. Kendall	97
8. Medina	91
9. Atascosa	64
10. Karnes	41

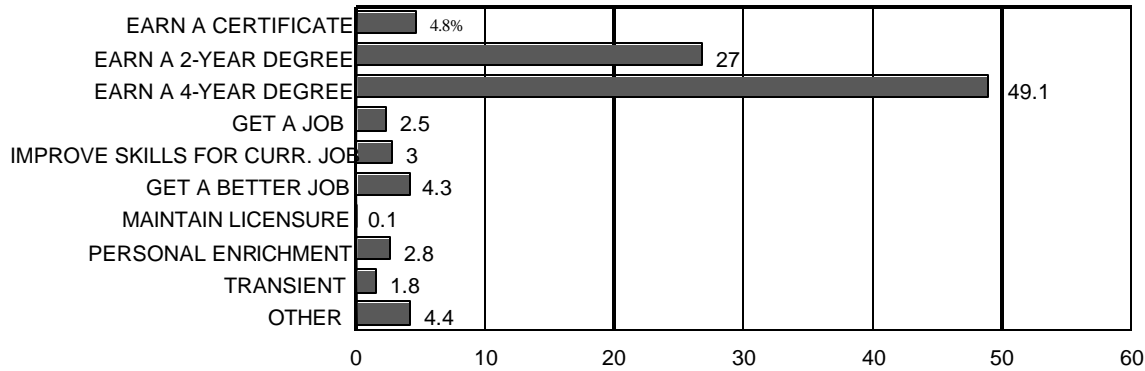
SOURCE: RCA003, 10/09/02

STATES OF RESIDENCE

STATES	NUMBER
1. Texas	20,888
2. Foreign	272
3. California	95
4. Missouri	84
5. Florida	57
6. New York	31
7. Illinois	25
8. Ohio	21
9. Louisiana	19
10. Oklahoma	18

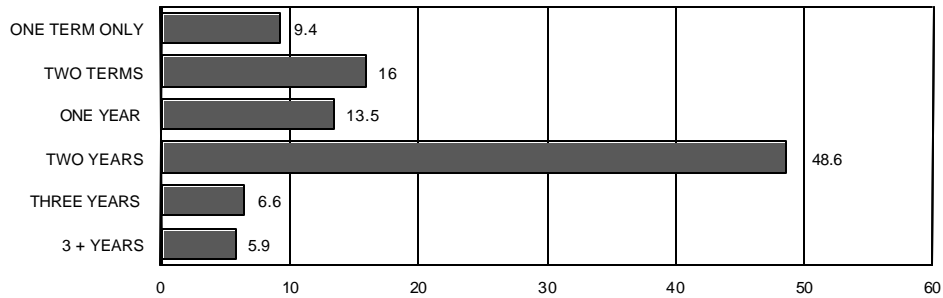
SOURCE: RCA003, 10/09/03

FALL 2002
STUDENT OBJECTIVE IN ATTENDING SAN ANTONIO COLLEGE



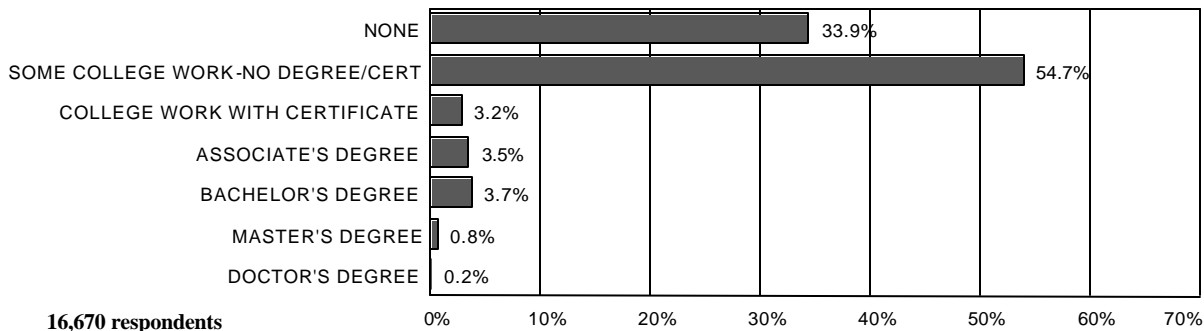
17,450 respondents

INTENDED DURATION OF ENROLLMENT



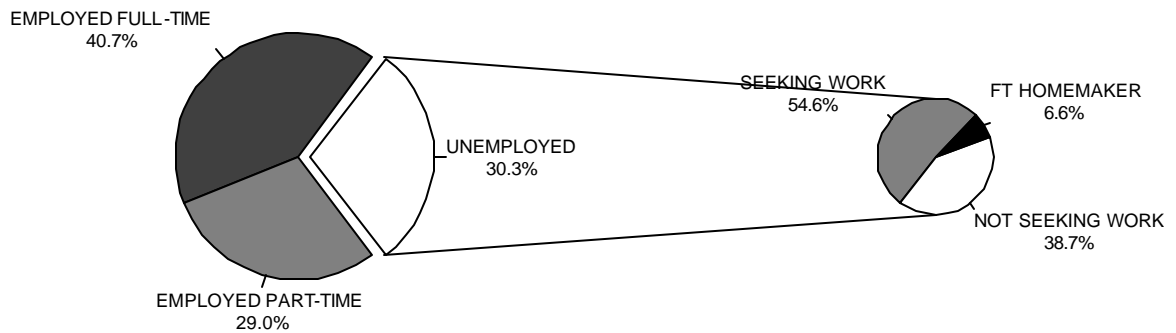
16,543 respondents

PREVIOUS COLLEGE EXPERIENCE



16,670 respondents

STUDENT EMPLOYMENT STATUS



SOURCE: STUDENT TRACKING SURVEY (AFA020, 01/10/03); 22,385 potential respondents

FINANCIAL AID AWARDS 2002-2003

CATEGORY	AMOUNT	# AWARDS
Pell Grant	\$17,242,050	8,005
Stafford Loan	9,992,225	4,252
Federal Work Study (State-CWS)	737,215	551
Supplemental Education Opportunity Grant (SEOG)	823,725	1,334
Scholarships	941,871	1,525
State Incentive Grant (SSIG)	52,085	70
Other State and Federal Grants	1,298,757	1,346
Texas Public Education Grant (TPEG)	932,675	1,395
TOTAL	32,020,603	18,478

SOURCE: Student Financial Aid Office

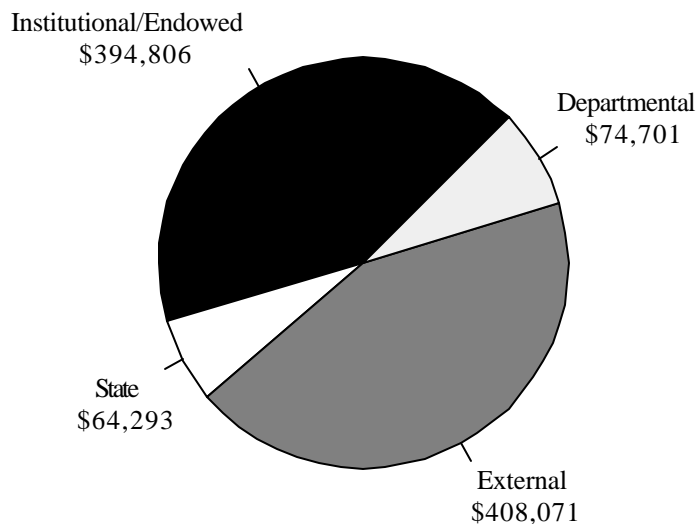
SCHOLARSHIPS AWARDED 2002-2003

Institutional/Endowed	\$ 394,806
Departmental	74,701
State	64,293
External	408,071

Total Awarded \$ 941,871

Total number of scholarships awarded:
1,525

Scholarships are available from a variety of sources both private and public. Listed below are types of scholarships available through San Antonio College.



Endowed scholarships - awarded by ACCD. Contributions made to ACCD scholarship foundation by private donors. Applications available at Student Financial Services.

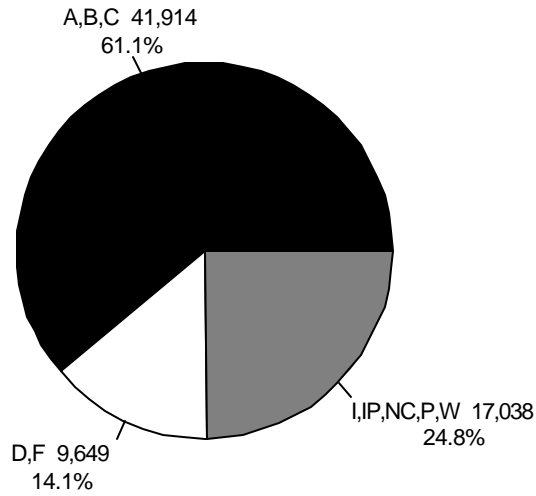
Institutional scholarships - awarded by Student Financial Services. Applications available at Student Financial Services Office.

Departmental scholarships - awarded by departments. Private gifts donated to departments from various organizations. Awards usually based on major, GPA, community work. For additional information/applications, contact departments.

State scholarships - Early High School Graduates, Good Neighbor, and Professional Nursing available through the Texas Higher Education Coordinating Board. Awarded by Student Financial Services.

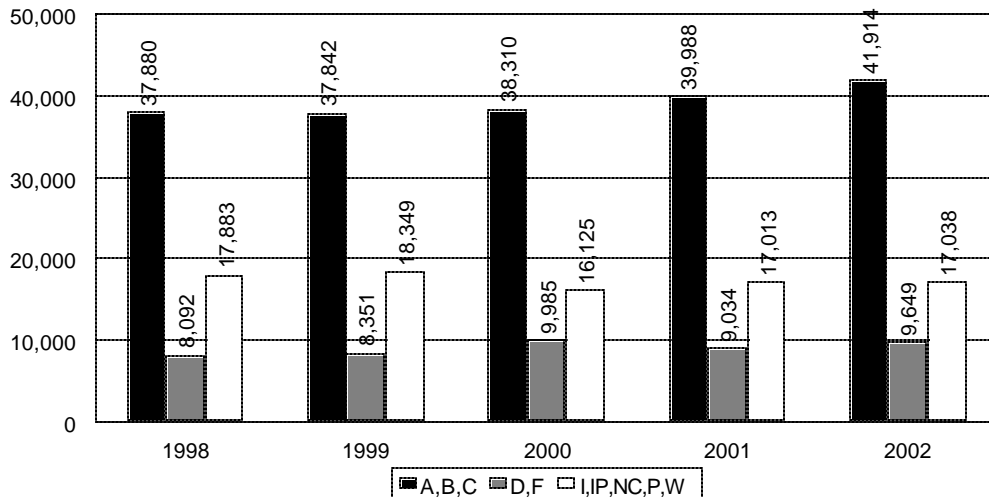
External scholarships - awarded by a variety of off-campus businesses/organizations for students attending San Antonio College.

GRADE DISTRIBUTION – FALL 2002



GRADE DISTRIBUTION TRENDS – FALL 1998-2002

	A	B	C	Productive Rate	D	F	Completion Rate	I	IP	NC	P	W	Total
1998	12,926 20.2%	14,515 22.7%	10,439 16.3%	37,880 59.3%	3,323 5.2%	4,769 7.5%	45,972 72.0%	820 1.3%	204 0.3%	203 0.3%	0 0.0%	16,656 26.1%	63,855 100.0%
1999	13,608 21.1%	14,263 22.1%	9,971 15.5%	37,842 58.6%	3,337 5.2%	5,014 7.8%	46,193 71.6%	913 1.4%	292 0.5%	206 0.3%	0 0.0%	16,938 26.2%	64,542 100.0%
2000	14,155 22.0%	13,964 21.7%	10,191 15.8%	38,310 59.5%	3,329 5.2%	6,656 10.3%	48,295 75.0%	0 0.0%	249 0.4%	3 0.0%	20 0.0%	15,853 24.6%	64,420 100.0%
2001	14,483 21.9%	14,842 22.5%	10,663 16.1%	39,988 60.5%	3,339 5.1%	5,695 8.6%	49,022 74.2%	1,127 1.7%	272 0.4%	16 0.0%	10 0.0%	15,588 23.6%	66,035 100.0%
2002	15,224 22.2%	15,653 22.8%	11,037 16.1%	41,914 61.1%	3,587 5.2%	6,062 8.8%	51,563 75.2%	1,076 1.6%	259 0.4%	4 0.0%	9 0.0%	15,690 22.9%	68,601 100%



SOURCE: RFA696, 01/08/03

FALL TO FALL RETENTION BY ETHNICITY 1996-1997 TO 2001-2002

	96-97 %	97-98 %	98-99 %	99-00 %	00-01 %
% of SAC students who reenrolled at San Antonio College the next Fall (Non-graduates)					
Anglo	40.0	39.1	40.4	39.5	40.2
Black	35.5	36.8	42.3	39.1	42.6
Hispanic	45.2	43.1	44.9	44.3	45.5
Asian	51.8	43.8	47.5	49.0	43.2
Native American/Alaskan	36.5	38.6	44.3	40.6	31.5
Non-Resident Alien	46.8	50.1	50.6	52.4	43.2
Total	42.7	41.3	43.1	42.4	43.1
Texas	38.8	38.8	41.7	41.2	41.9
% of SAC students not found in any state college the next Fall (Non-graduates)					
Anglo	46.1	45.0	44.7	44.6	42.5
Black	53.7	51.9	47.3	49.7	46.6
Hispanic	45.1	46.5	44.7	45.4	43.7
Asian	35.3	38.6	38.0	36.1	41.3
Native American/Alaskan	52.9	44.6	38.6	46.4	54.8
Non-Resident Alien	48.3	37.4	34.5	38.0	45.8
Total	45.7	45.8	44.5	44.9	43.3
Texas	47.3	46.9	43.9	44.2	42.8

SOURCE: Texas Higher Education Coordinating Board Student Migration Report; transfer to private or out-of-state institutions not considered

**RETENTION OF FIRST-TIME FULL-TIME* FRESHMEN BY ETHNICITY
FALL 2001**

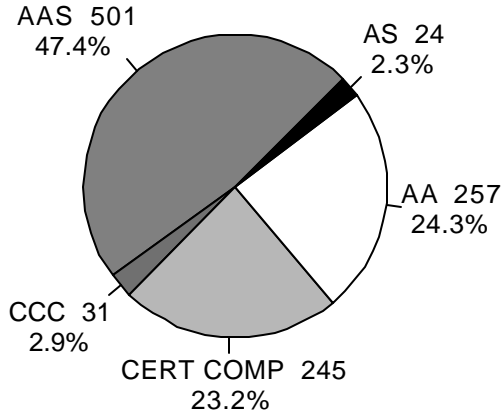
	WHITE	BLACK	HISPANIC	ASIAN	NATIVE AM/ ALASKAN	INTERNATIONAL	TOTAL
San Antonio College							
Enrolled Fall 2000	546	67	927	49	2	43	1,634
Retained After One Year	315	38	517	30	0	19	919
Percent Retained	57.7%	56.7%	55.8%	61.2%	.0%	44.2%	56.2%
Total – Texas							
Enrolled Fall 2000	26,458	5,466	13,460	1,353	180	1,351	48,666
Retained After One Year	13,593	2,539	7,718	856	83	703	25,708
Percent Retained	51.4%	46.5%	57.3%	63.3%	46.1%	52.0%	52.8%

SOURCE: Texas Higher Education Coordinating Board – 2002 Statistical Report

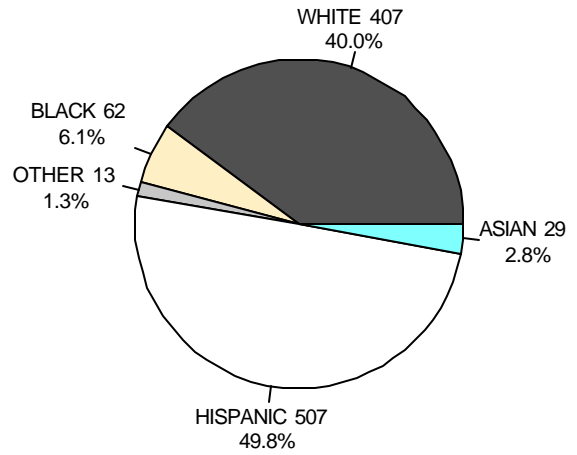
* A student who is enrolled in 12 or more semester credit hours at a community college or 8 or more semester credit hours at a technical college.

SUMMARY DEGREE DATA

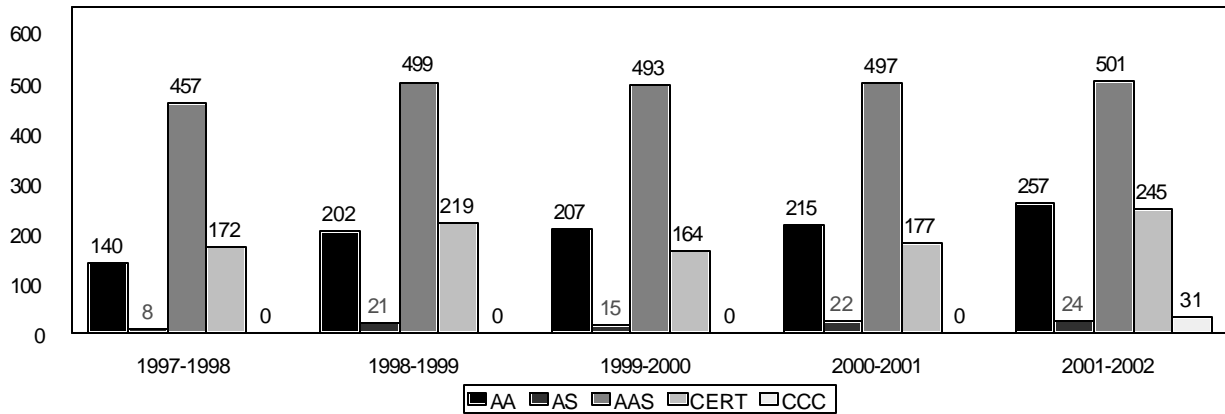
2001-2002 AWARDS



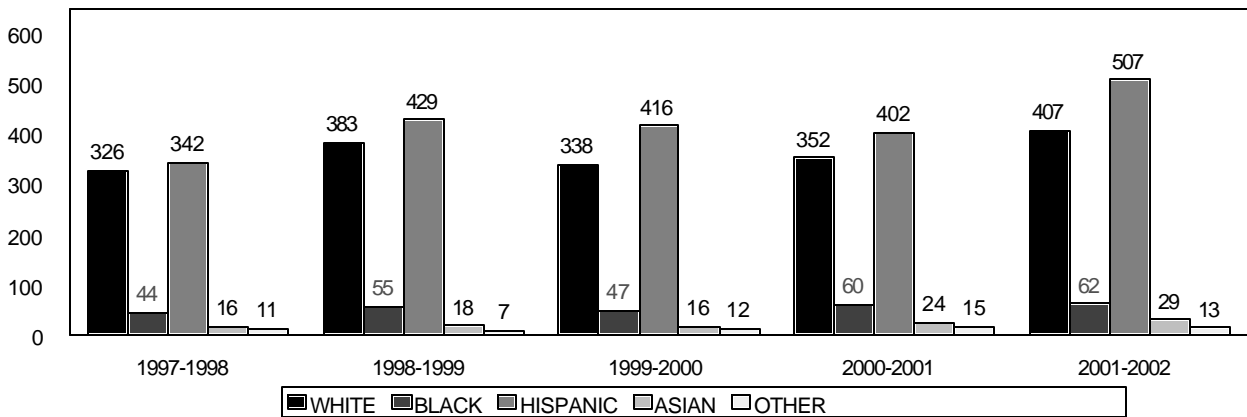
2001-2002 ETHNICITY



AWARDS 1997-1998 TO 2001-2002



ETHNICITY 1997-1998 TO 2001-2002



SOURCE: CBM009, 12/03/02

STUDENT RETENTION BY DECLARED MAJOR 2001-2002

The following pages detail quantitative measures of fall populations followed for one year. Original fall enrollment, actual fall completion, their ratio; fall to spring enrollment, their ratio; actual fall to spring completion, their ratio; fall through end of spring retention, their ratio; number of graduates and number of certificates beginning with fall year.

Source: AFA 999, 7/31/02

STUDENT RETENTION BY DECLARED MAJOR 2001-2002

Source: AFA 999, 7/31/02

Major Code	Major Title	Initial Fall Enrollment	Initial Fall Completion	Within Semester Completion Initial Fall	Percentage of Fall Completers Enrolled in Spring	Spring Enrollment	Spring Completion	Within Semester Completion Spring	Initial Fall Who Completed Spring Semester	Grad	Cert
1512	ACCOUNTING TECHNICIAN	33	32	96%	78%	25	25	100%	75%	0	0
1500	ACCOUNTING TECHNOLOGY	116	103	88%	72%	75	68	90%	58%	2	4
1548	ADDICTION STUDIES	2	1	50%	100%	1	1	100%	50%	0	0
1535	ADMINISTRATIVE ASSISTANT	22	20	90%	104%	21	20	95%	90%	0	0
1670	ADMINISTRATIVE SYSTEMS TECHNICIAN	17	15	88%	79%	12	11	91%	64%	0	0
1701	ADV. MASTERY CHILD CARE ADMIN. OPT	2	2	100%	100%	2	2	100%	100%	0	0
1685	ADVANCED ELECTRONICS TECHNOLOGY	2	2	100%	50%	1	1	100%	50%	0	0
1590	ADVERTISING ART	13	12	92%	41%	5	5	100%	38%	2	0
1040	AGRICULTURE	4	3	75%	66%	2	1	50%	25%	0	0
1056	AMERICAN SIGN LANGUAGE	16	16	100%	93%	15	14	93%	87%	0	0
1122	AMERICAN STUDIES	1	1	100%	100%	1	1	100%	100%	0	0
1045	ANTHROPOLOGY	32	30	93%	73%	22	22	100%	68%	1	0
1001	ARCHITECTURE	298	265	88%	84%	223	204	91%	68%	0	1
1002	ART	289	257	88%	68%	176	161	91%	55%	9	1
1822	AUTOCAD	3	3	100%	66%	2	2	100%	66%	0	0
1503	BANKING	37	31	83%	67%	21	17	80%	45%	1	1
1549	BANKING & FINANCIAL SERVICES	6	5	83%	119%	6	3	50%	50%	0	1
1611	BASIC FIREFIGHTER	68	65	95%	66%	43	39	90%	57%	0	0
1003	BIOLOGICAL SCIENCES	553	495	89%	67%	335	300	89%	54%	6	1
1004	BUSINESS ADMIN-ACCOUNTING	1305	1170	89%	67%	795	715	89%	54%	25	5
1106	BUSINESS ADMIN-BUILDING DEVELOPMT	1	1	100%	100%	1	1	100%	100%	0	0
1101	BUSINESS ADMIN-FINANCE	36	32	88%	84%	27	23	85%	63%	1	0
1100	BUSINESS ADMIN-INFORMATION SYS	71	62	87%	87%	54	49	90%	69%	1	0
1102	BUSINESS ADMIN-INTERNATIONAL BUS	29	27	93%	66%	18	17	94%	58%	2	0
1103	BUSINESS ADMIN-LEADERSHIP & ADMIN	11	10	90%	69%	7	7	100%	63%	0	0
1105	BUSINESS ADMIN-MANAGEMENT SCIENCE	26	26	100%	76%	20	18	89%	69%	1	0
1108	BUSINESS ADMIN-MARKETING	34	33	97%	72%	24	20	83%	58%	1	0
1107	BUSINESS ADMIN-PERSONNEL/HUM RES MGT.	24	21	87%	90%	19	18	94%	75%	1	0

STUDENT RETENTION BY DECLARED MAJOR 2001-2002

Source: AFA 999, 7/31/02

Major Code	Major Title	Initial Fall Enrollment	Initial Fall Completion	Within Semester Completion Initial Fall	Percentage of Fall Completers Enrolled in Spring	Spring Enrollment	Spring Completion	Within Semester Completion Spring	Initial Fall Who Completed Spring Semester	Grad	Cert
1104	BUSINESS ADMIN-TOURISM MANAGEMENT	6	5	83%	100%	5	5	100%	83%	0	0
1544	BUSINESS MANAGEMENT	126	110	87%	79%	88	79	89%	62%	4	2
1005	CHEMISTRY	68	58	85%	67%	39	35	89%	51%	1	0
1621	CHILD CARE ADMINISTRATION	46	44	95%	77%	34	31	91%	67%	0	7
1827	CHILD DEV ASSOC	18	11	61%	54%	6	6	100%	33%	0	3
1171	CHILD DEV/CHILD PSY	1	1	100%	0%	0	0	0%	0%	0	0
1588	CHILD DEVELOPMENT	398	374	93%	71%	268	244	91%	61%	17	44
1717	CHILD DEVELOPMENT ASSOCIATE (CDA)	6	5	83%	79%	4	4	100%	66%	0	0
1644	CHILD DEVELOPMENT ASSOCIATE TRAINING	54	45	83%	57%	26	24	92%	44%	0	16
1702	CHILD DEVELOPMENT-SPECIAL NEEDS	5	4	79%	100%	4	4	100%	79%	0	1
1119	CIVIL ENGINEERING	10	10	100%	89%	9	7	77%	69%	0	0
1600	CIVIL ENGINEERING TECH	1	1	100%	0%	0	0	0%	0%	0	0
1186	CLINICAL LAB SCIENCE	1	1	100%	100%	1	1	100%	100%	0	0
1604	COMMERCIAL CONSTRUCTION TECHNOLOGY	1	1	100%	100%	1	1	100%	100%	0	0
1181	COMMUNICATION & LEARNING DISORDER	3	3	100%	66%	2	2	100%	66%	0	0
1024	COMMUNICATIONS	215	187	86%	72%	135	117	86%	54%	6	0
1990	COMMUNICATIONS ELECTRONICS TECH	37	30	81%	59%	18	16	88%	43%	2	0
1112	COMMUNICATIONS-ELECTRONIC MEDIA	2	2	100%	100%	2	2	100%	100%	0	0
1113	COMMUNICATIONS-PUBLIC RELATIONS	10	9	89%	66%	6	5	83%	50%	0	0
1111	COMMUNICATIONS-TECHNICAL COMMUNICATION	2	2	100%	50%	1	1	100%	50%	0	0
1543	COMP AIDED DFTG-DRAFTING-ENGINEERING	9	9	100%	77%	7	7	100%	77%	0	0
1542	COMPUTER AIDED DRAFTING & DESIGN	14	13	92%	76%	10	10	100%	71%	0	0
1681	COMPUTER AIDED DRAFTING OPERATIONS	24	21	87%	66%	14	14	100%	58%	0	1
1502	COMPUTER AIDED TRANSCRIPTION	1	1	100%	100%	1	1	100%	100%	0	1
1566	COMPUTER APPLICATIONS DESIGN	1	1	100%	100%	1	1	100%	100%	0	0
1619	COMPUTER ASSISTANT	7	4	57%	75%	3	2	66%	28%	0	0
1529	COMPUTER DATABASE SPECIALIST	39	37	94%	83%	31	28	90%	71%	4	2

STUDENT RETENTION BY DECLARED MAJOR 2001-2002

Source: AFA 999, 7/31/02

Major Code	Major Title	Initial Fall Enrollment	Initial Fall Completion	Within Semester Completion Initial Fall	Percentage of Fall Completers Enrolled in Spring	Spring Enrollment	Spring Completion	Within Semester Completion Spring	Initial Fall Who Completed Spring Semester	Grad	Cert
1669	COMPUTER DATABASE TECHNICIAN	9	8	88%	37%	3	3	100%	33%	0	1
1991	COMPUTER ELECTRONICS TECH	36	34	94%	70%	24	19	79%	52%	2	1
1183	COMPUTER ENGINEERING	4	3	75%	33%	1	1	100%	25%	0	0
1533	COMPUTER HELP DESK SPECIALIST	54	47	87%	85%	40	39	97%	72%	2	5
1534	COMPUTER HELP DESK TECHNICIAN	33	30	90%	53%	16	13	81%	39%	0	2
1172	COMPUTER INFORMATION SYSTEMS	14	12	85%	75%	9	6	66%	42%	0	0
1567	COMPUTER NETWORK ADMINISTRATION	350	336	95%	75%	252	232	92%	66%	29	3
1568	COMPUTER NETWORK TECHNICIAN	53	45	84%	79%	36	34	94%	64%	0	2
1532	COMPUTER OPERATIONS	16	15	93%	66%	10	8	79%	50%	2	0
1680	COMPUTER PROGRAMMER TRAINING	74	61	82%	70%	43	36	83%	48%	2	4
1531	COMPUTER PROGRAMMING	453	397	87%	70%	281	254	90%	56%	20	8
1719	COMPUTER PROGRAMMING MICRO OPTION	1	1	100%	0%	0	0	0%	0%	0	0
1047	COMPUTER SCIENCE	417	372	89%	69%	260	235	90%	56%	2	0
1540	COMUNICATIONS/RADAR ELECTRONICS	5	4	79%	75%	3	3	100%	59%	0	0
1563	COURT REPORTING	19	18	94%	44%	8	5	62%	26%	0	1
1516	COURT REPORTING - RAPID TEXT ENTRY	12	11	91%	63%	7	7	1	58%	0	0
1505	COURT REPORTING-COMP AIDED TRANS TECH	10	10	100%	89%	9	8	88%	79%	0	1
1054	CRIMINAL JUSTICE	331	296	89%	68%	204	181	88%	54%	5	2
1704	CRIMINAL JUSTICE - LAW ENFORCEMENT	209	188	89%	67%	127	112	88%	53%	2	1
1126	CRIMINAL JUSTICE - 4 YEAR	16	15	93%	73%	11	10	90%	62%	1	0
1703	CRIMINAL JUSTICE CORRECTIONAL SCI OPT.	87	78	89%	71%	56	47	83%	54%	2	0
1668	CRIMINAL JUSTICE-LAW OFFICER I	8	8	100%	25%	2	2	100%	25%	0	0
1527	DEAF SUPPORT SPECIALIST	31	29	93%	68%	20	18	89%	58%	1	0
1673	DENTAL ASSISTING TECHNOLOGY	48	43	89%	74%	32	30	93%	62%	1	0
1006	DENTISTRY	69	64	92%	75%	48	42	87%	60%	0	0
1574	DRAFTING AND DESIGN	39	38	97%	73%	28	26	92%	66%	2	1
1683	DRAFTING ENGINEERING TECHNOLOGY	12	12	100%	66%	8	7	87%	58%	1	1
1041	DRAMA	52	46	88%	76%	35	31	88%	59%	0	0
1620	DRUG/ALCOHOL ABUSE COUNSELING	51	47	92%	78%	37	33	89%	64%	2	8

STUDENT RETENTION BY DECLARED MAJOR 2001-2002

Source: AFA 999, 7/31/02

Major Code	Major Title	Initial Fall Enrollment	Initial Fall Completion	Within Semester Completion Initial Fall	Percentage of Fall Completers Enrolled in Spring	Spring Enrollment	Spring Completion	Within Semester Completion Spring	Initial Fall Who Completed Spring Semester	Grad	Cert
1007	ECONOMICS	26	21	80%	71%	15	15	100%	57%	0	0
1025	EDUCATION	972	872	89%	74%	653	600	91%	61%	9	6
1120	ELECTRICAL ENGINEERING	22	17	77%	76%	13	12	92%	54%	2	0
1684	ELECTRONIC GRAPHICS	1	1	100%	0%	0	0	0%	0%	0	0
1575	ELECTRONICS TECHNOLOGY	30	27	89%	29%	8	8	100%	26%	1	1
1526	EMERGENCY MEDICAL SERVICES	27	26	96%	73%	19	18	94%	66%	0	0
1613	EMT - BASIC	31	28	90%	53%	15	12	79%	38%	0	0
1614	EMT - INTERMEDIATE	2	2	100%	0%	0	0	0%	0%	0	0
1615	EMT - PARAMEDIC	5	4	79%	75%	3	3	100%	59%	0	0
1008	ENGINEERING	238	205	86%	66%	136	118	86%	49%	1	0
1595	ENGINEERING TECHNOLOGY	45	40	88%	54%	22	18	81%	39%	0	0
1009	ENGLISH	168	147	87%	74%	110	97	88%	57%	2	1
1705	ENGR TECH-CIVIL ENGINEERING OPTION	27	25	92%	83%	21	18	85%	66%	0	0
1706	ENGR TECH-MANUFACTURING ENGINEERING OPT	4	4	100%	25%	1	1	100%	25%	0	0
1707	ENGR TECH-MECHANICAL ENGINEERING OPTION	36	35	97%	65%	23	22	95%	61%	0	0
1167	ENTREPRENEURIAL STUDIES	1	1	100%	0%	0	0	0%	0%	0	0
1617	FACILITY ENGINEERING TECH	1	1	100%	0%	0	0	0%	0%	0	0
1130	FASHION DESIGN	9	7	77%	71%	5	5	100%	55%	0	0
1131	FASHION MERCHANDISING	1	1	100%	0%	0	0	0%	0%	0	0
1801	FINANCIAL MANAGEMENT	3	1	33%	0%	0	0	0%	0%	0	0
1523	FINANCIAL SERVICES INDUSTRY	31	27	87%	51%	14	9	64%	29%	0	0
1173	FINE ARTS (ART,DRAM,ENG,MUSI)	3	2	66%	100%	2	2	100%	66%	0	0
1035	FINE ARTS & HUMANITIES	6	5	83%	39%	2	2	100%	33%	0	0
1603	FIRE & ARSON INVESTIGATION	13	13	100%	69%	9	9	100%	69%	0	0
1587	FIRE SCIENCE	75	68	90%	70%	48	45	93%	59%	3	2
1612	FIRE SCIENCE - ARSON INVESTIGATION	3	3	100%	66%	2	1	50%	33%	0	1
1610	FIRE SCIENCE - FIRE INSPECTOR	2	2	100%	50%	1	1	100%	50%	0	0
1010	FOREIGN LANGUAGES	11	10	90%	39%	4	3	75%	27%	1	0
1115	FRENCH	1	1	100%	100%	1	1	100%	100%	0	0
1675	FUNERAL DIRECTING	27	26	96%	53%	14	14	100%	51%	0	13
1135	GENERAL BUSINESS	26	25	96%	75%	19	15	78%	57%	1	0
1162	GENETICS	1	1	100%	100%	1	1	100%	100%	0	0
1055	GEOGRAPHIC INFORMATION SYSTEMS	15	14	93%	64%	9	8	88%	53%	1	0

STUDENT RETENTION BY DECLARED MAJOR 2001-2002

Source: AFA 999, 7/31/02

Major Code	Major Title	Initial Fall Enrollment	Initial Fall Completion	Within Semester Completion Initial Fall	Percentage of Fall Completers Enrolled in Spring	Spring Enrollment	Spring Completion	Within Semester Completion Spring	Initial Fall Who Completed Spring Semester	Grad	Cert
1127	GEOGRAPHY	1	1	100%	0%	0	0	0%	0%	0	0
1011	GEOLOGY	18	15	83%	73%	11	11	100%	61%	0	0
1012	GOVERNMENT	1	1	100%	100%	1	1	100%	100%	0	0
1598	GRAPHIC ARTS-ELECTRONIC GRAPHICS OPT	202	186	92%	76%	142	133	93%	65%	13	0
1536	GRAPHIC ARTS-INTERACTIVE GRAPHICS	30	25	83%	79%	20	14	69%	46%	1	0
1597	GRAPHIC ARTS-PRINT GRAPHICS OPT	115	110	95%	69%	77	70	90%	60%	12	0
1537	GRAPHIC ARTS-SEQUENTIAL GRAPHICS	23	22	95%	95%	21	20	95%	86%	1	0
1124	HEALTH	3	2	66%	100%	2	2	100%	66%	0	0
1188	HEALTH CARE ADMINISTRATION	1	1	100%	100%	1	1	100%	100%	0	0
1013	HISTORY	101	91	90%	68%	62	52	83%	51%	1	0
1134	HOTEL/RESTAURANT MANAGEMENT	1	1	100%	100%	1	0	0%	0%	0	0
1835	HUMAN RESOURCES ASSISTANT	1	1	100%	0%	0	0	0%	0%	0	0
1831	HUMAN RESOURCES MANAGEMENT	7	7	100%	71%	5	5	100%	71%	0	2
1814	HUMAN RESOURCES TECH BASIC	1	1	100%	0%	0	0	0%	0%	0	0
1110	HUMANITIES	2	2	100%	0%	0	0	0%	0%	0	0
1676	INDUSTRIAL ELECTRONICS	2	1	50%	200%	2	1	50%	50%	0	0
1139	INDUSTRIAL ENGINEERING	2	2	100%	100%	2	2	100%	100%	0	0
1845	INTER SPANISH I - BUSINESS	1	1	100%	100%	1	1	100%	100%	0	0
1851	INTER SPANISH II - MEDICAL PERSONNEL	1	1	100%	100%	1	1	100%	100%	0	0
1125	INTERDISCIPLINARY STUDIES	68	66	97%	68%	45	43	95%	63%	2	0
1030	INTERIOR DESIGN	31	30	96%	69%	21	18	85%	58%	0	0
1837	INTERNATIONAL BUSINESS	2	2	100%	50%	1	1	100%	50%	0	0
1187	INTERNATIONAL RELATIONS	2	2	100%	100%	2	2	100%	100%	0	0
1508	INTERPRETING FOR THE DEAF	142	132	92%	82%	109	106	97%	74%	7	0
1014	JOURNALISM	89	81	91%	61%	50	44	87%	49%	1	1
1020	KINESIOLOGY	170	154	90%	72%	111	103	92%	60%	4	0
1623	LABOR STUDIES	11	11	100%	81%	9	8	88%	72%	0	1
1031	LANDSCAPE ARCHITECTURE	6	6	100%	100%	6	6	100%	100%	0	0
1015	LAW	15	12	79%	100%	12	12	100%	79%	0	0
1643	LAW ENFORCEMENT	14	12	85%	83%	10	9	89%	64%	0	2
1592	LEGAL ASSISTING	123	109	88%	69%	76	67	88%	54%	8	2
1836	LEGAL SECRETARIAL SPECIALIST	1	1	100%	100%	1	0	0%	0%	0	0
1046	LIBERAL ARTS	7422	6623	89%	70%	4687	4264	90%	57%	50	14

STUDENT RETENTION BY DECLARED MAJOR 2001-2002

Source: AFA 999, 7/31/02

Major Code	Major Title	Initial Fall Enrollment	Initial Fall Completion	Within Semester Completion Initial Fall	Percentage of Fall Completers Enrolled in Spring	Spring Enrollment	Spring Completion	Within Semester Completion Spring	Initial Fall Who Completed Spring Semester	Grad	Cert
1178	LIBERAL STUDIES/SOC STUDIES ED	1	0	0%	0%	1	1	100%	100%	0	0
1016	LIBRARIANSHIP	2	2	100%	0%	0	0	0%	0%	0	0
1581	MANAGEMENT	124	112	90%	65%	73	64	87%	51%	10	9
1551	MANAGEMENT - HUMAN RESOURCES	1	1	100%	100%	1	1	100%	100%	0	0
1602	MANAGEMENT-FINANCIAL MGT OPT	28	23	82%	78%	18	17	94%	60%	2	3
1539	MANAGEMENT-INTERNATIONAL BUSINESS	4	4	100%	50%	2	2	100%	50%	0	0
1712	MANAGEMENT-OPERATIONS MANAGEMENT OPT.	14	11	78%	45%	5	4	79%	28%	0	0
1584	MANAGEMENT-PRODUCTION MGT OPT	2	2	100%	50%	1	1	100%	50%	0	0
1830	MARKETING	6	5	83%	59%	3	2	66%	33%	0	0
1017	MATHEMATICS	58	52	89%	73%	38	36	94%	62%	0	0
1121	MECHANICAL ENGINEERING	9	9	100%	55%	5	4	79%	44%	0	0
1552	MEDICAL ASSISTANT	2	2	100%	0%	0	0	0%	0%	0	0
1580	MEDICAL ASSISTING TECHNOLOGY	80	70	87%	69%	49	47	95%	58%	0	1
1515	MEDICAL OFFICE ADMINISTRATIVE ASST	25	24	95%	75%	18	17	94%	67%	0	0
1018	MEDICAL TECHNOLOGY	3	3	100%	66%	2	1	50%	33%	0	0
1834	MEDICAL TRANSCRIPTION SPECIALIST	14	14	100%	85%	12	12	100%	85%	0	2
1042	MEDICINE	329	291	88%	75%	221	202	91%	61%	4	1
1599	MENTAL HEALTH TECHNOLOGY	9	8	88%	75%	6	5	83%	55%	0	0
1123	MEXICAN-AMERICAN STUDIES	2	2	100%	50%	1	1	100%	50%	1	0
1514	MHT - DRUG & ALCOHOL COUNS CERT	17	15	88%	86%	13	10	76%	58%	0	0
1513	MHT - DRUG/ALCOHOL ABUSE COUNSELING	10	10	100%	69%	7	7	100%	69%	0	0
1839	MHT-DRUG/ALCOHOL ABUSE COUNSELING - 12 HOURS	2	0	0%	0%	0	0	0%	0%	0	0
1665	MICRO COMPUTERS/DATA ENTRY OPERATIONS	19	17	89%	70%	12	10	83%	52%	0	1
1666	MICROCOMPUTER SPECIALIST	17	16	94%	68%	11	10	90%	58%	5	2
1667	MICROCOMPUTER TECHNICIAN	8	7	87%	71%	5	5	100%	62%	0	0
2000	MISSING MAJOR	52	42	80%	47%	20	18	89%	34%	0	0
1832	MORTGAGE BANKING	9	9	100%	44%	4	4	100%	44%	0	1
1591	MORTUARY SCIENCE	108	100	92%	67%	68	63	92%	58%	7	0
1019	MUSIC	174	165	94%	75%	124	114	91%	65%	0	0

STUDENT RETENTION BY DECLARED MAJOR 2001-2002

Source: AFA 999, 7/31/02

Major Code	Major Title	Initial Fall Enrollment	Initial Fall Completion	Within Semester Completion Initial Fall	Percentage of Fall Completers Enrolled in Spring	Spring Enrollment	Spring Completion	Within Semester Completion Spring	Initial Fall Who Completed Spring Semester	Grad	Cert
1541	NUCLEAR ELECTRONICS	2	2	100%	100%	2	1	50%	50%	0	0
1582	NURSING (RN)	481	452	93%	76%	345	342	99%	71%	172	0
1193	NURSING (2+2)	1	1	100%	100%	1	1	100%	100%	0	0
1033	NURSING (4-YEAR DEGREE)	423	368	86%	74%	275	241	87%	56%	2	0
1136	NUTRITION	4	4	100%	75%	3	3	100%	75%	0	0
1616	OCCUPATIONAL SAFETY & HEALTH MGT	9	9	100%	44%	4	4	100%	44%	2	3
1545	OCCUPATIONAL SAFETY & HEALTH TECH	4	3	75%	100%	3	2	66%	50%	0	0
1525	OFFICE ASSISTANT CERTIFICATE	9	9	100%	66%	6	5	83%	55%	0	1
1501	OFFICE SYSTEMS SPECIALIST	16	16	100%	62%	10	7	69%	43%	1	0
1660	OFFICE SYSTEMS TECHNICIAN	30	29	96%	72%	21	17	80%	56%	1	6
1689	OFFICE/COMP SYSTEMS TRNG PROG	1	1	100%	0%	0	0	0%	0%	0	0
1802	OPERATIONS MANAGEMENT	10	9	89%	0%	0	0	0%	0%	0	0
1825	ORACLE	13	13	100%	46%	6	4	66%	30%	0	3
1828	PERSONAL INJURY PARALEGAL	2	2	100%	100%	2	2	100%	100%	0	0
1050	PHARMACY	1	1	100%	0%	0	0	0%	0%	0	0
1029	PHILOSOPHY	13	11	84%	72%	8	8	100%	61%	0	0
1052	PHOTOGRAPHY	86	81	94%	74%	60	54	89%	62%	2	0
1034	PHYSICAL & NATURAL SCIENCE	1	0	0%	0%	0	0	0%	0%	0	0
1049	PHYSICAL THERAPY	13	12	92%	75%	9	9	100%	69%	0	0
1021	PHYSICS	15	13	86%	76%	10	8	79%	53%	0	0
1128	POLITICAL SCIENCE	21	15	71%	79%	12	12	100%	57%	0	0
1700	PRE-NURSING	817	721	88%	74%	538	478	88%	58%	2	0
1022	PSYCHOLOGY	571	481	84%	74%	356	317	89%	55%	10	0
1661	PUBLIC ADMINISTRATION	27	22	81%	72%	16	14	87%	51%	0	0
1561	PUBLIC ADMINISTRATIVE CAREERS	1	1	100%	100%	1	0	0%	0%	0	0
1044	RADIO-TV-FILM (ACADEMIC)	118	105	88%	77%	81	75	92%	63%	1	0
1686	RADIO-TV-FILM TECHNOLOGY	211	185	87%	78%	145	133	91%	63%	12	0
1804	REAL ESTATE MANAGEMENT	72	68	94%	69%	47	41	87%	56%	0	7
1813	REALTIME FOR BUSINESS	2	2	100%	100%	2	1	50%	50%	0	0
1565	RECORDS MANAGEMENT	13	13	100%	69%	9	8	88%	61%	2	3
1129	RELIGIOUS STUDIES	1	1	100%	100%	1	1	100%	100%	0	0
1605	SAFETY ENGINEERING TECH	7	7	100%	57%	4	4	100%	57%	1	0
1803	SMALL BUSINESS	6	5	83%	39%	2	2	100%	33%	0	1
1036	SOCIAL & BEHAVIORIAL SCIENCES	3	3	100%	33%	1	1	100%	33%	2	1

STUDENT RETENTION BY DECLARED MAJOR 2001-2002

Source: AFA 999, 7/31/02

Major Code	Major Title	Initial Fall Enrollment	Initial Fall Completion	Within Semester Completion Initial Fall	Percentage of Fall Completers Enrolled in Spring	Spring Enrollment	Spring Completion	Within Semester Completion Spring	Initial Fall Who Completed Spring Semester	Grad	Cert
1053	SOCIAL SERVICES	95	87	91%	83%	73	65	89%	68%	3	0
1170	SOCIAL WORK	11	9	81%	77%	7	6	85%	54%	1	1
1023	SOCIOLOGY	117	104	88%	59%	62	56	90%	47%	2	0
1833	SOFTWARE SPECIALIST	1	1	100%	100%	1	1	100%	100%	0	1
1117	SPANISH	12	11	91%	90%	10	10	100%	83%	0	0
1028	SPEECH	11	9	81%	55%	5	5	100%	45%	0	0
1722	SURVEYING ENGINEERING TECHNOLOGY	9	8	88%	62%	5	4	79%	44%	0	1
1823	SURVEYING TECHNICIAN I	1	1	100%	100%	1	1	100%	100%	0	0
1520	TEACHER ASSISTANT - LEVEL I	21	20	95%	79%	16	14	87%	66%	0	5
1521	TEACHER ASSISTANT - LEVEL II	10	10	100%	79%	8	8	100%	79%	0	5
1057	TEACHER EDUCATION	107	95	88%	74%	71	61	85%	57%	0	0
1688	TECHNICAL STUDIES	77	67	87%	79%	53	47	88%	61%	0	0
1027	UNDECLARED/UNKNOWN	39	34	87%	76%	26	22	84%	56%	0	2
1048	VETERINARY MEDICINE	5	5	100%	59%	3	3	100%	59%	0	0

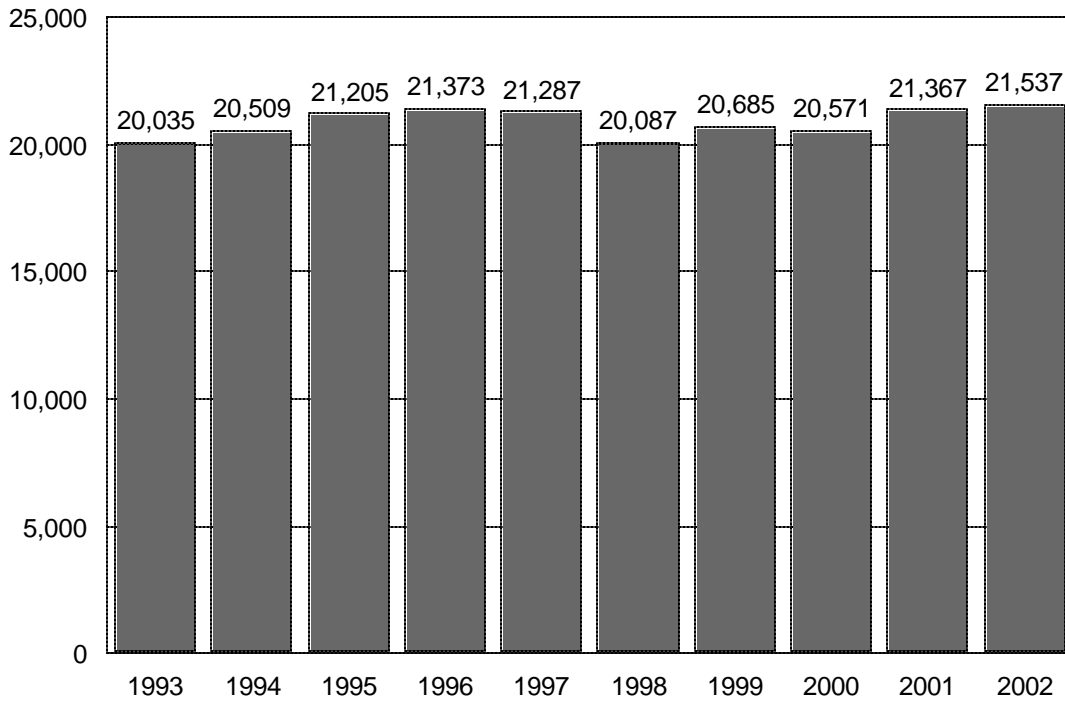
CONTENTS – ENROLLMENT TRENDS

ENROLLMENT TRENDS.....

Credit Programs:

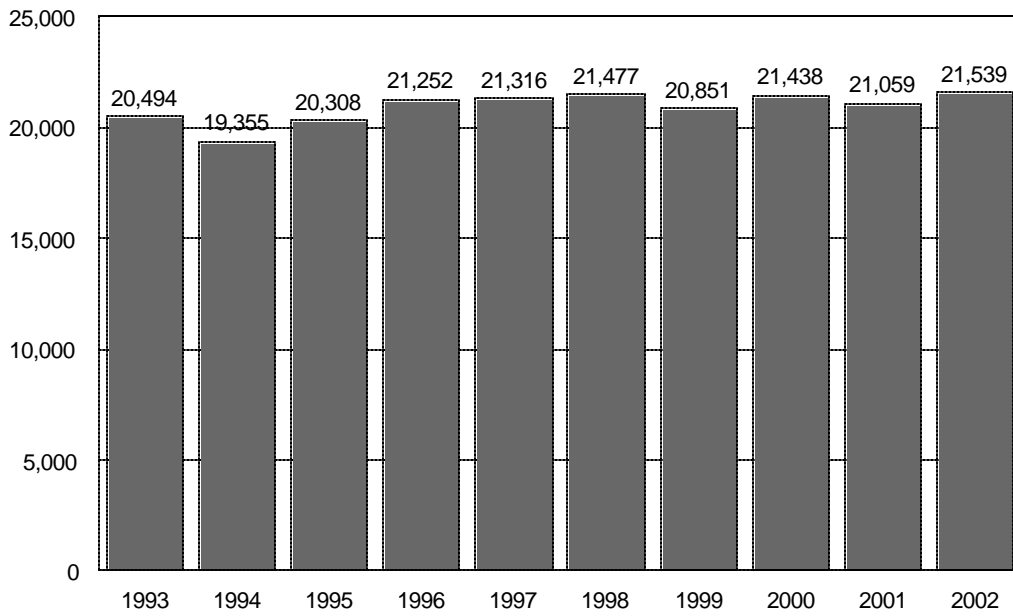
- Fall Semesters 1993-2002 and Spring Semesters 1993-2002.....39
- Summer I Sessions 1993-2002 & Summer II Sessions 1993-200240
- Enrollment Trends by Classification, Fall 1998-2002 (Summary Statistics).....41
- Gender.....42
- Ethnicity.....42
- Division.....43
- Part-Time vs. Full-Time43
- Day vs. Evening44
- Residency44
- Age.....45
- First-Time Students.....45
- Contact Hours, Fall & Spring Semesters 1998-200346
- Contact Hours, Summers I & II 1998-2002.....46
- Distance Education:
 - Dual Credit, Fall 1998 to Fall 200247
 - Distance Education Enrollment, Fall 1998 to Fall 2002.....48
- Developmental Education:
 - Enrollment Fall Semesters 1998-200249
 - Trends in Developmental English50
 - Trends in Developmental Math50
 - Trends in Developmental Reading50
- Continuing Education Training Network:
 - Total Enrollment 1997-2002.....51
 - Tuition/Fee Revenue 1997-2002.....51
 - Non-Credit Workforce Education Unduplicated Enrollment, Academic Years 1998-1999 to 2000-200151
 - Headcount Trends by Quarter 1998-2002.....52
 - Contact Hour Trends by Quarter 1998-2002.....52
 - Class Trends by Quarter 1998-2002.....52

ENROLLMENT FALL SEMESTERS 1993-2002



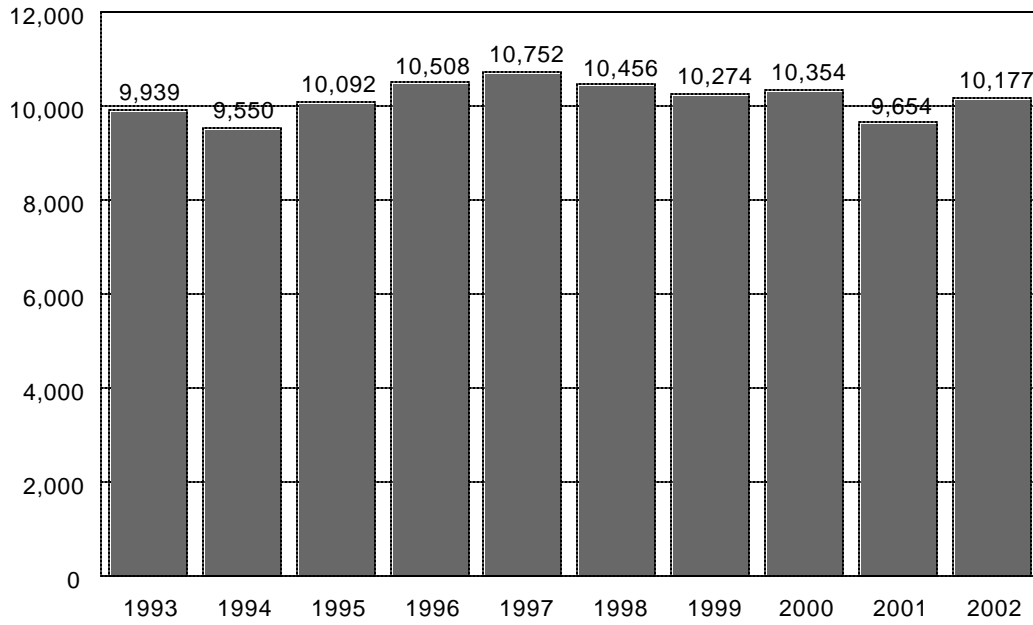
SOURCE: CBM001

ENROLLMENT SPRING SEMESTERS 1993-2002



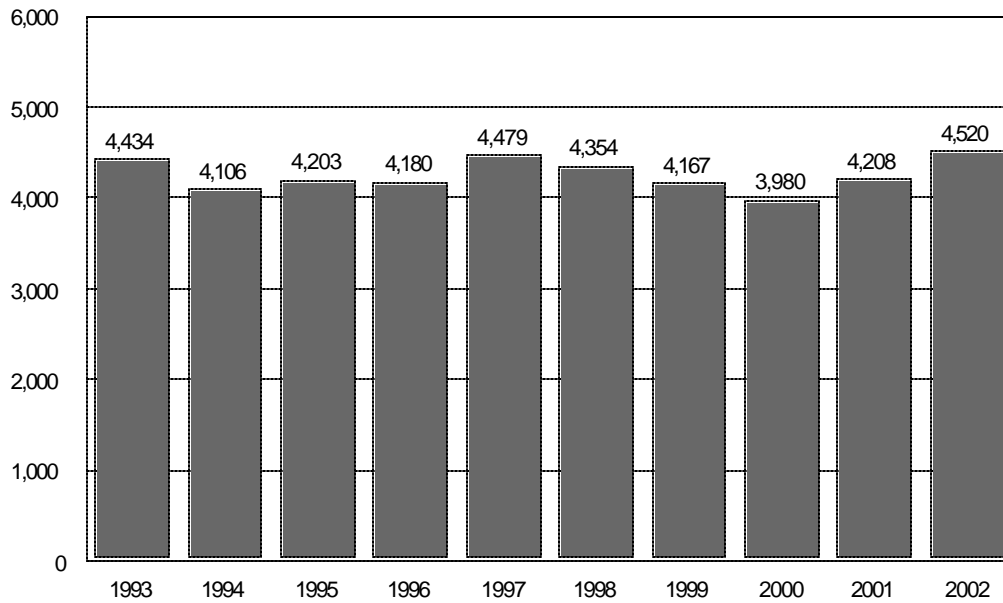
SOURCE: CBM001

ENROLLMENT SUMMER SESSION I 1993-2002



SOURCE: CBM001

ENROLLMENT SUMMER SESSION II 1993-2002



SOURCE: CBM001

ENROLLMENT TRENDS BY CLASSIFICATION – FALL 1998-2002

	1998	1999	2000	2001	2002
GENDER					
Female	11,497	11,997	11,946	12,387	12,658
Male	8,571	8,617	8,544	8,916	8,823
ETHNICITY					
White	8,175	8,292	8,097	8,817	8,828
Black	882	928	906	953	967
Hispanic	10,195	10,523	10,548	10,622	10,754
Other	816	871	939	911	932
AGE					
17 & under	824	1,148	1,220	1,579	1,482
18	1,743	1,908	1,753	1,948	1,966
19 - 21	5,657	5,756	5,967	5,967	5,893
22 - 24	3,260	3,307	3,259	3,397	3,412
25 - 30	3,726	3,720	3,642	3,756	3,849
31 - 35	1,706	1,604	1,571	1,622	1,750
36 - 50	2,821	2,815	2,655	2,606	2,671
51 - 64	316	348	401	405	435
65 & over	15	8	22	23	23
Average age	26.1	25.9	25.8	25.5	25.8
DIVISION					
Arts & Sciences	13,621	13,946	14,373	15,293	13,897
Prof/Tech	6,447	6,668	6,117	6,010	7,584
PART-TIME vs. FULL-TIME					
Part-time	12,727	13,035	13,120	13,459	13,542
Full-time	7,341	7,579	7,370	7,844	7,939
DAY vs. EVENING					
Day	13,219	13,581	13,540	14,528	14,789
Evening	3,943	3,945	3,636	3,551	3,489
Concurrent	2,906	3,088	3,314	3,224	3,203
RESIDENCY					
Texas Counties	19,253	19,699	19,540	20,356	20,575
Other States	569	630	635	667	616
Foreign Countries	246	285	315	280	290
TOTAL	* 20,068	* 20,614	* 20,490	* 21,303	* 21,481

SOURCE: CBM001; RCA003

* Total does not include flexible entry students for whom no demographic data are available.

Total fall 98 enrollment is 20,087

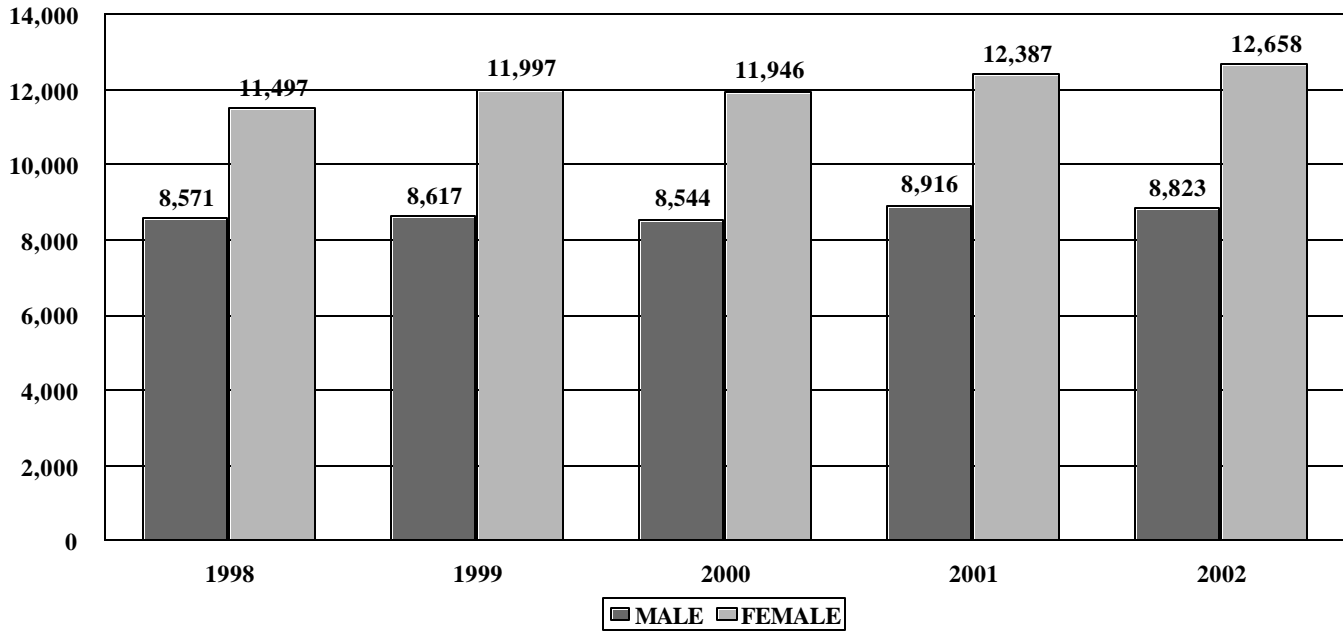
Total fall 99 enrollment is 20,685

Total fall 00 enrollment is 20,571

Total fall 01 enrollment is 21,367

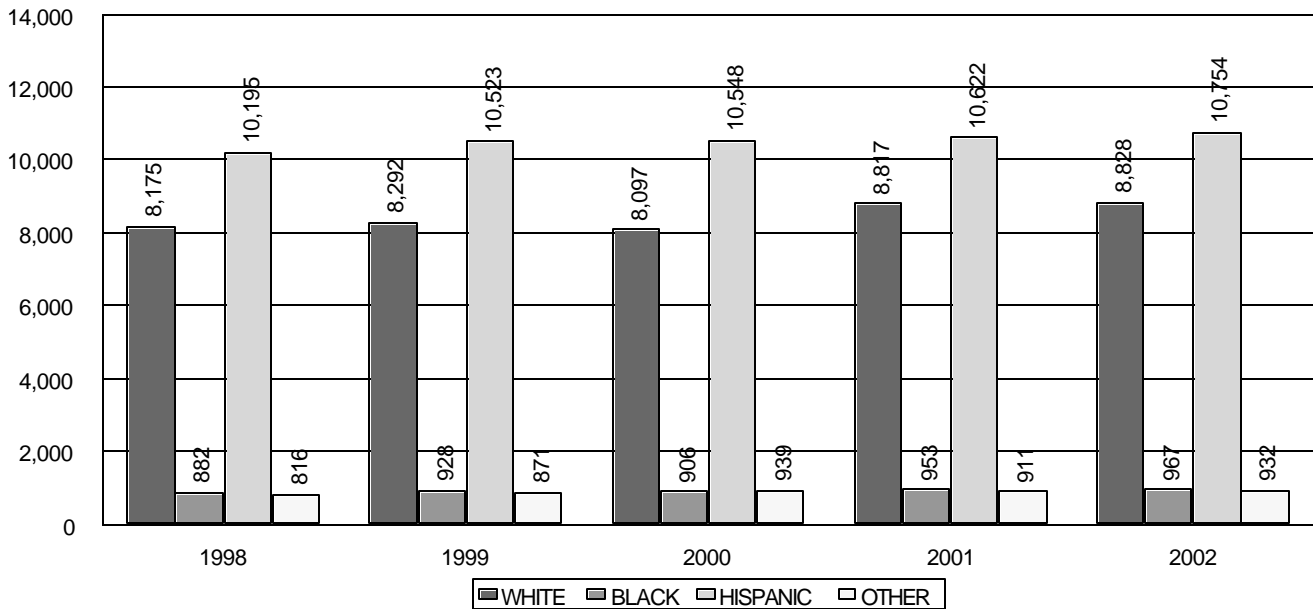
Total fall 02 enrollment is 21,537

GENDER FALL 1998-2002



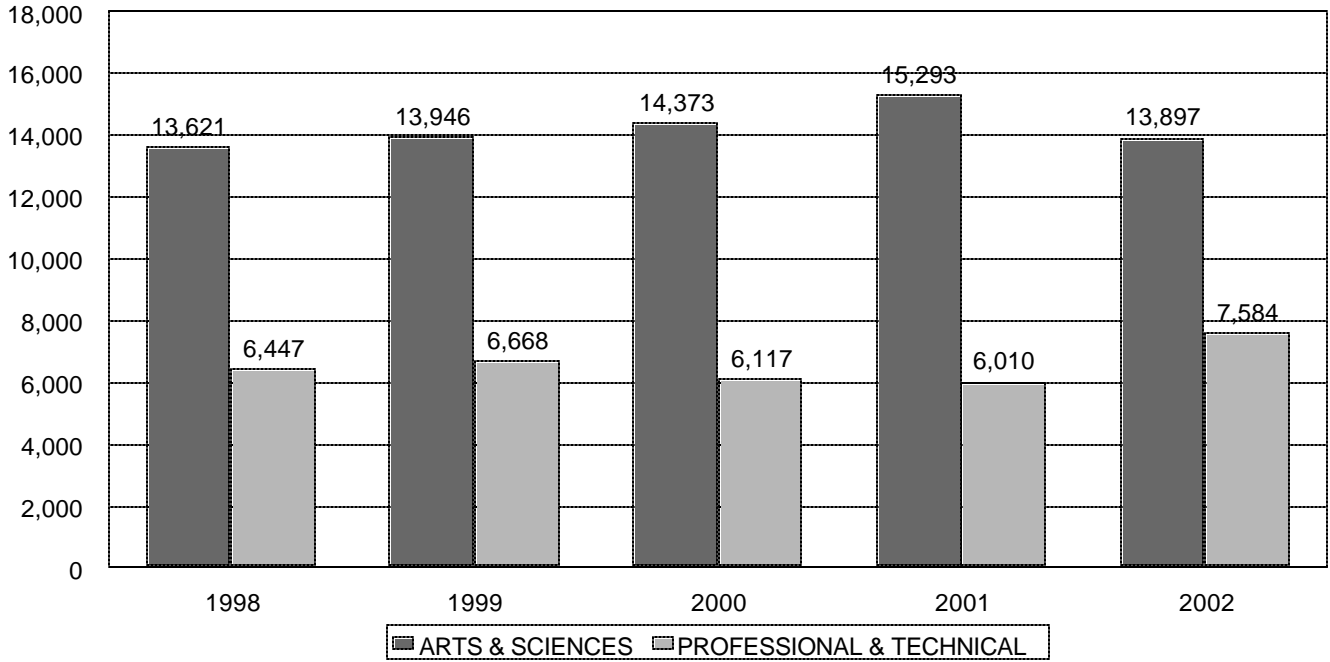
SOURCE: CBM001

ETHNICITY FALL 1998-2002



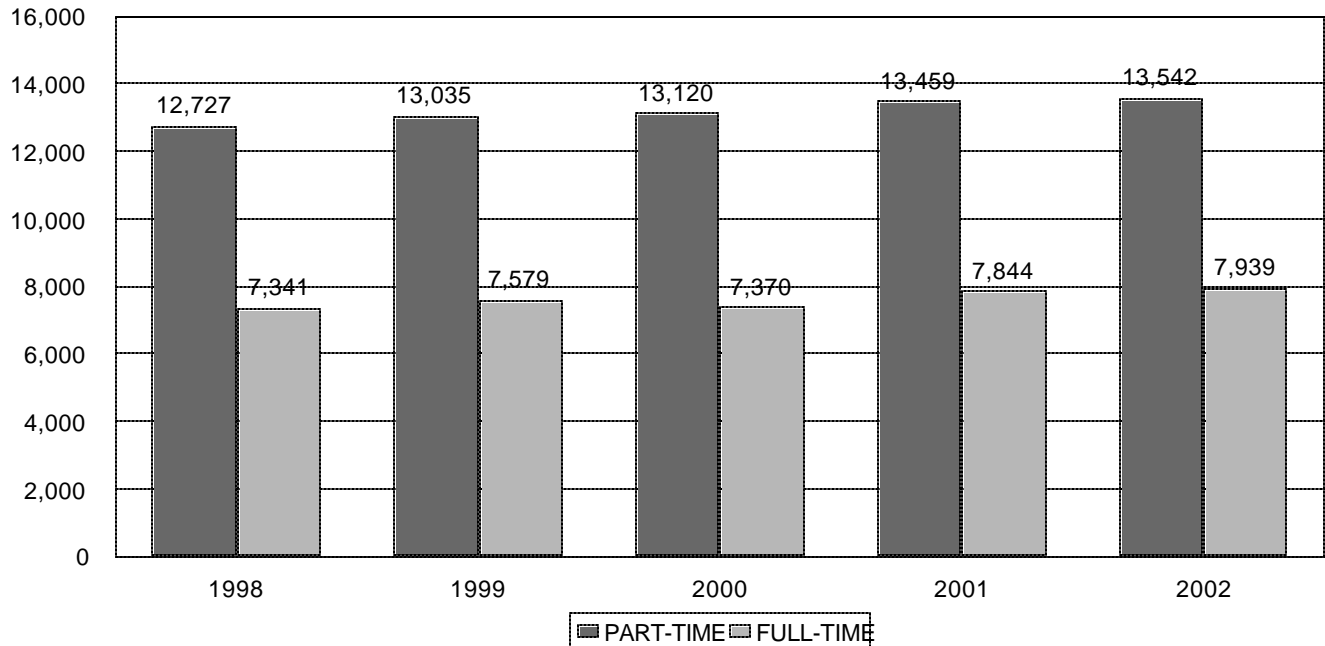
SOURCE: CBM001

DIVISION FALL 1998-2002



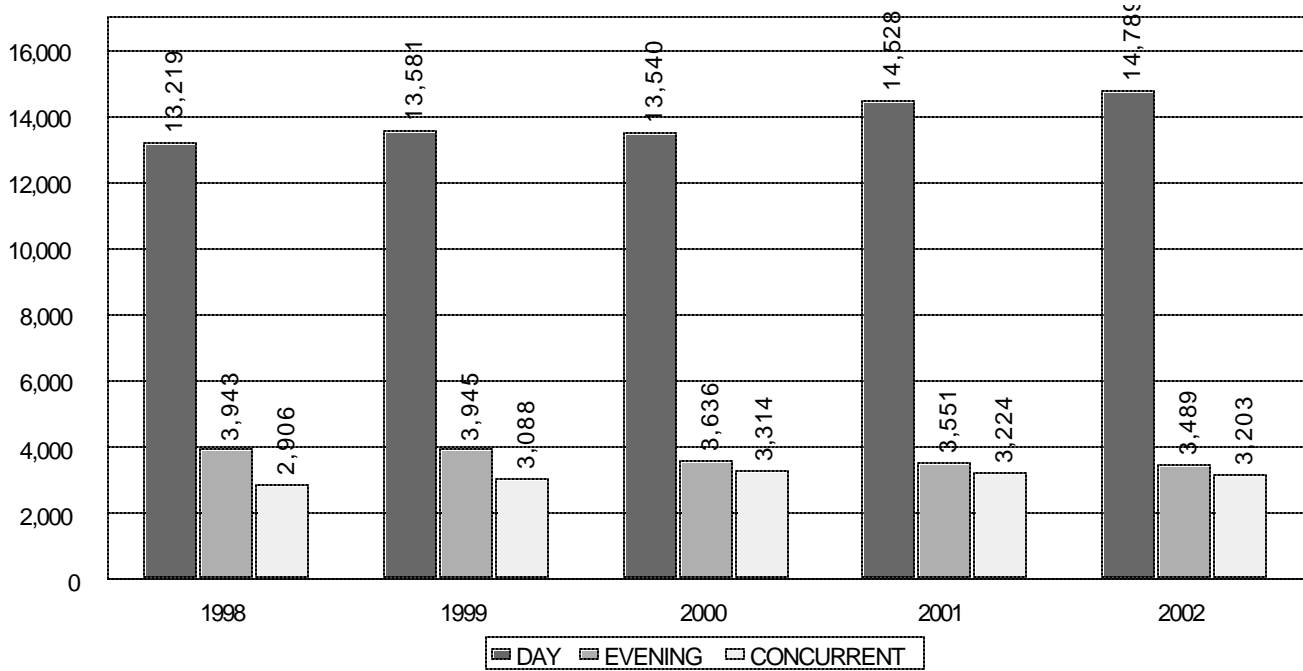
SOURCE: CBM001

PART-TIME VS. FULL-TIME FALL 1998-2002



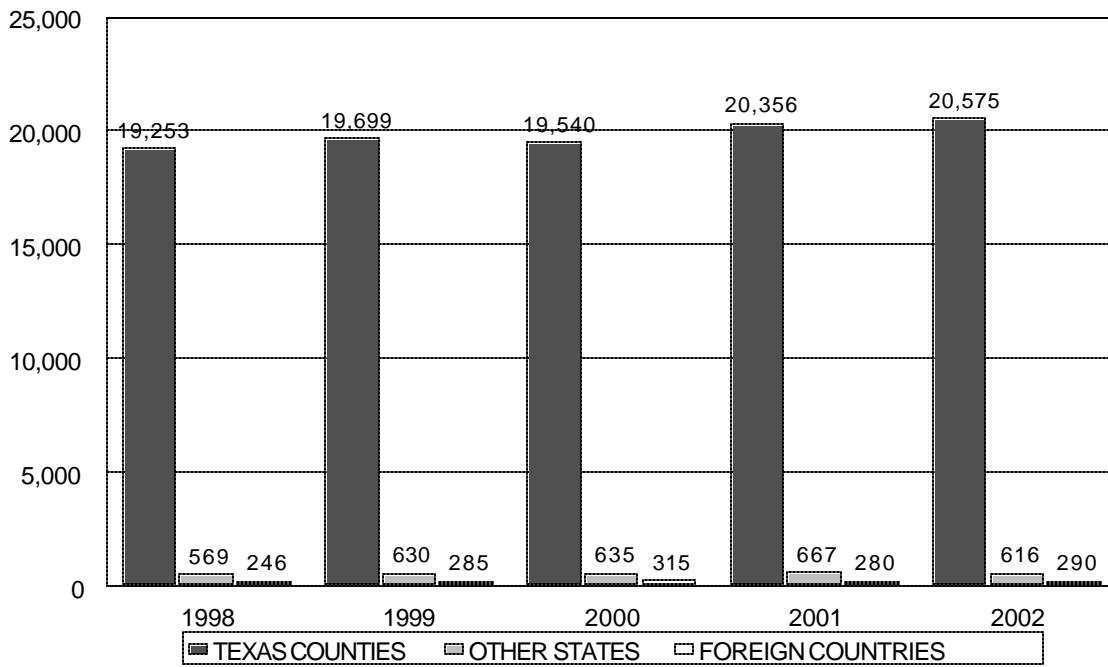
SOURCE: CBM001; RCA003

DAY VS. EVENING FALL 1998-2002



SOURCE: CBM001; RCA003

RESIDENCY FALL 1998-2002



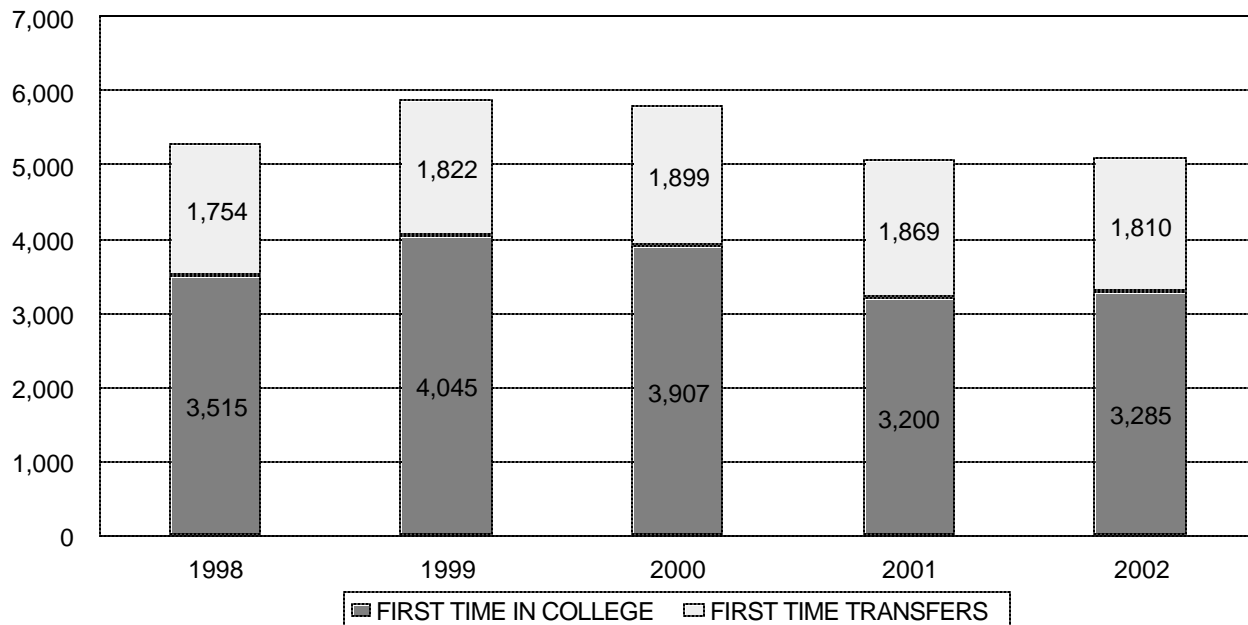
SOURCE: CBM001

AGE FALL 1998-2002

AGE	1998	1999	2000	2001	2002
17 & UNDER	824	1,148	1,220	1,579	1,482
18	1,743	1,908	1,753	1,948	1,966
19 – 21	5,657	5,756	5,967	5,967	5,893
22 – 24	3,260	3,307	3,259	3,397	3,412
25 – 30	3,726	3,720	3,642	3,756	3,849
31 – 35	1,706	1,604	1,571	1,622	1,750
36 – 50	2,821	2,815	2,655	2,606	2,671
51 – 64	316	348	401	405	435
65 & OVER	15	8	22	23	23
AVG. AGE	26.1	25.9	25.8	25.5	25.8

SOURCE: CBM001

FIRST-TIME STUDENTS FALL 1998-2002



SOURCE: CBM001

CONTACT HOURS FALL & SPRING SEMESTERS 1998-2003

SEMESTER	ACADEMIC	PROF/TECH	TOTAL
FALL 1998 SPRING 1999*	2,563,056 2,360,928	709,776 830,448	3,272,832 3,191,376
FALL 1999 SPRING 2000*	2,612,240 2,455,728	707,904 838,240	3,320,144 3,293,968
FALL 2000 SPRING 2001*	2,608,000 2,405,744	673,776 780,352	3,281,776 3,186,096
FALL 2001 SPRING 2002*	2,750,352 2,558,048	715,216 759,280	3,465,568 3,317,328
FALL 2002 SPRING 2003*	2,764,416 2,673,168	700,944 763,008	3,465,360 3,436,176

SOURCE: Records and Reports Summary Table CBM004; *includes Fall Flex II terms

CONTACT HOURS SUMMERS I & II 1998-2002

SEMESTER	ACADEMIC	PROF/TECH	TOTAL
SUM I 1998* SUM II 1998	646,208 312,416	242,128 30,950	888,336 343,366
SUM I 1999* SUM II 1999	613,056 293,840	274,296 30,496	887,352 324,336
SUM I 2000* SUM II 2000	625,040 288,384	247,680 26,728	872,720 315,112
SUM I 2001* SUM II 2001	602,000 310,864	162,336 24,832	764,336 335,696
SUM I 2002* SUM II 2002	636,144 325,792	167,232 23,232	803,376 349,024

SOURCE: Records and Reports Summary Table CBM004; *includes Spring Flex II terms

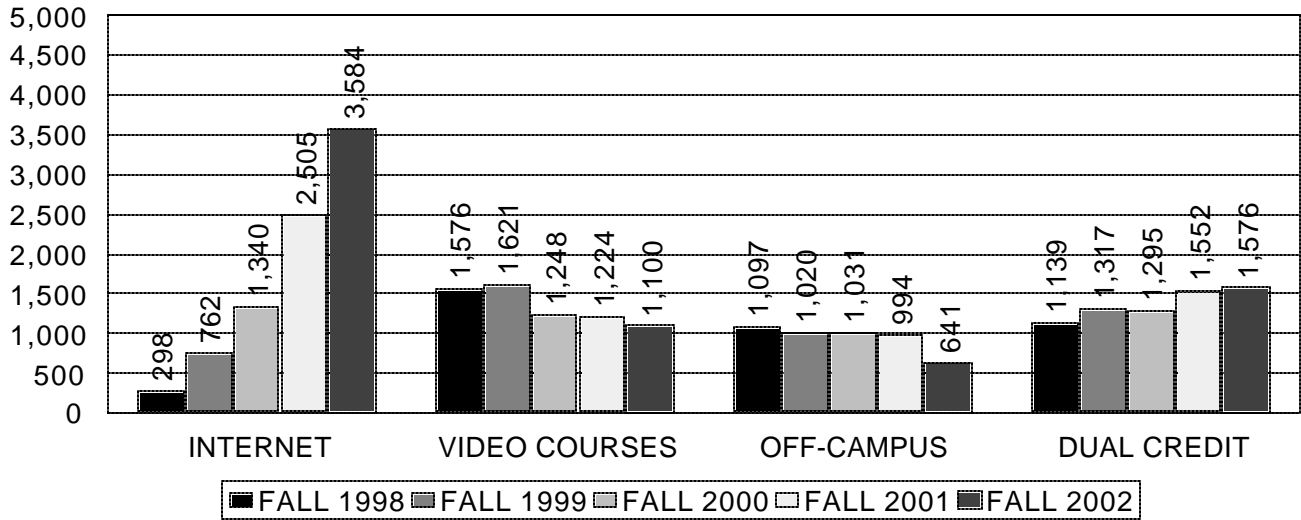
DUAL CREDIT -- FALL 1998 TO FALL 2002

	Fall 1998	Fall 1999	Fall 2000	Fall 2001	Fall 2002
Alamo Heights	143	142	206	150	111
Antonian					115
Bandera	45	90	81	96	84
Boerne					40
Braken Christian					21
Business Careers					17
Canyon	56	75	64	156	69
Castle Hills					15
Center Point	11	14	17	19	19
Churchill					158
Clark					24
Edison	5	26		26	
Falfurrias			14	3	
Harlandale	6	5		10	6
Highlands	30			11	
ISA					8
Kenedy (Texas)					31
Lee					34
MacArthur					97
Madison					57
McCollum (reported with Harlandale)		19		7	
Natalia					5
Navarro					9
New Braunfels	23	55		14	15
Nixon-Smiley					20
Providence					13
Reagan					289
Roosevelt					38
San Marcos Baptist					2
Seguin					80
Tivy (Kerrville)	176	140	141	151	133
Home Schools					49
San Antonio College		51			
Brownsville ISD		32	51	93	
Edgewood ISD			16		
North East ISD	545	572	562	738	
Northside ISD	99	96	84	46	
San Antonio ISD			44	18	
Southside ISD			15	14	17
TOTAL	1,139	1,317	1,295	1,552	1,576

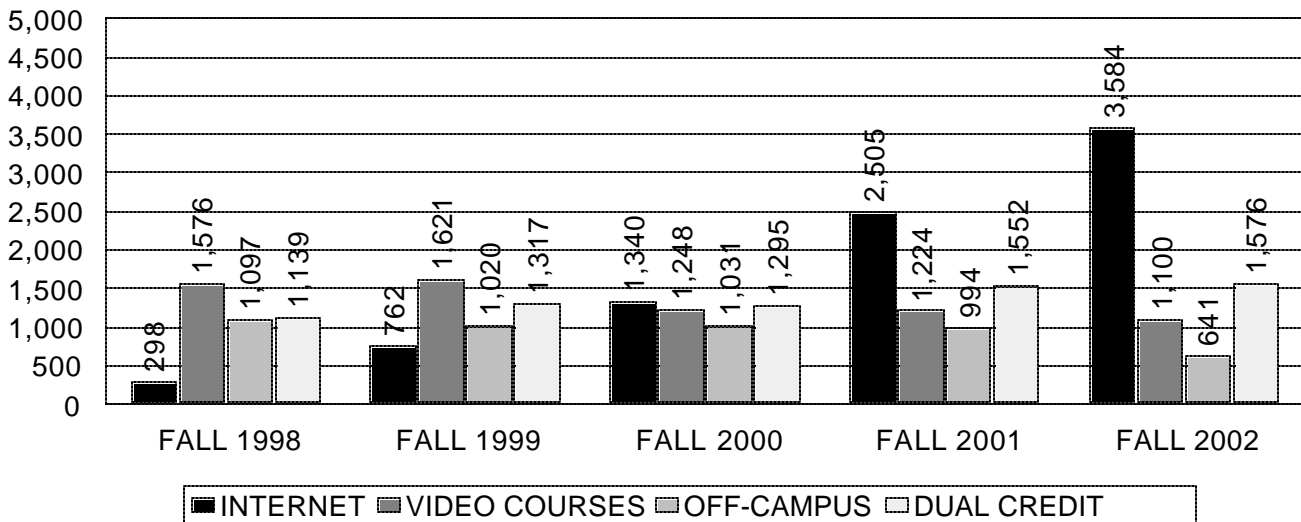
SOURCE: Evening, Weekend & Distance Education

**DISTANCE EDUCATION – ENROLLMENT HEADCOUNT
FALL 1998 TO FALL 2002**

BY TYPE OF COURSE



BY TERM OF ENROLLMENT



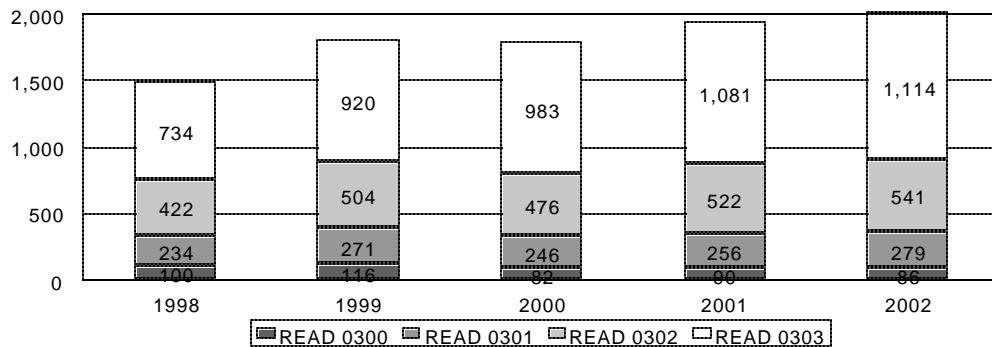
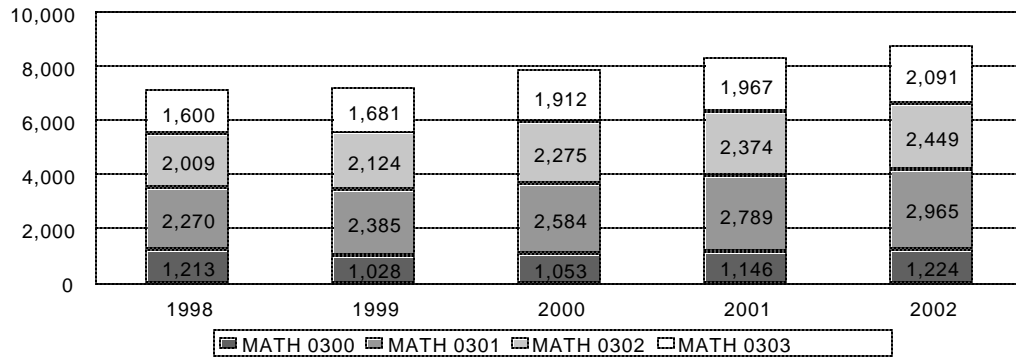
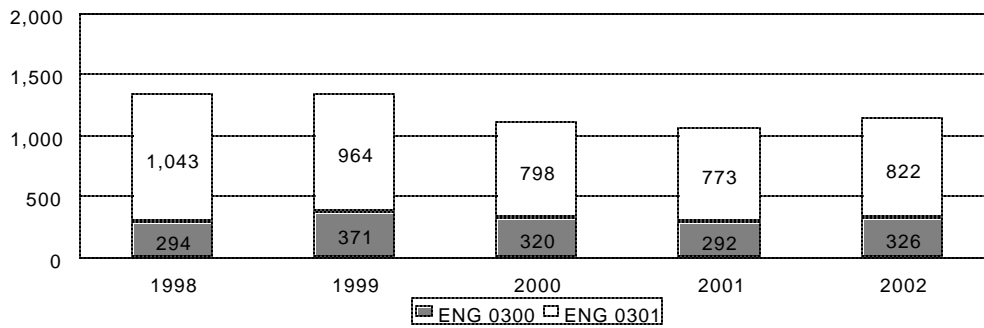
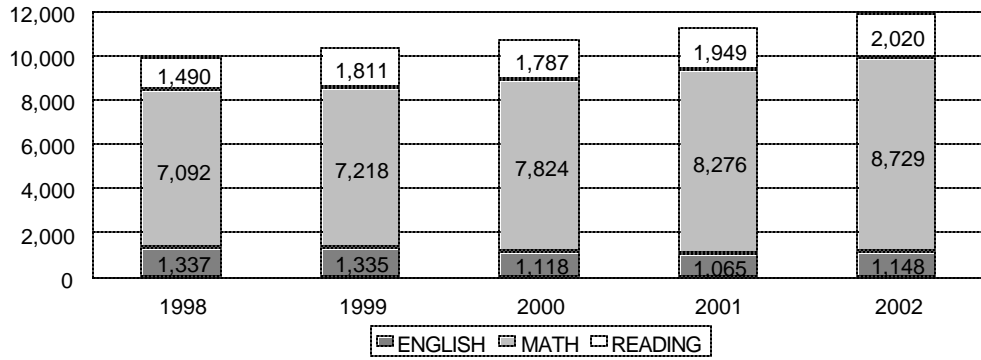
SOURCE: Evening, Weekend, and Distance Education

**DEVELOPMENTAL EDUCATION
FALL SEMESTERS 1998-2002**

COURSE		1998	1999	2000	2001	2002
ENGL 0300	ENROLLMENT SECTIONS	294 16	371 18	320 17	292 15	326 16
ENGL 0301	ENROLLMENT SECTIONS	1,043 53	964 48	798 37	773 37	822 39
TOTAL	ENROLLMENT SECTIONS	1,337 69	1,335 66	1,118 54	1,065 52	1,148 55
MATH 0300	ENROLLMENT SECTIONS	1,213 51	1,028 46	1,053 44	1,146 46	1,224 46
MATH 0301	ENROLLMENT SECTIONS	2,270 87	2,385 84	2,584 89	2,789 92	2,965 102
MATH 0302	ENROLLMENT SECTIONS	2,009 75	2,124 83	2,275 87	2,374 89	2,449 92
MATH 0303	ENROLLMENT SECTIONS	1,600 58	1,681 71	1,912 72	1,967 78	2,091 82
TOTAL	ENROLLMENT SECTIONS	7,092 271	7,218 284	7,824 292	8,276 305	8,729 322
READ 0300	ENROLLMENT SECTIONS	100 7	116 6	82 5	90 6	86 5
READ 0301	ENROLLMENT SECTIONS	234 15	271 14	246 13	256 13	279 13
READ 0302	ENROLLMENT SECTIONS	422 21	504 24	476 22	522 26	541 26
READ 0303	ENROLLMENT SECTIONS	734 29	920 38	983 41	1,081 46	1,114 46
TOTAL	ENROLLMENT SECTIONS	1,490 72	1,811 82	1,787 81	1,949 91	2,020 90
TOTAL	ENROLLMENT SECTIONS	9,919 412	10,364 432	10,729 427	11,290 448	11,897 467

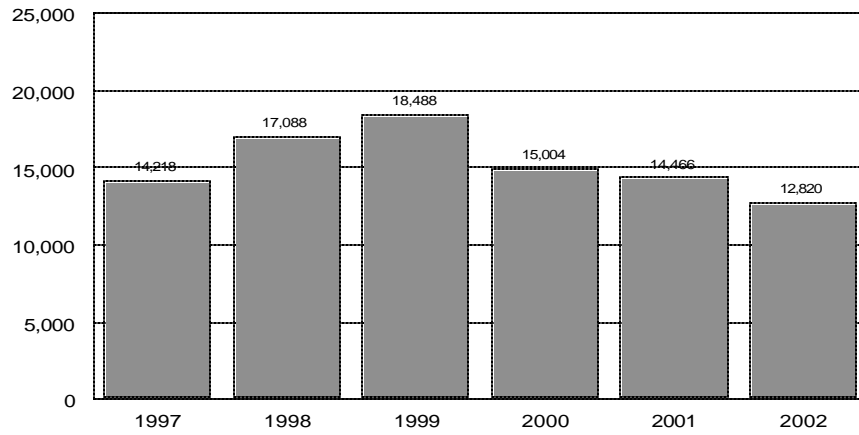
SOURCE: CBM004 (1998-2000); AFA055 (2001-2002)

**DEVELOPMENTAL EDUCATION
FALL SEMESTERS 1998-2002**

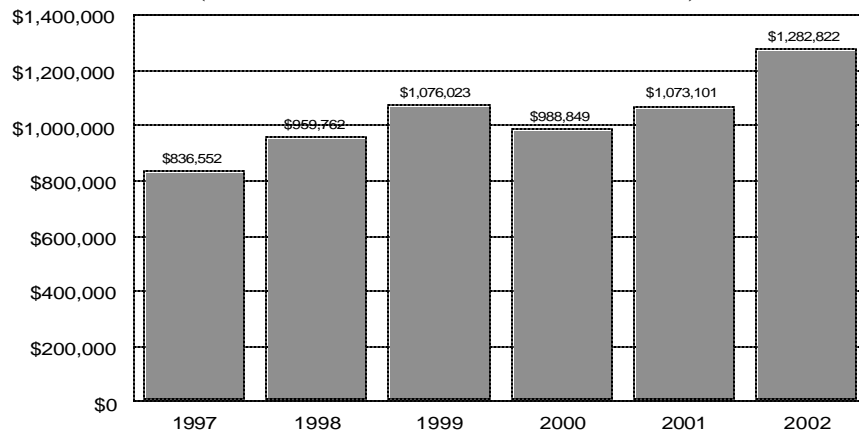


SOURCE: CBM004 (1998-2000); AFA055 (2001-2002)

**CONTINUING EDUCATION TRAINING NETWORK
TOTAL ENROLLMENT 1997 - 2002**
(Reimbursable & nonreimbursable duplicate headcount)

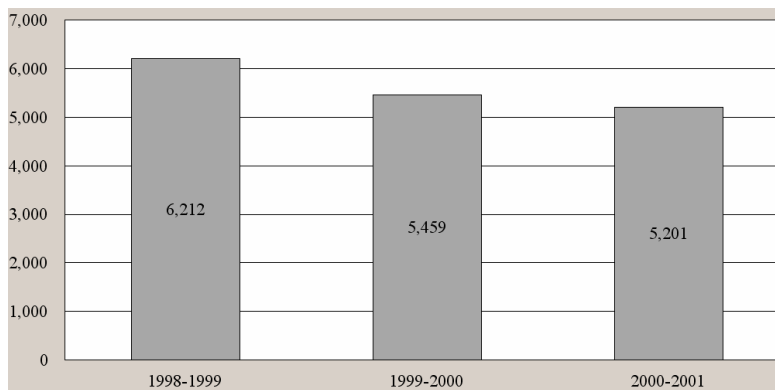


TUITION/FEE REVENUE 1997-2002
(Reimbursable & nonreimbursable courses)



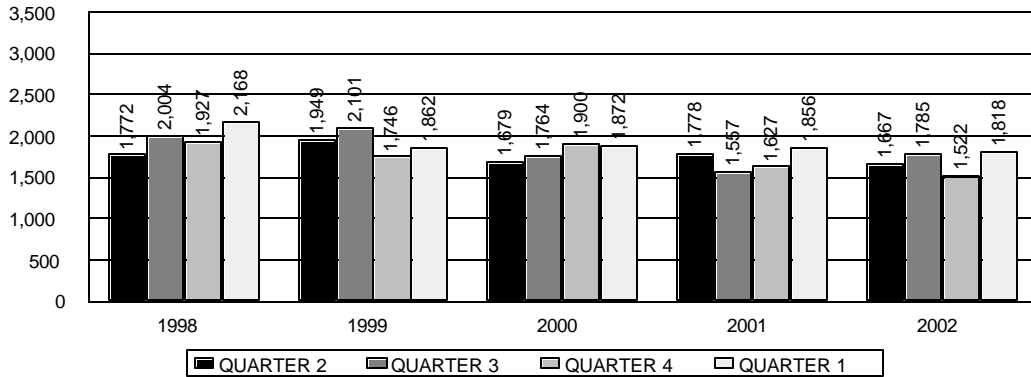
SOURCE: Division of Continuing and Workforce Development

**NON-CREDIT WORKFORCE EDUCATION
UNDULICATED ENROLLMENT FOR ACADEMIC YEARS 1998-1999 to 2000-2001**

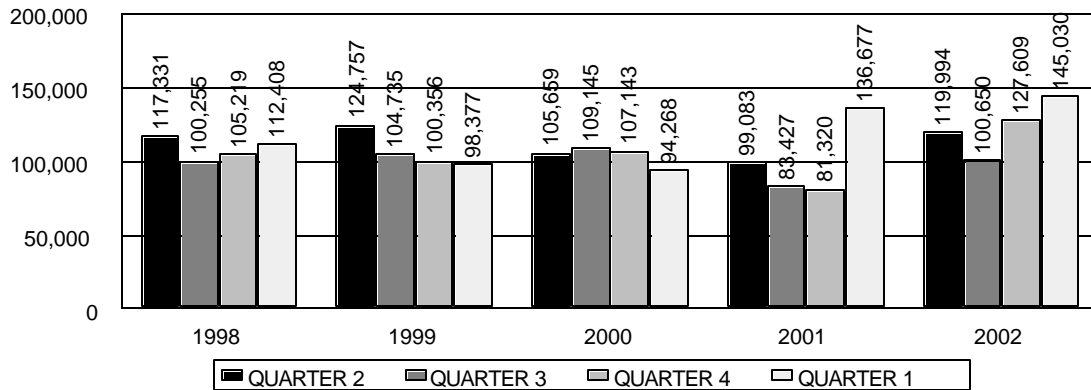


SOURCE: THECB Texas Public Community and Technical Colleges Statewide Fact Books, Years 2000, 2001, 2002

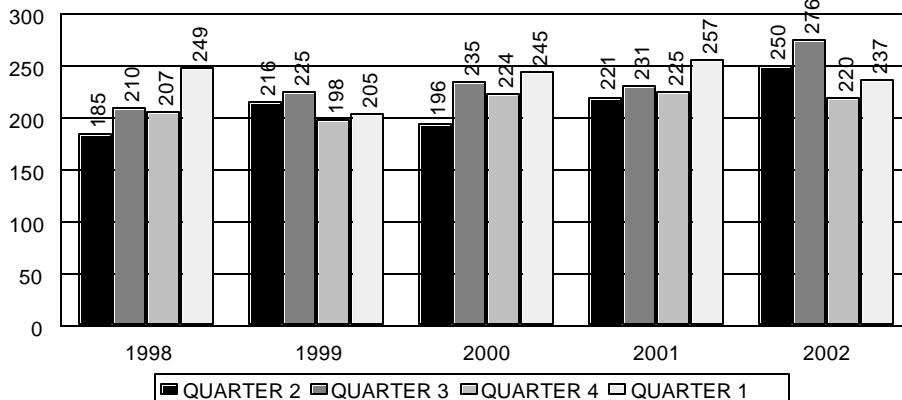
**CONTINUING EDUCATION TRAINING NETWORK 1998-2002
HEADCOUNT TRENDS BY QUARTER (reimbursable courses)**



CONTACT HOUR TRENDS BY QUARTER (reimbursable courses)



CLASS TRENDS BY QUARTER (reimbursable courses)



SOURCE: CBM00C Summary Report

CONTENTS – STATEWIDE TRENDS

STATEWIDE TRENDS.....

A COMPARISON OF SAN ANTONIO COLLEGE & STATEWIDE ENROLLMENT TRENDS:

TOTAL ENROLLMENT

 Unduplicated Number of Students Enrolled At Any Time During Academic Year

 By Ethnicity and Gender, 2001-200254

 By Type of Major, 1999-2000 to 2001-200255

 By Number of Hours Enrolled (San Antonio College), 2001-200256

 By Special Populations, 2001-200257

FIRST-TIME IN COLLEGE ENROLLMENT

 First-Time-in-College Students Receiving Remediation, Fall 200058

 By Gender.....58

 By Ethnicity58

 By Full-Time/Part-Time Status 58

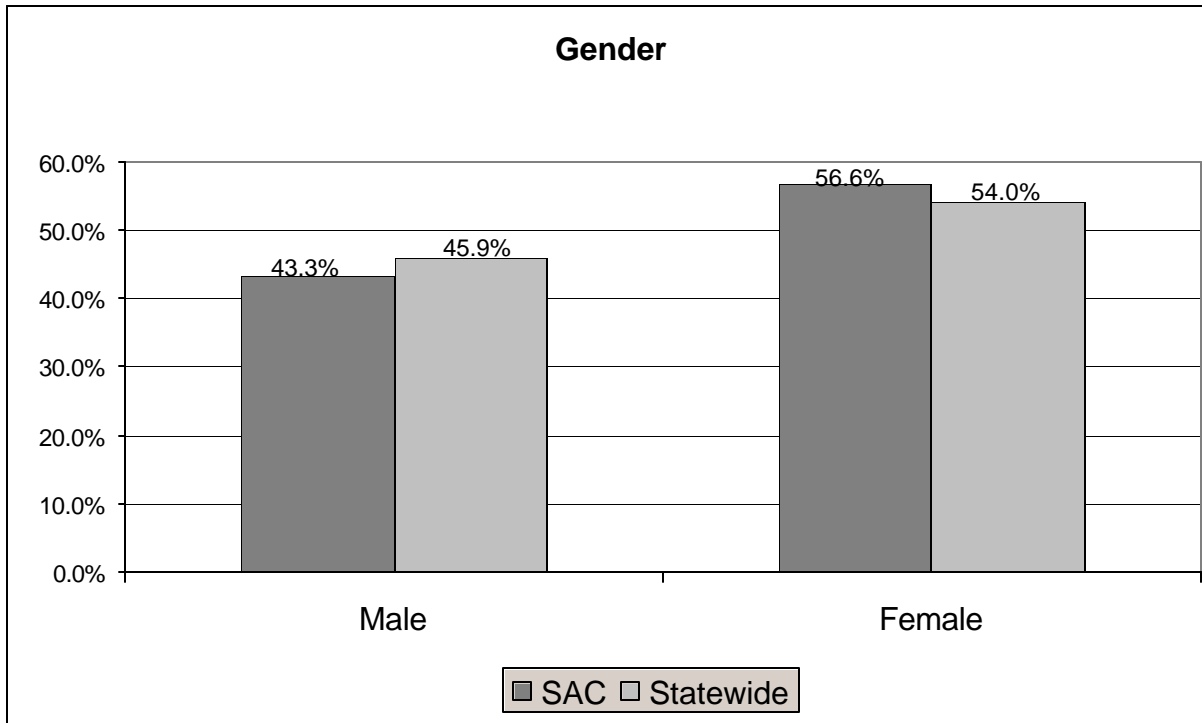
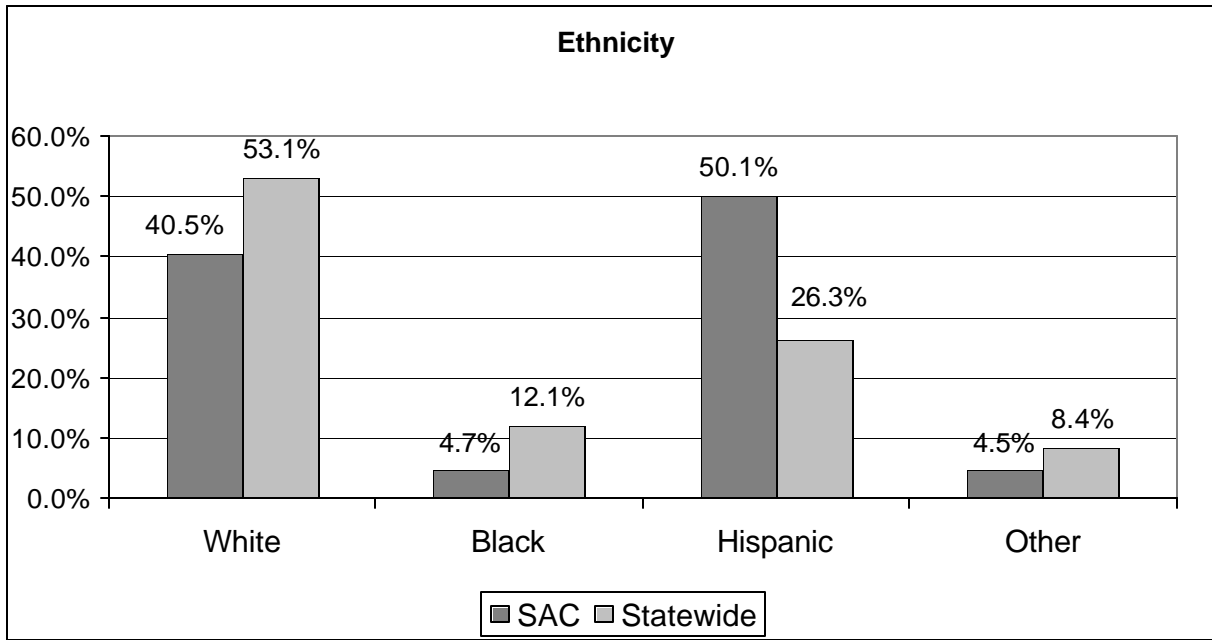
COHORT PROGRESSION ANALYSIS OF FTIC STUDENTS BY TYPE OF MAJOR

 Fall Semester, 1996.....59

 Fall Semester, 1997.....59

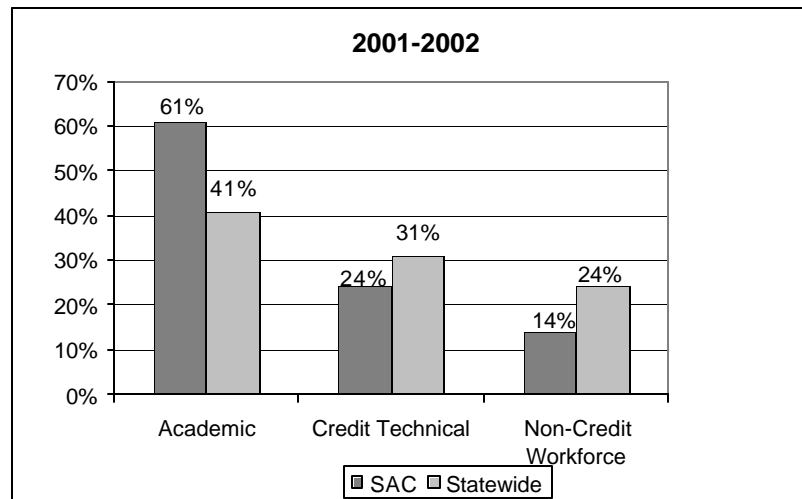
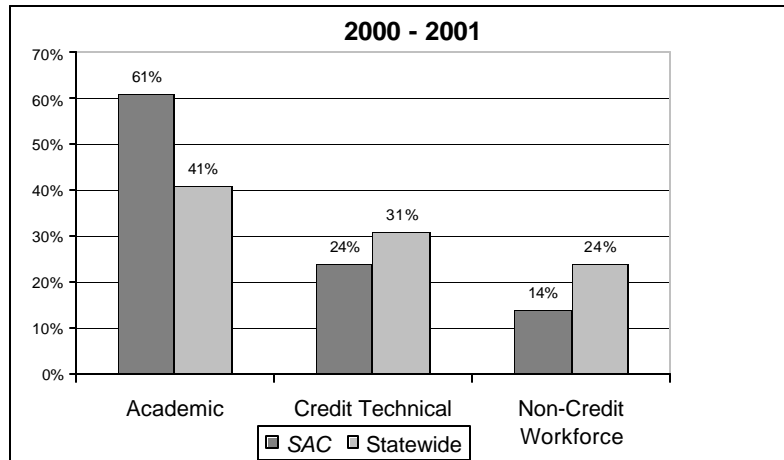
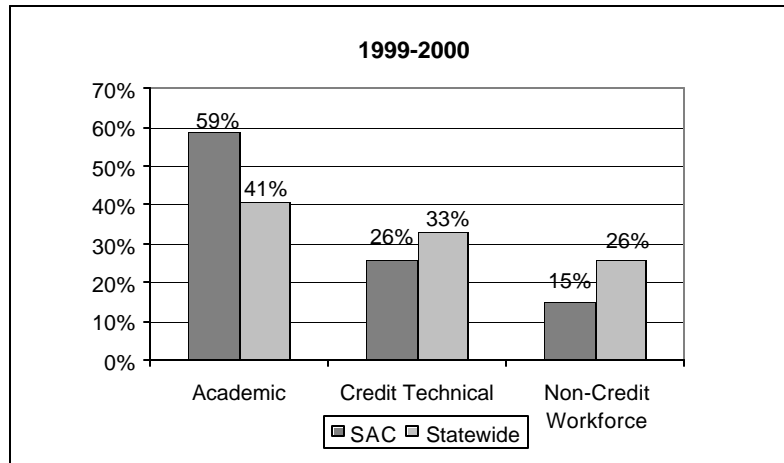
 Fall Semester, 1998.....59

**Unduplicated Number of Students Enrolled at any Time During the Academic Year
2001-2002 by Ethnicity and Gender**



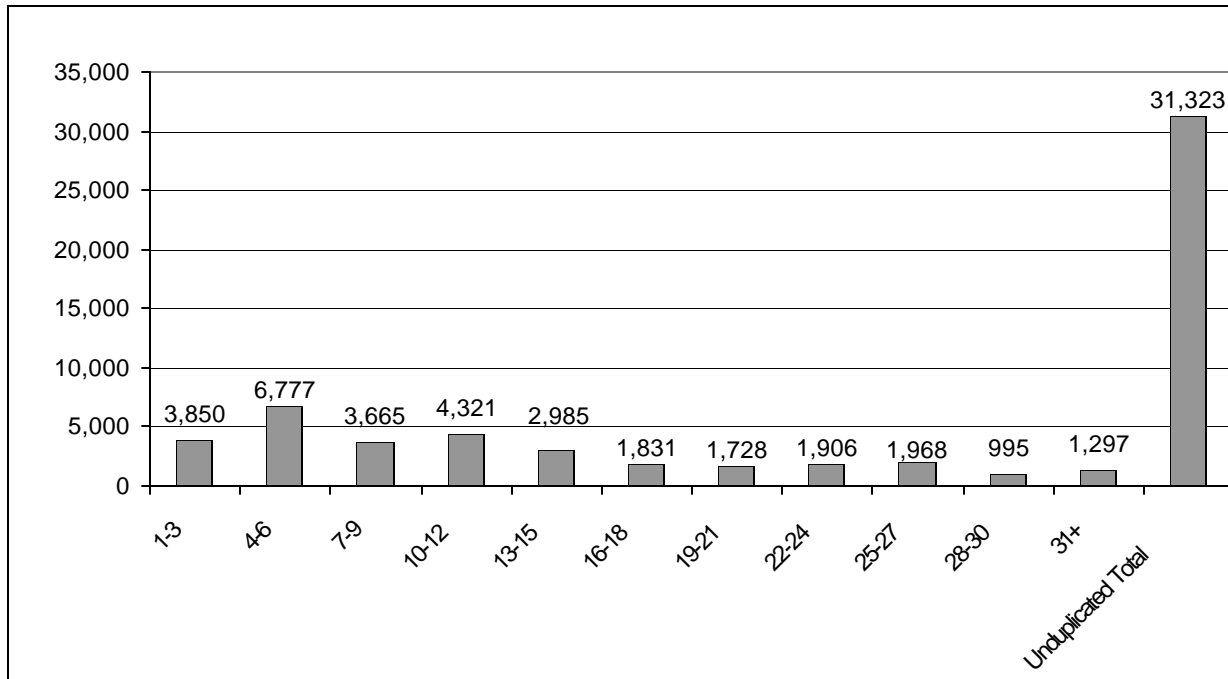
Source: THECB Texas Public Community and Technical Colleges Statewide 2002 Fact Book

UNDUPLICATED NUMBER OF STUDENTS ENROLLED AT ANY TIME DURING ACADEMIC YEARS 1999-2000 TO 2001-2002 BY TYPE OF MAJOR



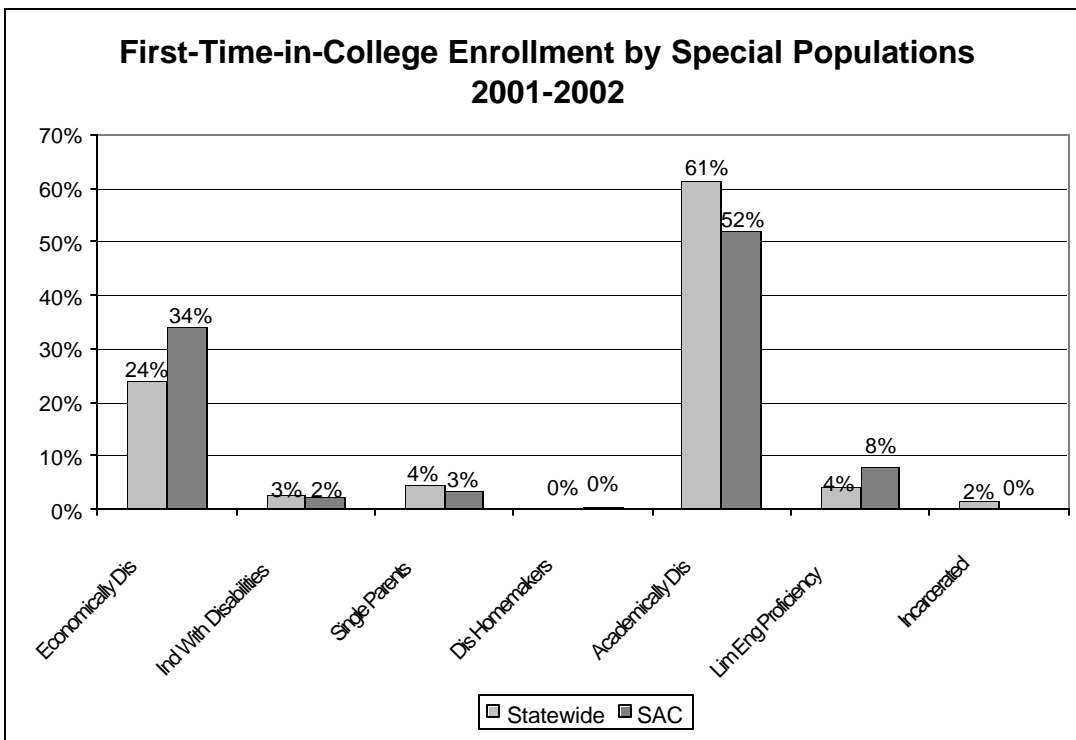
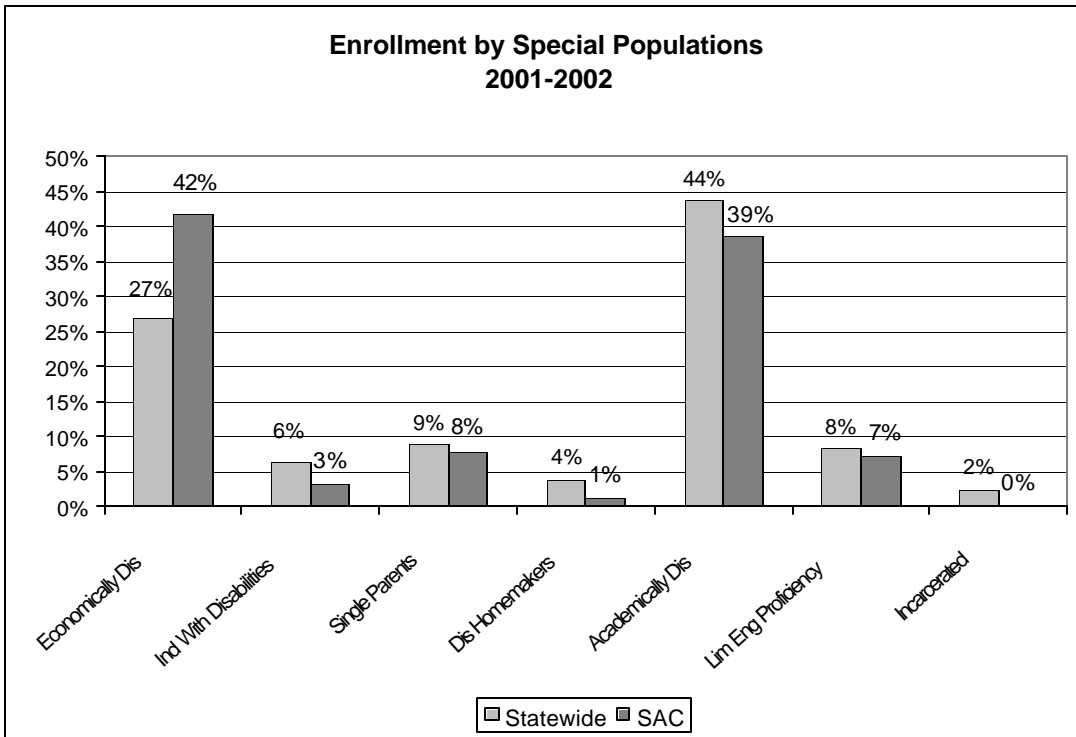
Source: THECB Texas Public Community and Technical Colleges Statewide 2002 Fact Book

**Unduplicated Number of Credit Students by Number of Hours Enrolled 2001-2002
San Antonio College**



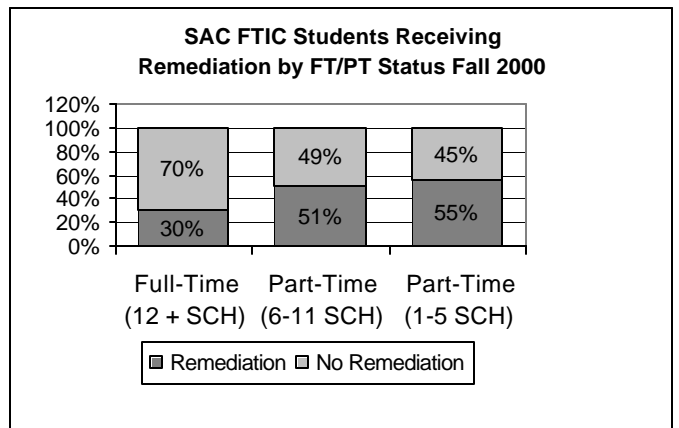
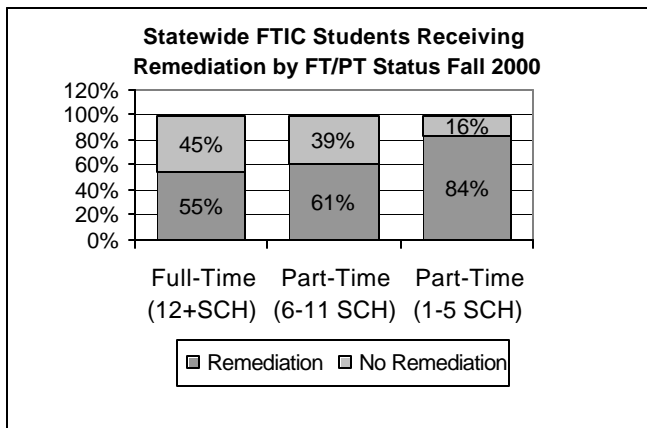
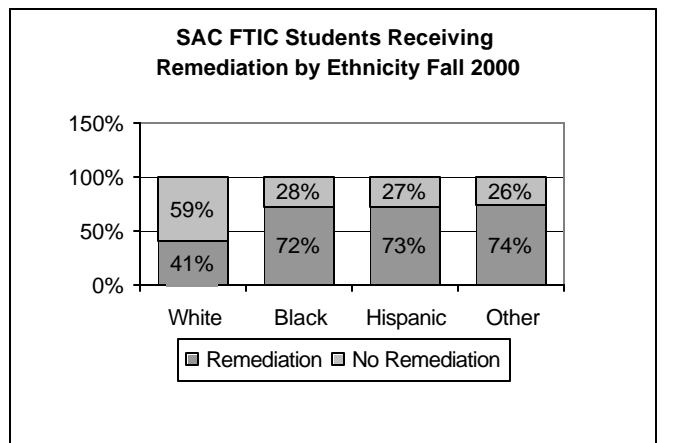
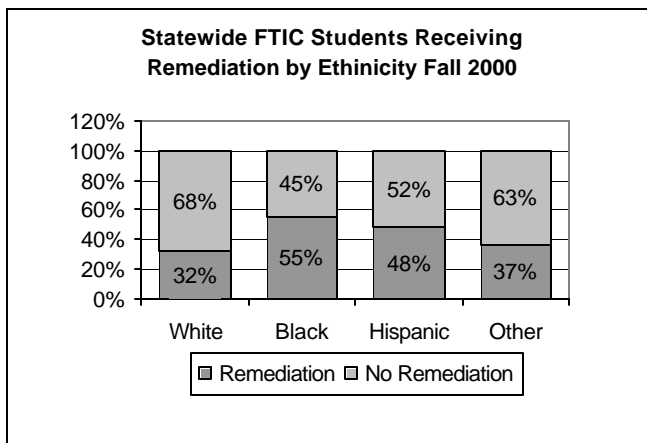
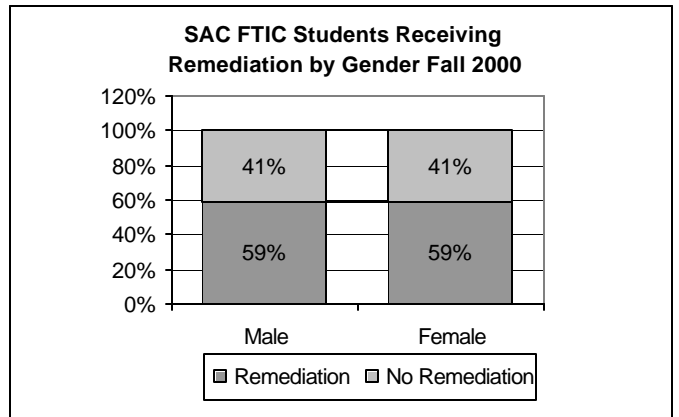
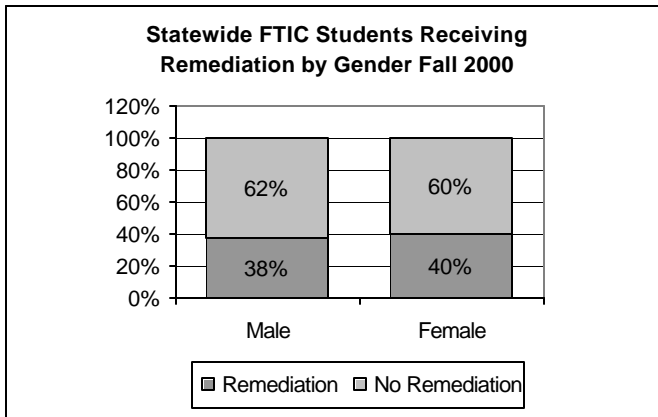
SOURCE: Texas Public Community and Technical Colleges Statewide 2002 Fact Book

ENROLLMENT BY SPECIAL POPULATIONS 2001-2002



SOURCE: Texas Public Community and Technical Colleges Statewide 2002 Fact Book

FIRST TIME IN COLLEGE STUDENTS RECEIVING REMEDIATION – FALL 2000



SOURCE: Texas Public Community and Technical Colleges Statewide 2002 Fact Book

**COHORT PROGRESSION ANALYSIS OF FTIC STUDENTS
BY TYPE OF MAJOR FOR YEARS OF 1996-1998**

FALL 1996

	ALL FTIC					ACADEMIC FTIC					TECHNICAL FTIC				
	Total	Transferred Through Fall 1998	%	Graduated Through Summer 1998	%	Total	Transferred Through Fall 1998	%	Graduated Through Summer 1998	%	Total	Transferred Through Fall 1998	%	Graduated Through Summer 1998	%
San Antonio College	3,891	987	25%	72	2%	2,910	852	29%	31	1%	981	135	14%	41	4%
Texas Community and Technical Colleges	96,262	29,651	31%	7,801	8%	59,704	22,513	38%	2,981	5%	36,558	7,138	20%	4,820	13%

FALL 1997

	ALL FTIC					ACADEMIC FTIC					TECHNICAL FTIC				
	Total	Transferred Through Fall 1999	%	Graduated Through Summer 1999	%	Total	Transferred Through Fall 1999	%	Graduated Through Summer 1999	%	Total	Transferred Through Fall 1999	%	Graduated Through Summer 1999	%
San Antonio College	4,258	1,259	30%	85	2%	3,248	1,108	34%	37	1%	1,010	151	15%	48	5%
Texas Community and Technical Colleges	99,573	32,344	32%	7,560	8%	63,840	24,740	39%	3,302	5%	35,733	7,604	21%	4,258	12%

FALL 1998

	ALL FTIC					ACADEMIC FTIC					TECHNICAL FTIC				
	Total	Transferred Through Fall 2000	%	Graduated Through Summer 2000	%	Total	Transferred Through Fall 2000	%	Graduated Through Summer 2000	%	Total	Transferred Through Fall 2000	%	Graduated Through Summer 2000	%
San Antonio College	3,810	1,099	29%	100	3%	2,847	921	32%	48	2%	963	178	18%	52	5%
Texas Community and Technical Colleges	101,246	34,391	34%	8,945	9%	62,618	25,470	41%	3,942	6%	38,628	8,921	23%	5003	13%

CONTENTS – PERSONNEL PROFILE

PERSONNEL PROFILE.....

FACULTY

 Faculty Profile (Gender, Ethnicity, Age, Highest Degree Earned, Contact Hrs & Sections Taught), Fall 200261

 Full-Time Faculty, Fall 200262

 Faculty Rank, Fall 2002.....62

FULL-TIME EMPLOYEES

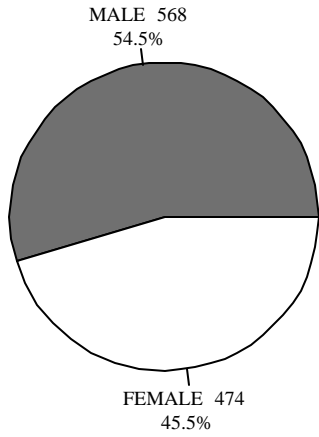
 Full-Time Employee Profile, Fall 200263

 By Gender & Classification, Fall 200263

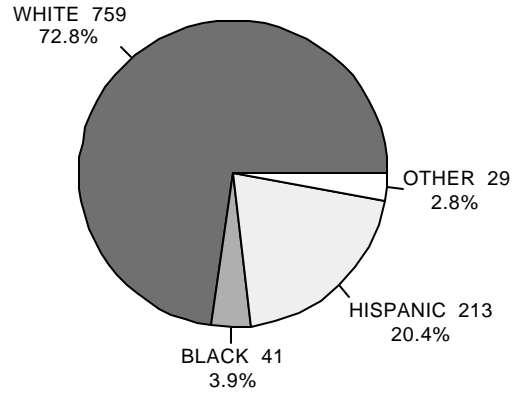
 By Ethnicity & Classification, Fall 2002.....63

FACULTY PROFILE – FALL 2002
1,042 TOTAL FACULTY

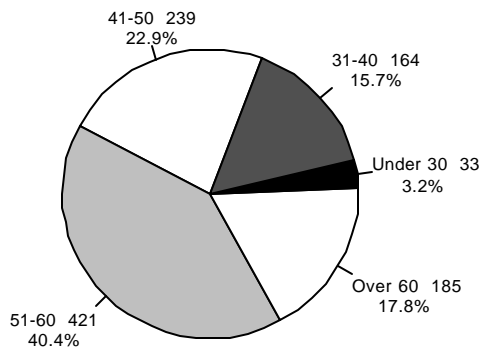
GENDER



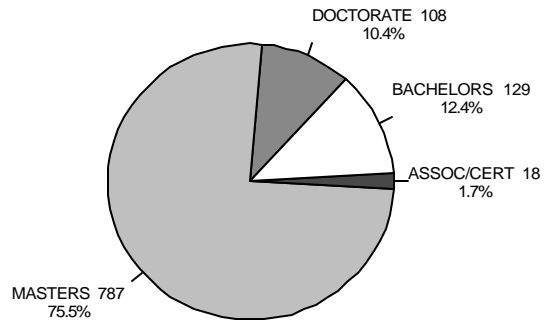
ETHNICITY



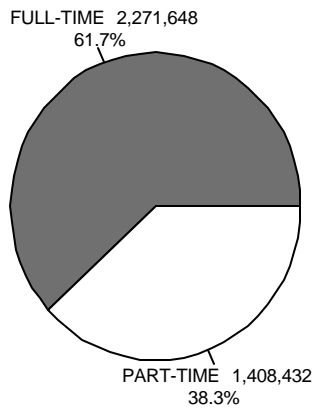
AGE



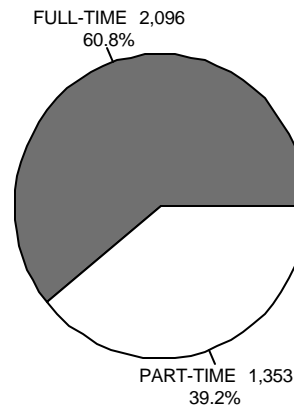
HIGHEST DEGREE EARNED



CONTACT HOURS TAUGHT



SECTIONS TAUGHT



SOURCE: CBM008, 11/26/02; AFA055, 2001
 Includes both tenure-track and adjunct faculty

FULL-TIME FACULTY – FALL 2002

	WHITE	BLACK	HISPANIC	OTHER	TOTAL
FEMALE	142 31.8%	12 2.7%	47 10.5%	6 1.3%	207 46.4%
MALE	173 38.8%	6 1.3%	51 11.4%	9 2.0%	239 53.6%
TOTAL	315 70.6%	18 4.0%	98 21.9%	15 3.3%	446 100.0%

SOURCE: HFA945, 01/29/02

Note: Percents are percents of total

FACULTY RANK – FALL 2002

RANK	NUMBER	PERCENT
PROFESSOR	136	13.1%
ASSOCIATE PROFESSOR	63	6.0%
ASSISTANT PROFESSOR	93	8.9%
INSTRUCTOR	102	9.8%
LECTURER	2	0.2%
ADJUNCT FACULTY	621	59.6%
VISITING TEACHER	25	2.4%
TOTAL	1,042	100.0%

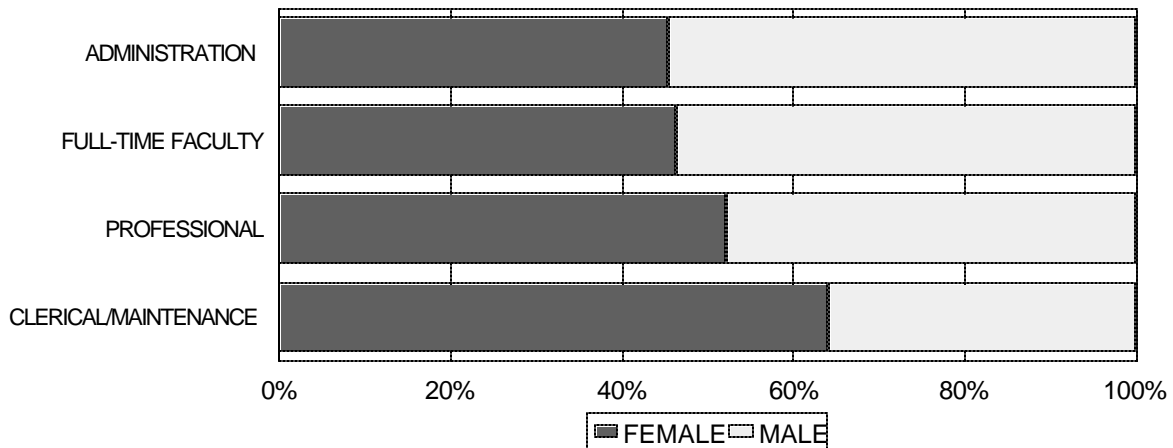
SOURCE: CBM008, 11/26/02

Includes both tenure-track and adjunct faculty

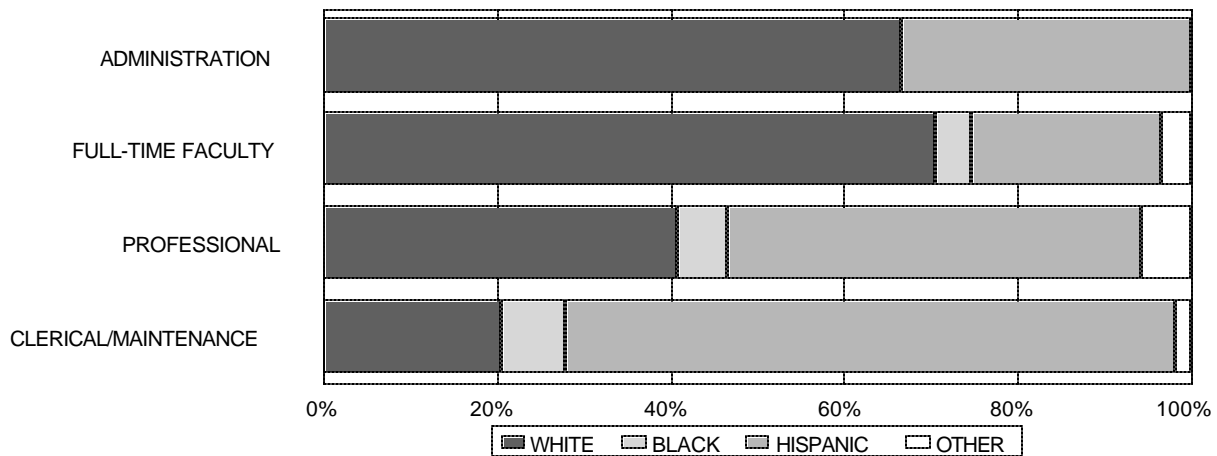
FULL-TIME EMPLOYEE PROFILE – GENDER & ETHNICITY FALL 2002

TYPE	WHITE	BLACK	HISPANIC	OTHER	FEMALE	MALE	TOTAL
Administrators	6 66.6%	0 0.0%	3 33.3%	0 0.0%	5 55.5%	4 44.4%	9 100%
Tech/Clerical/ Maintenance	69 20.4%	25 7.4%	237 70.3%	6 1.7%	216 64.0%	121 35.9%	337 100%
Full-time Faculty	315 70.6%	18 4.0%	98 21.9%	15 3.4%	207 46.4%	239 53.5%	446 100%
Professional	29 39.4%	4 5.6%	34 47.8%	4 5.6%	37 52.1%	34 33.8%	71 100%
TOTAL	419 48.6%	47 5.4%	372 43.1%	25 2.9%	465 53.9%	398 46.1%	863 100%

EMPLOYMENT BY GENDER & CLASSIFICATION FALL 2002



EMPLOYMENT BY ETHNICITY & CLASSIFICATION FALL 2002



SOURCE: HFA945, 1/29/02

CONTENTS – FINANCIAL PROFILE

FINANCIAL PROFILE.....

Tuition and Fees 2002-200365

Base Revenues 2002-200365

Summary of Revenue 2002-200366

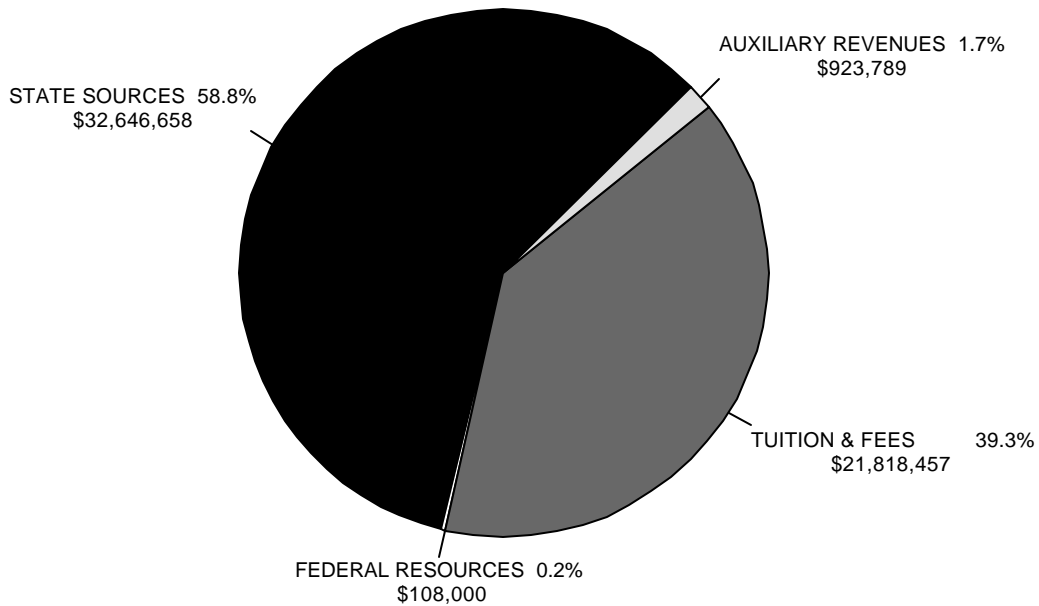
Summary of Expenditures 2002-200366

ACCD 2002-2003 TUITION & FEES *

SEMESTER HOURS TAKEN	TEXAS RESIDENTS				NON-TEXAS RESIDENT/INTERNAT'L STUDENTS	
	IN-DISTRICT		OUT-OF-DISTRICT		TUITION	GEN FEE
	TUITION	GEN FEE	TUITION	GEN FEE		
1 - 6	\$150.00	\$80	\$277.50	\$80	\$542.50	\$80
7	210.00	85	388.50	85	759.50	85
8	240.00	85	444.00	85	868.00	85
9	270.00	85	499.50	85	976.50	85
10	300.00	85	555.00	85	1085.00	85
11	330.00	85	610.50	85	1193.50	85
12	360.00	85	666.00	85	1302.00	85
13	390.00	85	721.50	85	1410.50	85
14	420.00	85	777.00	85	1519.00	85
15	450.00	85	832.50	85	1627.50	85
16	480.00	85	888.00	85	1736.00	85
17	510.00	85	943.50	85	1844.50	85
18	540.00	85	999.00	85	1953.00	85
19	570.00	85	1054.50	85	2061.50	85
20	600.00	85	1110.00	85	2170.00	85
21	630.00	85	1165.50	85	2278.50	85

*As of fall 2002 Semester

2002-2003 SAN ANTONIO COLLEGE BASE REVENUES



SOURCE: 2002-2003 ACCD Operating Budget Summary

SUMMARY OF REVENUES, 2002-2003

SAN ANTONIO COLLEGE REVENUES	
State Sources	\$28,740,614
Federal Sources	\$123,000
Tuition	\$17,193,616
Lab & Other Fees	2,621,551
General Fees	4,025,196
Total Tuition and Fees	\$23,840,363
Total Educational & General Revenue	\$52,703,977
Total Local Sources-Other Income	\$31,116
Auxiliary Enterprises	\$908,953
GRAND TOTAL REVENUES	\$53,644,046

SOURCE: 2002-2003 ACCD Operating Budget Summary

SUMMARY OF EXPENDITURES, 2002-2003

SAN ANTONIO COLLEGE EXPENDITURES	
PERSONNEL:	
Regular	\$31,467,932
Temporary Lecturer and Part -time Faculty	12,419,655
Temporary Other	1,572,721
TOTAL PERSONNEL	\$45,460,308
GENERAL:	
Travel	95,024
Employment Development	2,945
Basic Telephone Services	185,483
Instructional Printing	100,217
Lab Supplies and Expenses	535,270
General Expenses	2,401,342
Fringe Benefits	4,622,358
Scholarships	149,059
Mandatory Transfers	215,000
TOTAL GENERAL	\$7,737,805
Fixed Assets	\$0
Capitalized Instructional Equipment	1,233,973
Library Books	545,850
Computer Services	807,992
TOTAL EXPENDITURES AND TRANSFERS	\$55,785,928

SOURCE: 2002-2003 ACCD Operating Budget Summary