

ST. PHILIP'S COLLEGE



STUDENT PROFILE TRENDS

FALL 1997 – FALL 2004

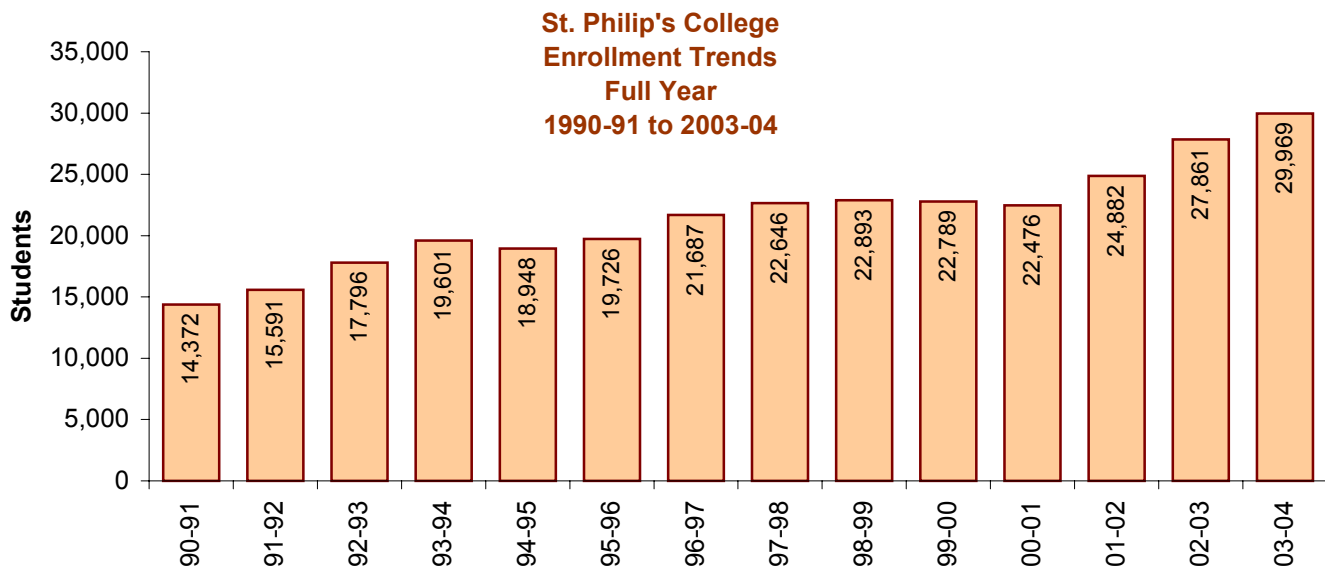
ENROLLMENT TRENDS
DAY / EVENING
AGE
GENDER
ETHNICITY
FTIC
FEEDER HIGH SCHOOLS
FEEDER ZIP CODES
RETENTION

CONTENTS

	Page
ENROLLMENT TRENDS – FALL 1990 TO FALL 2004.....	1
DAY/EVENING.....	2
AGE.....	3-4
GENDER (PERCENTAGE).....	5
AGE & GENDER (PERCENTAGE).....	6
ETHNICITY.....	7
ETHNICITY (PERCENTAGE).....	8
FTIC	9
FEEDER HIGH SCHOOLS.....	10
FEEDER ZIP CODES.....	11
RETENTION.....	12

ST. PHILIP'S COLLEGE ENROLLMENT TRENDS 1990-91 TO 2004-05

Year	Fall	Spring			Summer			Total	
		Fall Flex II	Spring,	Total	Spring Flex II	Summer I	Total	Summer II	
. 04-05	10,575	1,633	10,234	11,867			0		22,442
03-04	9,880	1,777	10,191	11,968	1,593	4,611	6,204	1,917	29,969
. 02-03	9,336	1,392	9,648	11,040	1,609	4,216	5,825	1,660	27,861
01-02	8,630	1,060	8,692	9,752	1,333	3,859	5,192	1,308	24,882
. 00-01	8,293	1,077	7,787	8,864	1,391	2,903	4,294	1,025	22,476
99-00	8,072	940	8,001	8,941	1,336	3,204	4,540	1,236	22,789
. 98-99*	8,302	873	8,013	8,886	977	3,525	4,502	1,203	22,893
97-98	8,259	813	8,009	8,822	1,023	3,611	4,634	931	22,646
. 96-97	7,865	901	7,905	8,806	1,047	3,218	4,265	751	21,687
95-96	7,126	639	7,220	7,859	756	3,155	3,911	830	19,726
. 94-95	7,270	494	7,084	7,578	544	3,003	3,547	553	18,948
93-94	7,277	474	7,330	7,804	588	3,357	3,945	575	19,601
. 92-93	6,643	166	6,989	7,155	---	3,477	3,477	521	17,796
91-92	5,844	98	6,000	6,098	---	3,106	3,106	543	15,591
. 90-91**	5,528	---	5,524	5,524	---	2,780	2,780	540	14,372



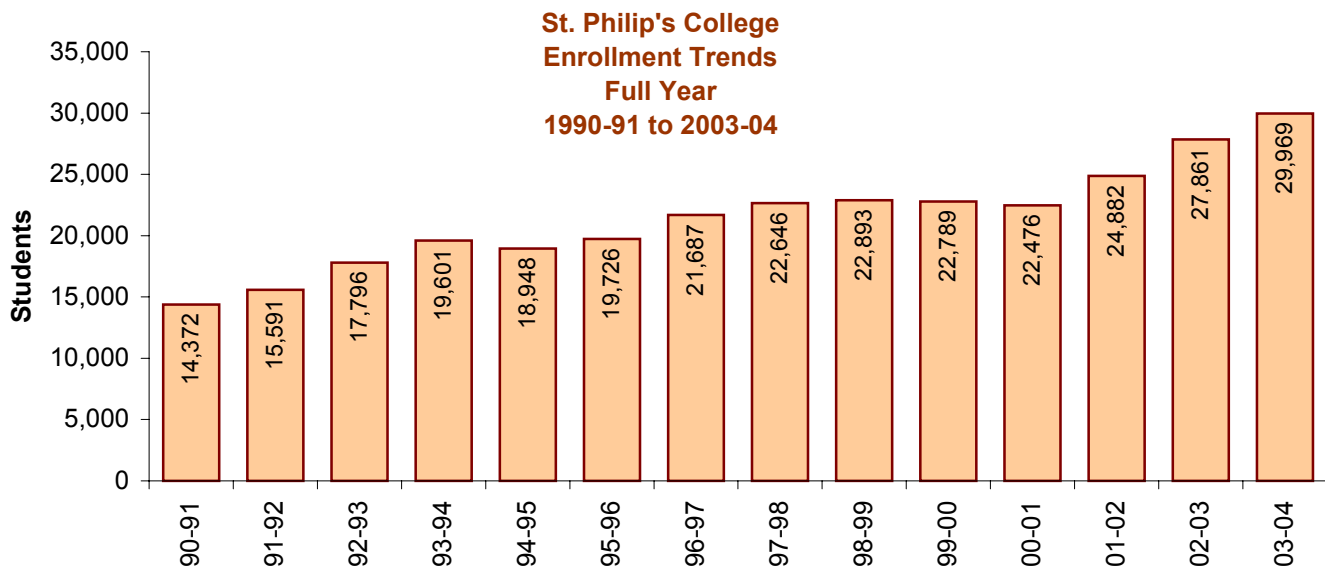
*Summer II '99 includes 173 for special sessions for Allied Health & Nursing

**Flex data separate from regular semester for 1990-91 and previous years is not available.

. Indicates base year

ST. PHILIP'S COLLEGE ENROLLMENT TRENDS 1990-91 TO 2004-05

Year	Fall	Spring			Summer			Total	
		Fall Flex II	Spring,	Total	Spring Flex II	Summer I	Total	Summer II	
. 04-05	10,575	1,633	10,234	11,867			0		22,442
03-04	9,880	1,777	10,191	11,968	1,593	4,611	6,204	1,917	29,969
. 02-03	9,336	1,392	9,648	11,040	1,609	4,216	5,825	1,660	27,861
01-02	8,630	1,060	8,692	9,752	1,333	3,859	5,192	1,308	24,882
. 00-01	8,293	1,077	7,787	8,864	1,391	2,903	4,294	1,025	22,476
99-00	8,072	940	8,001	8,941	1,336	3,204	4,540	1,236	22,789
. 98-99*	8,302	873	8,013	8,886	977	3,525	4,502	1,203	22,893
97-98	8,259	813	8,009	8,822	1,023	3,611	4,634	931	22,646
. 96-97	7,865	901	7,905	8,806	1,047	3,218	4,265	751	21,687
95-96	7,126	639	7,220	7,859	756	3,155	3,911	830	19,726
. 94-95	7,270	494	7,084	7,578	544	3,003	3,547	553	18,948
93-94	7,277	474	7,330	7,804	588	3,357	3,945	575	19,601
. 92-93	6,643	166	6,989	7,155	---	3,477	3,477	521	17,796
91-92	5,844	98	6,000	6,098	---	3,106	3,106	543	15,591
. 90-91**	5,528	---	5,524	5,524	---	2,780	2,780	540	14,372



*Summer II '99 includes 173 for special sessions for Allied Health & Nursing

**Flex data separate from regular semester for 1990-91 and previous years is not available.

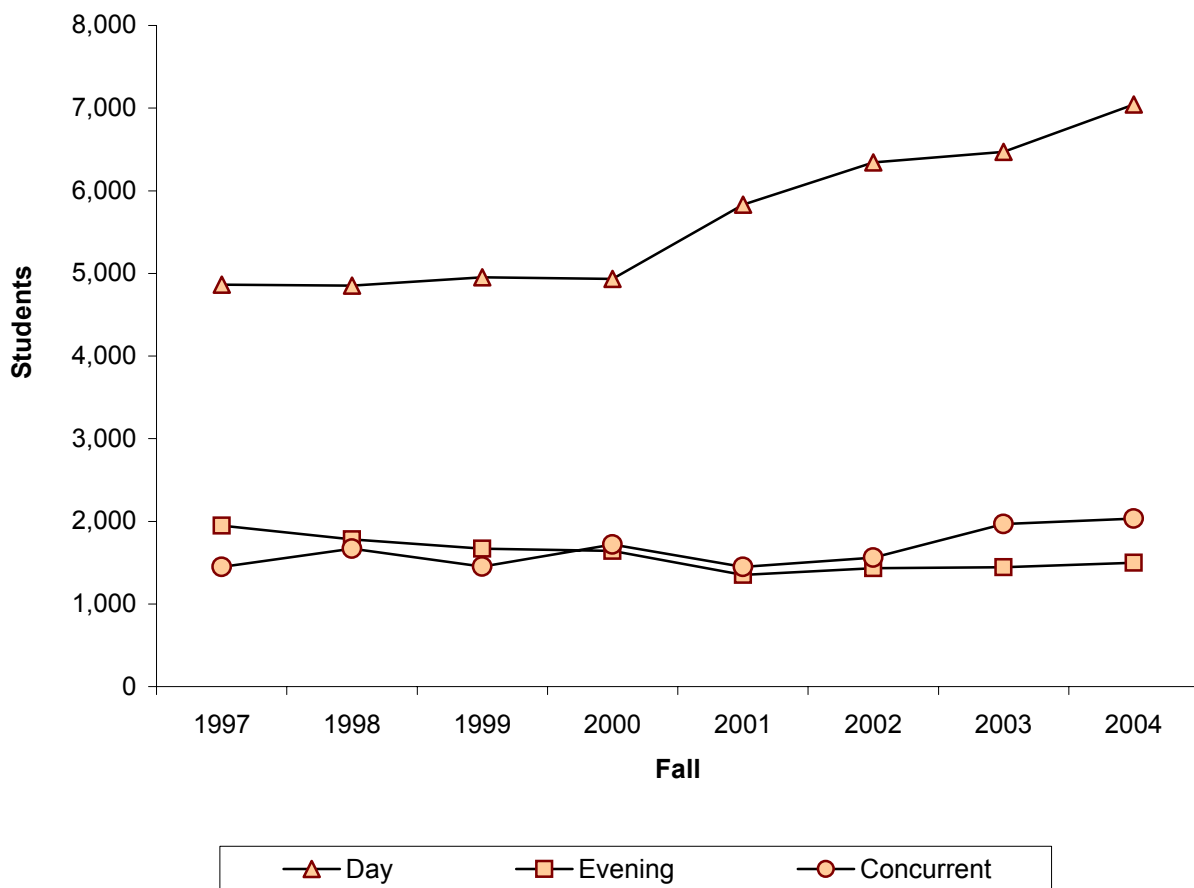
. Indicates base year

ST. PHILIP'S COLLEGE DAY/EVENING ENROLLMENT TREND

TOTAL STUDENTS

FALL

	1997	1998	1999	2000	2001	2002	2003	2004
Day	4,863	4,853	4,952	4,932	5,831	6,344	6,469	7,042
Evening	1,949	1,782	1,669	1,640	1,351	1,431	1,445	1,500
Concurrent	1,448	1,668	1,451	1,718	1,448	1,561	1,966	2,033



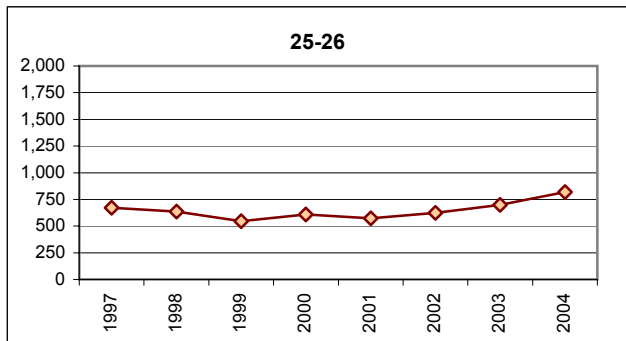
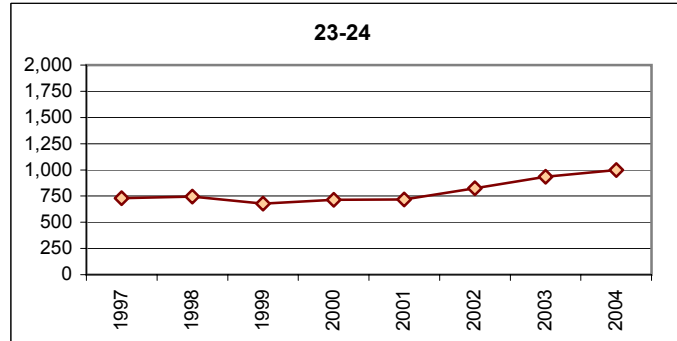
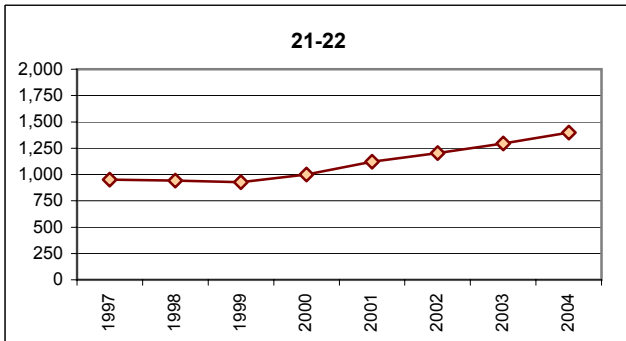
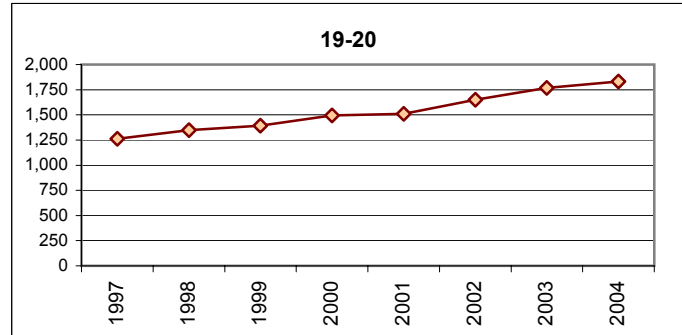
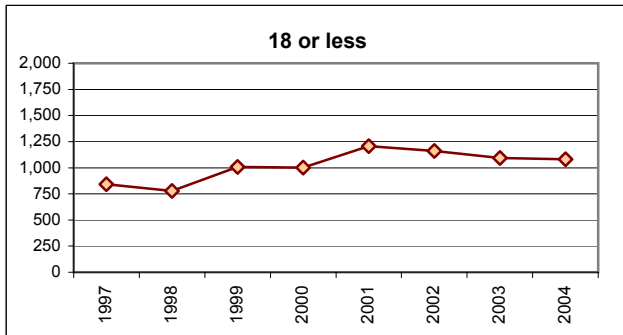
ST. PHILIP'S COLLEGE AGE ENROLLMENT TREND

TOTAL STUDENTS

FALL

AGE	1997	1998	1999	2000	2001	2002	2003	2004
18 or less	842	778	1,007	1,002	1,206	1,160	1,092	1,080
19-20	1,263	1,348	1,392	1,494	1,509	1,651	1,768	1,831
21-22	950	941	927	999	1,121	1,205	1,296	1,397
23-24	730	745	679	713	719	823	934	999
25-26	671	637	546	610	573	623	698	818

27-50+ (see next page)



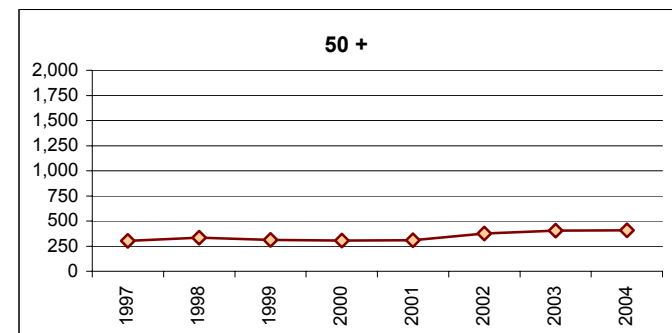
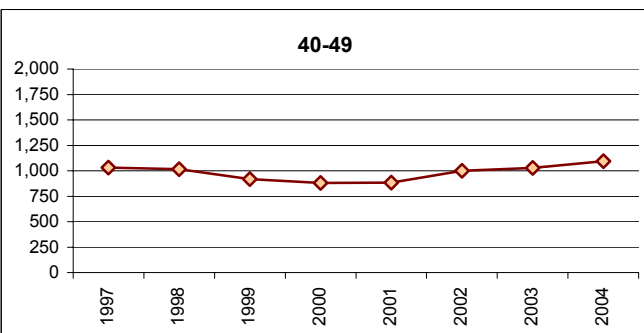
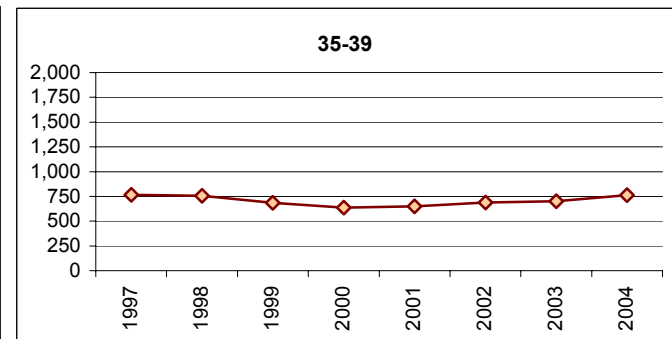
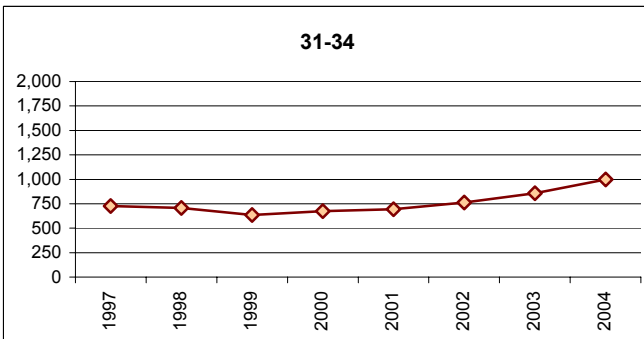
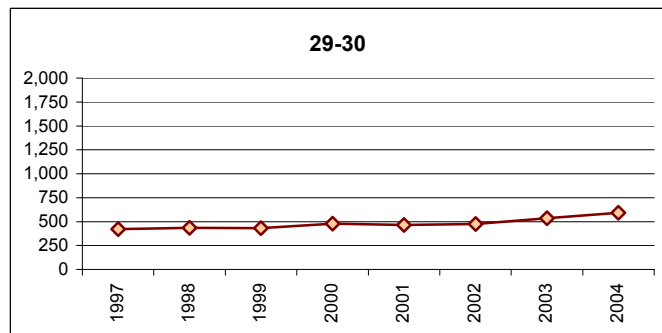
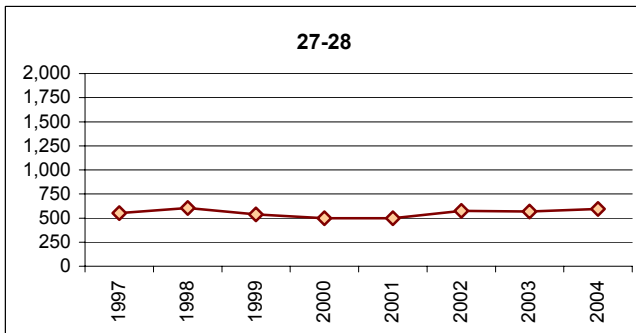
CONTINUED NEXT PAGE

ST. PHILIP'S COLLEGE AGE ENROLLMENT TREND

TOTAL STUDENTS

FALL

AGE	1997	1998	1999	2000	2001	2002	2003	2004
27-28	553	605	538	497	500	574	567	594
29-30	421	436	432	479	466	474	534	592
31-34	728	706	635	673	693	762	858	998
35-39	767	757	686	638	650	688	702	764
40-49	1,031	1,015	917	882	884	1,000	1,028	1,093
50 +	304	335	313	306	309	376	403	409

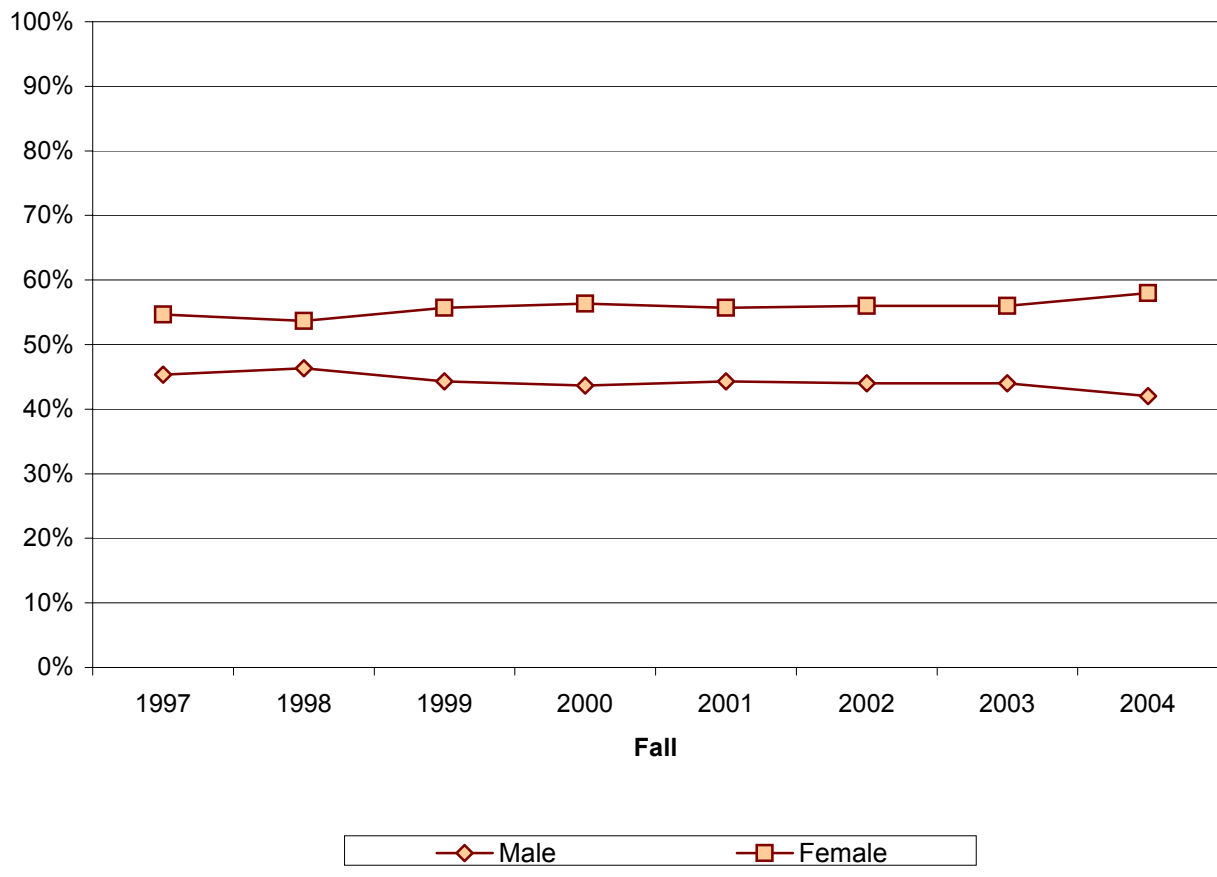


ST. PHILIP'S COLLEGE GENDER ENROLLMENT TREND

PERCENTAGE

FALL

	1997	1998	1999	2000	2001	2002	2003	2004
Male	45.4%	46.3%	44.3%	43.7%	44.3%	44.0%	44.0%	42.0%
Female	54.6%	53.7%	55.7%	56.3%	55.7%	56.0%	56.0%	58.0%

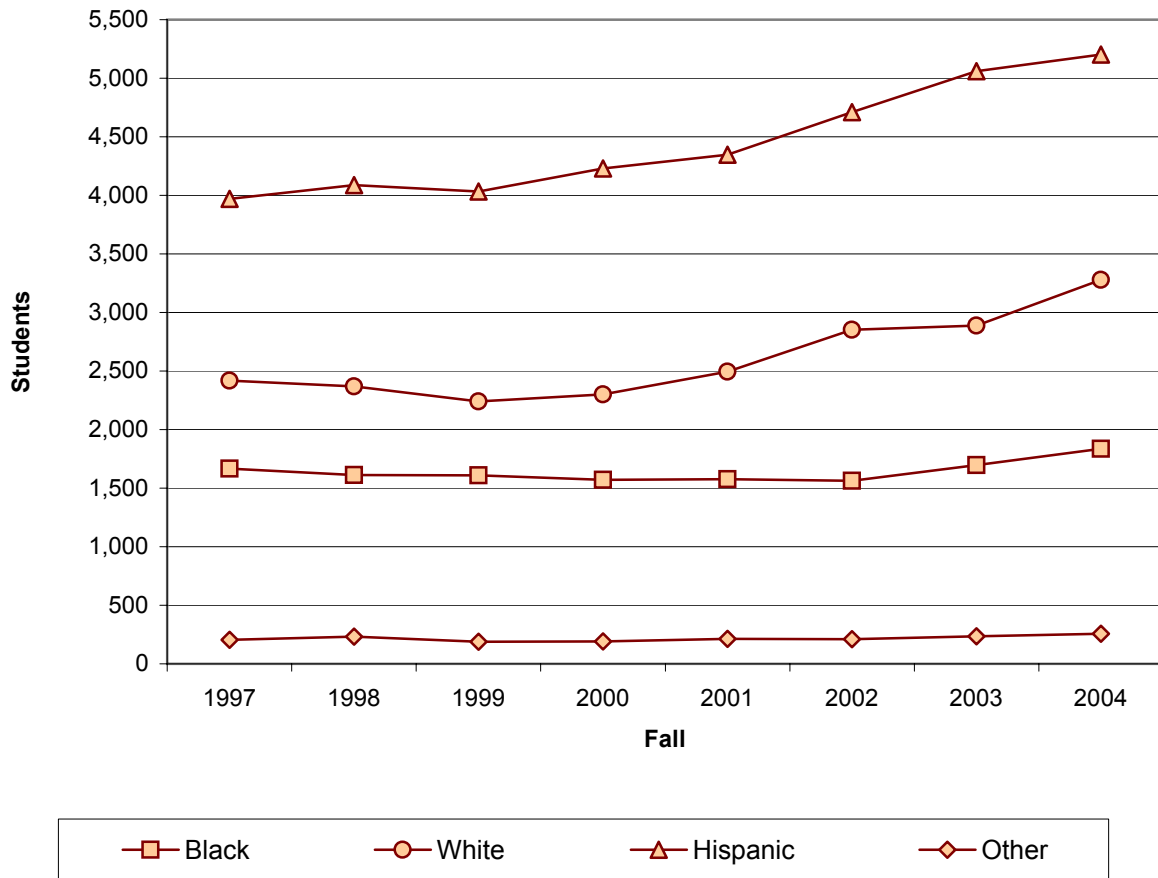


ST. PHILIP'S COLLEGE ETHNICITY ENROLLMENT TREND

TOTAL STUDENTS

FALL

	1997	1998	1999	2000	2001	2002	2003	2004
Black	1,668	1,613	1,610	1,571	1,577	1,564	1,696	1,837
White	2,418	2,369	2,241	2,300	2,495	2,852	2,889	3,280
Hispanic	3,970	4,088	4,033	4,230	4,346	4,710	5,060	5,201
Other	204	233	188	192	212	210	235	257

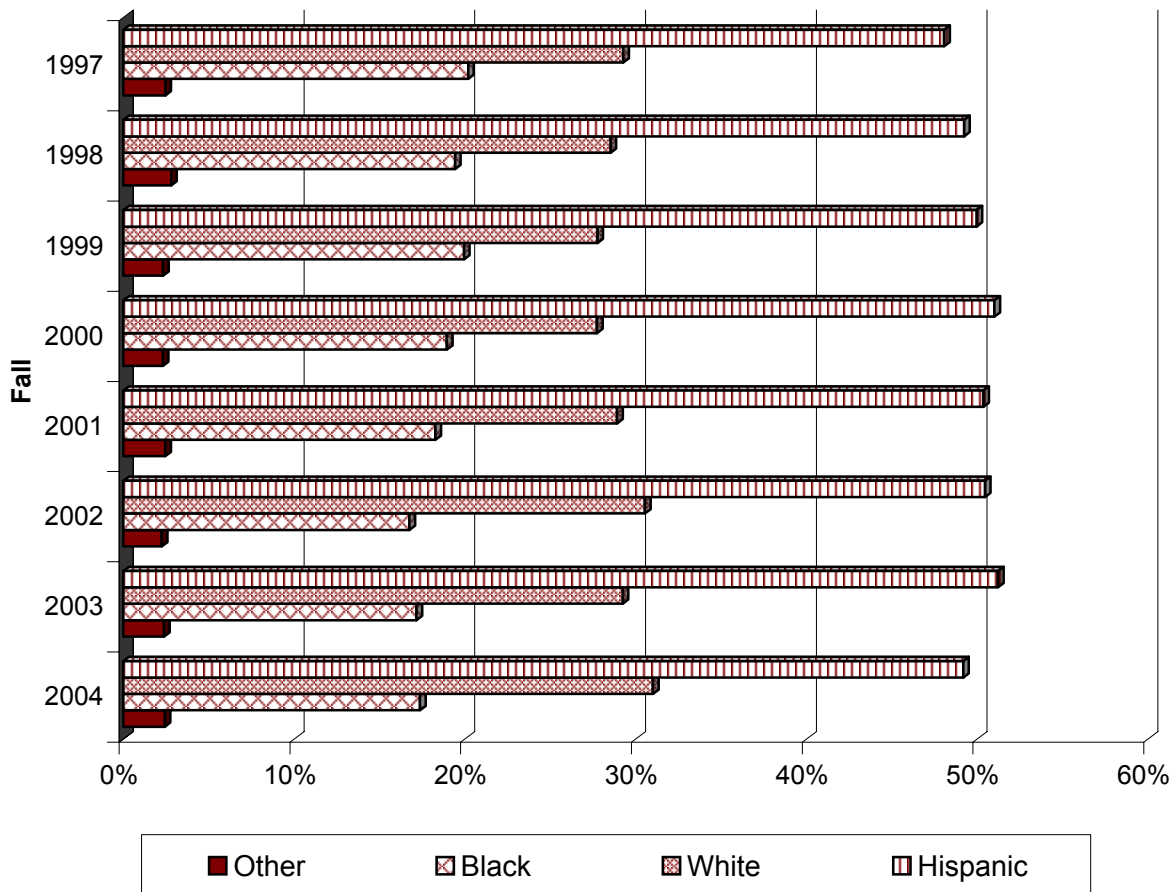


ST. PHILIP'S COLLEGE ETHNICITY ENROLLMENT TREND

PERCENTAGE

FALL

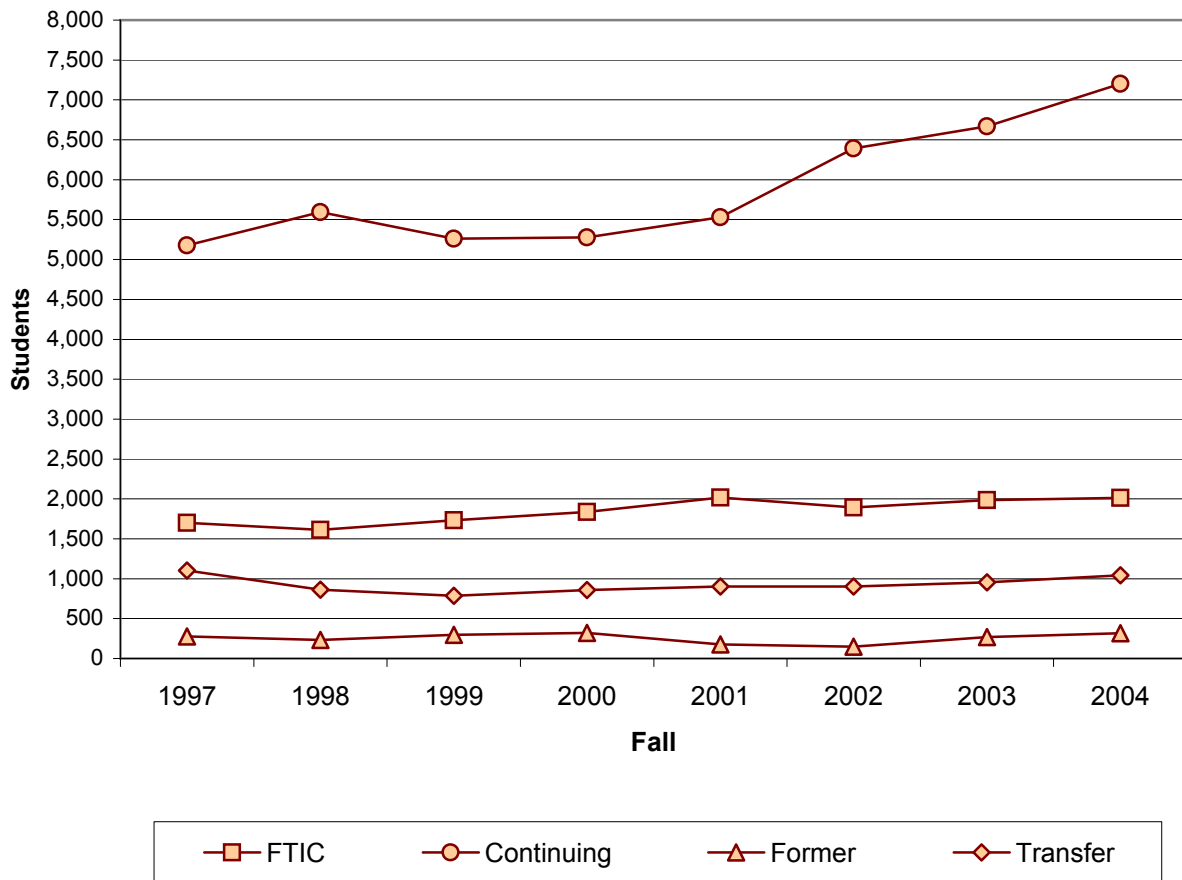
	1997	1998	1999	2000	2001	2002	2003	2004
Black	20.2%	19.4%	19.9%	18.9%	18.3%	16.8%	17.2%	17.4%
White	29.3%	28.5%	27.8%	27.7%	28.9%	30.5%	29.2%	31.0%
Hispanic	48.1%	49.2%	50.0%	51.0%	50.4%	50.4%	51.2%	49.2%
Other	2.5%	2.8%	2.3%	2.3%	2.5%	2.2%	2.4%	2.4%



ST. PHILIP'S COLLEGE FTIC ENROLLMENT TREND

TOTAL STUDENTS

	FALL							
	1997	1998	1999	2000	2001	2002	2003	2004
FTIC	1,702	1,612	1,731	1,836	2,018	1,894	1,986	2,015
Continuing	5,176	5,593	5,261	5,278	5,530	6,391	6,669	7,201
Former	278	234	295	320	178	147	269	315
Transfer	1,104	864	785	859	904	904	956	1,044

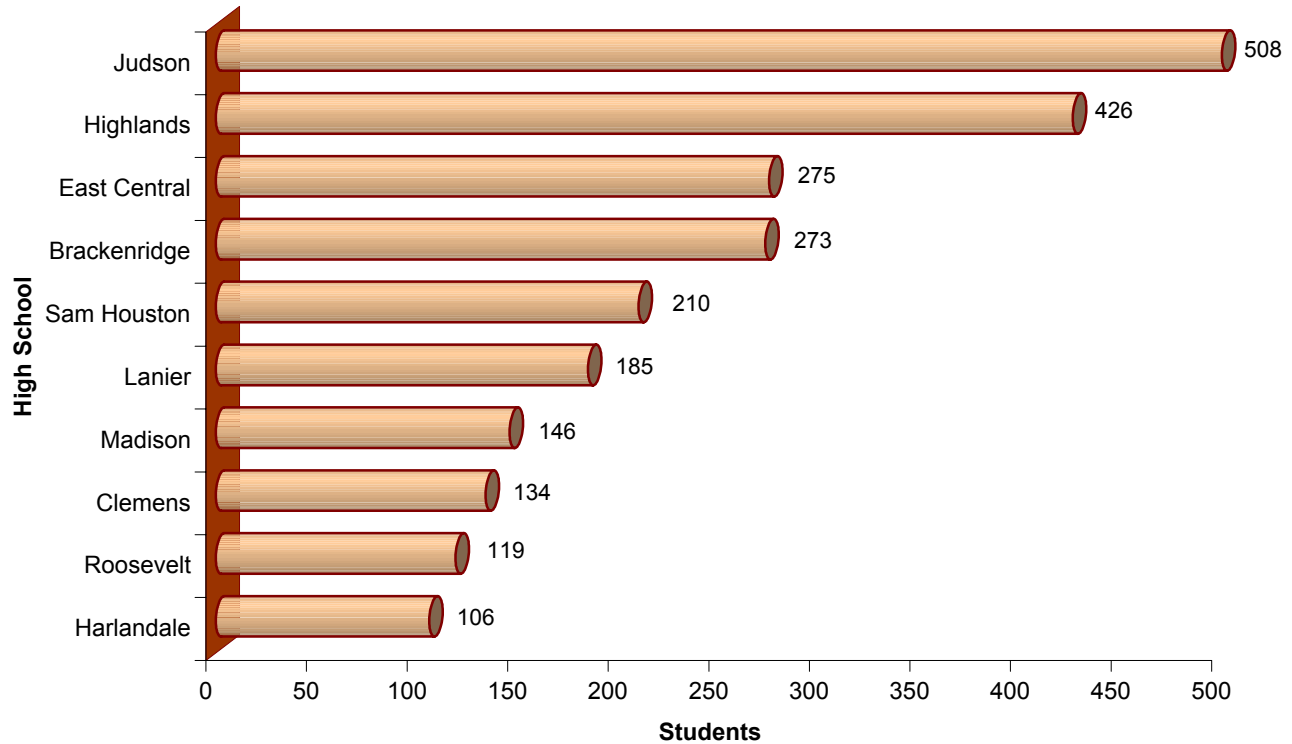


ST. PHILIP'S COLLEGE TOP TEN 10 FEEDER HIGH SCHOOLS ENROLLMENT TREND

FALL

1997		1998		1999		2000		2001		2002		2003		2004	
Highlands	67	Highlands	59	Highlands	50	Judson	68	Highlands	49	Judson	54	Judson	85	Judson	109
Judson	46	Judson	57	Judson	49	Highlands	58	Lanier	47	Brackendridge	46	Highlands	54	Highlands	62
Sam Houston	25	East Central	26	East Central	41	Brackendridge	48	Judson	40	Lanier	30	East Central	42	East Central	51
Brackendridge	20	Harlandale	26	Brackendridge	39	East Central	35	East Central	37	Madison	23	Roosevelt	38	Roosevelt	39
East Central	19	Brackendridge	25	Sam Houston	31	Sam Houston	26	Brackendridge	34	Highlands	27	Brackendridge	33	Sam Houston	34
Madison	18	Sam Houston	24	Jefferson	28	Burbank	24	Madison	27	Roosevelt	27	Lanier	30	Lanier	31
Kennedy	15	Holmes	20	Harlandale	21	Clemens	24	Clemens	26	East Central	24	Sam Houston	27	Madison	30
South San	15	Marsall	20	Kennedy	15	Lanier	22	Sam Houston	26	Clemens	23	Madison	26	Brackendridge	28
Clemens	13	Jay	18	McCollum	15	Jefferson	21	Fox Tech	24	Burbank	20	Clemens	24	Clemens	24
Lanier	12	Madison	17	Holmes	13	South San	21	Harlandale	15	Fox Tech	17	Harlandale	21	Fox Tech	23
										Sam Houston	17	Southside	21	Harlandale	23

TOP 10 FEEDER HIGH SCHOOLS Fall 1997 - Fall 2004



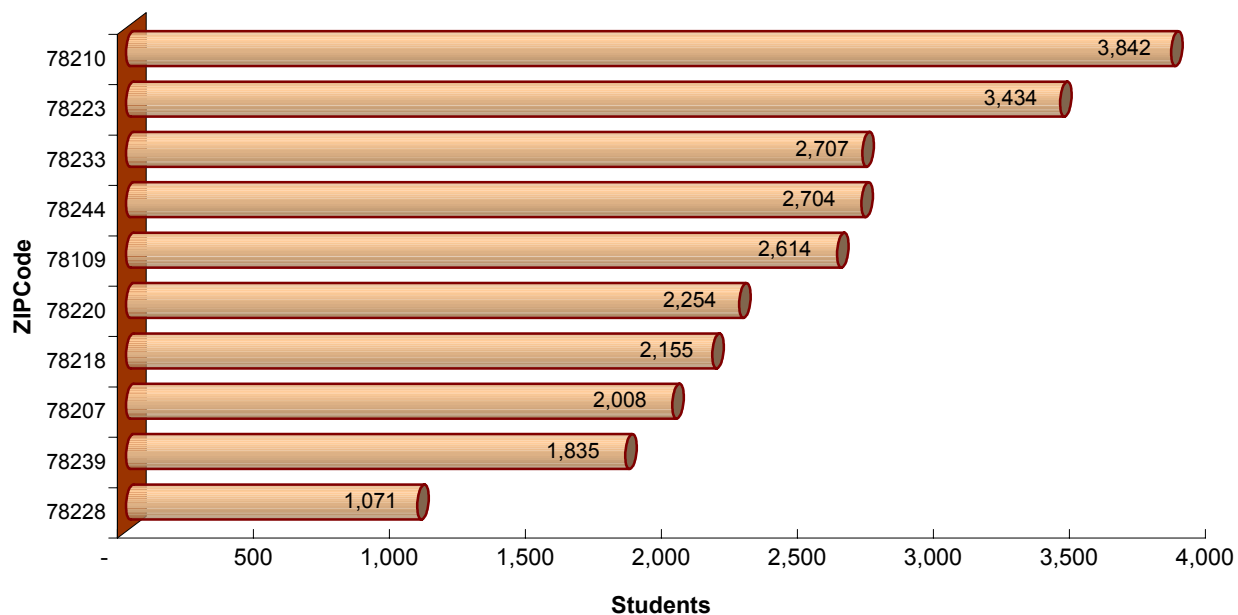
ST. PHILIP'S COLLEGE TOP TEN FEEDER ZIP CODE ENROLLMENT TREND

TOP 10 ZIP CODES

FALL

1997		1998		1999		2000		2001		2002		2003		2004	
78210	469	78210	469	78210	480	78210	472	78210	475	78210	501	78210	506	78233	479
78223	403	78223	427	78223	414	78223	408	78223	414	78223	442	78223	447	78210	470
78218	296	78233	314	78233	300	78109	330	78109	344	78244	396	78244	416	78244	455
78233	296	78109	304	78228	283	78244	317	78244	343	78233	382	78233	385	78233	391
78220	288	78220	278	78220	279	78233	307	78207	335	78109	374	78109	360	78109	381
78109	250	78244	275	78244	272	78239	263	78233	332	78207	331	78207	354	78220	354
78239	248	78228	273	78109	271	78220	255	78239	287	78239	300	78220	313	78218	316
78244	230	78250	271	78218	240	78228	236	78220	260	78218	283	78218	288	78207	306
78250	226	78218	250	78207	235	78207	230	78218	255	78220	279	78247	261	78217	287
78207	217	78239	244	78239	235	78218	227	78217	240	78217	258	78239	258	78228	279
														78247	279

TOP 10 FEEDER ZIP CODES Fall 1997 - Fall 2004



ST. PHILIP'S COLLEGE RETENTION TREND

PERCENTAGE

	FALL							
	1997	1998	1999	2000	2001	2002	2003	2004
Within Semester	90%	92%	91%	90%	91%	93%	93%	92%
Fall to Spring	64%	63%	65%	64%	63%	67%	68%	67%
Fall to Fall	39%	40%	40%	40%	38%	42%	41%	43%

